

The Project Delivery Bureau...

Who are we?

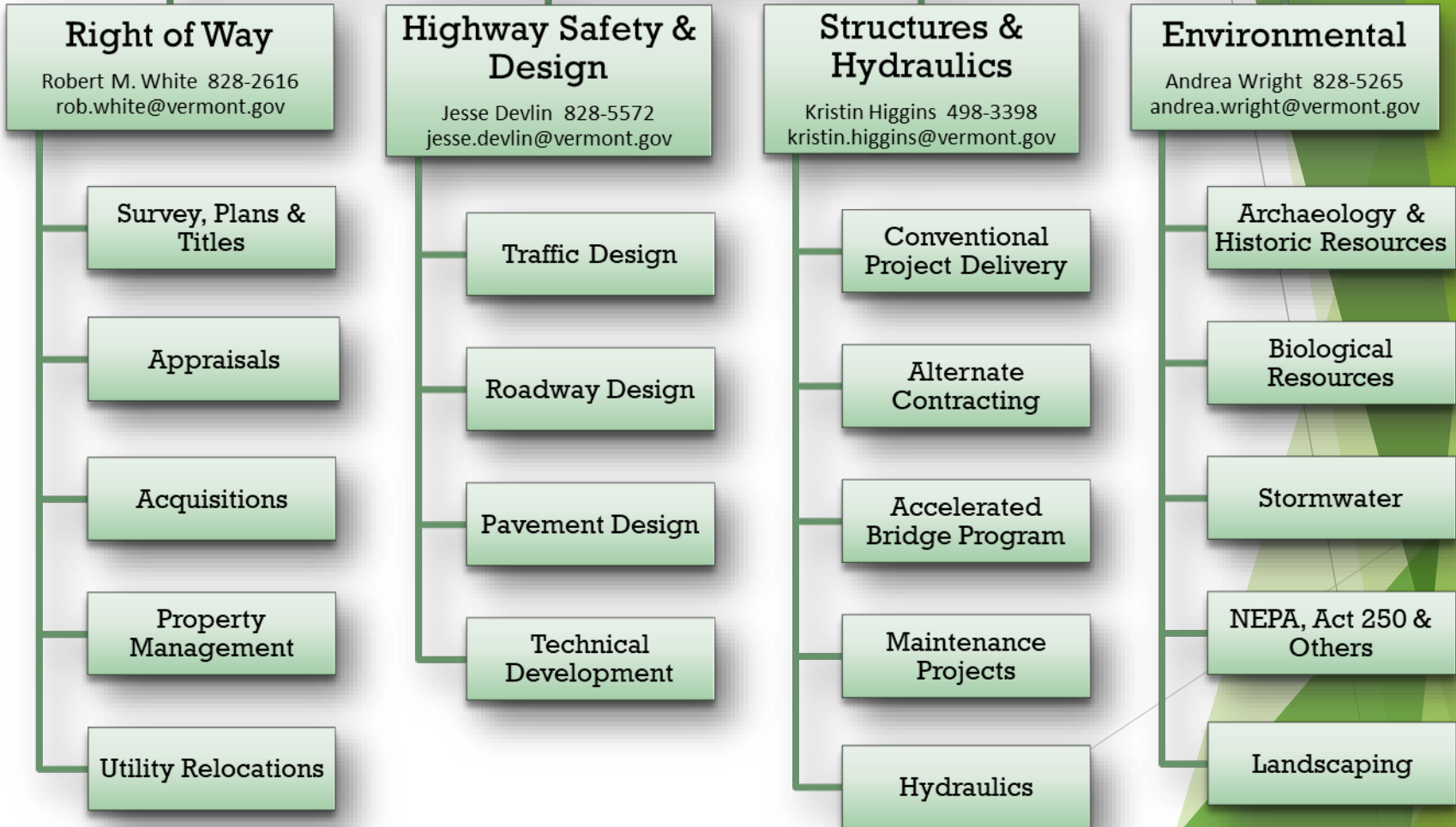
What do we do?

How are we working to get you there?

By Robert M. White
January 2019

VTrans Highway Division
Project Delivery Bureau

Robert M. White 828-2616
rob.white@vermont.gov



Highway Safety & Design

29 employees

- ▶ Project Management and Design Engineering for Highway improvement projects
- ▶ Roadway Reconstruction
- ▶ Paving
- ▶ Intersection Improvements
- ▶ Slope and Ledge Stabilization
- ▶ Small Culvert Replacement (<6' diameter)

Structures

42 Employees

- ▶ Project Management and Design Engineering for Bridges and Large Culverts projects
- ▶ State Bridges
- ▶ Town Highway Bridges
- ▶ Large Culverts (>6' diameter)
- ▶ Hydraulic Design

Environmental

14 Employees

- ▶ Permit Acquisition and Regulatory Compliance
- ▶ Technical Expertise
 - ▶ Wetlands
 - ▶ Wildlife Habitat
 - ▶ Stormwater & Water Quality
 - ▶ Archeology and Historic Properties
 - ▶ National Environmental Policy Act (NEPA) Documentation
 - ▶ ACT 250
 - ▶ Landscape Architecture

Right of Way

41 Employees

- ▶ Geodetic and Route Survey
- ▶ Plans and Title
- ▶ Legal Documents
- ▶ Appraisals
- ▶ Negotiations
- ▶ Utility Relocations
- ▶ Highway Property Management



East Montpelier
Route 14 Bridge over Winooski River

