

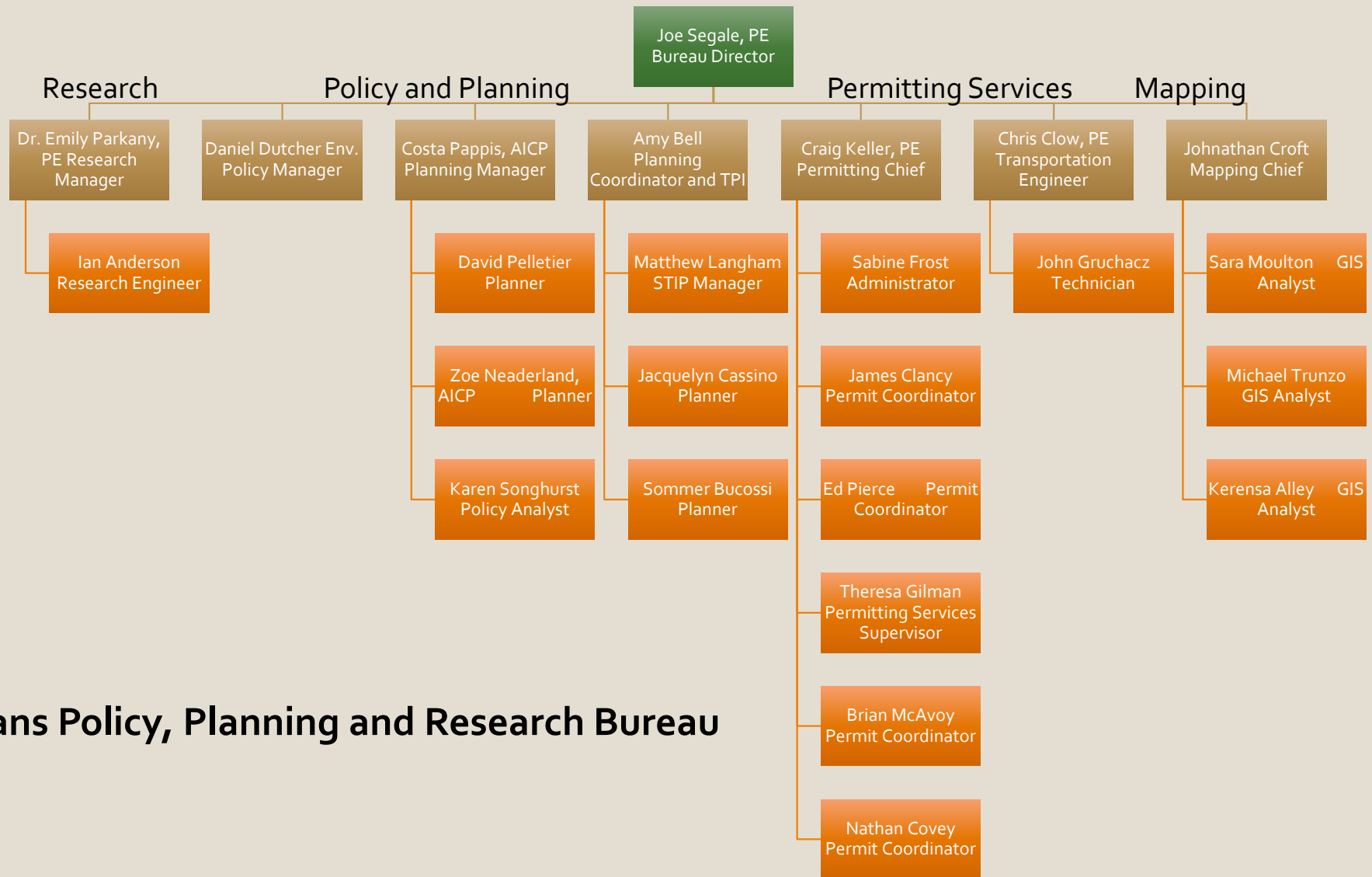
House Transportation
Committee

January 24, 2019

Joe Segale, P.E./PTP



POLICY, PLANNING AND RESEARCH BUREAU OVERVIEW

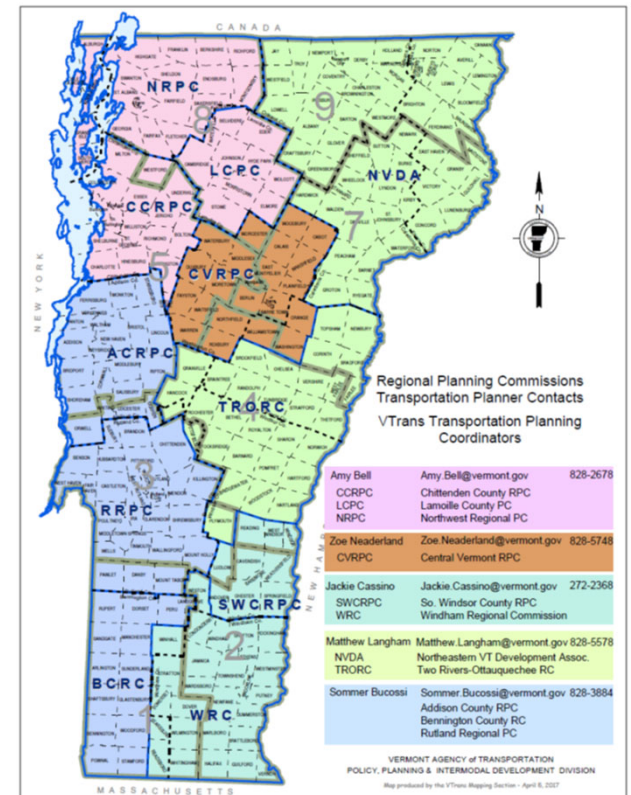


VTrans Policy, Planning and Research Bureau

TRANSPORTATION PLANNING INITIATIVE

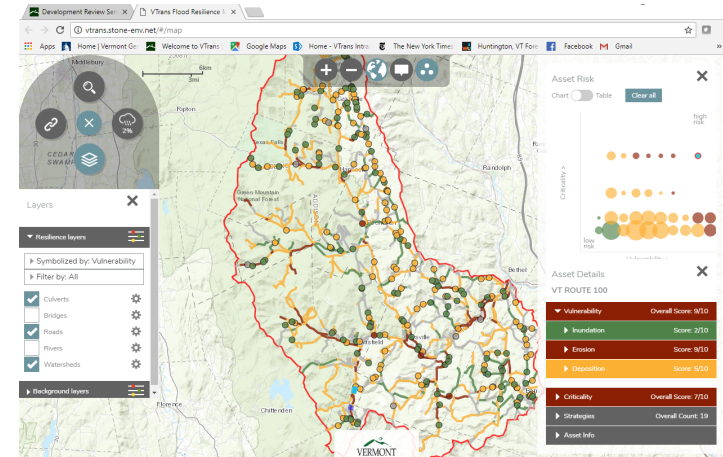
- Funding to 10 Regional Planning Commissions and the Chittenden County RPC/MPO
- Cooperation and coordination between VTrans, RPC and Municipalities
- Regional input to project prioritization
- Local transportation planning and technical assistance
- Road, bridge and culvert inventories,
- Municipal Roads General Permit support

TRANSPORTATION PLANNING INITIATIVE ACCOMPLISHMENTS				
Enhance cooperation and coordination between Agency, RPCs and municipalities	Better connect Federal, regional and statewide transportation planning	Provide technical assistance to municipalities	Advance Agency Strategic and Long-Range Transportation Plans	Provide a mechanism for improved public outreach and education
234 Municipalities actively engaged in regional transportation planning	11 Current regional transportation plans	43% Transportation budget spent on municipal technical assistance.	341 Data collection activities conducted for Agency	152 Municipalities assisted with transportation related grants

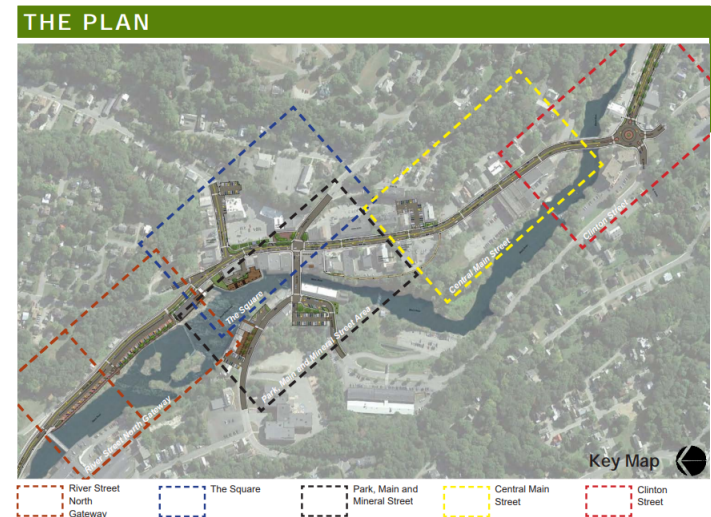


POLICY & PLANNING

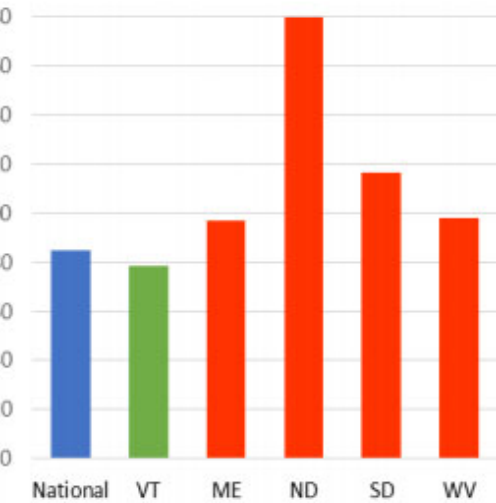
- Flood Resilience Planning Tool
- 2040 Long Range Transportation Plan
- Federal Grant Applications
 - \$20 million VT Regional Freight Rail Corridor Upgrade Project and \$2 million - Vermonter Amtrak Safety Project.
- Automated Vehicles
- VT 100-108 Corridor Management Plan
- Freight, Aviation and Public Transit Plans Underway
- National and International Coordination
- MAP-21/FAST Act Rule Making Monitoring and Implementation
- Better Connections Grant Program



Transportation Resilience Planning Tool – Upper White Watershed



Better Connection Grant – Springfield Main Street Master Plan



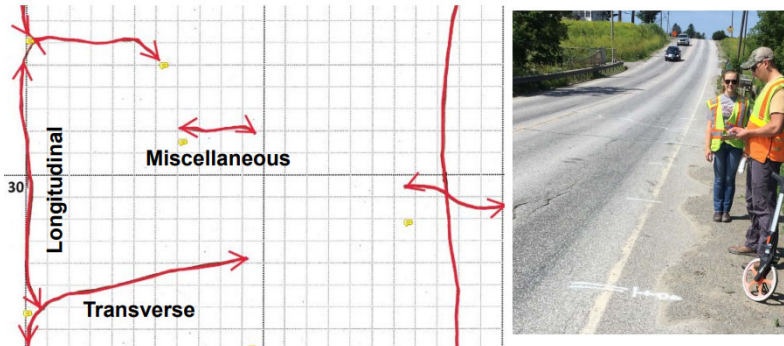
E-2. Per Capita Transportation Sector Energy Consumption, 2015 (U.S. EIA 2017)



ENVIRONMENTAL POLICY

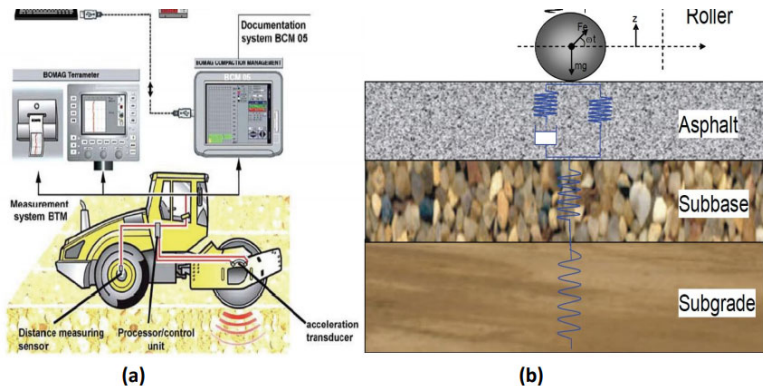
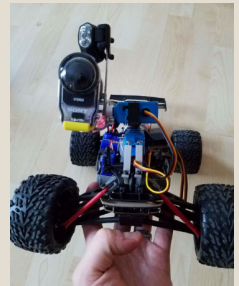
- VT Transportation Energy Profile
- Electric Vehicle Planning and Outreach
- Climate Change Policy and Interagency Coordination
- Water Quality
- Wildlife Planning
- Assistance with VW Settlement EV Charging Grants
- Act 250 at 50 Commission





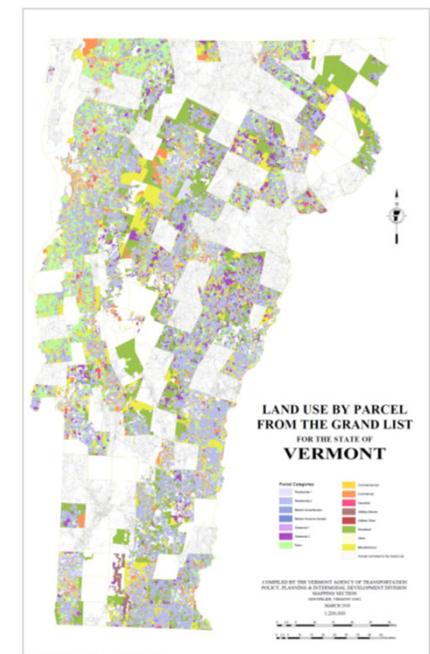
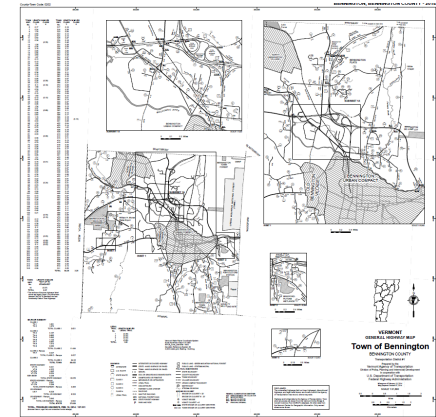
RESEARCH SECTION

- Federally mandated research program
- Eight research projects completed
- Technical Transfer through VTrans Research Symposium, Newsletter
- VTrans-UVM Transportation Research Collaborative, expanding to other VT Institutions
- New England Transportation Consortium, TRB and AASHTO participation



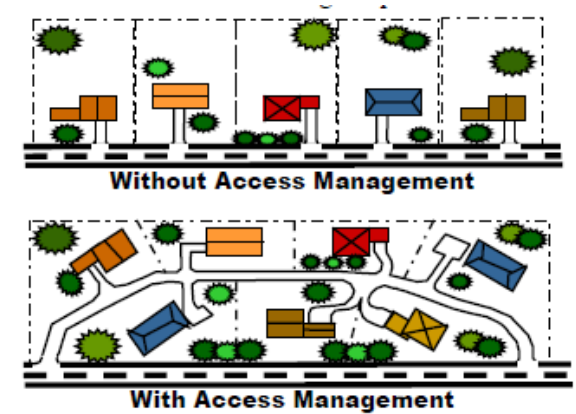
MAPPING SECTION

- Town Highway Maps
- Annual Town Highway Mileage Certificates
- Maintains statewide road centerline GIS data used by municipalities, regions and state
- GIS and data analysis to support other agency activities
- Town highway reclassification



PERMITTING SERVICES

- Permits to Work in State Highway Right-of-Way (Section 1111 Permit)
- Act 250 Application Review
- Act 145 (2014) Transportation Impact Fee management



VTrans Policy, Planning and Research Bureau Overview

Contact	Topics
<p>Joe Segale, P.E./PTP Policy, Planning and Research Bureau Director 802-477-2365 Joe.segale@vermont.gov</p>	<ul style="list-style-type: none"> • Bureau Management • Flood resilience • Corridor Planning • Automated Vehicles
<p>Costa Pappis, CPM, AICP CTP Policy & Planning Manager 802-828-5790 costa.pppis@vermont.gov</p>	<ul style="list-style-type: none"> • Statewide Transportation Planning • Modal Plans • Grants • National & International Policy Coordination
<p>Amy Bell Planning Coordinator 802-828-2678 Amy.bell@vermont.gov</p>	<ul style="list-style-type: none"> • Transportation Planning Initiative • Chittenden County RPC and Metropolitan Planning Organization Representative • State Transportation Improvement Program
<p>Daniel D. Dutcher Environmental Policy Manager 802-498-4540 daniel.dutcher@vermont.gov</p>	<ul style="list-style-type: none"> • Climate Change • Electric Vehicles • Wildlife • Water Quality • Air Quality
<p>Johnathan Croft Mapping Section Chief 802-828-2600 johnathan.croft@vermont.gov</p>	<ul style="list-style-type: none"> • Town highway maps and mileage certification • Roadway re-classification • GIS for Transportation
<p>Craig S. Keller, P.E. Chief of Permitting Services 802-279-1152 craig.keller@vermont.gov</p>	<ul style="list-style-type: none"> • Permits to Work in State ROW (Section 1111 Permit)
<p>Christopher Clow, P.E. Transportation Engineer 802-828-0513 christopher.clow@vermont.gov</p>	<ul style="list-style-type: none"> • Act 250 Traffic Impact Study Review • Act 145 Transportation Impact Fees
<p>Dr. Emily Parkany, P.E. Research Manager 802-272-6862 emily.parkany@vermont.gov</p>	<ul style="list-style-type: none"> • Agency research projects • UVM Research Project Management • Northeast and US National Research Programs