

Career Technical Education: Automotive Programs

Jay Ramsey
Assistant Director, Student Pathways Division
State Director, CTE

April 24, 2019

AGENDA

Overview of CTE

Vision and Goals

Review of Current Initiatives Impacting
CTE

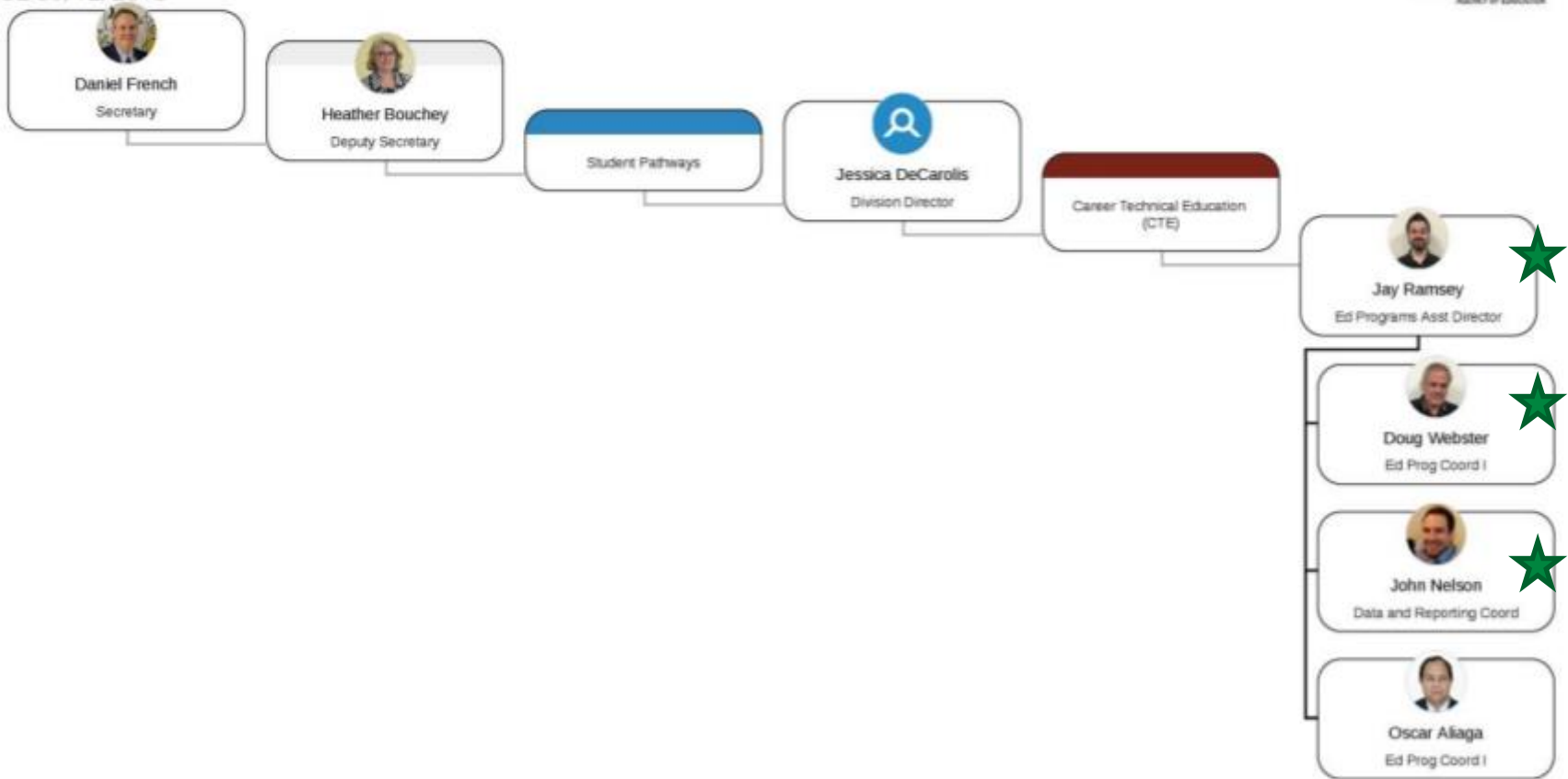
Overview of automotive programs

H. 316

H. 193

AOE STUDENT PATHWAYS

AGENCY OF EDUCATION



Role of the Agency of Education

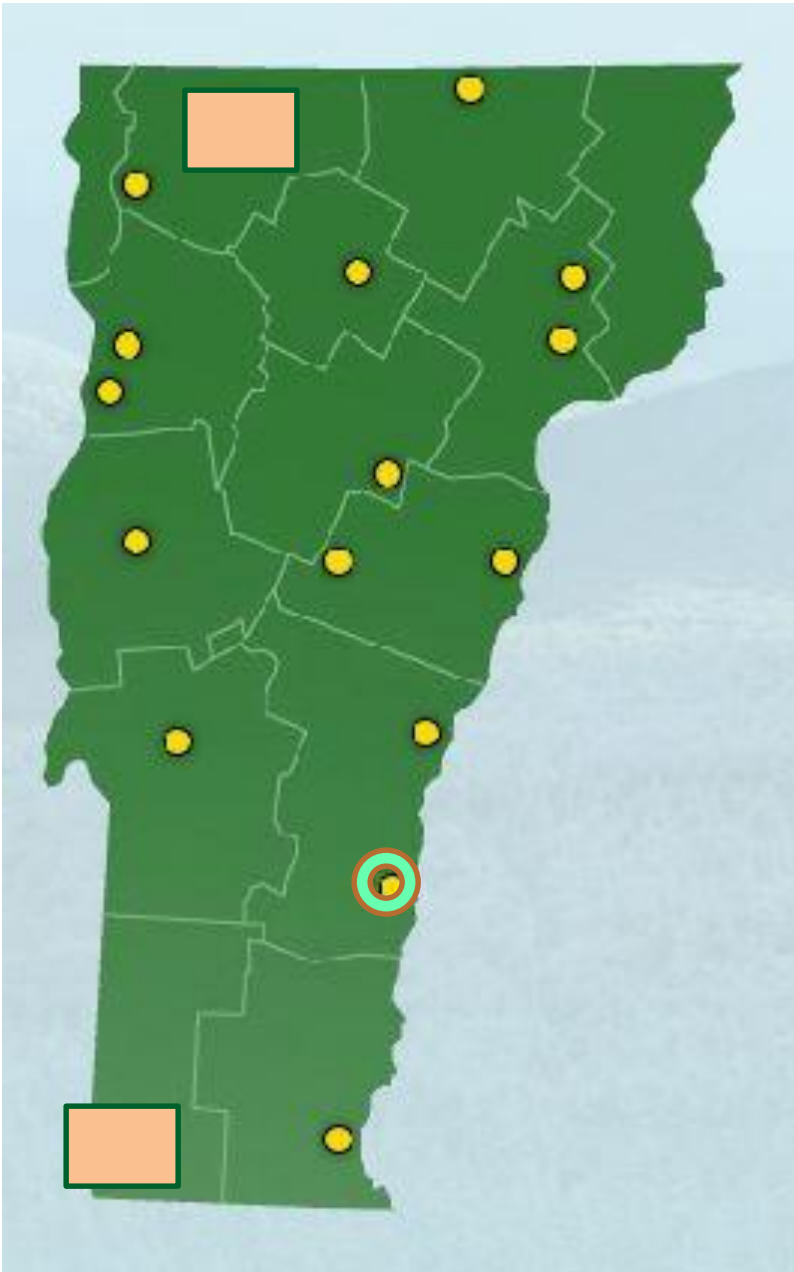
“...provide leadership, support, and oversight to ensure that the Vermont public education system enables all students to be successful.”

Systems level work

Policy work

Managing taxpayer investments

Map of CTE in VT



- “Regional” centers serve multiple high schools
- Primarily available to 11th & 12th graders
- 9th & 10th grade intro. = some
- Summer Programs = some
- Adult Tech. Ed. = all
- 16 of 17 centers offer automotive technology

Strategic Vision for CTE

Our **vision** for career technical education is:

All Vermont learners attain their post-secondary goals by having access to career and technical education systems that are equitable, efficient, integrated and collaborative.

High Quality &
Aligned



Collaboration
Among &
Coordination
Between



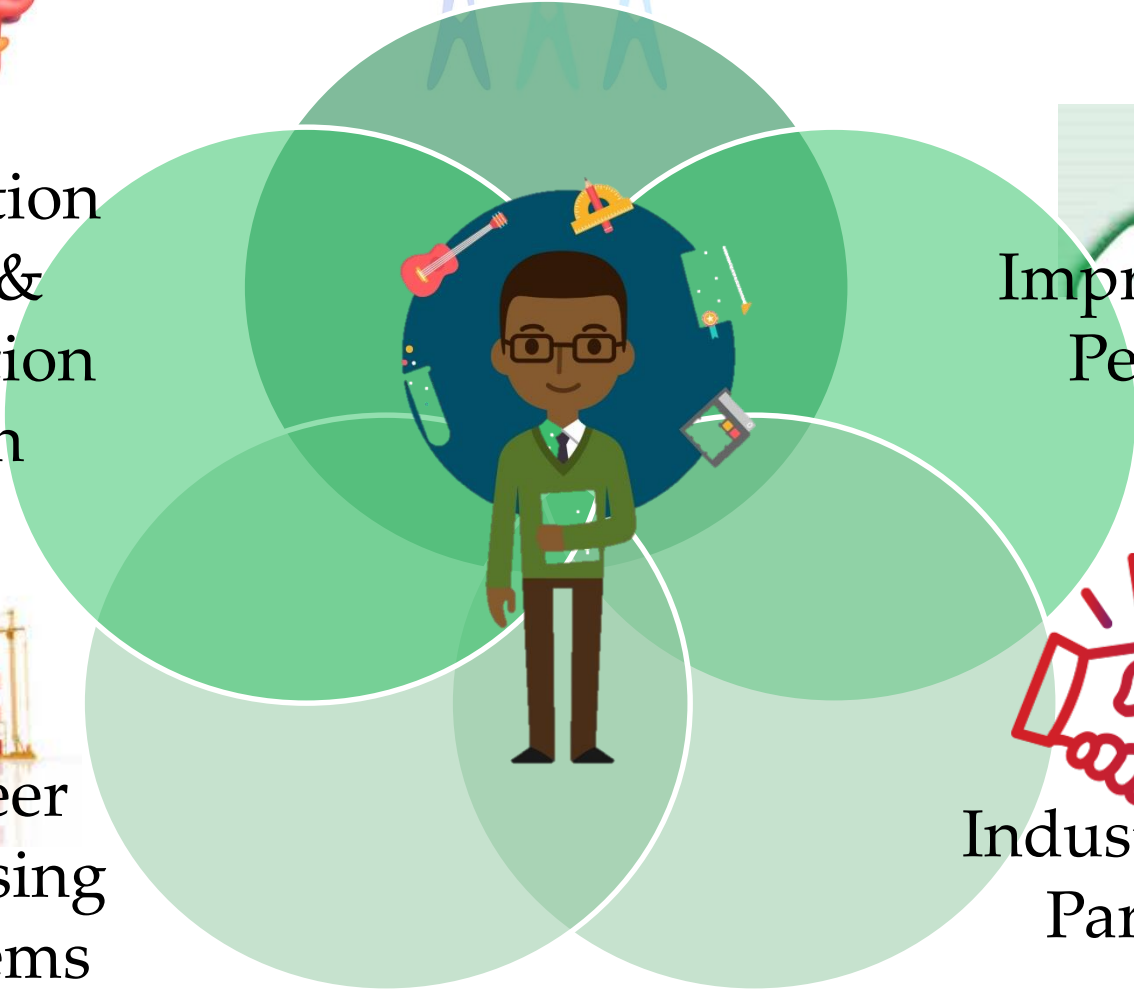
Improve Public
Perception



Career
Advising
Systems



Industry as a
Partner



Recent Legislative Activity

- 2013
 - Act 77 of 2013 “Flexible Pathways”
- 2014
 - **Workforce Innovation and Opportunity Act – Federal**
- 2015
 - **Every Student Succeeds Act – Federal**
 - Act 51 of 2015 “Economic Development”
- 2017
 - Act 69 of 2017 “Workforce Development”
- 2018
 - Act 173 of 2018 “Enhancing the effectiveness, availability, and equity of services provided to students who require additional support”
 - Act 189 of 2018 “Economic Development”
 - **Strengthening Career & Technical Education Act (2018) – Federal**

Automotive Program Stats

Fall 2018 Enrollments: 322

Cumulative Placements after 3 years ('13-'15):

Placement	%
Employed, related field	41.46%
Employed, unrelated field	30.53%
Post-sec ed/training, related	13.45%
Post-sec ed/training, unrelated	5.32%

Automotive Program Stats

Dual Enrollment Opportunities Already in Place

- simultaneous high school and college credit

Industry Recognized Credentials (2017-'18)

- NATEF/ASE – Maint. & Light Repair (355)
- S/P2 - Mechanical Repair Safety (157)
- Vermont State Inspection (11)

Working for the Community

Most centers have an embedded “student entrepreneurship” function

EXAMPLE OF SERVICES FOR ELDER:

Center for Technology, Essex

“Community Appreciation Days held for Senior Citizens. The first event of the year is a chance for students to show their skills by providing vehicle maintenance...”

Program Specs

Secondary CTE:

Focus on

- “maintenance & light repair” (7 areas)
- Work-based learning/Co-Op where appropriate

Adult CTE:

When programs are offered:

* To teach individuals to maintain their own cars, or to be a technician training/prep program

Existing Funding

Secondary CTE:

- Resident, any age, without a diploma
- Paid from school districts portion of ed fund
- ** free to the participant**

Adult CTE:

- Resident, any age, completed high school and who needs more CTE for entry or advancement
- ** not free to participant**

H. 316

- ✓ Aims to assist vulnerable populations
- ✗ Adds an out of scope position to AOE
- ✗ Proposes to create automotive programs where they already exist
- ✗ Potentially changes the nature and focus of high school CTE programs
- ✗ Puts a burden on instructors away from teaching to supervising trainees

H. 316

- ✗ Doesn't address liability of repairs that fail, worker's compensation, and general facility liability
- ✗ Technical centers are not "qualified service stations/garages (23 VSA 1222 & 1227)
 - Certified mechanics must be at least 18
- ✗ Doesn't address the expense of inspection related equipment
- ✓ Potential for connection with adult CTE and broader workforce training initiatives

H. 193 - AmeriCorps

- Governor's recommended budget included \$200k for VSC/Vermont Tech to implement an early associate's degree for CTE students
- Will this be a better use of scarce resources in support of workforce development?

QUESTIONS?

Jay Ramsey
Assistant Director, Student Pathways Division
State Director, CTE

jay.ramsey@vermont.gov