

REVISED COORDINATES

NUMBER	OLD NORTHING (D.L.)	EASTING	REV. NORTHING (REV.)	EASTING
522A	729299	156782	729700	1567069
544	724895	156815	724905	1568048
545	724610.4	156986.5	724611.2	1569833.3
504	738401.9	1584461.9	738402.7	1584464.8

NUMBER DISTANCE DIRECTION

SUB	SUBST	S	E	N	W
L504	504.8	S	26°09'29"	E	
L504	504.8	N	88°09'29"	W	

MONUMENT TABLE

- 59 IRS, LRSC cap, 1" high, found stone pile
- 560 IRS, VT cap, 2.6" high
- 561 IRS, VT cap, 1.1" high
- 564 Calculated Corner
- 150 IRS, VT cap, 1.5" high, on extended line, not corner
- 170 IRS, VT cap, 1" high, bottom of bank
- 522 IRS, VT cap, 1.4" high
- 523 IRS, VT cap, 0.9" high
- 168 IRS, VT cap, 1.3" high, base 18" beech
- 167 IRS, VT cap, flush, behind guide rail
- 400-469 FENO monument, State of VT cap, 0.3" high
- 2020 5/8" IRF, JPK cap, 1.4" high
- 5228 IRS, VT cap, 0.3" high
- 5447 IRS, LRSC cap, 2.2" high
- 5447 IRS, LRSC cap, 1.1" high
- 5234 IRF in stosses
- 215 IRF
- 166 IRS, VT cap, 1" high
- 5446 IRS, VT cap, 1.7" high
- 5232 "x" in root tree based on three sides
- 616 IR per Ref #2
- 614 IR per Ref #2
- 607 IR in stosses per Ref #3
- 613 IR per Ref #2
- 606 IR per Ref #5
- 605 IR per Ref #5
- 604 Ref #5
- 603 Ref #5
- 602 Ref #5
- 601 Ref #5
- 500 IR per Ref #4
- 518 IR, VT cap, 1.5" high, 0.6" high
- 104 5/8" IRS, LRSC cap, 0.8" high
- 354 5/8" IR, flush per Ref #1
- 5008 5/8" IRS, LRSC cap, 1.1" high
- 5009 5/8" IRS, LRSC cap, 1.1" high
- 5010 5/8" IRS, LRSC cap, 1.3" high
- 5011 5/8" IRS, LRSC cap, 1.1" high
- 5013 5/8" IRS, LRSC cap, 1.1" high
- 5260 5/8" IRS, LRSC cap, 1.6" high
- 5261 5/8" IRS, LRSC cap, 1.5" high

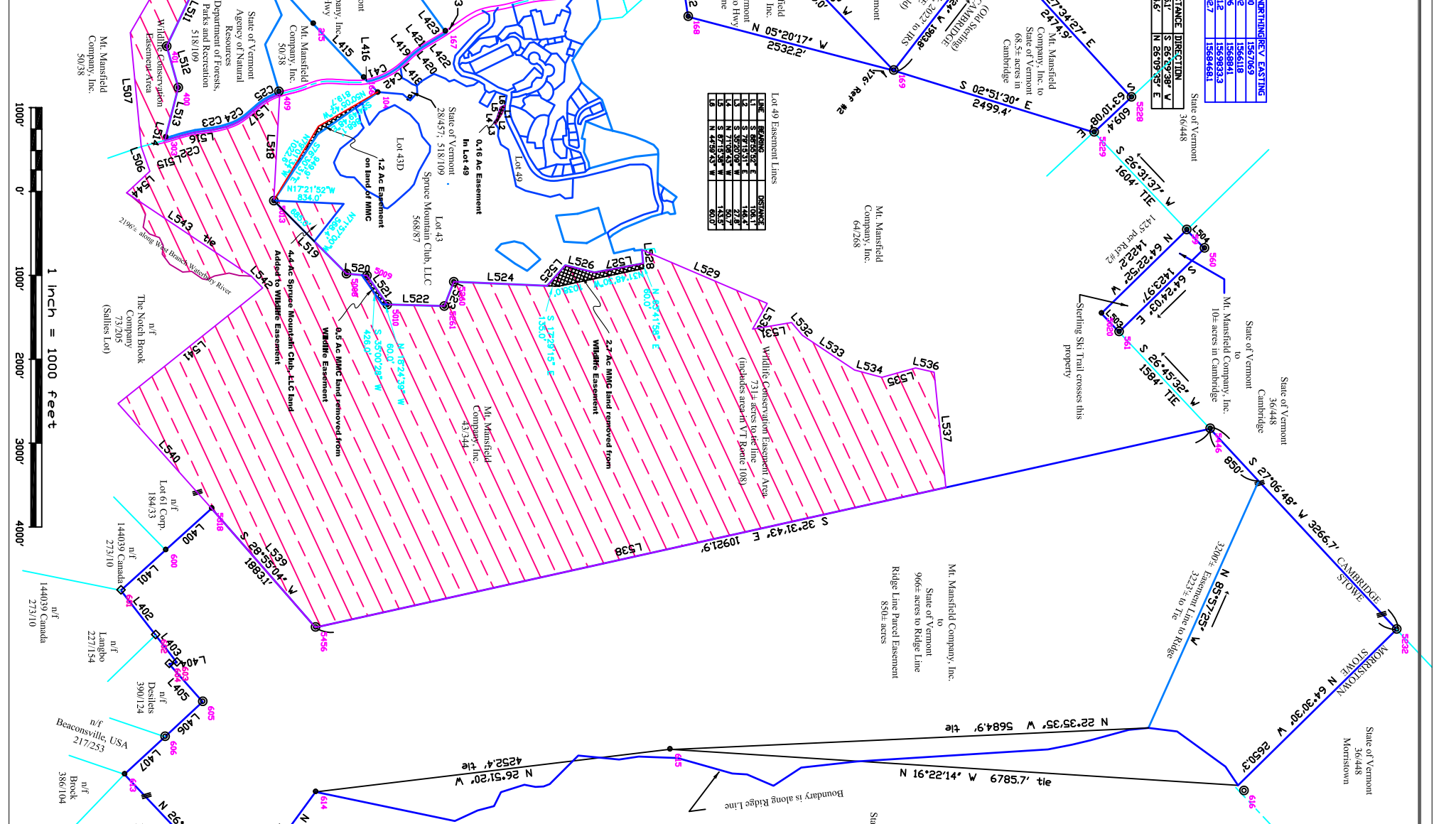
NUMBER DISTANCE DIRECTION

NUMBER	DISTANCE	DIRECTION	RADIUS	ARC LENGTH	CURVED LENGTH
C41	25750.9'	N	43°03'48"	899.7	366.7
C42	6333.07'	N	56°19'30"	899.7	356.8
C22	6637.28'	N	34°58'48"	2503.8	889.5
C23	1138.48'	N	31°17'25"	1363.7	276.7
C24	8523.57'	N	50°24'55"	673.8	298.7
C25	8523.57'	N	49°24'55"	705.3	311.5

State of Vermont
January 22, 1916

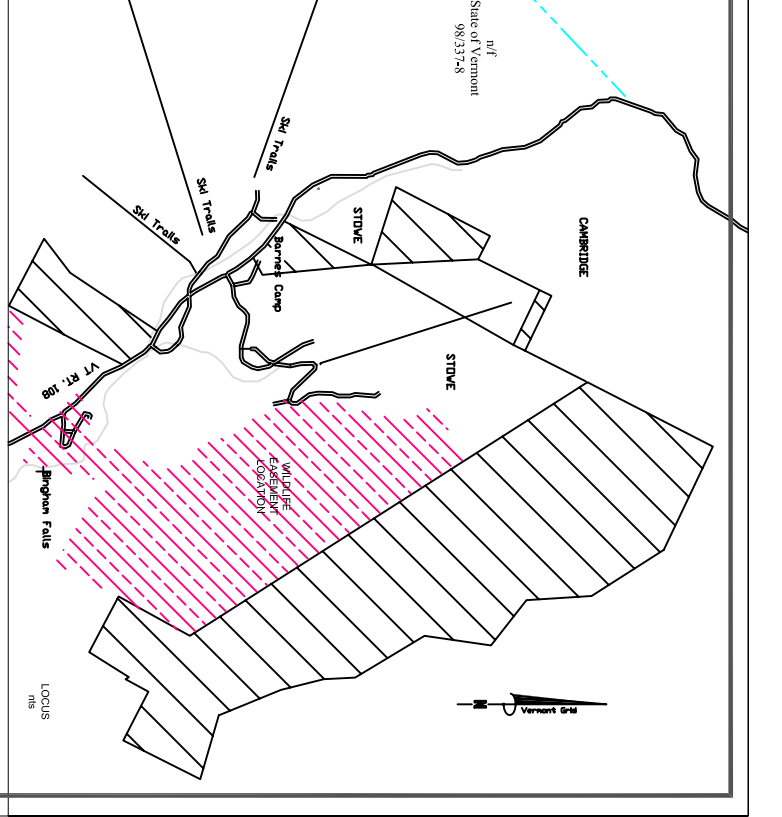
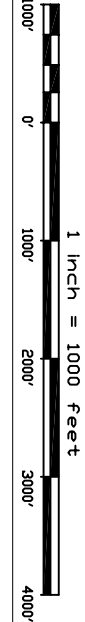
LEGEND

- Property Line
- Iron Pipe Found
- Iron Rod Found
- 5/8" Iron Rod Set, LRSC Cap
- Right of Way
- Blaze
- Easement



Lot 49 Easement Lines

LINE	BEARING	DISTANCE	AREA
1	N 72°53'30" W	1538.6'	0.0524 AC
2	S 26°41'20" E	1691.1'	0.0524 AC
3	N 26°41'20" E	1691.1'	0.0524 AC
4	S 26°41'20" W	1691.1'	0.0524 AC
5	N 72°53'30" W	1538.6'	0.0524 AC
6	S 26°41'20" E	1691.1'	0.0524 AC
7	N 26°41'20" E	1691.1'	0.0524 AC
8	S 26°41'20" W	1691.1'	0.0524 AC
9	N 72°53'30" W	1538.6'	0.0524 AC
10	S 26°41'20" E	1691.1'	0.0524 AC
11	N 26°41'20" E	1691.1'	0.0524 AC
12	S 26°41'20" W	1691.1'	0.0524 AC
13	N 72°53'30" W	1538.6'	0.0524 AC
14	S 26°41'20" E	1691.1'	0.0524 AC
15	N 26°41'20" E	1691.1'	0.0524 AC
16	S 26°41'20" W	1691.1'	0.0524 AC
17	N 72°53'30" W	1538.6'	0.0524 AC
18	S 26°41'20" E	1691.1'	0.0524 AC
19	N 26°41'20" E	1691.1'	0.0524 AC
20	S 26°41'20" W	1691.1'	0.0524 AC



NOTES:

1. Bearings are based on Vermont Grid North, coordinates are based on NAD 83 (1996), U.S. feet.
2. Highway limits at subject properties are 4 rods wide per request of representative for the State of Vermont.
3. Area is calculated to highway centerline.
4. Other easements, recorded and unrecorded may exist.
5. Town lotting lines and town lines shown are based on limited information and should not be regarded as definitive.
6. Wildlife easement lines are intended to coincide or be interior to boundaries of the Mt. Mansfield Company, Inc. Not all lines were surveyed by LRSC.

REFERENCES:

1. Land Retained by the State of Vermont known as the State Ski Dome, by Little River Survey Company, LLC, May 2003, Job #03049
2. Plan of Land in Stowe & Cambridge, Vermont, Property of Mt. Mansfield Company, Inc., by J.R. Associates, Inc., January 1977
3. Plan of Page Property in Stowe, Vermont, by Spear Surveying, Inc., November, 1995, Job #72-208
4. Phase III, Parcels 40-51 & 59-62, Robinson Springs Properties, by Robert W. Frey, L.S., May, 1983, Job #193B, January 1977
5. Phase III, Parcels 57-57A & 58, Robinson Springs Properties, by Robert W. Frey, L.S., July 1989, Job #193B, Map Book 8 Page 38, Job # 1934F
6. George F. Adams & Co., Inc. Lands, Sterling Range, Stowe, Vermont, by J. Phillip Reih, March 1971, Job #1-3
7. Land Swap Between Mt. Mansfield Company, Inc. and The State of Vermont, by Little River Survey Company, LLC., November 2003, Job #03049-2
8. Land of Mt. Mansfield Company, Inc., being conveyed to Spruce Peak Realty, LLC, by Little River Survey Company, LLC., June 2003, Rev. Dec 1, 2003, Job #03049-1

NUMBER DISTANCE DIRECTION

L401	1772'	S	25°06'30"	E	
L402	6744'	N	38°12'30"	E	
L403	4132'	S	31°30'30"	E	
L404	922'	S	28°32'30"	E	
L405	6018'	S	62°55'00"	E	
L406	6127'	S	62°45'00"	E	
L407	6577'	S	62°45'30"	E	
L408	3265'	S	26°24'58"	E	
L409	6504'	S	26°31'48"	E	
L410	5511.7'	N	81°57'48"	E	
L411	5852.44'	S	62°52'44"	E	
L412	6123'	N	61°23'24"	E	
L413	213'	S	33°48'07"	W	
L414	995.8'	S	58°35'16"	E	
L415	879.2'	S	58°35'16"	E	
L416	66.7'	N	26°41'31"	E	
L418	96.7'	N	60°53'20"	W	
L419	117.9'	N	62°41'19"	W	
L420	68.4'	N	60°01'51"	W	
L421	74.6'	N	58°48'49"	W	
L422	176.7'	N	58°48'49"	W	
L423	271.8'	N	51°11'14"	W	
L424	271.8'	N	51°11'14"	W	

NUMBER DISTANCE DIRECTION

L501	6433.56'	V	135.62'	S	80°10'02"	E	1428.53'
L502	7951.01'	V	1763.6'	S	29°55'03"	E	4711'
L503	8739.12'	V	348.2'	S	29°44'42"	E	801.6'
L504	8413.04'	V	594.9'	S	13°34'14"	E	748.9'
L505	8413.04'	V	594.9'	S	105°06'15"	W	338.9'
L506	8413.04'	V	594.9'	S	35°27'07"	W	416.7'
L507	5416.28'	V	512.0'	S	85°05'07"	W	284.8'
L508	8419.56'	V	613.1'	S	64°13'31"	E	1381.6'
L509	8419.56'	V	36.9'	S	36°21'43"	E	769.62'
L510	5311.7'	V	81.7'	S	62°52'44"	E	1893.1'
L511	6055.09'	V	115.7'	S	58°40'47"	E	228.1'
L512	7911.55'	V	1659.9'	S	26°16'39"	W	1934.1'
L513	6311.15'	V	1227.9'	S	13°46'04"	W	1788.6'
L514	1433.04'	V	246.2'	S	62°50'10"	W	378.0'
L515	1824.93'	V	679.5'	S	88°44'12"	W	311.7'
L516	1729.15'	V	1114.3'	S	68°18'30"	W	362.6'
L517	6055.09'	V	115.7'	S	58°40'47"	W	228.1'
L518	7911.55'	V	1659.9'	S	26°16'39"	W	1934.1'
L519	6311.15'	V	1227.9'	S	13°46'04"	W	1788.6'
L520	1433.04'	V	246.2'	S	62°50'10"	W	378.0'
L521	1824.93'	V	679.5'	S	88°44'12"	W	311.7'
L522	1729.15'	V	1114.3'	S	68°18'30"	W	362.6'
L523	6055.09'	V	115.7'	S	58°40'47"	W	228.1'
L524	7911.55'	V	1659.9'	S	26°16'39"	W	1934.1'
L525	6311.15'	V	1227.9'	S	13°46'04"	W	1788.6'
L526	1433.04'	V	246.2'	S	62°50'10"	W	378.0'
L527	1824.93'	V	679.5'	S	88°44'12"	W	311.7'
L528	1729.15'	V	1114.3'	S	68°18'30"	W	362.6'

PLAT SHOWING LAND SWAP & WILDLIFE EASEMENTS BETWEEN
MT. MANSFIELD COMPANY, INC.
and
THE STATE OF VERMONT
Vermont Route 108
Stowe & Cambridge, Lamoille County, Vermont

SCALE: 1"=1000'

DRAWN BY: PSK
CHECK BY: WMK
DATE: JAN 2004

Rev: Apr 2006

Little River Survey Company, L.L.C.
P.O. Box 1208, 9535 Packer Street
Stowe, Vermont 05672
Telephone: 802-253-4247 Fax: 802-253-2269

Job: 03049-2