



ORGANIZATIONAL REPORT - APRIL 21, 2020

Supporting the State and Local Homelessness Response

We remain committed to assist in the management and care for our homeless and other vulnerable populations.

- Worked with DCF to re-house shelter guests and GA Voucher recipients
- Prepared and distributed 3 meals per day to all guests
- Ongoing collaboration with AHS, DCF, OEO, the Good Samaritan Haven, and several other local orgs. to safely manage emergency housing sites in Central VT
- Connecting residents to support services and resources
- Managing the procurement, preparation and distribution of all meals
- Assessing clients through coordinated entry process

Working with Central Vermont Medical Center in Mind

We have aggressively pursued actions to minimize hospital surge, including but not limited to:

- Managing the health and safety of emergency homeless and General Assistance shelters in the region
- Sourcing & procuring critical PPE equipment and other supplies for health care workers
- Connecting citizens to necessary resources and services to help them thrive and stay out of the hospital
- Disseminating and relaying COVID-19 safety information to the public

WNOC-RRCC BY THE NUMBERS

23,288	# of Meals Served to Date
795	# of Meals Served Daily
271	# of People Currently Housed
188	# of Shelter Units
7	# of Emergency Housing Facilities
550	# of Face Coverings Procured
682	# of Volunteer Hours to Date
900+	# of Volunteers in Network
138	# Community Call Center Interactions since 4/3/20
55+	# of community partner collaborations in progress
30	# of Days in Operation
33	# of ICS Staff Members

Reinforcing Vermont State COVID-19 Response Directives and Amplifying Local Efforts

- Actively promoting important infection prevention and control practice as directed by the Office of the Governor and the Dept. of Health
- Implementing the CDC/VDH guidelines to develop safety protocols for specific settings, such as food volunteer preparation and distribution
- Working closely with local volunteer groups and community organizations to maximize results
- Communicating local and state information across multiple mediums to create fluidity in knowledge and connection to local resources

WNOC-RRCC OVERVIEW

Mission

WNOC-RRCC seeks to bolster local and state response efforts and influence community connectedness to ensure fluidity in knowledge and ease of access to support systems.

Who We Are

WNOC-RRCC is a unified community response of local social service organizations from THRIVE, Central Vermont's Accountable Community for Health group.

Upon a request of local assistance from the Dept. of Health and the Homeless Response Task Force, members of THRIVE quickly and effectively operationalized WNOC-RRCC as the working arm of the THRIVE collaborative.

Since March 23, WNOC-RRCC has been affiliated with the Dept. of Health, State Emergency Operations Center, Central Vermont Medical Center, and countless other state and local partners.

What Does WNOC-RRCC Stand For?

Technically, Washington and Northern Orange Counties Regional Response Command Center. But here is what it means to us! We pronounce our name as "WIN-OCK-ROCK."

WIN = we will succeed in our efforts!

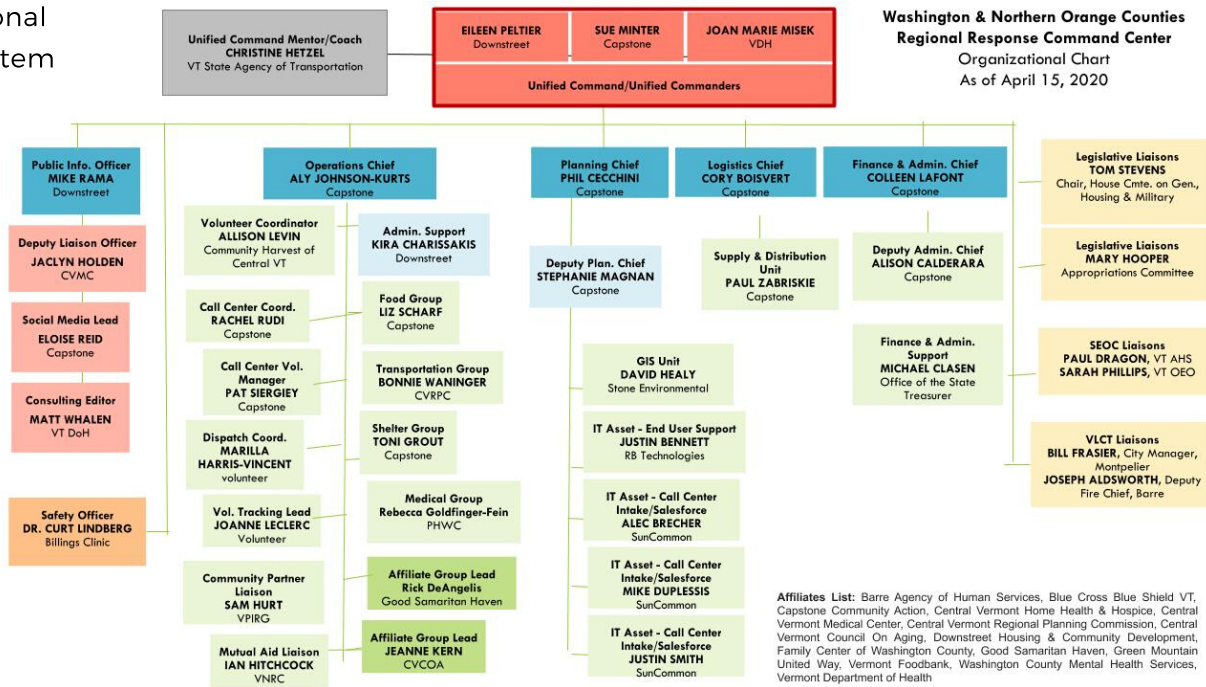
OCK = connector language, a symbol of our response

ROCK = a nod to our Central VT heritage! #BarreRockSolid!

Operation Model:

Incident Command System (ICS), derived from FEMA's National Incident Management System

Current Organizational Chart



Service Area

Our region of focus mirrors Central Vermont Medical Center's service area which, includes Washington County & the Northeast region of Orange County, including the communities of Brookfield, Orange, Washington, and Williamstown.

About THRIVE

Central Vermont's Accountable Community for Health

Formed in 2017, THRIVE is a consortium of dozens of cross sector community organizations working together to optimize the health and wellbeing of our community through informed, collaborative, and innovative solutions. WNOC-RRCC was formed as an extension of THRIVE to utilize the power of the collaborative to assist and maximize the response of state and local efforts.

Involved Organizations

- Billings Clinic
- Capstone Community Action
- Downstreet Housing & Community Dev.
- Dept. of Health
- Dept. of Transportation
- Central Vermont Medical Center
- Central Vermont Community Harvest
- Central VT Regional Planning Commission
- Central VT Home, Health, and Hospice
- Central VT Council on Aging
- Faith-based organizations
- Family Center of Washington County
- Good Samaritan Haven
- Green Mountain United Way
- Gusto's Bar
- HungerFree Vermont
- Morse Block Deli
- Mutual Aid Groups
- New England Culinary Institute
- People's Health & Wellness Clinic
- rB Technologies
- Stone Environmental
- Salvation Army
- SunCommon
- U-32 School
- Vermont Foodbank
- VT Natural Resources Council
- VT Public Interest Research Group
- Washington County Mental Health Services