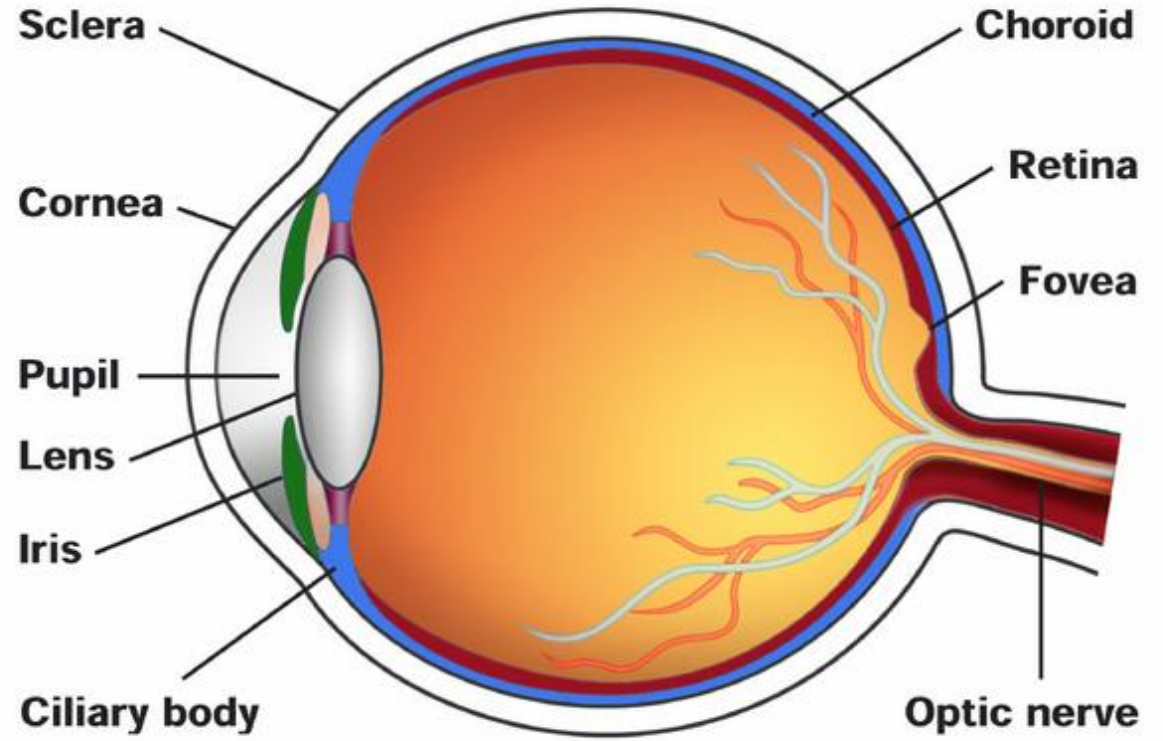
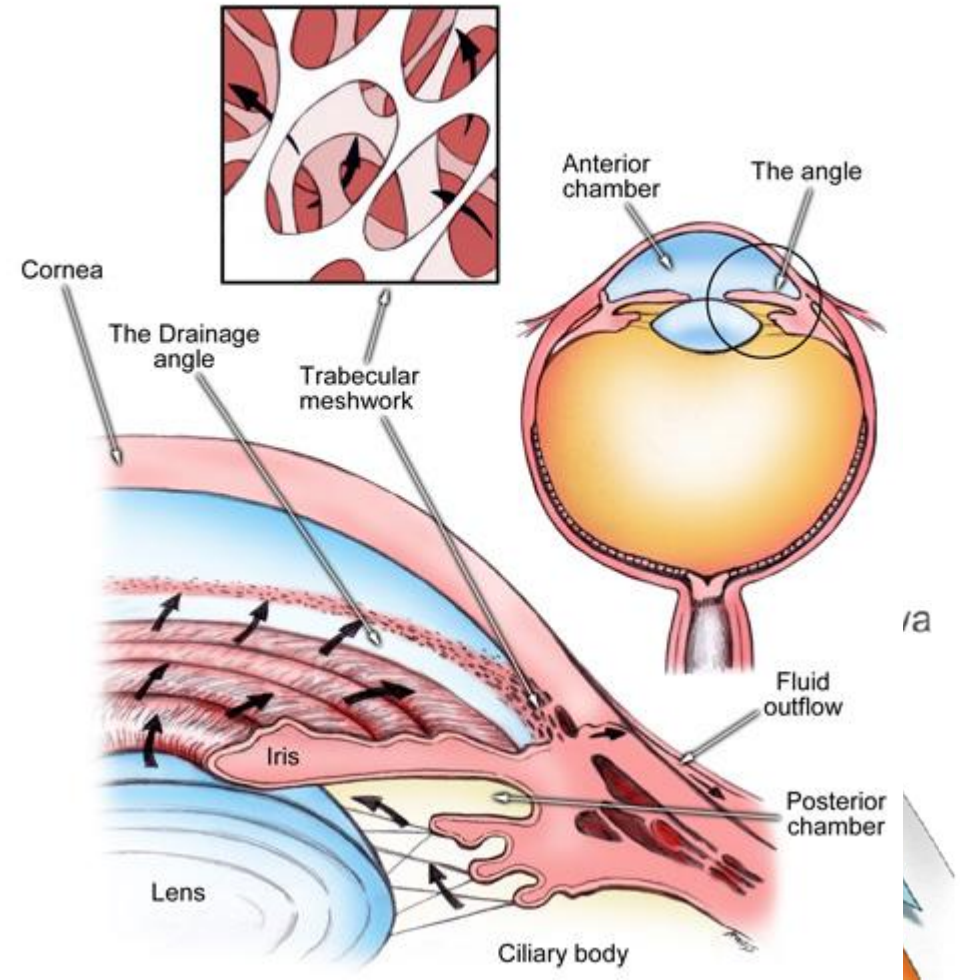
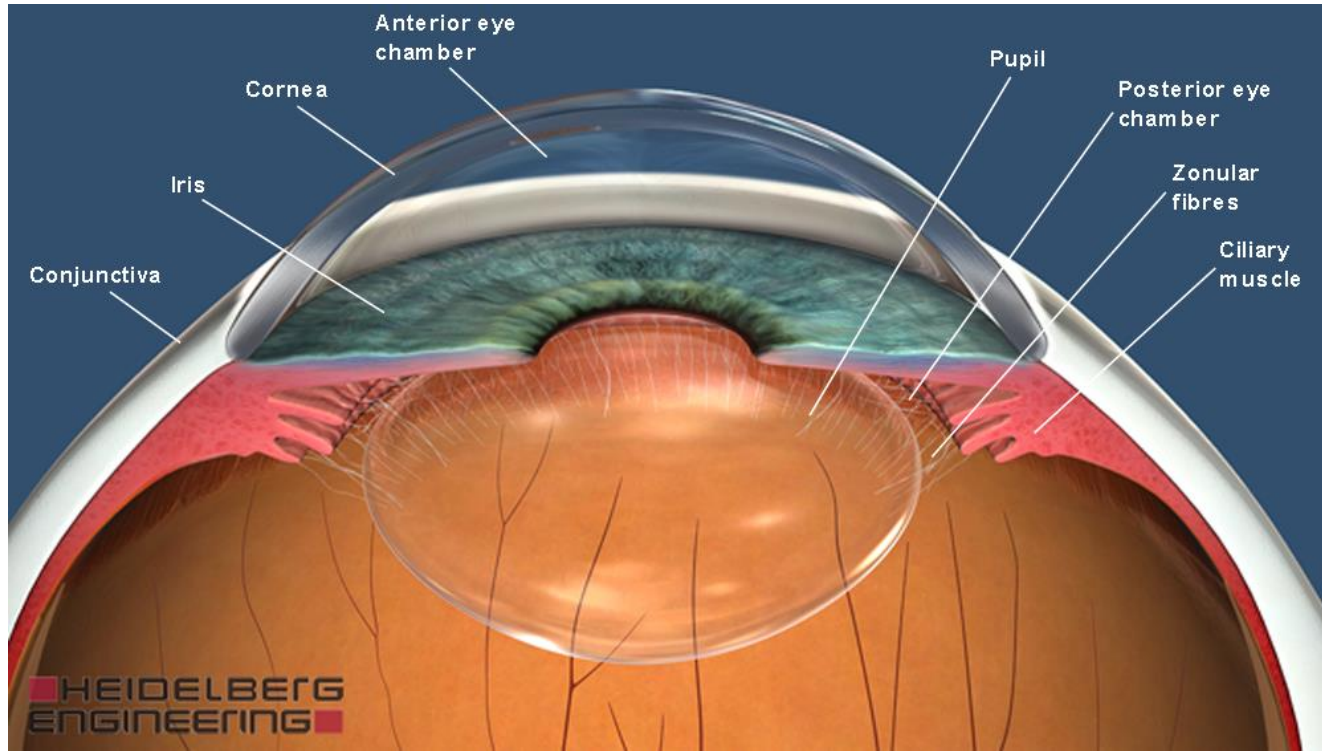


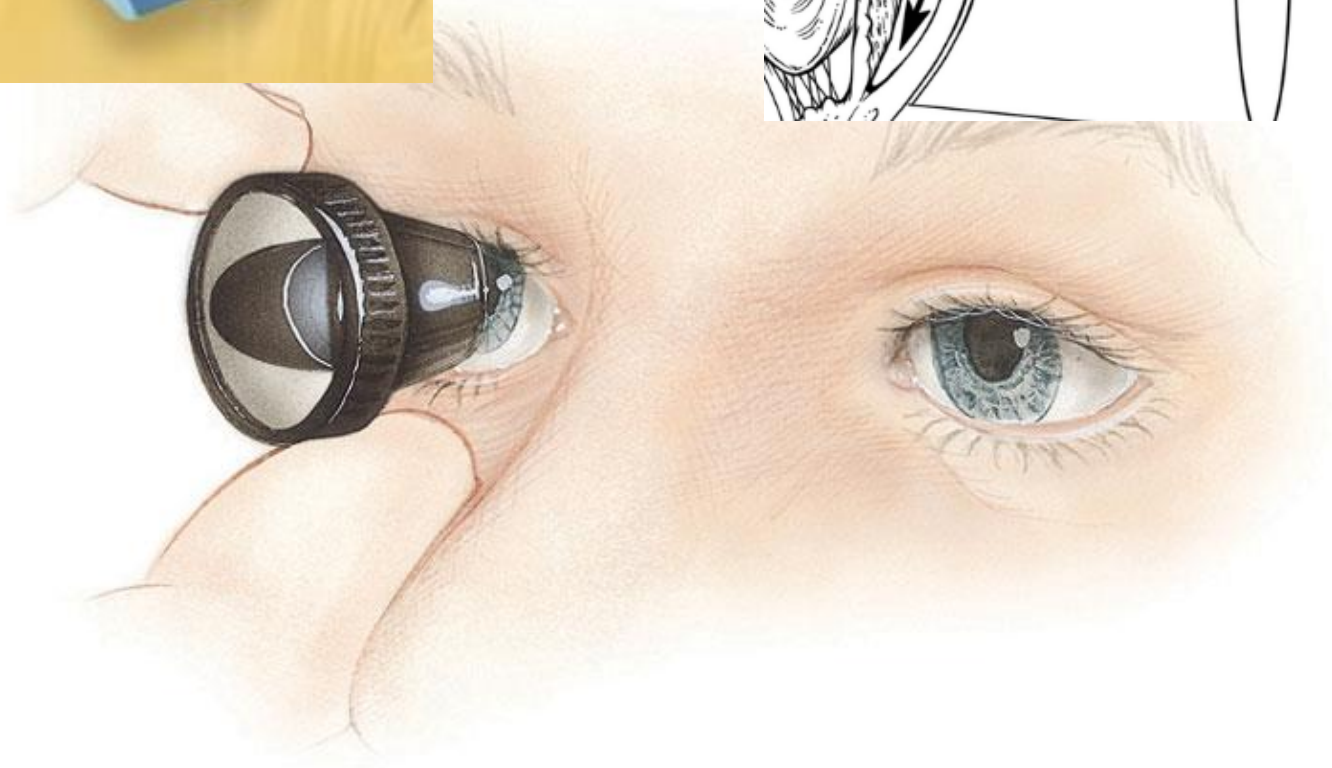
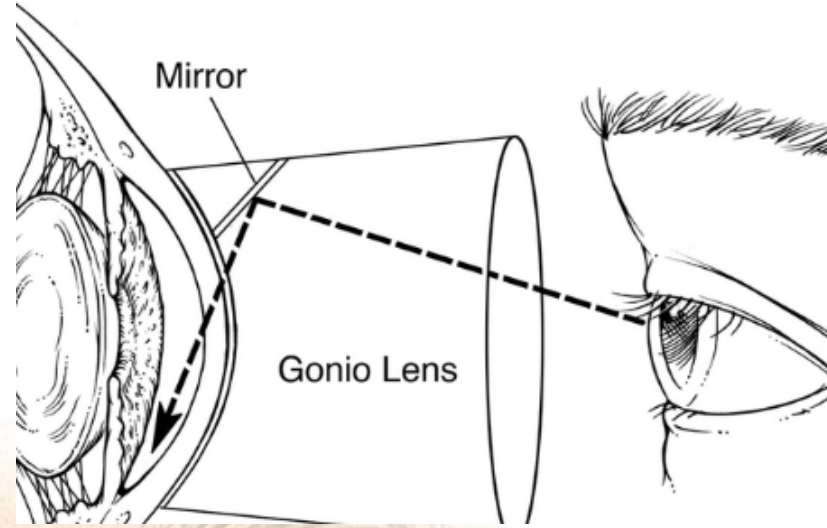
Selective Laser Trabeculoplasty: A Glaucoma Laser Surgery

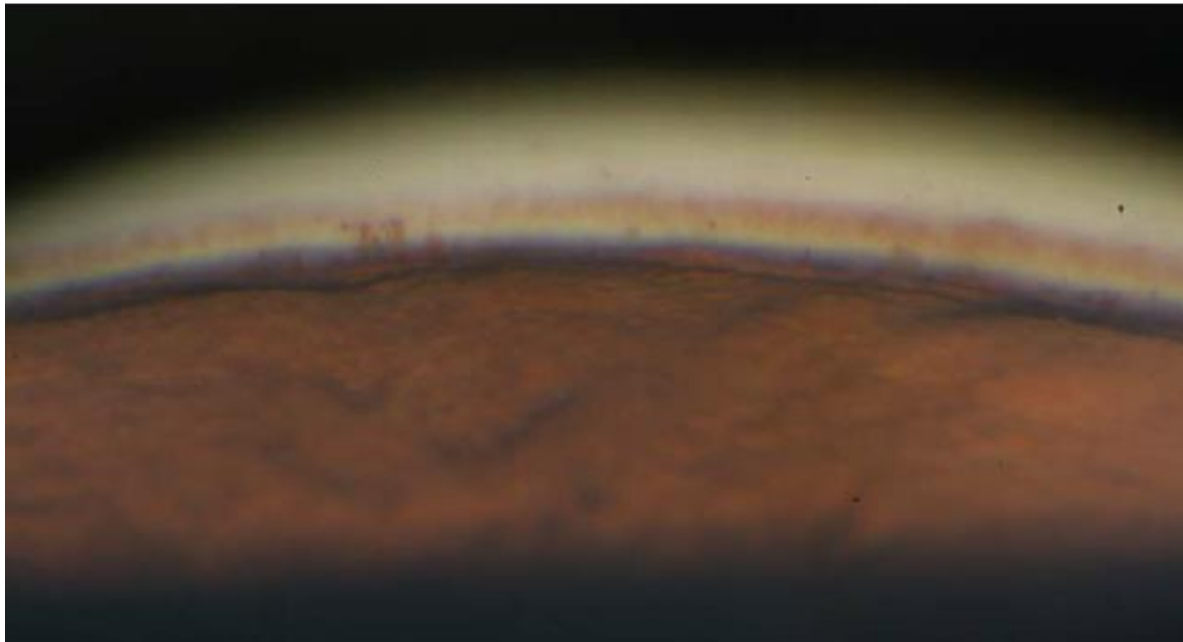
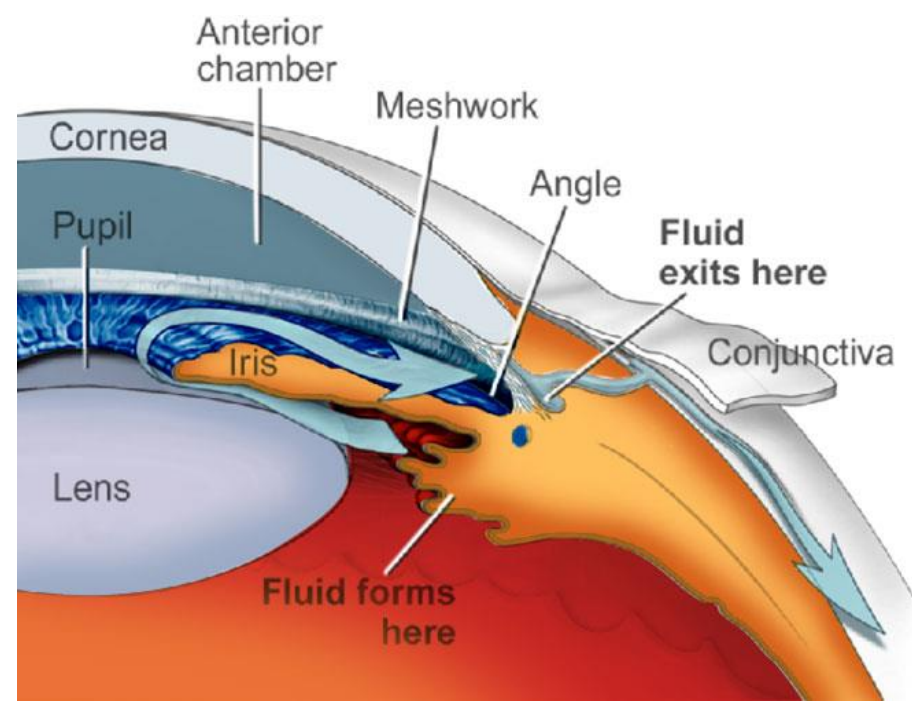
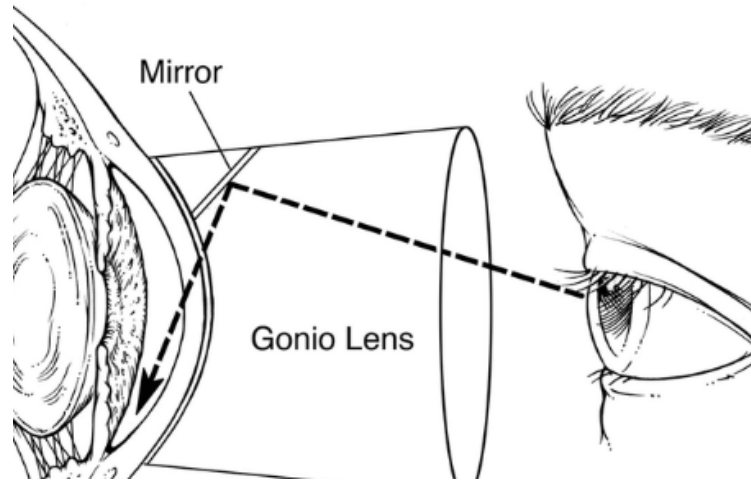
David Diaz, MA, MD

February 21, 2019

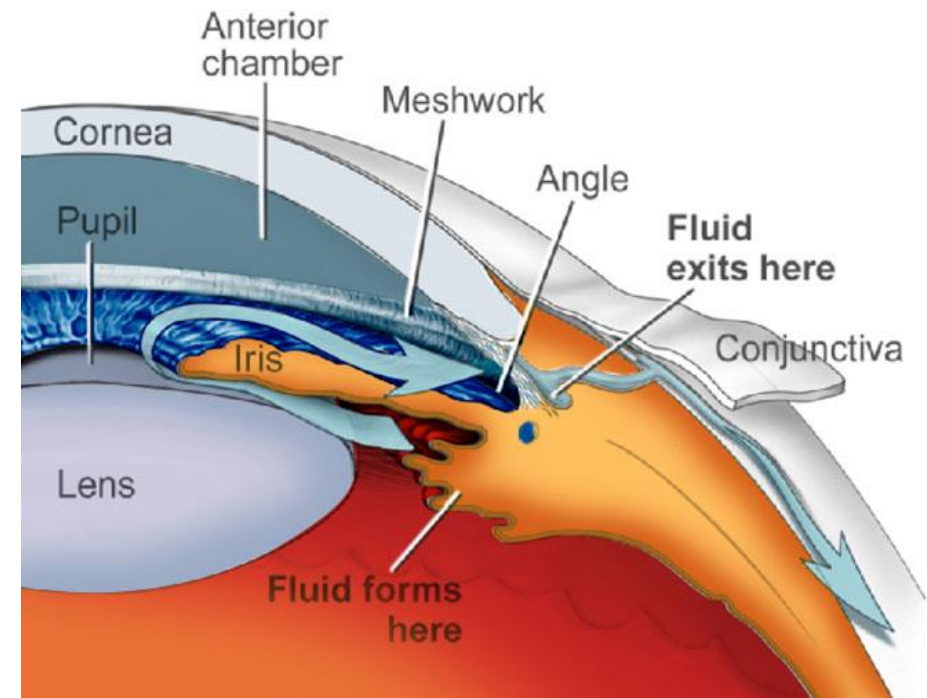
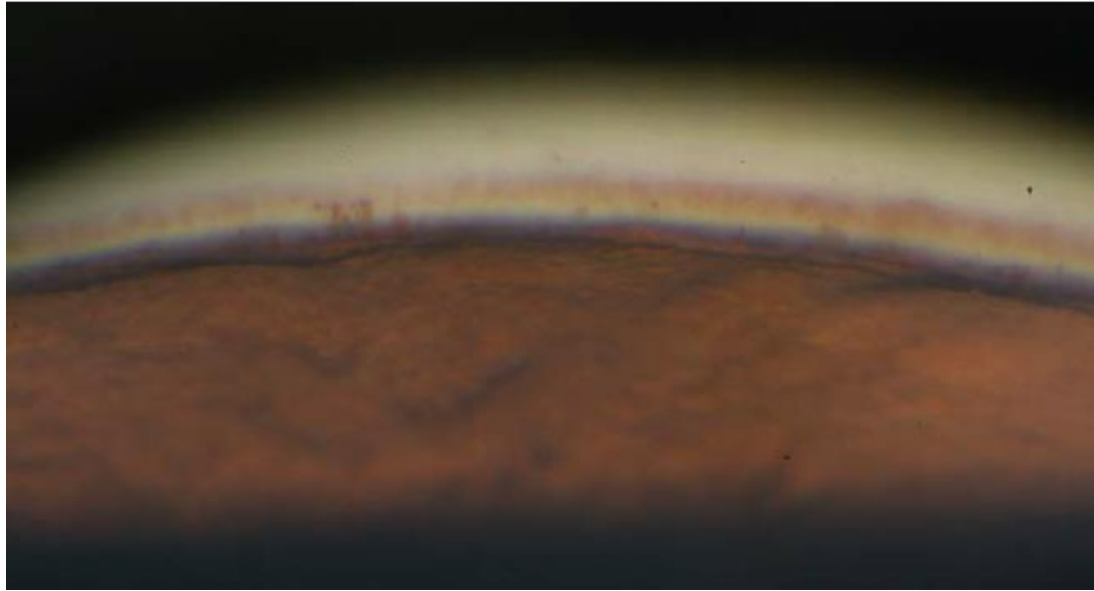












- Trabecular meshwork: approx. 0.6 mm tall (about 3-4 strands of hair)
- Aim 0.1 mm too anterior → miss target, no effect
- Aim 0.2 mm too posterior → injury to drainage canal
- Aim 0.5 mm too high → injury to cornea
- Aim 0.5 mm too low → injury to iris
- Without precision → failed procedure and possible exacerbation of disease