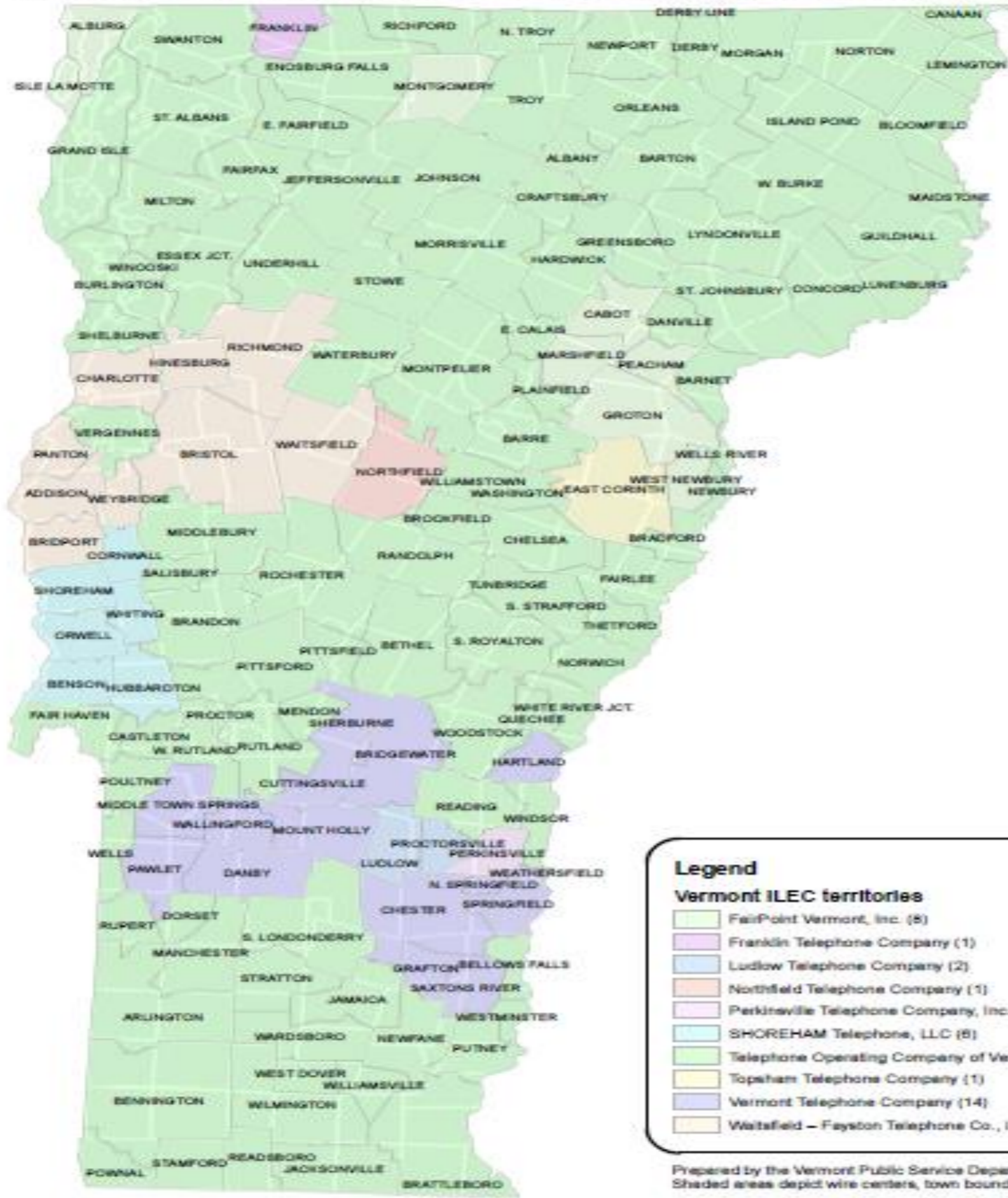




**Consolidated Communications**  
**January 2019 – House Energy and Technology**  
**Jeffrey Austin – VT Director of Government and External Affairs**



# Territories of Vermont Incumbent Telephone Companies



**Legend**

**Vermont ILEC territories**

- FairPoint Vermont, Inc. (8)
- Franklin Telephone Company (1)
- Ludlow Telephone Company (2)
- Northfield Telephone Company (1)
- Perkinsville Telephone Company, Inc. (1)
- SHOREHAM Telephone, LLC (8)
- Telephone Operating Company of Vermont LLC (105)
- Topsnam Telephone Company (1)
- Vermont Telephone Company (14)
- Waitsfield – Fayston Telephone Co., Inc. (9)

Prepared by the Vermont Public Service Department in 2015. Shaded areas depict wire centers, town boundaries are white.

<https://publicservice.vermont.gov/sites/dps/files/documents/Telecom/Exchanges%202013.pdf>



# Consolidated at a Glance



- Operations in 23 States
- 37,000 Fiber Network Miles, Top 10 Fiber Provider in the U.S.
- 10,000 On-Net Buildings
- 3,400 Fiber Connections for Wireless Providers
- 782,000 Data and Internet Connections
- Diverse Carrier, Commercial, Consumer Customer Base

# Broadband Technology Options

**DSL, ADSL2+Bonded, VDSL and Bonded** max speeds: 3 Mbps legacy, 15 Mbps next-gen, & 25 Mbps bonded, 50 Mbps and 100 Mbps

Primary Internet access solution for residential; available to businesses

Dedicated (not shared) Access delivered over copper

Asymmetrical & speed eligibility is distance-sensitive; speed tiers:

## ADSL2

15 / 1 Mbps

7 / 1 Mbps

3 / 0.768 Mbps

1.5 / 0.384 Mbps

## ADSL2+Bonded

25 / 2 Mbps

20 / 1.5 Mbps

10 / 1 Mbps

7 / 1 Mbps

3 / 0.768 Mbps

## VDSL

50 / 20 Mbps

30 / 10 Mbps

20 / 5 Mbps

## VDSL Bonded

100/40 or 80/20

60/20 or 60/10

40/10 or 40/2

**Carrier Ethernet (CES)**, up to 10G

Symmetrical

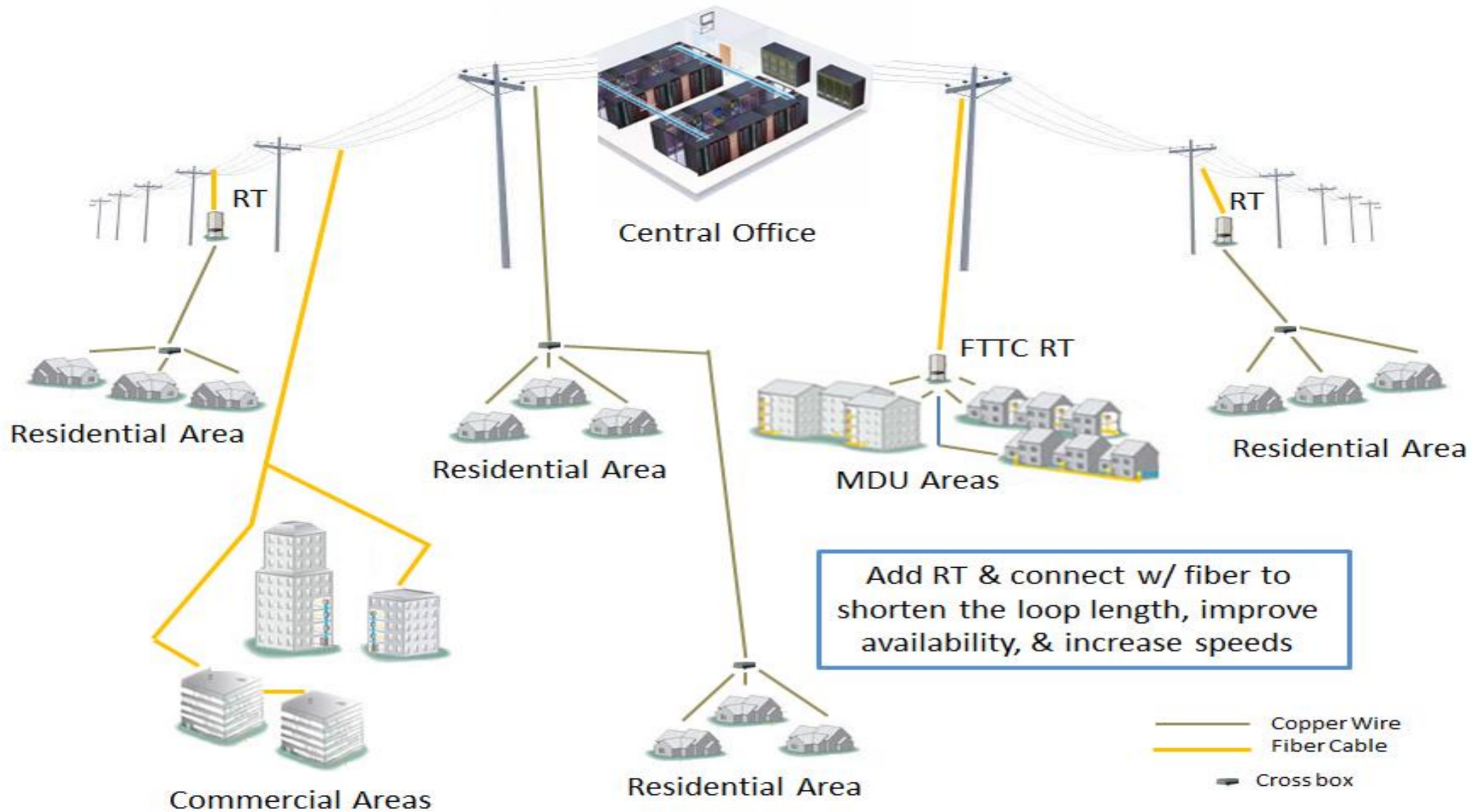
Dedicated (not shared) Access delivered over copper (up to 20 Mbps) or fiber

SLAs

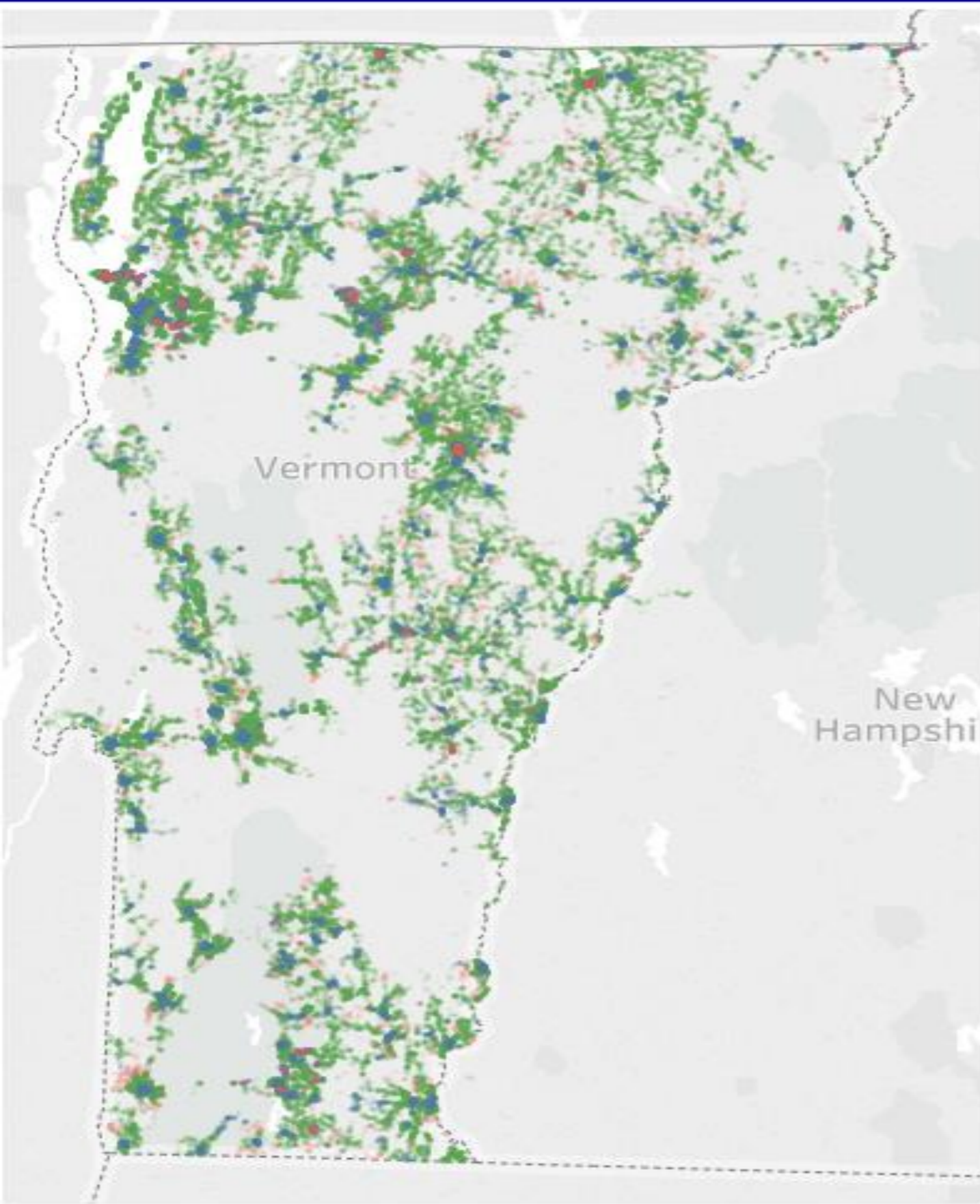
Internet & Private IP (Point to Point & Wide Area Network)



# How CCI Delivers Broadband



# Consolidated's Broadband Coverage Map - Vermont



- 100M to 1G
- 30M to 80M
- 7M to 25M
- 768K to 3M