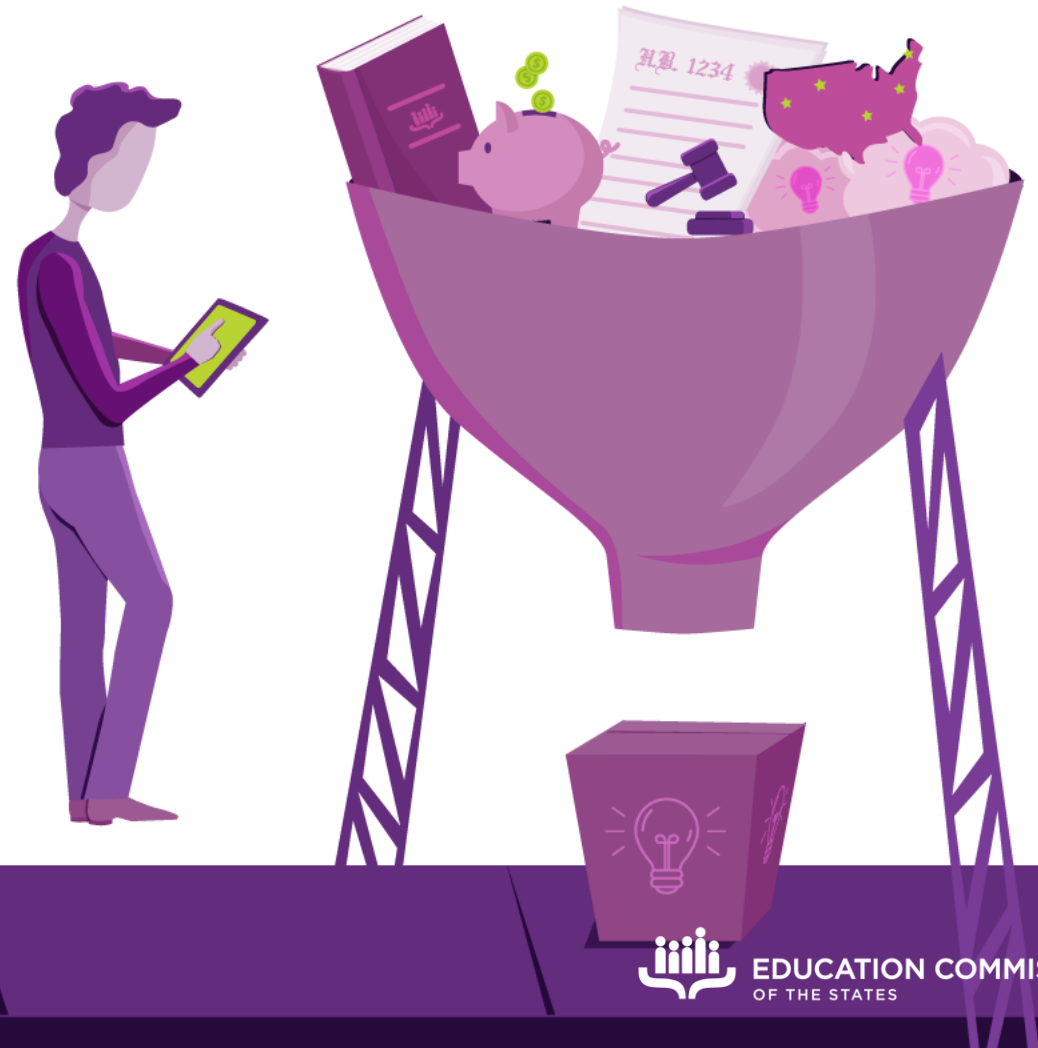


Proficiency-Based Education

Montpelier, Vermont
February 11, 2020



The essential, indispensable member of any team addressing education policy.



My agenda

- What is **proficiency-based learning**?
- How does it work **in other states**?
- How is it **incorporated into transcripts**?
- How is it used for **college admissions**?
- What are the **effects of implementation**?

What is proficiency-based learning?

Personalized learning allows students to progress as they master content and skills



What is proficiency-based learning?

1 | Learning is the constant. Time is the variable

What is proficiency-based learning?

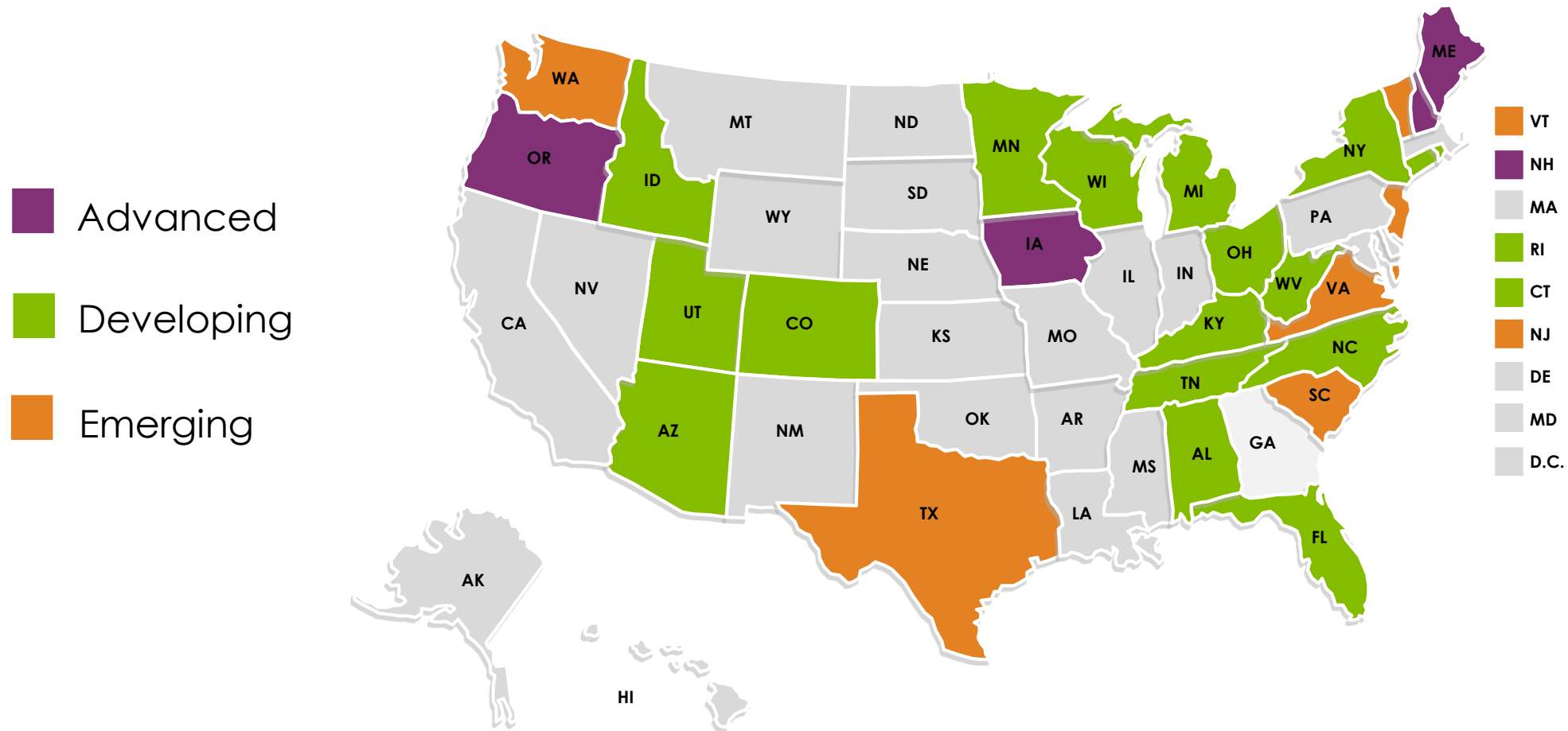
2 | PBL can produce measures of proficiency other than grades

How does PBL work in other States?

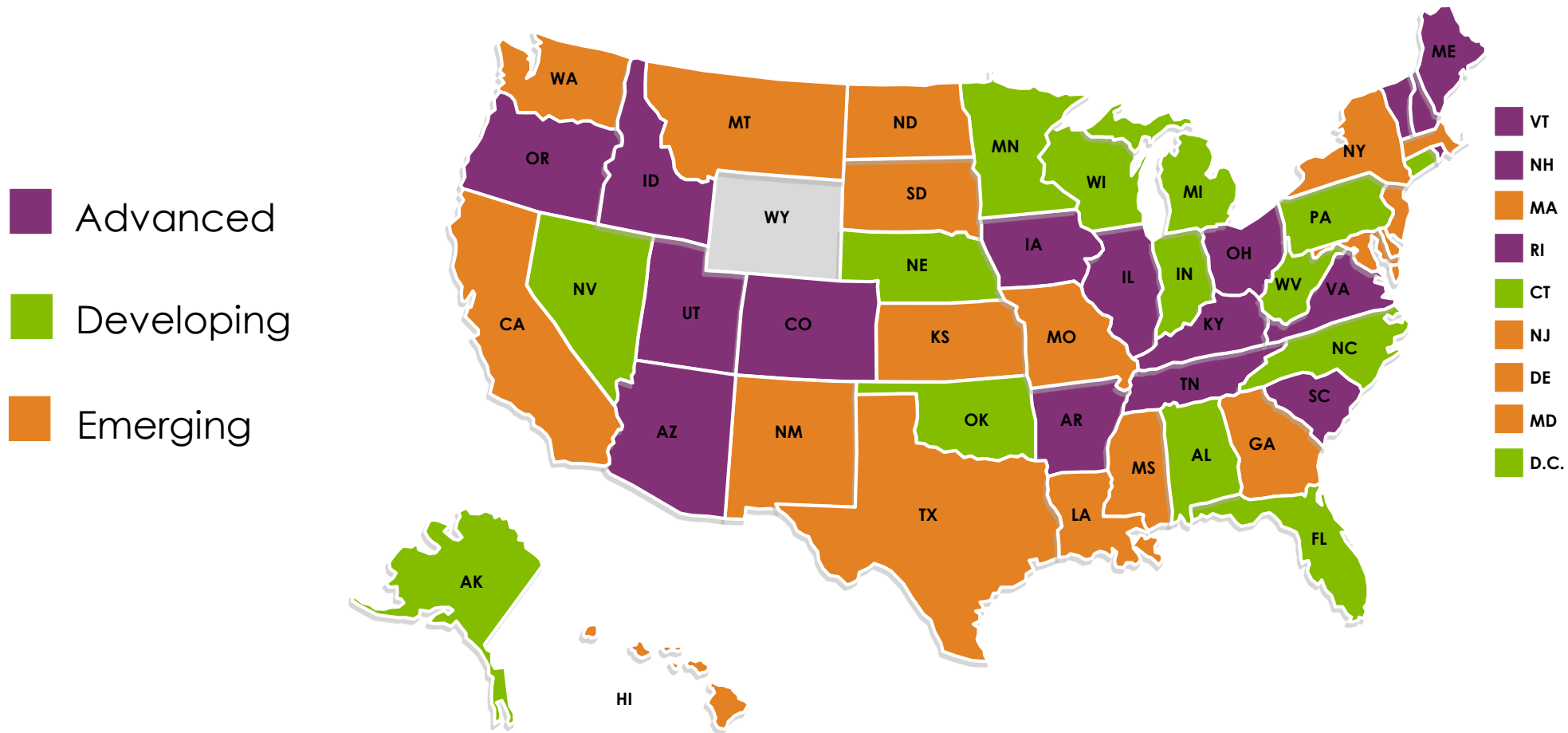
PBL is gaining ground across the country



Limited adoption in 2012



Strong growth by 2019



Illinois



Competency-based education pilot

Pilot schools explore PBL,
and other schools can
learn from them

Colorado



Exploring local approaches

Districts explore PBL on their own, with support from Department of Education

New Hampshire



Performance Assessment

Pilot uses personalized local assessments to measure students performance on authentic tasks

How is PBL incorporated into transcripts?

Clarity is critical



How is PBL incorporated into transcripts?

1 | Transcripts can balance traditional & non-traditional measures

East High School
Official Transcript
123 Mountain Road, Dead River, Maine 04000
Phone: (207) 555-1234 Website: www.easthighschool.edu

Learning Experience	
2009-2010	
English 9	3.5
History 9	3.0
Geometry	3.5
Spanish I	3.0
Earth Science	3.0
Art I	3.0
2010-2011	
English 10	3.5
History 10	4.0
Algebra II	4.0
Spanish II	3.5
Chemistry	4.0
Drama	4.0
2011-2012	
English Language and Composition (AP)	3.5
US History	3.0
Calculus	3.5
Spanish III	3.5
Physics	3.5
Software Development, Inc.	3.5
2012-2013	
English 10I	4.0
Mountain Biotech Industries (STEM)	3.5
Physical Education	4.0
Statistics (AP)	3.8
Health	4.0
Psychology (AP)	4.0

Graduation Standards: Cross-Curricular Skills

Maine Learning Results	Guiding Principles	Prerequisite
Clear and effective communicator		Prerequisite
Self-directed and lifelong learner		3.0
Creative and innovative thinker		

*The achievement of graduation standards is verified over time as students demonstrate proficiency through multiple assessments, projects, portfolios, and other evidence.

How is PBL
incorporated into
transcripts?

**2 | Experts say too much information can be
overwhelming**

How is PBL incorporated into transcripts?

**3 | Some schools adopt PBL but still retain
traditional grading practices**

How is PBL used for college admissions?



Colleges may embrace aspects of PBL, but transparency is key

How is PBL used for college admissions?

Some admissions leaders want explanations of PBL transcripts or conversions to GPA

What are the effects of implementation?

Implications for assessment, timely completion, educator support & stakeholder engagement

What are the effects of implementation?

1 | Assessments need to be valid and comparable, or PBL can worsen inequity

What are the effects of implementation?

2 | If some students advance at a very slow pace, they may fall behind

What are the effects of implementation?

3 | Without good materials, lessons & evaluation strategies, educators struggle

What are the effects of implementation?

4 | Engaging postsecondary partners early can align PBL with college expectations

What are the effects of implementation?

5 | Career/technical education policies can have important lessons to share

What are the effects of implementation?

6 | Engaging key stakeholders early can head off confusion and resistance

What are the effects of implementation?

7 | Learning from Maine

Questions?



Matt Jordan
mjordan@ecs.org