



STATE OF VERMONT
OFFICE OF LEGISLATIVE COUNCIL

Witness Information

Handouts

Please make sure to put a title, date, and your name on the top of each document submitted for testimony.

Electronic copies of handouts must be emailed to Phil Petty, ppetty@leg.state.vt.us, at least 24 hours before your scheduled time. In addition, please also bring one hard copy of your handout.

If you want copies made at the State House, there is a charge of \$.10 per printed side. State employees can use transfer numbers to pay for copies made at the State House. Any document you hand out to the committees is by law available to the public.

ATTENTION - With few exceptions, any document a witness submits to a committee or to a committee assistant is open to the public.

In addition, a witness's submission of a document authored by the witness or his or her organization constitutes consent to its posting on the committee's webpage unless the witness specifically requests that the document not be posted. Although the committee will honor requests not to post such documents on its webpage, once a witness submits a document to the committee, it is a public record and will be subject to public inspection and copying unless exempt under the Public Records Act.

The committee's information page is available at this url:
<https://legislature.vermont.gov/committee/detail/2020/17>

The agendas for committees are updated continually. You can check all agendas at:
<https://legislature.vermont.gov/committee/meetings/2020>

Equipment

If you require any special equipment or resources for your testimony, please notify the committee assistant as early as possible so that arrangements can be made.

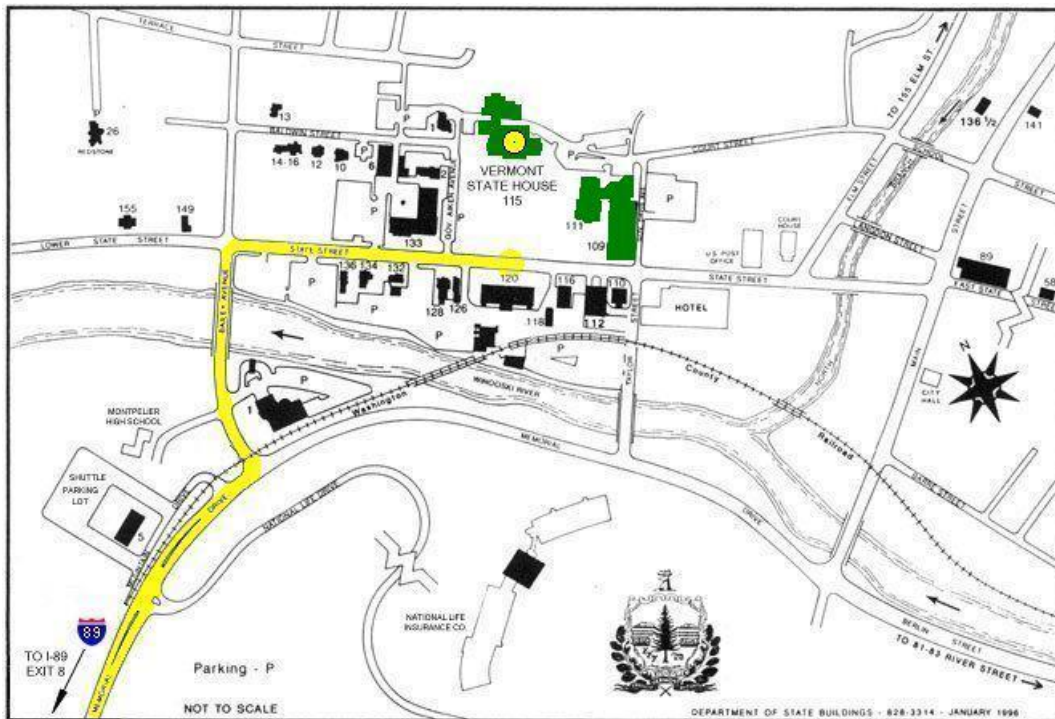
Phone testimony

If you have been approved to testify by phone, please provide the committee assistant with a working phone number at least 24 hours before your scheduled testimony time. The committee assistant will test this phone number to ensure connectivity. The committee will call you when ready.

Driving Directions
115 State Street
Montpelier, VT 05641

From I-89:

- 1: Take EXIT 8 toward US-2/Montpelier/ VT-12/St. Johnsbury 0.5 miles
 - 2: Merge onto Memorial Dr. 0.7 miles
 - 3: Turn LEFT onto US-2/Bailey Ave. 0.1 miles
 - 4: Turn RIGHT onto State Street/US-2 BR/Theodore Roosevelt Hwy. 0.2 miles
- Vermont State House, 115 State Street (on left) 0.2 miles

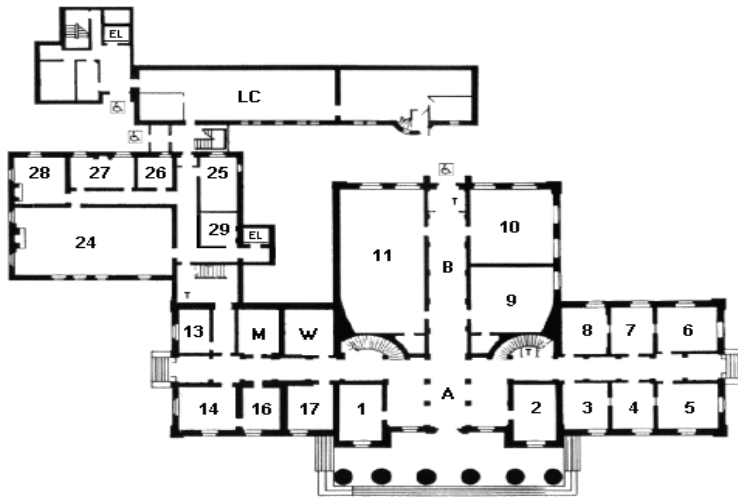


Parking is challenging during the legislative session. You can park on Montpelier streets for up to 2 hours at parking spaces that require quarters, dimes, nickels, or a credit or debit card. There is a shuttle that runs from the parking lot shown in the lower left-hand corner of the map above and also from National Life. The shuttle is free; schedules for the two routes are available online:

<https://bgs.vermont.gov/sites/bgs/files/Capital%20Shuttle%20Schedule%202018.pdf>


House Corrections and Institutions is in Room 33, second floor.

Floor 1 (Entrance Floor)

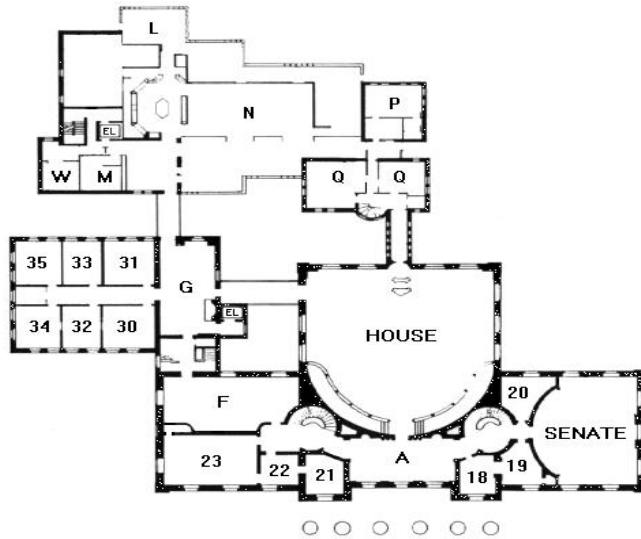


ROOM

KEY

1	Senate Committee on Judiciary Committee
2	Sergeant at Arms
3	Senate Committee on Transportation
4	Senate Committee on Government Operations
5	Senate Committee on Appropriations
6	Senate Committee on Finance
7	Senate Committee on Institutions
8	Senate Committee on Natural Resources and Energy
9	Coatroom
10	Small Hearing Room
11	Large Hearing Room
13	President Pro Tempore of the Senate
14	Lt. Governor (President of the Senate)
16	Lt. Governor's Staff
17	Senate Committee on Health and Welfare
24	Legislative Lounge (Old Supreme Court Chamber)
25	Copy Center
26	Senate Committee on Agriculture
27	Senate Committee on Economic Development, Housing and General Affairs
28	Senate Committee on Education
29	Capitol Police
A	Lobby
B	Hall of Inscriptions (Lincoln Statue)
LC	Legislative Council
T	Public Telephones
M & W	Rest Rooms
EL	Elevator
	Accessible Entrances

Floor 2



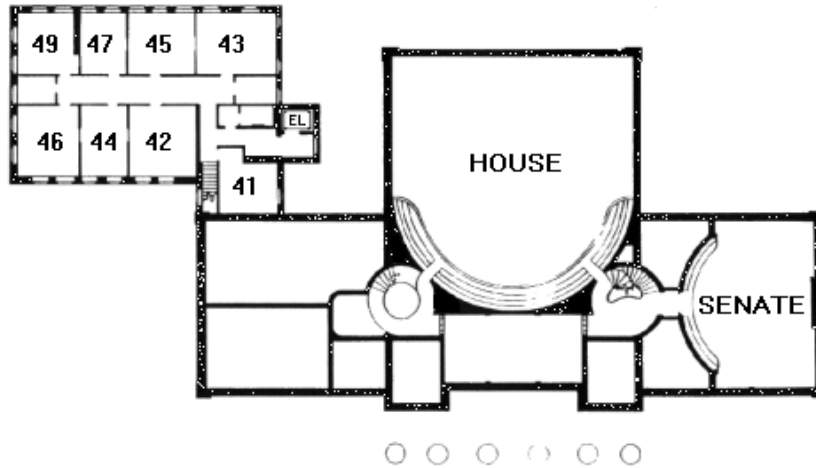
ROOM

House
Senate
18
19
20
21
22
23
30
31
32
33
34
35
A
F
L
N
P
Q
T
M & W
EL

KEY

House Chamber
Senate Chamber
Secretary of the Senate
Secretary of the Senate
Senate Coatroom
Governor's Staff
Governor's Staff
Governor's Office
House Committee on Judiciary
House Committee on Education
House Committee on Agriculture
House Committee on Corrections and Institutions
House Ways and Means Committee
House Committee on Commerce and Economic Development
House Vestibule (Hall of the Flags)
Cedar Creek Room
Ethan Allen Room
State House Food Court (Abbey Group)
Speaker of the House
Clerk of the House
Public Telephones
Rest Rooms
Elevator

Floor 3



ROOM

41
42
43
44
45
46
47
49
HOUSE
SENATE
EL

KEY

House Committee on Energy and Technology
House Committee on Appropriations
House Committee on Transportation
House Committee on General, Housing, and Military Affairs
House Committee on Health Care
House Committee on Human Services
House Committee on Natural Resources, Fish, and Wildlife
House Committee on Government Operations
House Chamber Balcony
Senate Chamber Balcony
Elevator

There is a coat room near the Sergeant at Arms' Office in the center of the main floor. You can store outerwear there.

Occasionally, we must cancel hearings. We will attempt to notify you as soon as we hear of cancellations or postponements.

If the weather is bad, you may be able to testify by phone rather than chance dangerous driving conditions, please check with the person listed below.

If you have further questions, please contact Phil Petty at ppetty@leg.state.vt.us or (802) 828-2259