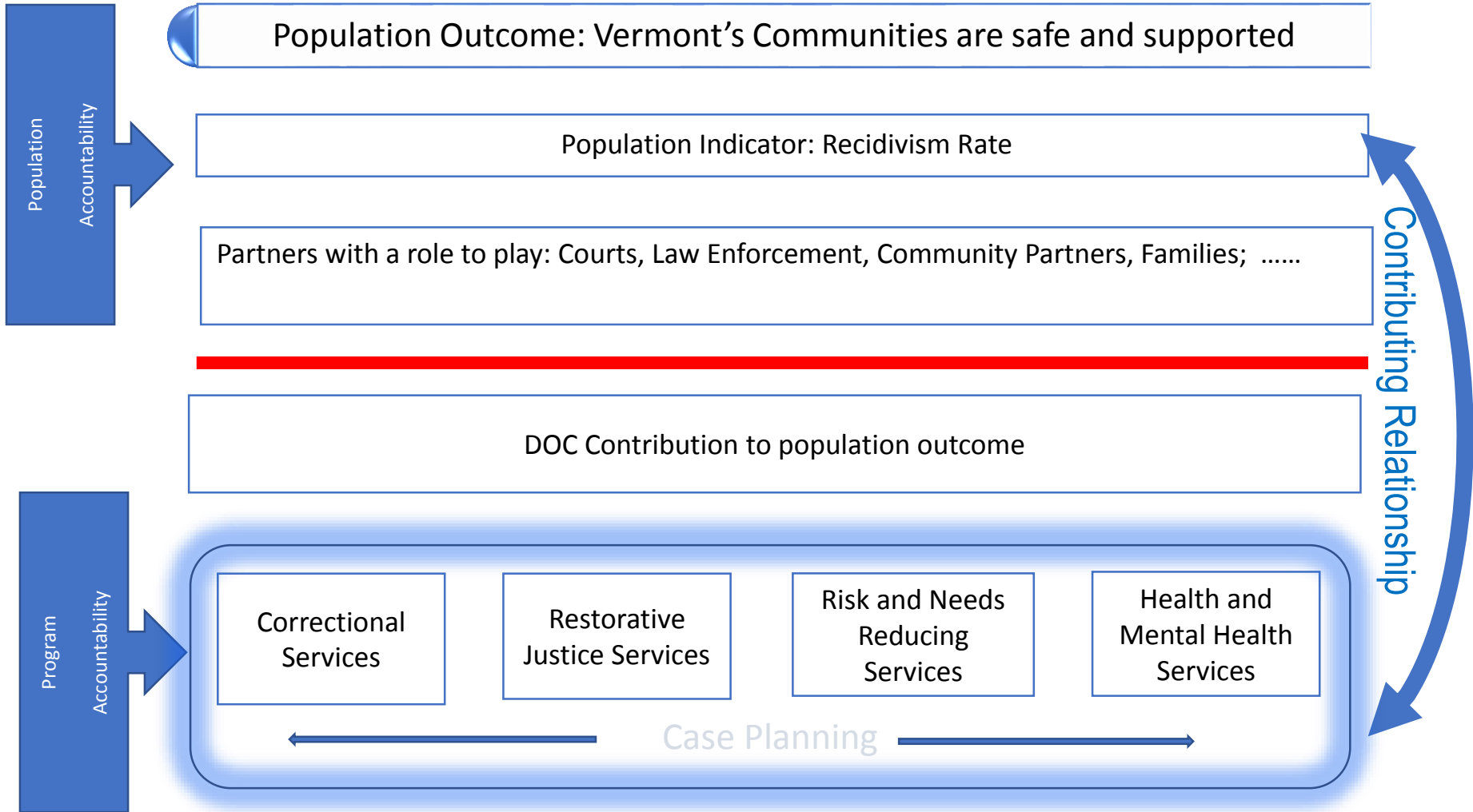


The logo features a large green oval with a white crescent shape on its left side. The background is white with several thin, light gray curved lines and dashed lines radiating from the center.

Vermont Department of Corrections

Overview
January 2019



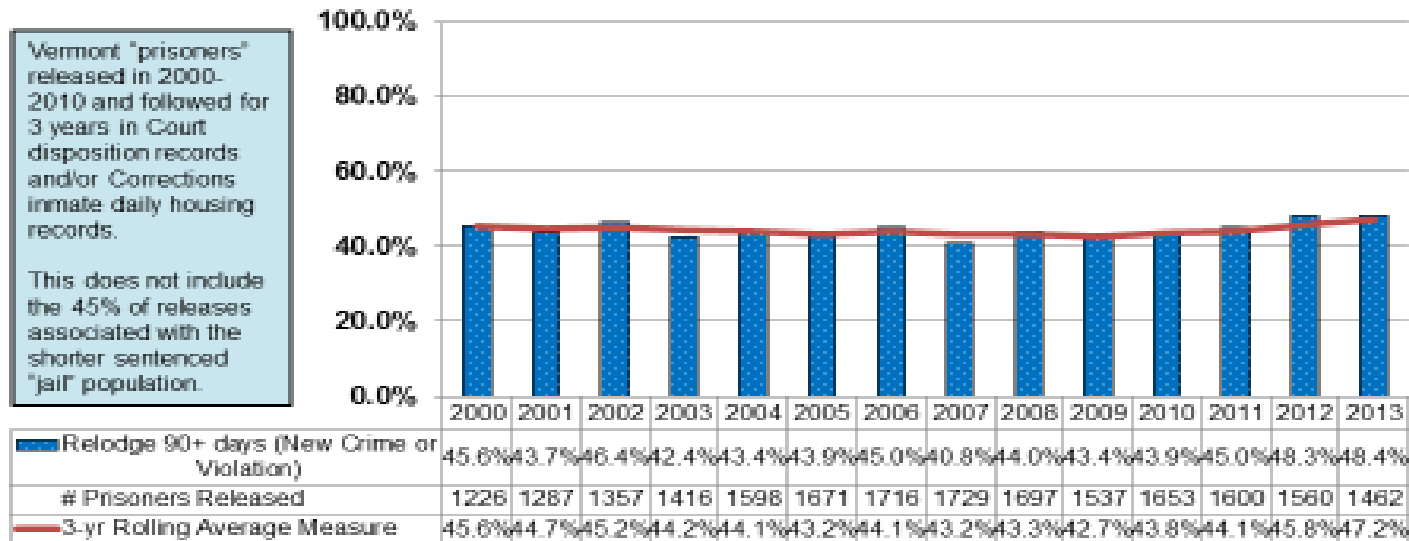
How are we doing?

Population Level Indicator

Indicator: Recidivism Rate

Prisoner Relodging - Statutory Measure

Relodging of Prisoners for 90+ Days for New Crime and/or Violation



Note: Definition for prisoner is a person sentenced to serve (maximum) more than one year (US Department of Justice, Bureau of Justice Statistics).

Citation- 2011 Act 41 Section 5: "The Department shall calculate the rate of recidivism based upon offenders who are sentenced to more than one year of incarceration who, after release from incarceration, return to prison within three years for a conviction for a new offense or a violation of supervision resulting, and the new incarceration sentence or time served on the violation is at least 90 days."

General Overview

Mission Statement: In partnership with the community, we support safe communities by providing leadership in crime prevention, repairing the harm done, addressing the needs of crime victims, ensuring accountability for criminal acts, and managing the risk posed by offenders.

- 6 correctional facilities
- 12 Probation and Parole offices
- 1003 employees
 - 464 correctional officers (COI, COII)

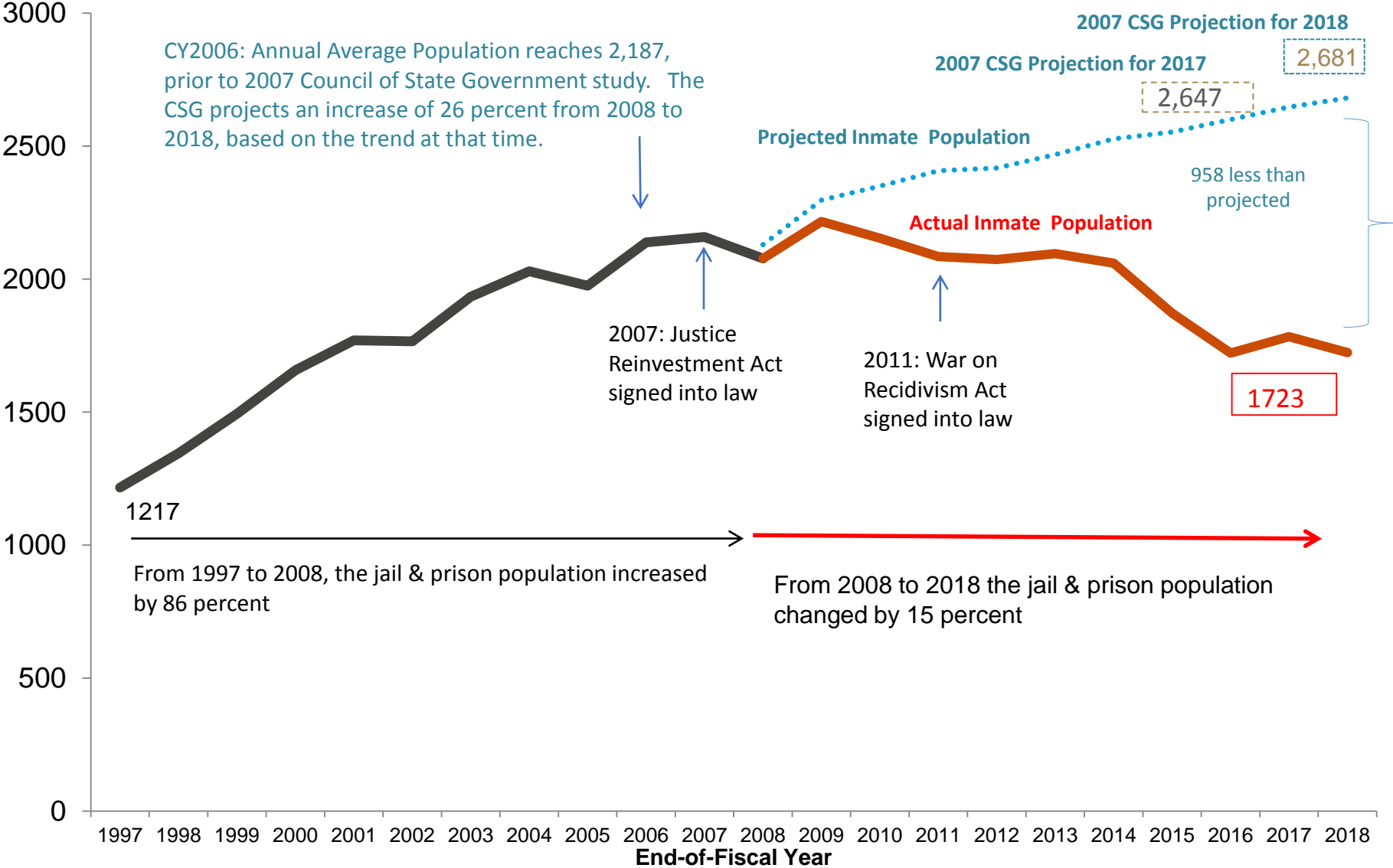
Program : *Correctional Services*

Current Measures: How Much

Counts based on June 30th Sample for each year

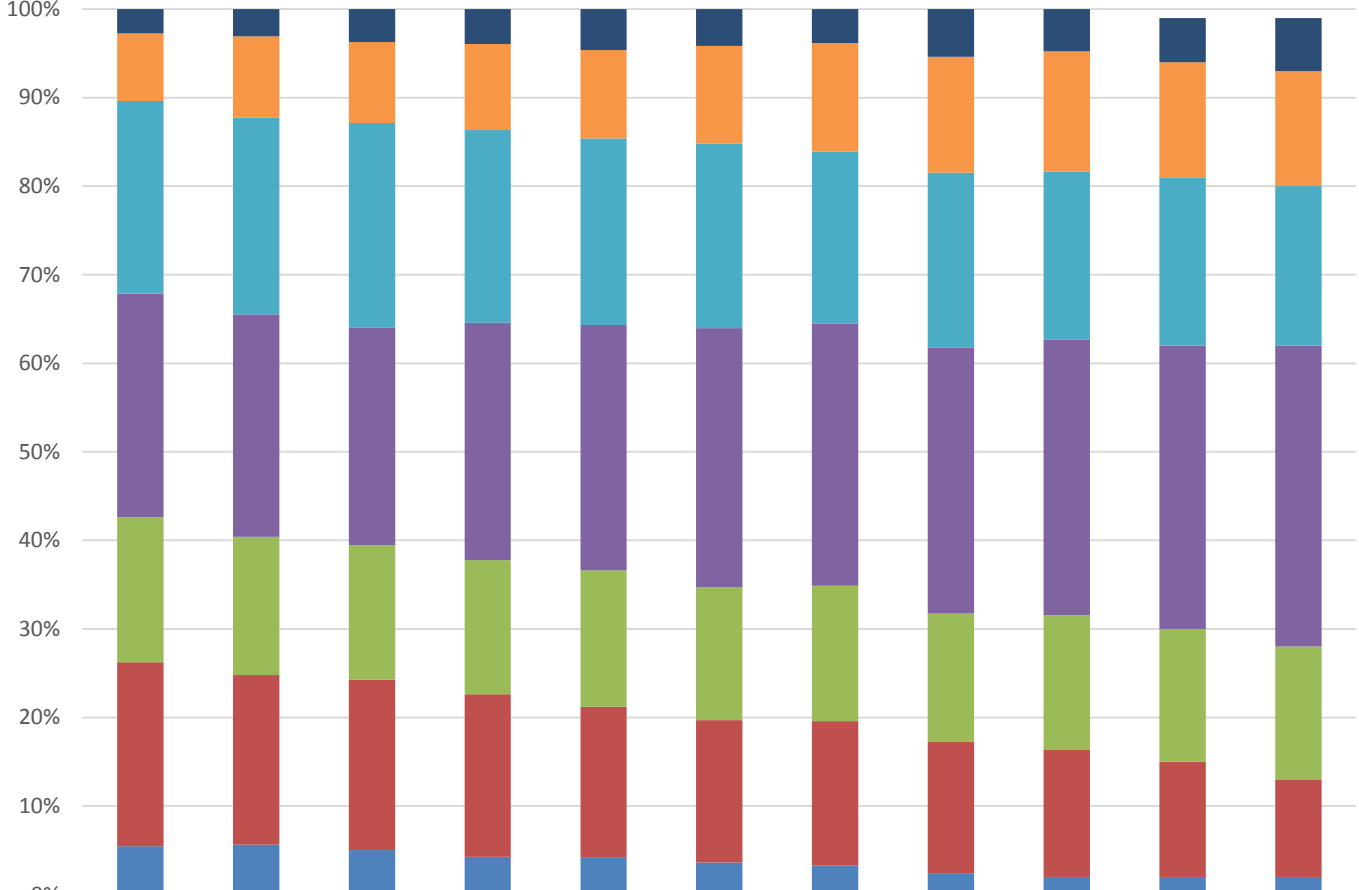
Measure	FY2008	FY2017	FY2018	% Change Past Decade	% Change Past Year
Persons Seen	11,708	9,626	8,724	-25.5%	-9.4%
Incarceration	2,082	1,784	1,723	-17.2%	-3.4%
Reentry	996	983	855	-14.2%	-13.0%
Intermediate Sanctions	718	782	736	2.5%	-5.9%
Parole	1,049	947	840	-19.9%	-11.3%
Probation	6,863	5,133	4,570	-33.4%	-11.0%
Housed under OOS	529	269	211	-60.1%	-21.6%

Vermont Inmate Population



All years are census counts from June 30th at end of each fiscal year.

Incarcerated Inmate Age Trends



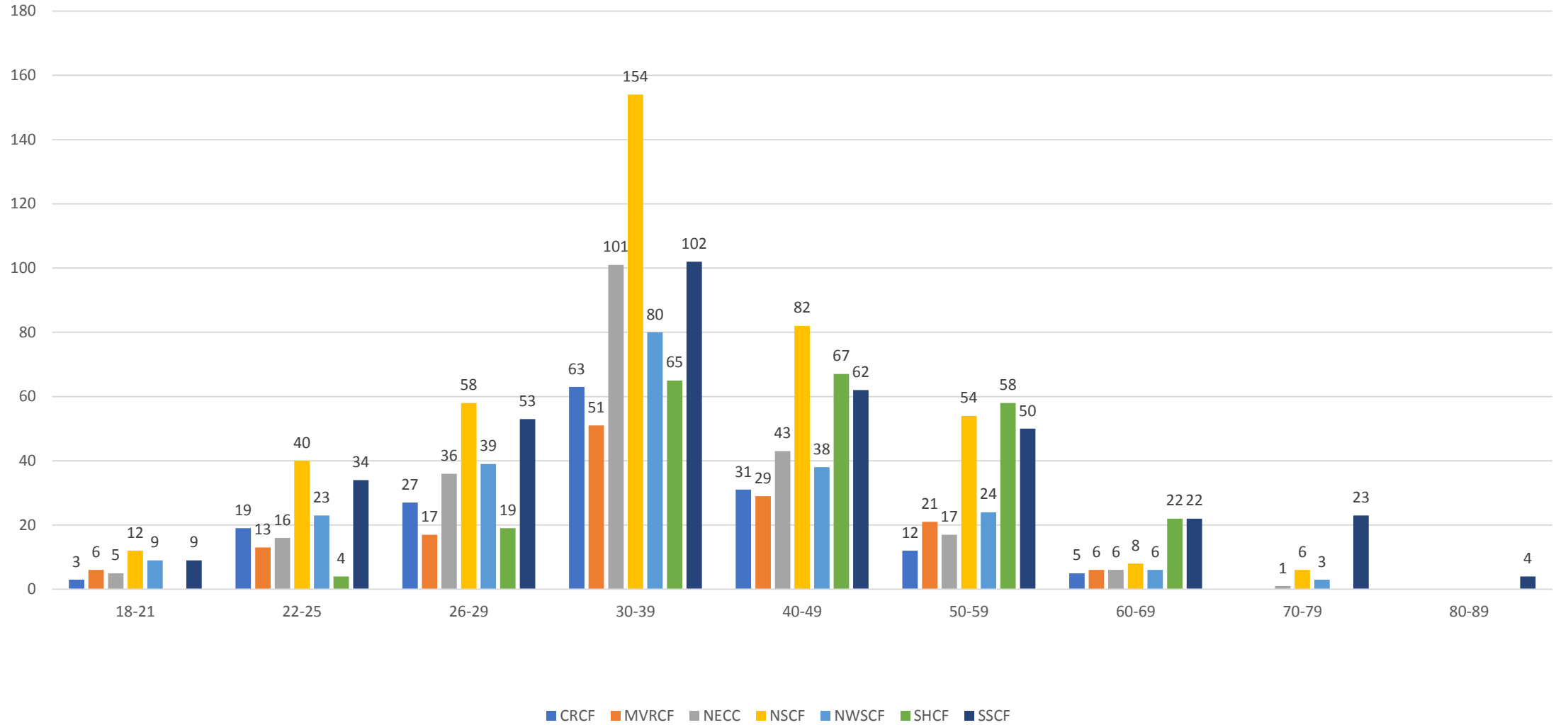
	2008	2009	2010	2011	2012	2013	2014	2015	2016	2017	2018
60+	3%	3%	4%	4%	5%	4%	4%	5%	5%	5%	6%
50-59	8%	9%	9%	10%	10%	11%	12%	13%	14%	13%	13%
40-49	22%	22%	23%	22%	21%	21%	19%	20%	19%	19%	18%
30-39	25%	25%	25%	27%	28%	29%	30%	30%	31%	32%	34%
26-29	16%	16%	15%	15%	15%	15%	15%	14%	15%	15%	15%
21-25	21%	19%	19%	18%	17%	16%	16%	15%	14%	13%	11%
16-20	5%	6%	5%	4%	4%	4%	3%	2%	2%	2%	2%

■ 16-20
 ■ 21-25
 ■ 26-29
 ■ 30-39
 ■ 40-49
 ■ 50-59
 ■ 60+

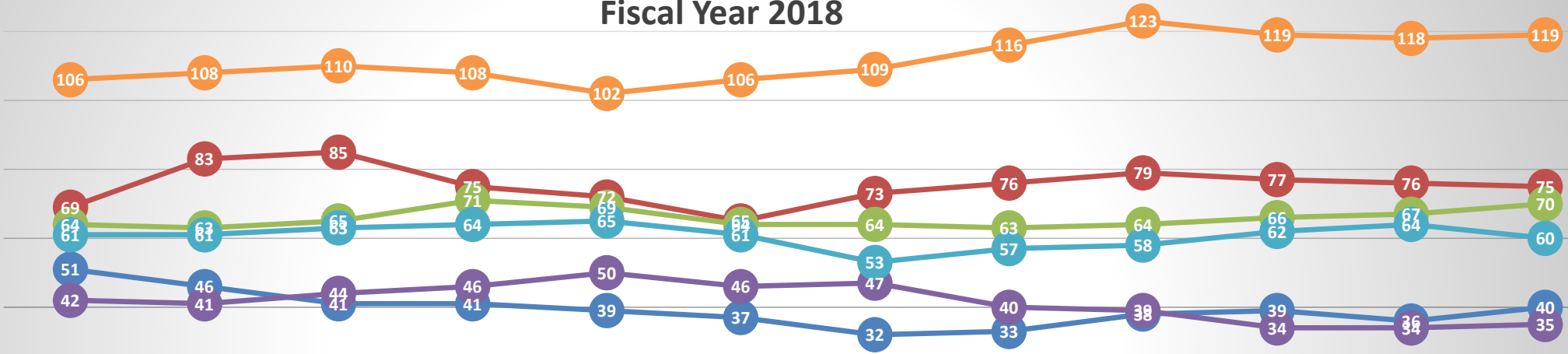
Point in time: June 30th count

Age Group by Facility

Point in Time 1/17/19



Detention by Location Average per Month Fiscal Year 2018

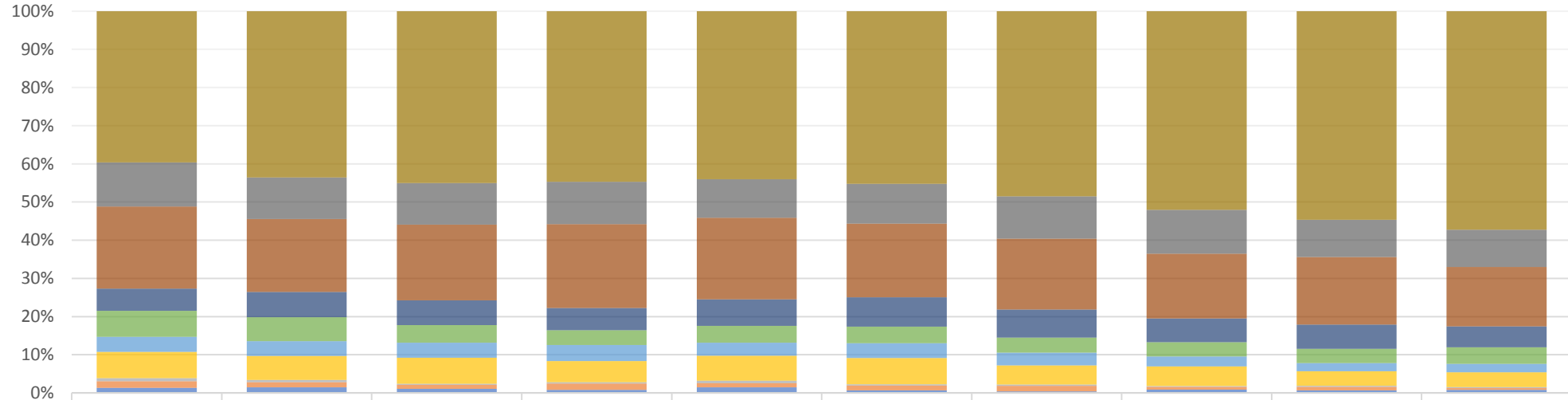


	JUL-17	AUG-17	SEP-17	OCT-17	NOV-17	DEC-17	JAN-18	FEB-18	MAR-18	APR-18	MAY-18	JUN-18
● CRCF	51	46	41	41	39	37	32	33	38	39	36	40
● MVRFC	69	83	85	75	72	65	73	76	79	77	76	75
● NECC	64	63	65	71	69	64	64	63	64	66	67	70
● NSCF	42	41	44	46	50	46	47	40	39	34	34	35
● NWSCF	61	61	63	64	65	61	53	57	58	62	64	60
● SSCF	106	108	110	108	102	106	109	116	123	119	118	119

● CRCF
 ● MVRFC
 ● NECC
 ● NSCF
 ● NWSCF
 ● SSCF

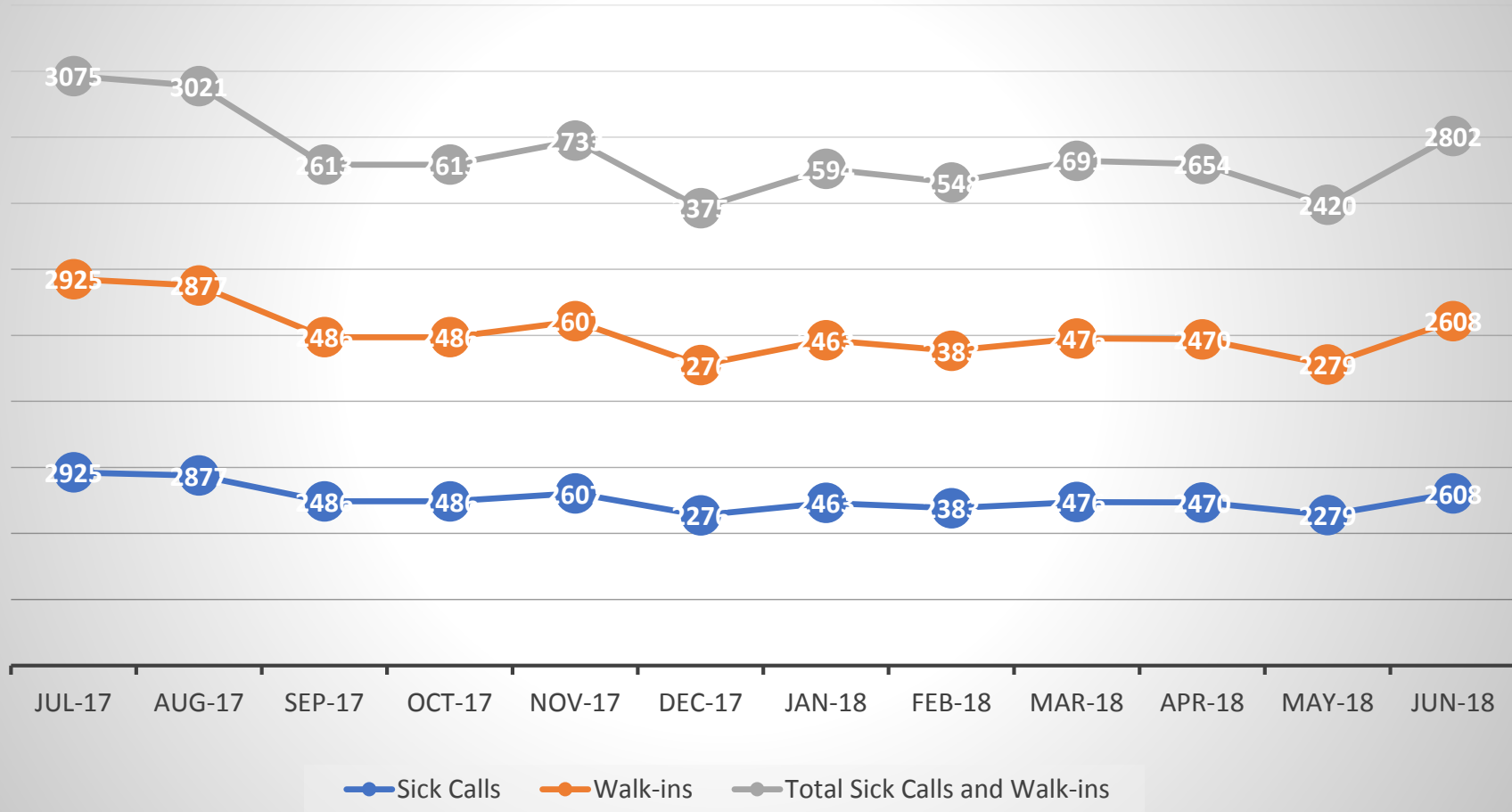
Incarcerated Population by Crime Type

June 30th Counts



	2009	2010	2011	2012	2013	2014	2015	2016	2017	2018
Fel. Serious	854	925	919	911	900	913	891	856	932	945
Fel. Person	249	231	222	226	207	210	204	188	166	161
Fel. Property	463	405	404	449	436	389	342	279	302	256
Fel. Drug	125	140	132	118	143	155	135	102	108	91
Fel. Motor Veh.	146	133	94	79	90	88	72	62	64	71
Fel. Other	85	83	81	86	70	78	61	43	36	37
Misd. Person	149	132	139	112	133	139	92	84	65	64
Misd. Drug	16	13	5	8	14	7	7	3	4	4
Mis. Motor Veh.	38	29	22	34	22	25	26	13	16	8
Misd. Other	29	31	22	16	30	14	8	14	12	13

Health Services: Sicks Calls



Position	CRCF	MVRCF	NECC	NSCF	NWSCF	SSCF	Total
Administrative Assistant A	1		1	2	1		5
Administrative Assistant B	1	1		3		4	9
Administrative Srvc Cord I	1	1	1		1		4
Administrative Srvc Cord IV			1	1		1	3
Administrative Srvc Mngr I	1	1			1		3
Correctional Facility Sup		1					1
Correc Servs Spec I	4		1	4	3	3	15
Correctional Officer AC:Admin			1	1		1	3
Correctional Officer I	65	39	52	70	65	89	380
Correctional Officer II	19	14	20	22	26	24	125
Corrections Assistant Superint	1	1	2	2	2	2	10
Corrections Living Unit Super	1	1	1	2	2	1	8
Corrections Services Spec II	2	3	4	7	5	7	28
Correctnl Facility Shift Super	7	6	7	6	7	8	41
Correctnl Security&Oper Sup	1	1	1	1	1	1	6
CorrFacility Superintendent II	1		1	1	1	1	5
Facility Food Serv Supervisor	1	1	1	1	2	2	8
Facility Work Crew Leader			5				5
Financial Administrator I					1		1
Recreation Servs Coord	1	1		1	1	1	5
Volunteer Services Coordinator	2	1	1	1	1	1	7
Work Crew Foreman Supervisor			1				1
Total	109	72	101	125	120	146	673