

The background of the image consists of numerous rectangular wooden planks stacked together, creating a textured, grid-like pattern. The wood has a natural, light brown color with visible grain patterns and some darker spots. Overlaid on this background is the text "Accessing carbon markets for landscape conservation in Vermont" in a white, sans-serif font. A thin white vertical line is positioned to the left of the text, starting from the top of the first line and extending down to the bottom of the last line.

Accessing carbon
markets for
landscape
conservation in
Vermont



To ensure that current and future generations are deeply connected to the land and benefit from its deliberate protection and responsible stewardship.

- ❖ 42 years of land conservation
- ❖ 10% of Vermont
- ❖ Innovator, strong partnerships

Supporting Vermont's Agricultural Heritage:

115k acres across 900 farms,
1k landowners

Protecting Vermont's Forests:

420k acres, 1,400 landowners

Connecting People to Land:

10k acres community land, 400 places with public access

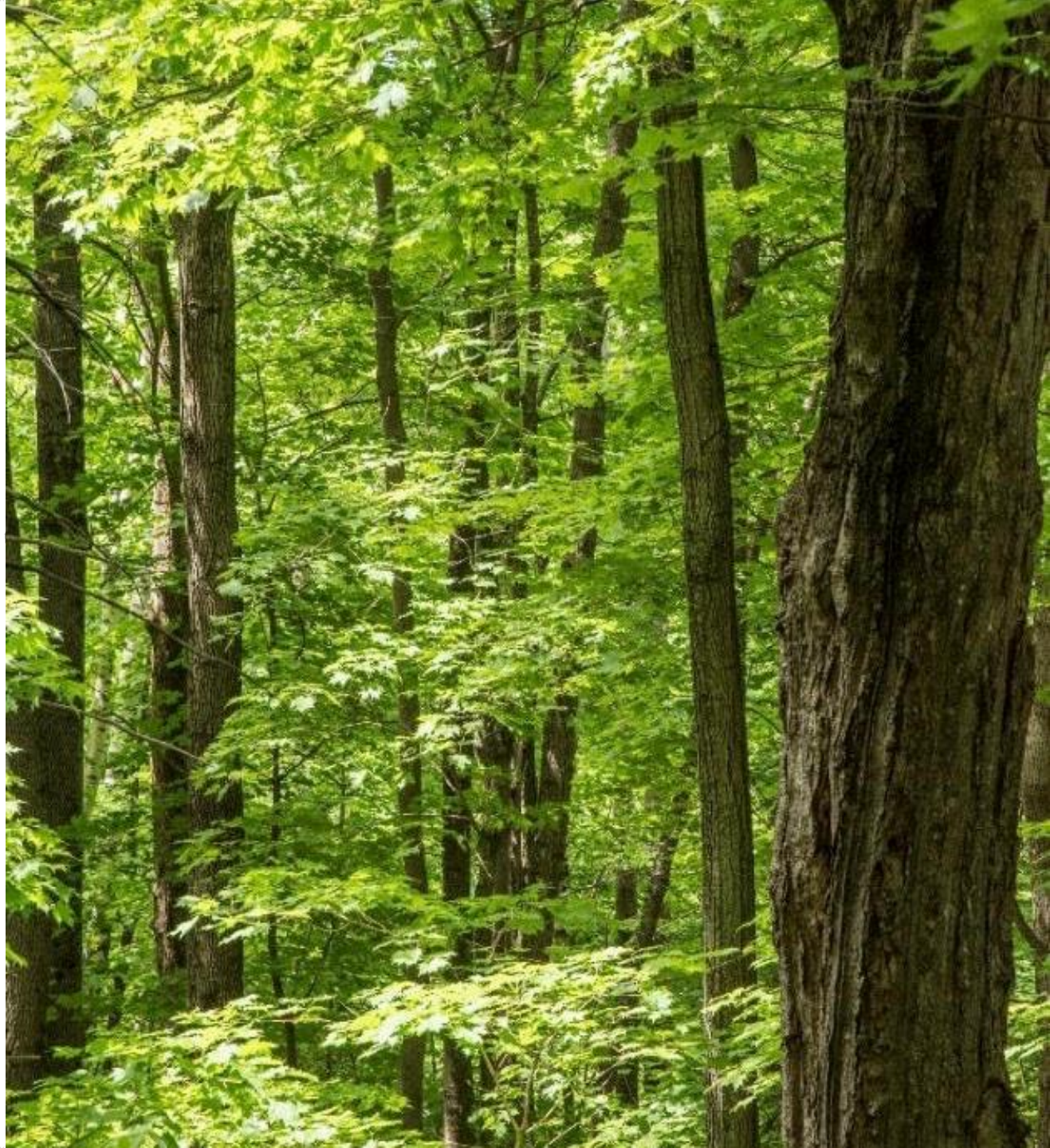


Vermont's communities and working landscape will be vital, resilient, and connected.



The Forest Landscape

- 75% + of Vermont is in forest cover (4.5 Million acres), approximately 80% privately owned.
- 10% of the privately held land is conserved.
- Many forest parcels remain outside the framework of protection created by state ownership, conservation, and current use.
- We face increasing fragmentation and parcelization (subdivision) leading to the diminishment of a range of ecosystem services.



The Carbon Opportunity in Vermont



\$45 Million- \$90 Million per year in sequestered carbon.



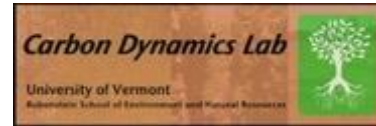
Carbon sequestration from forest growth *exceeds* carbon emissions from transportation.



Carbon has an intrinsic value to many Vermonters who care about and see the impacts of climate change.



Correlates well other values that matter for the future of Vermont.



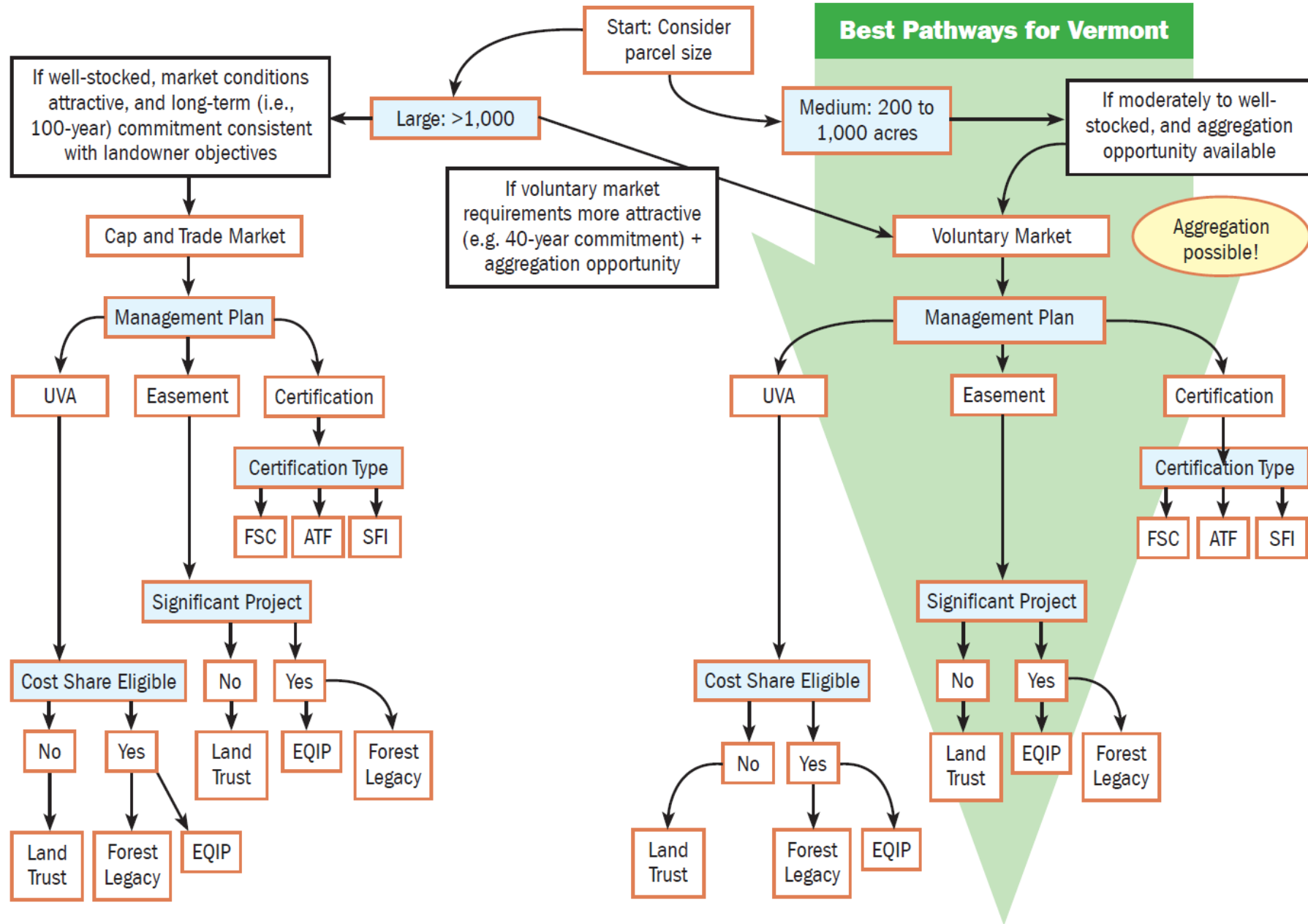
Our Team



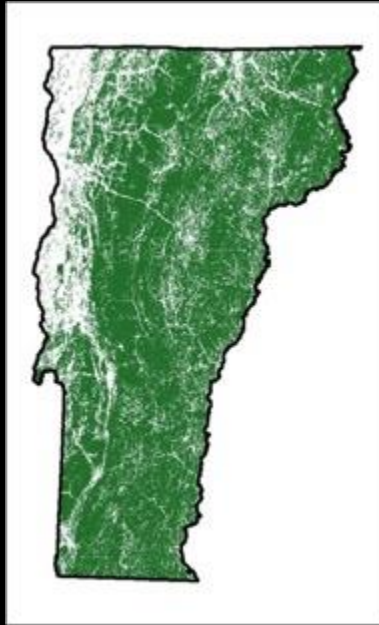


Phase I

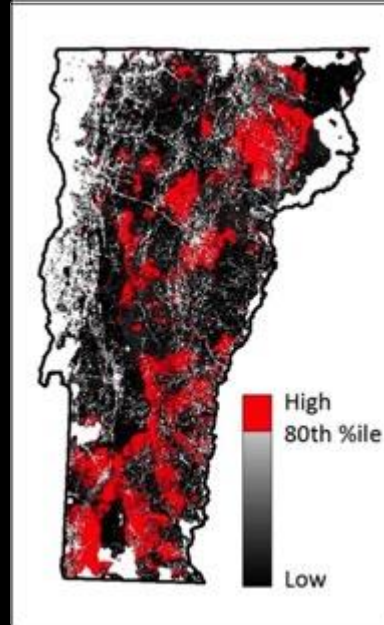
Decision Tree for Integrated Forest Conservation, Stewardship Program Enrollment, and Carbon Project Development in Vermont



Co-benefit identification



Forest area



Σ FLOOD

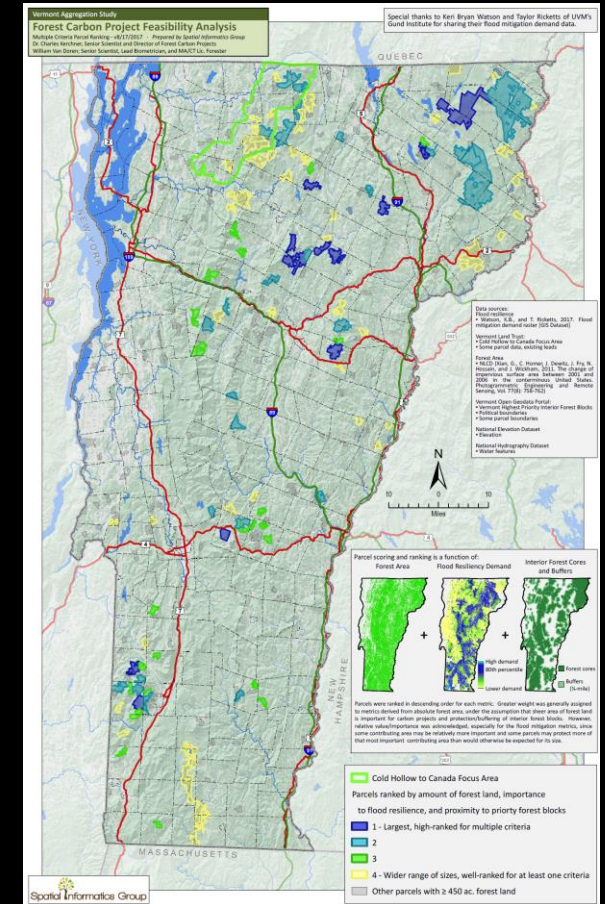
+ Σ FLOOD_{RESID}

Σ FLOOD₈₀



Interior forest
cores

Buffers



= 285,00 acres

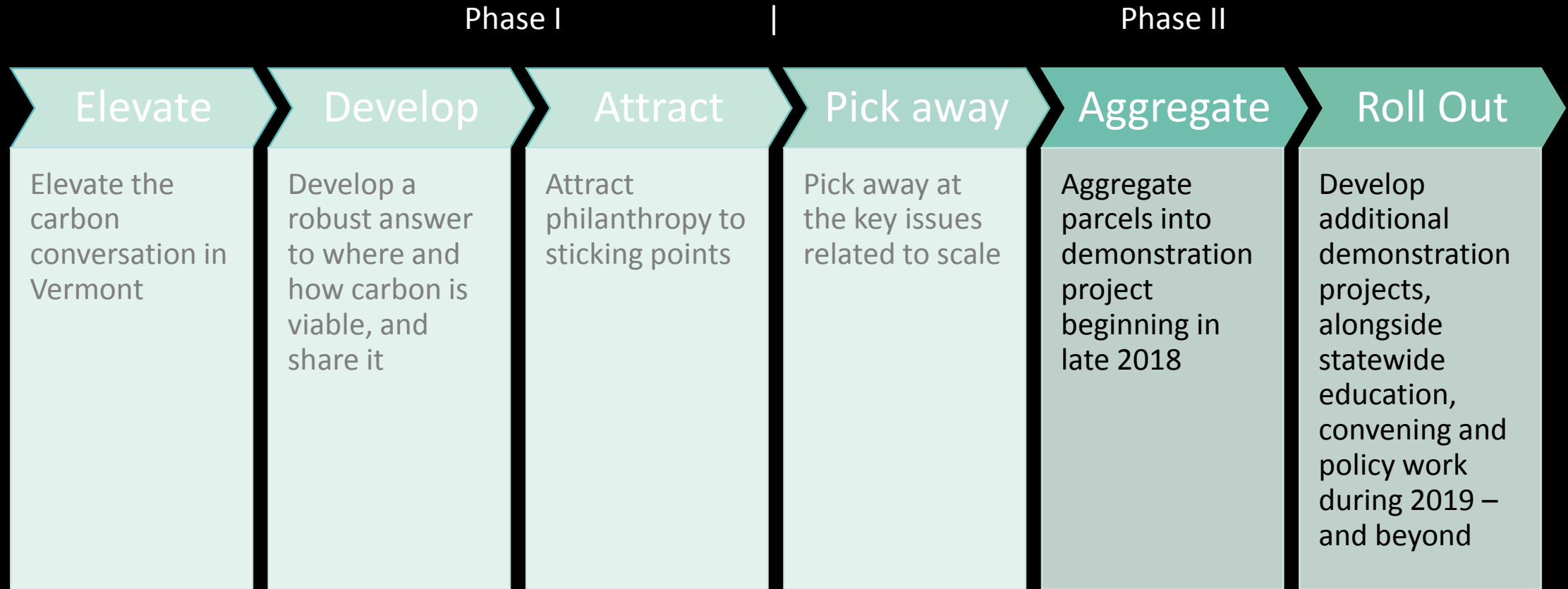
Flood mitigation demand data credit:

Watson, K.B., and T. Ricketts, 2017. Flood mitigation demand raster [GIS Dataset]

A scenic landscape featuring a range of mountains in the background, partially obscured by a layer of clouds. The middle ground is dominated by a dense forest of trees with vibrant autumn foliage in shades of green, yellow, orange, and red. The foreground consists of a grassy field with some reeds or tall grasses. The overall atmosphere is serene and natural.

Phase Two

Overall Approach



Developing a replicable governance model

(Where we are now)

- Cold Hollow Carbon, LLC
 - Landowner owned, manager-managed
 - **14** landowners on board
 - **7978** acres represented
- Sharing term sheets with Landowners
 - VLT providing technical (forestry), legal & tax guidance
- Development partnership between VLT, TNC & SIG
- Inventory spring 2019
- Premarketing offsets now, working toward fall 2019 sale



Additional Elements of Phase II

Dissemination, Training, and Referrals

1. For landowners (2 workshops, 2 planned)
2. For county and consulting foresters (1 workshop, 2 planned)
3. For partners, public & stakeholders (8 so far)

Preliminary Policy Recommendations (State, Regional):

1. RGGI
2. Current Use Value Appraisal
3. Governor's Initiatives on Climate Change
4. Linkages to fragmentation/Act 250/land conservation legislation



Questions?