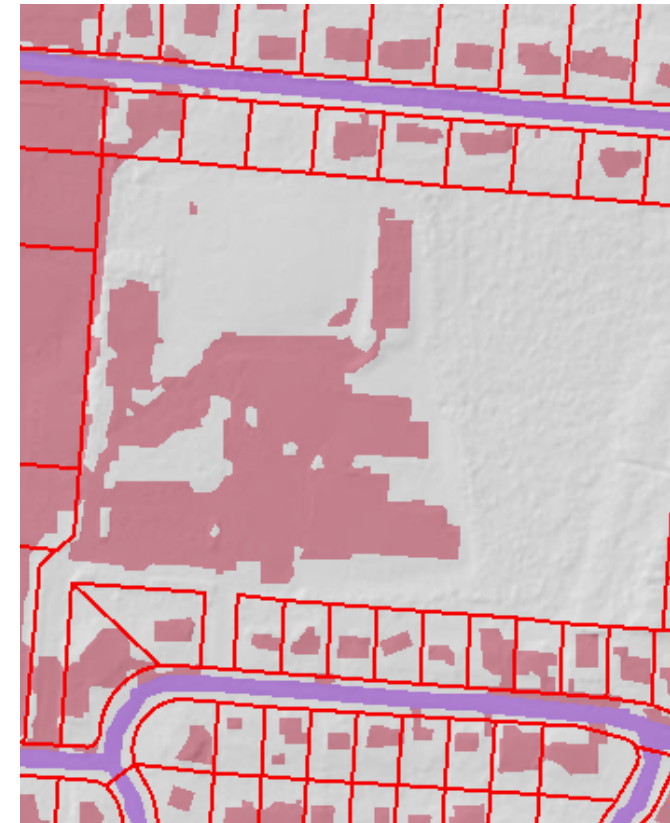


# Data Needs Related to Impervious Surface / Parcel Fees

HOUSE COMMITTEE ON WAYS AND MEANS

APRIL 17, 2018

JOHN E. ADAMS



# Parcel Based Stormwater Fees

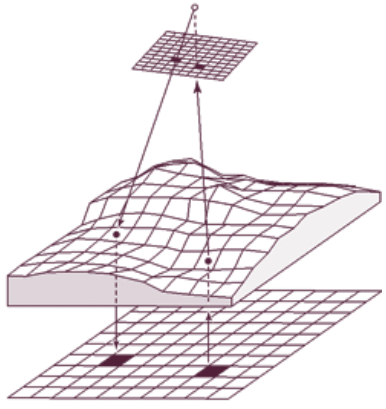
## Types of Parcel Fees [\(see Treasurers 2017 Clean Water Report\)](#)

- Flat Fee
- Based on Parcel Acreage
- Based on Parcel Use
- Based on Use and Acreage
- Based on Amount of Impervious Surface

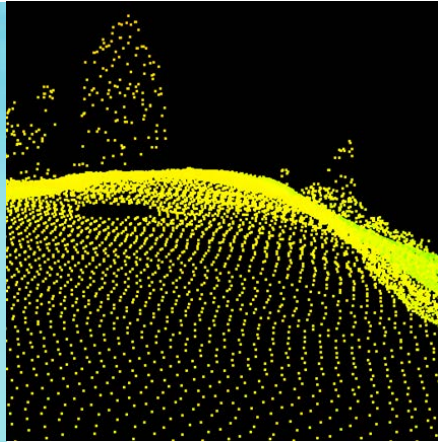
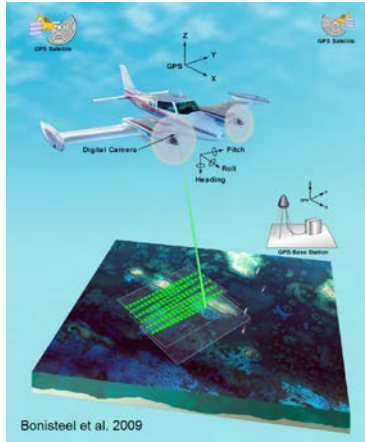
# Parcel Based Stormwater Fees

## Options for Administering Parcel or Impervious Surface Fee [\(see Act 73 Report\)](#)

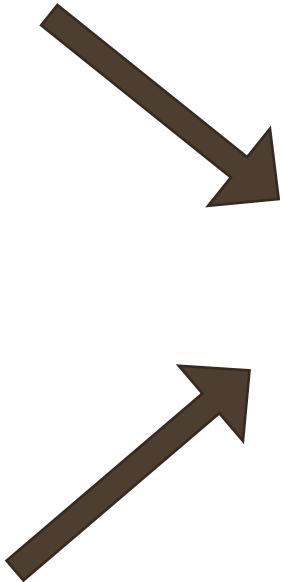
- Local administration
- State administration
- Parallel administration
- Local, Regional, Agricultural or Statewide Utility System



**ORTHOIMAGERY**

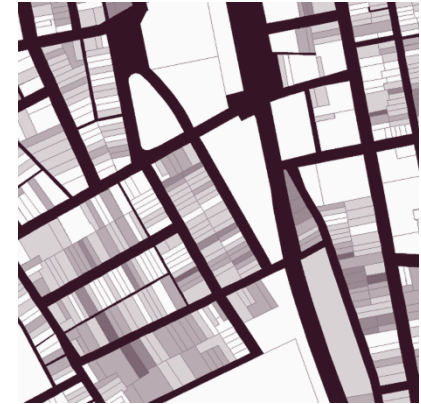


**LIDAR**



Courtesy UVM SAL

**IMPERVIOUS SURFACE  
(End of 2018)**



**STATEWIDE  
PARCEL DATA  
(End of 2019)**

Data needs for an impervious surface stormwater fee

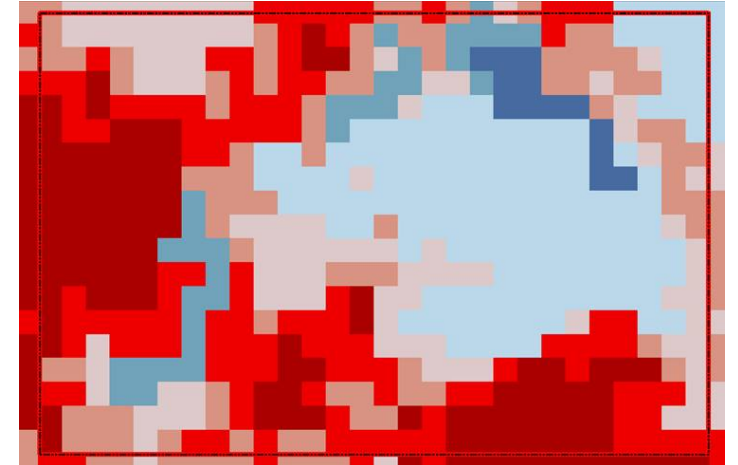


# Land Cover / Impervious Surface

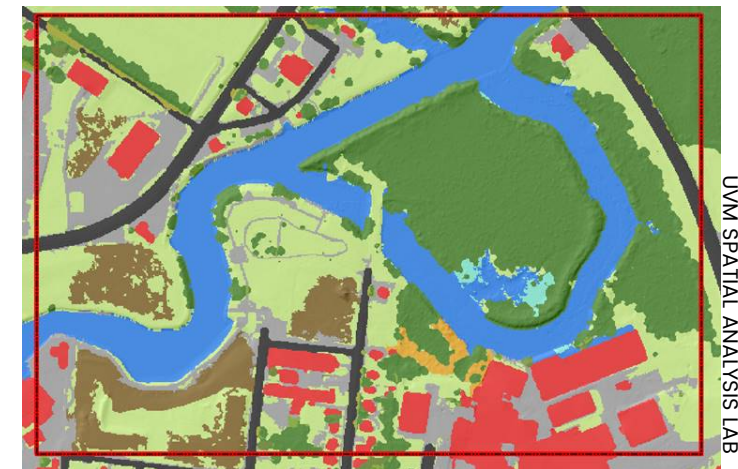
STATEWIDE COVERAGE GOAL: End of 2018

## Ongoing Maintenance:

- Frequency and extent of necessary updates to the data needed to successfully administer an impervious surface fee is currently unknown.
- Significant percentage of development in Vermont is not subject to any State permit/review, updates would likely need to come from orthophotography.
- Costs associated with updating the dataset are dependent on a several variables related to program specifics and advancements in technology.



30M Resolution Land Cover



1M Resolution Land Cover

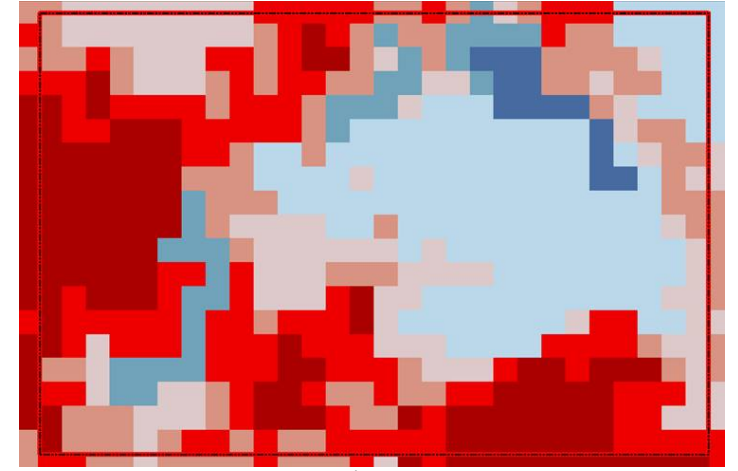


# Land Cover / Impervious Surface

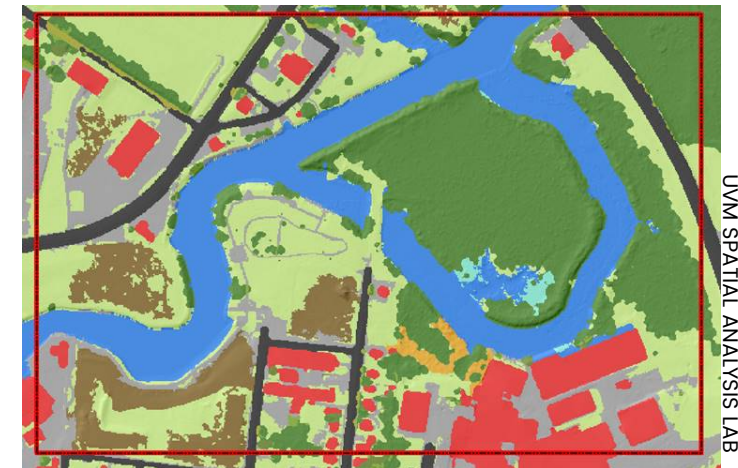
STATEWIDE COVERAGE GOAL: End of 2018

## Considerations:

- The definition of what qualifies as impervious surface could have significant impact on data needs. If the definition differs from mapped land cover classifications, it may be challenging if not impossible in any economical way to update the data.
- A process for updating and/or appealing any measurements must be clearly defined.



30M Resolution Land Cover



1M Resolution Land Cover

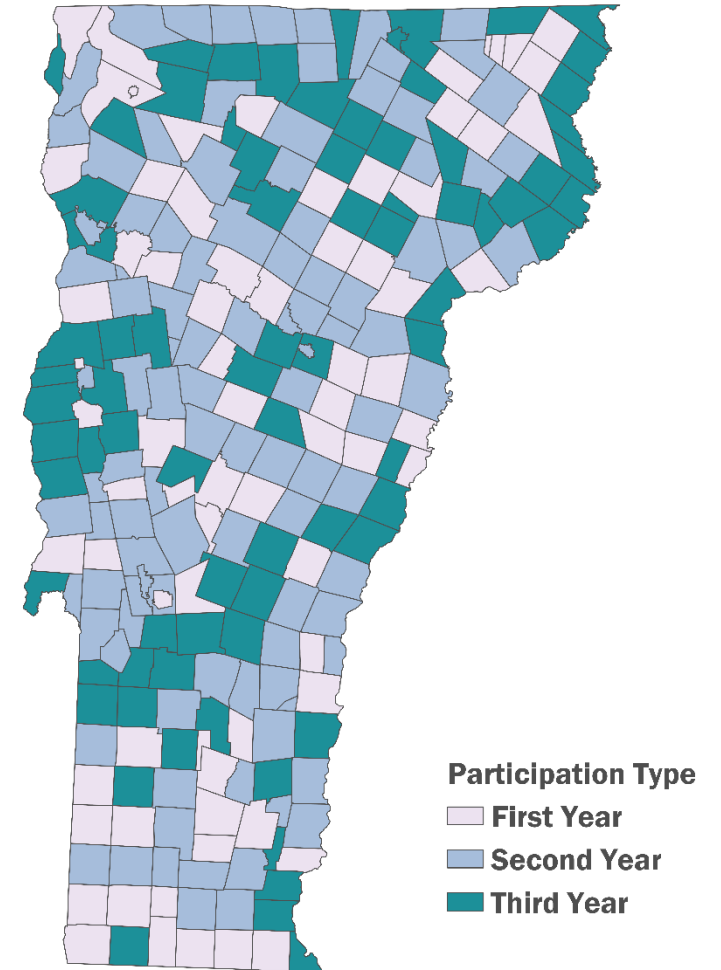
UVM SPATIAL ANALYSIS LAB

# Statewide Parcel Data

STATEWIDE COVERAGE GOAL: End of 2019

## Ongoing Maintenance:

- Annual updates necessary.
- Many municipalities currently do not update their parcel data on a regular basis.
- Surveys, when available, are typically only available in a paper format in the municipal land records.
- VCGI is working with State Parcel Advisory board to develop maintenance program to keep up to date

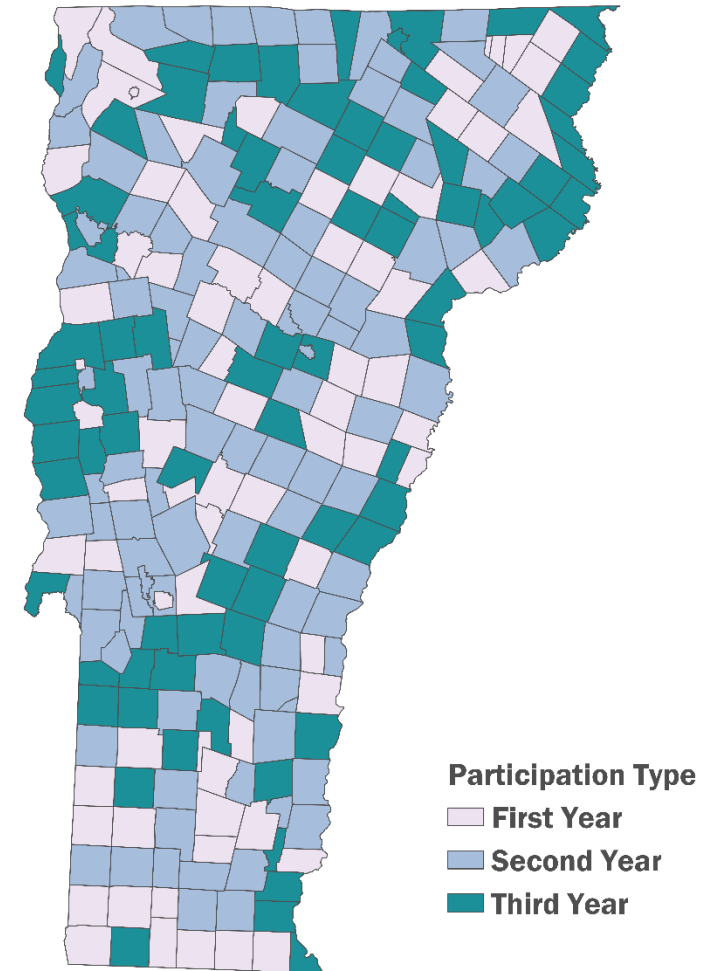


# Statewide Parcel Data

STATEWIDE COVERAGE GOAL: End of 2019

## Considerations:

- Parcel data will vary in quality and the boundaries represented are approximate.
- Differences in how municipalities maintain their grand lists may create challenges in consistently assigning an impervious surface value to certain kinds of properties, such as ‘unlanded parcels’ and common lands.
- The definition of a parcel, "all contiguous land in the same ownership, together with all improvements thereon," is problematic when certain span numbers become ‘inactive’ and not reflected on the grand list.





**QUESTIONS?**