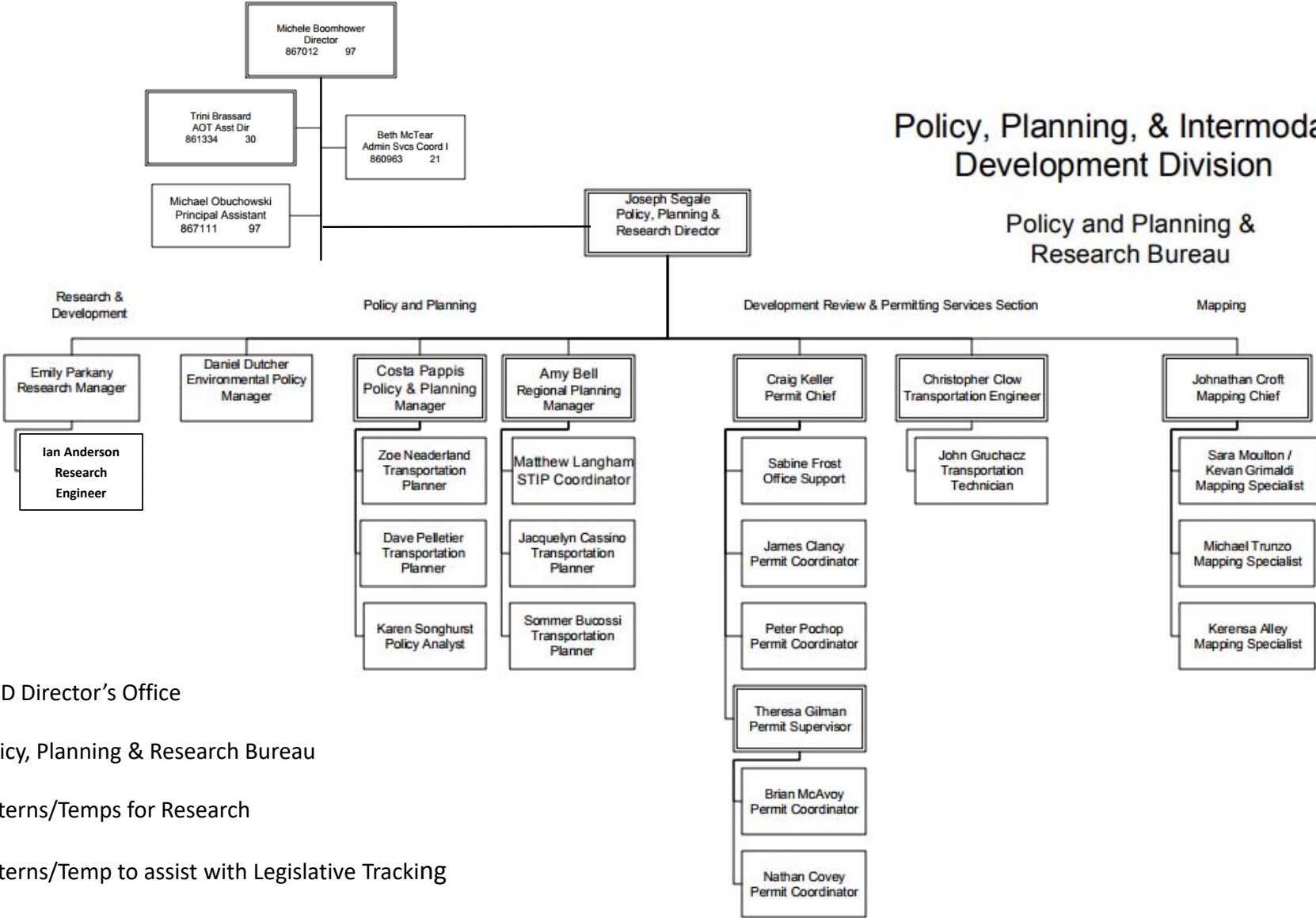


Policy, Planning, & Intermodal Development Division

Policy and Planning & Research Bureau



4 FTE PPAID Director's Office

25 FTE Policy, Planning & Research Bureau

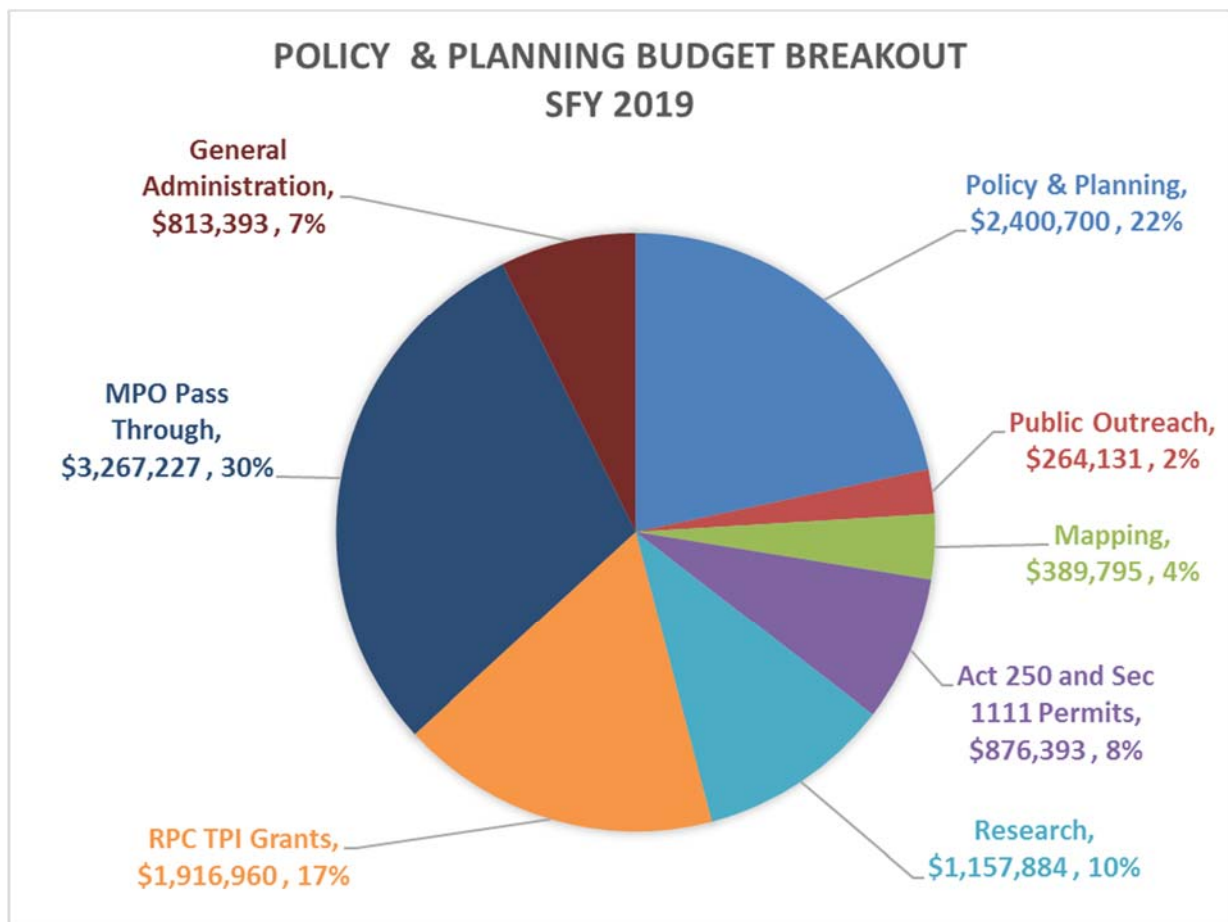
3 Interns/Temps for Research

2 Interns/Temp to assist with Legislative Tracking

Policy & Planning SFY 2019 Proposed Budget



Funding Sources	SFY 2018 As Passed	SFY 2019 Target Budget	Change
State Transportation Fund	\$ 2,706,491	2,822,771	4.3%
Federal Funds	\$ 7,755,912	\$ 8,171,508	5.4%
Interdepartmental Transfers	\$ 134,029	\$ 92,205	-31.2%
Totals	\$ 10,596,432	\$ 11,086,484	4.6%



POLICY & PLANNING SECTION

- Flood Vulnerability and Risk Project
 - 2040 Long Range Transportation Plan, Strategic Plan, RBA, PIVOT
 - Modal Plans (On-Road Bike Planning, Freight Plan, Aviation Plan, Transit Plan)
 - Federal Grant Applications (INFRA and TIGER 9 Pending)
 - Corridor Planning (VT 100-108; Luce Hill; US 7 Georgia)
 - MAP-21/FAST Act Rule Making Monitoring and Implementation
 - Environmental Policy Management (Energy Profile, EVs, Climate Change, Water Quality, Air Quality, Wildlife)
 - Legislative Report – Preparing for AVs in Vermont Report
 - National and International Coordination, State Interagency Coordination
 - STIP Management
 - [Better Connections Grant](#) (6 projects completed since 2015, 3 underway)
-

TRANSPORTATION PLANNING INITIATIVE & MPO COORDINATION

- Funding to 10 Regional Planning Commissions and the Chittenden County RPC/MPO
 - Cooperation and coordination between VTrans, RPCs and Municipalities
 - Project prioritization
 - Local transportation planning and technical assistance (45% of TPI grants)
 - Road, bridge and culvert inventories, Municipal Roads General Permit support
-

PUBLIC OUTREACH

- VTrans Fact Book and Annual Report
 - On-Line and Broadcast Media Management, VTransparency, VTrans Website
-

MAPPING SECTION

- Town Highway Maps and Mileage Certifications
 - Federal Highway and National Highway System Data Management and Classification
 - Cartography and GIS Spatial Analysis Services
 - Curve and intersection data
-

RESEARCH SECTION

- [VTrans Research Symposium](#) (30 projects) - Employee Retention, UAV Bridge Inspection, Snow Plow Route Optimization, Effect of Capital Projects on Snow and Ice Removal, DSRC at Traffic Signals
 - VTrans-UVM Transportation Research Collaborative
 - New England Transportation Consortium, TRB and AASHTO participation
-

PERMITTING SERVICES: ACT 250 AND SECTION 1111 COMMERCIAL PERMITS

- 250-300 Commercial and 400 Utility/Misc. Section 1111 Permits Annually
 - Review and comment on Act 250 permits & Act 145-Transportation Impact Fee Management
-