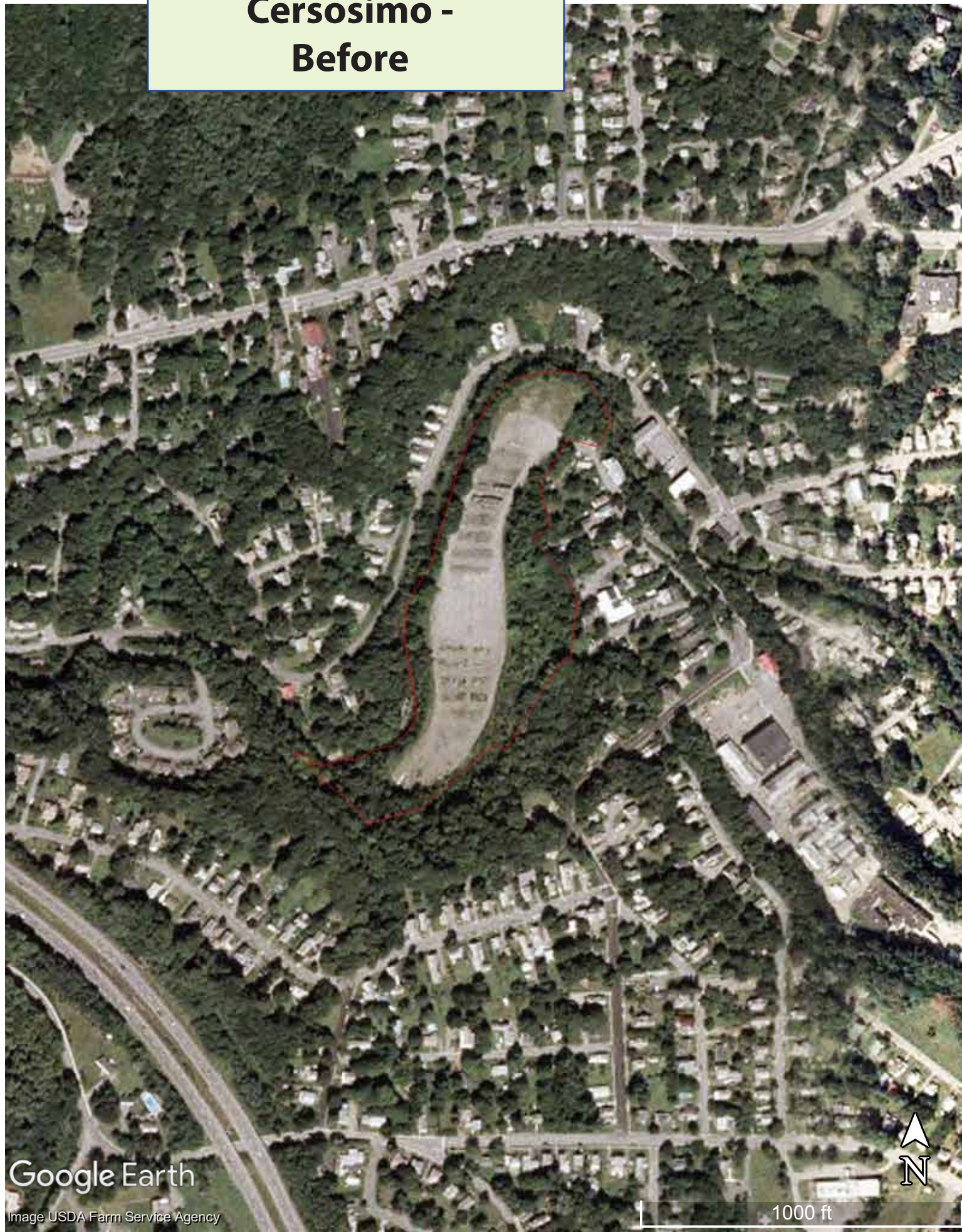


Cersosimo - Before



Cersosimo - Conceptual Site Plan



FLOOD STORAGE

- A restored floodplain will provide storage capacity during high water events, reducing peak flows and helping protect downstream property

WATER QUALITY

- Stormwater runoff will be redirected into a wetland, protecting Whetstone Brook's water quality

PUBLIC ACCESS

- A pedestrian trail will meander through the restoration area, and provide river access
- Through partnerships, other public uses are possible, such as community gardens, a conservation nursery, a picnic area, or a playground

WILDLIFE HABITAT

- The restoration effort will create wildlife habitat, including grasslands and riparian forests, restoring species present prior to conversion to a lumber yard.

