

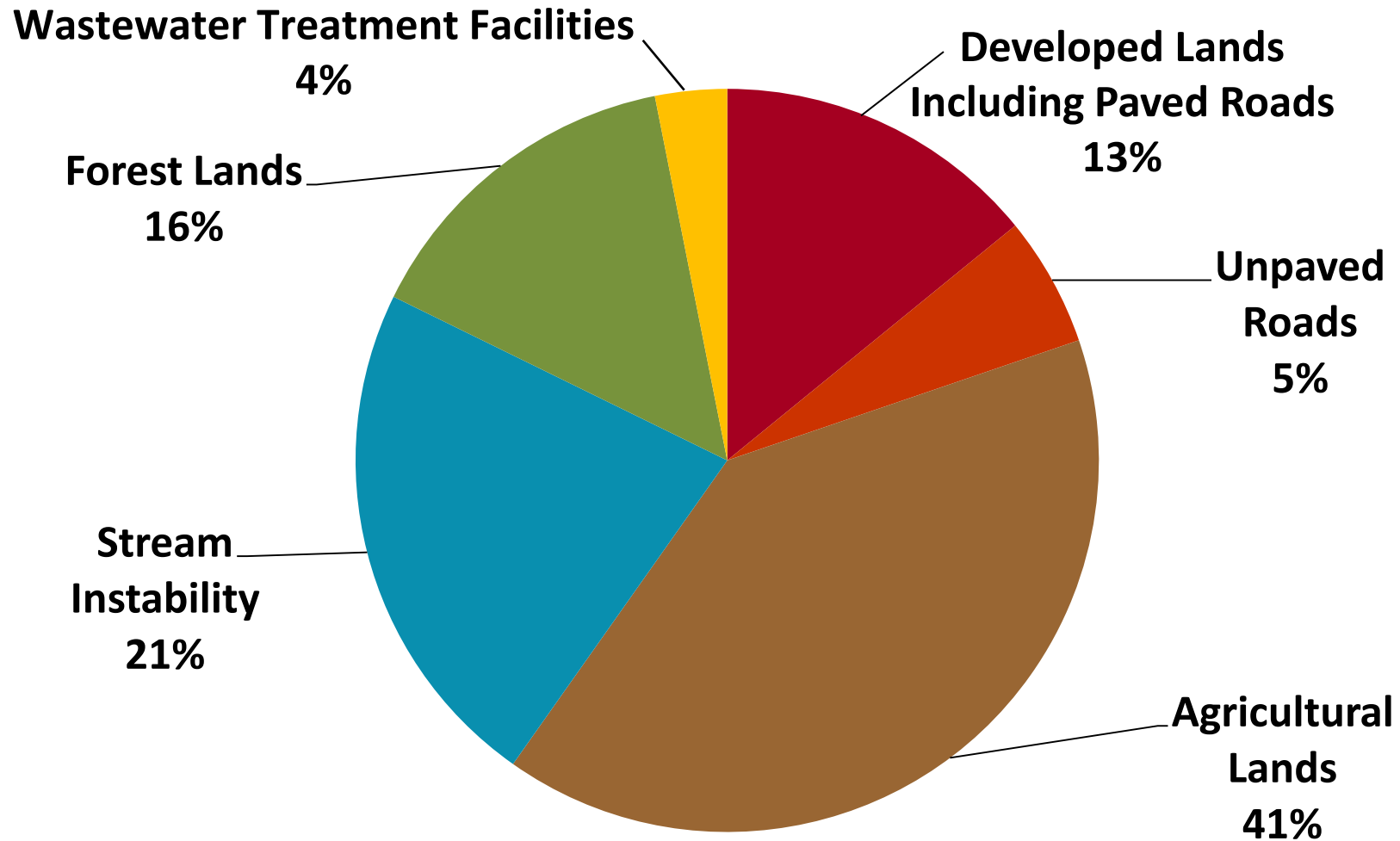
The Vermont Lake Champlain Phosphorus TMDL Phase I Implementation Plan



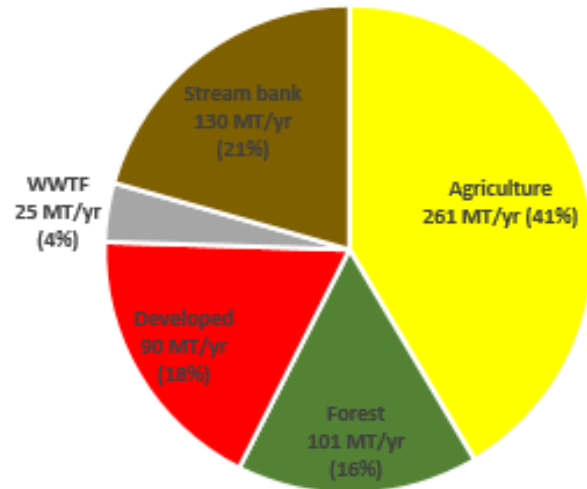
Kari Dolan, Clean Water Initiative Program Manager
February 2, 2017



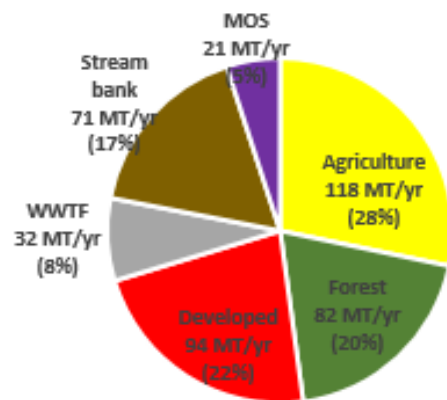
Phosphorus Sources in the Vermont Portion of the Lake Champlain Basin



Base Load
631 Metric Tons/Year



Vermont Reduction
Required = 213 mt/yr (34%)

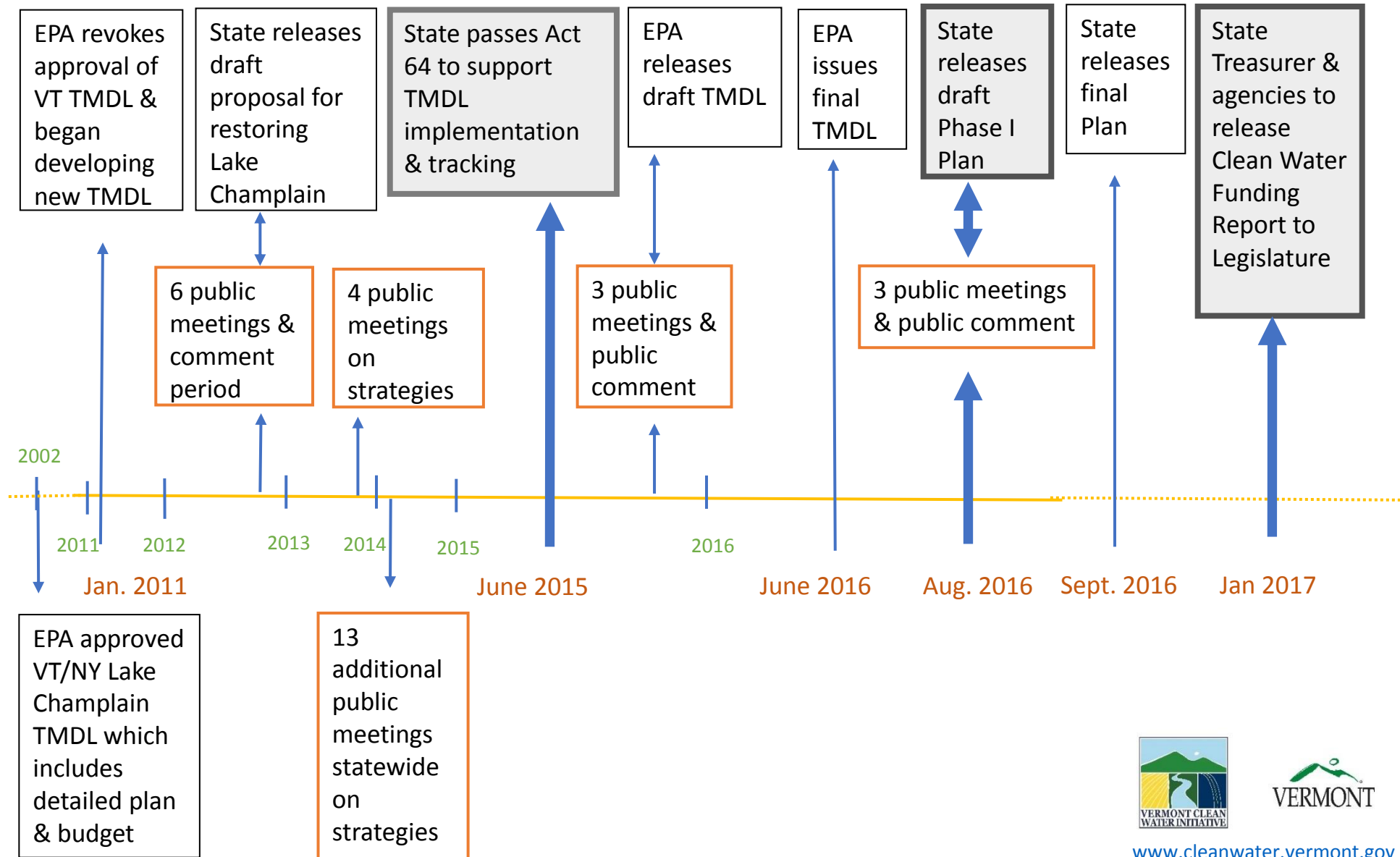


TMDL Loading Capacity and Allocations
418 Metric Tons/yr

34% phosphorus
reduction over
20 years



Lake Champlain TMDL and Phase I Implementation Plan Key Milestones 2011-2016



“All-In” Approach

Wastewater Treatment



Forestry



Runoff from Developed Land



River Channels



Roads



Agriculture

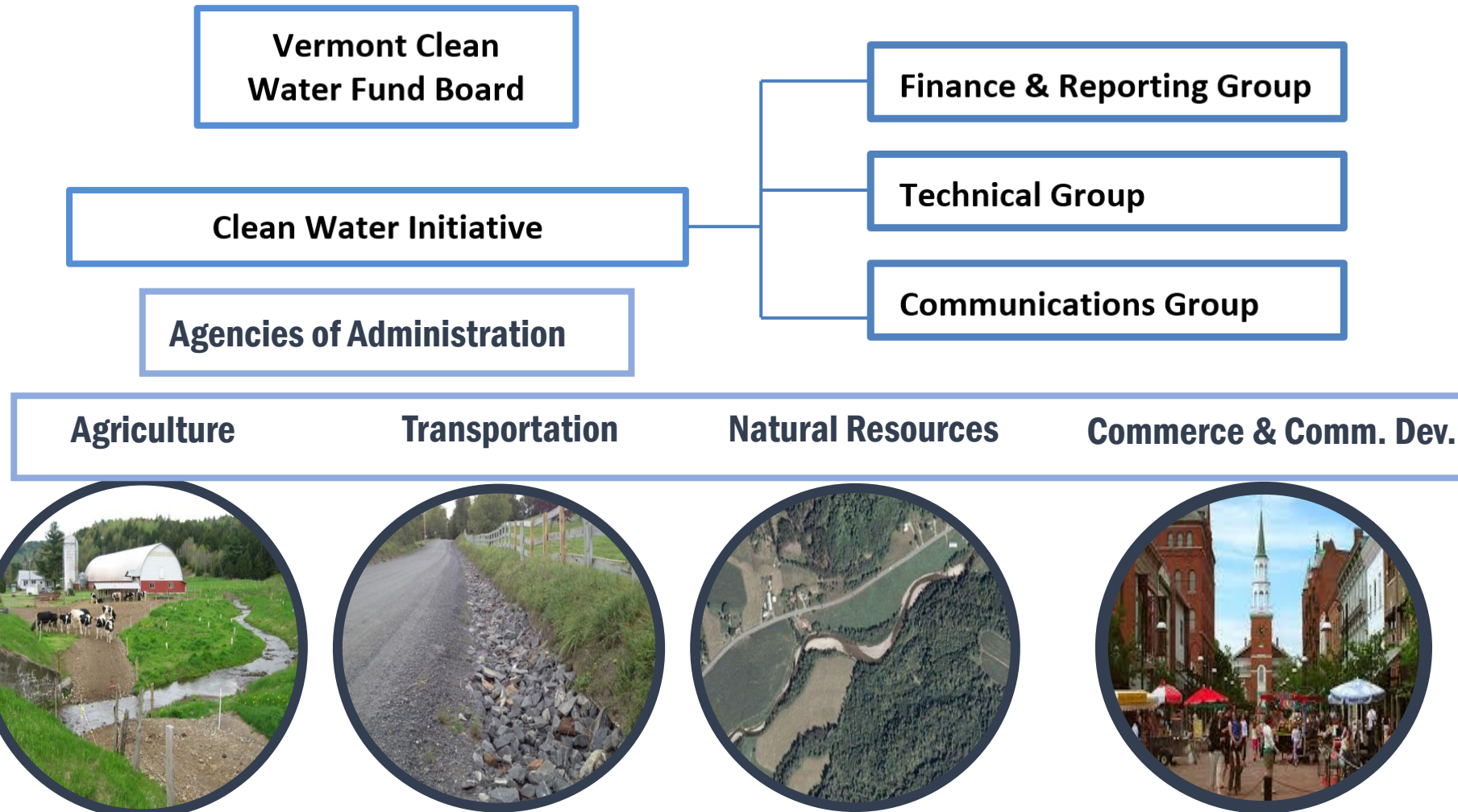


The Vermont Lake Champlain Phosphorus Phase 1 Implementation Plan

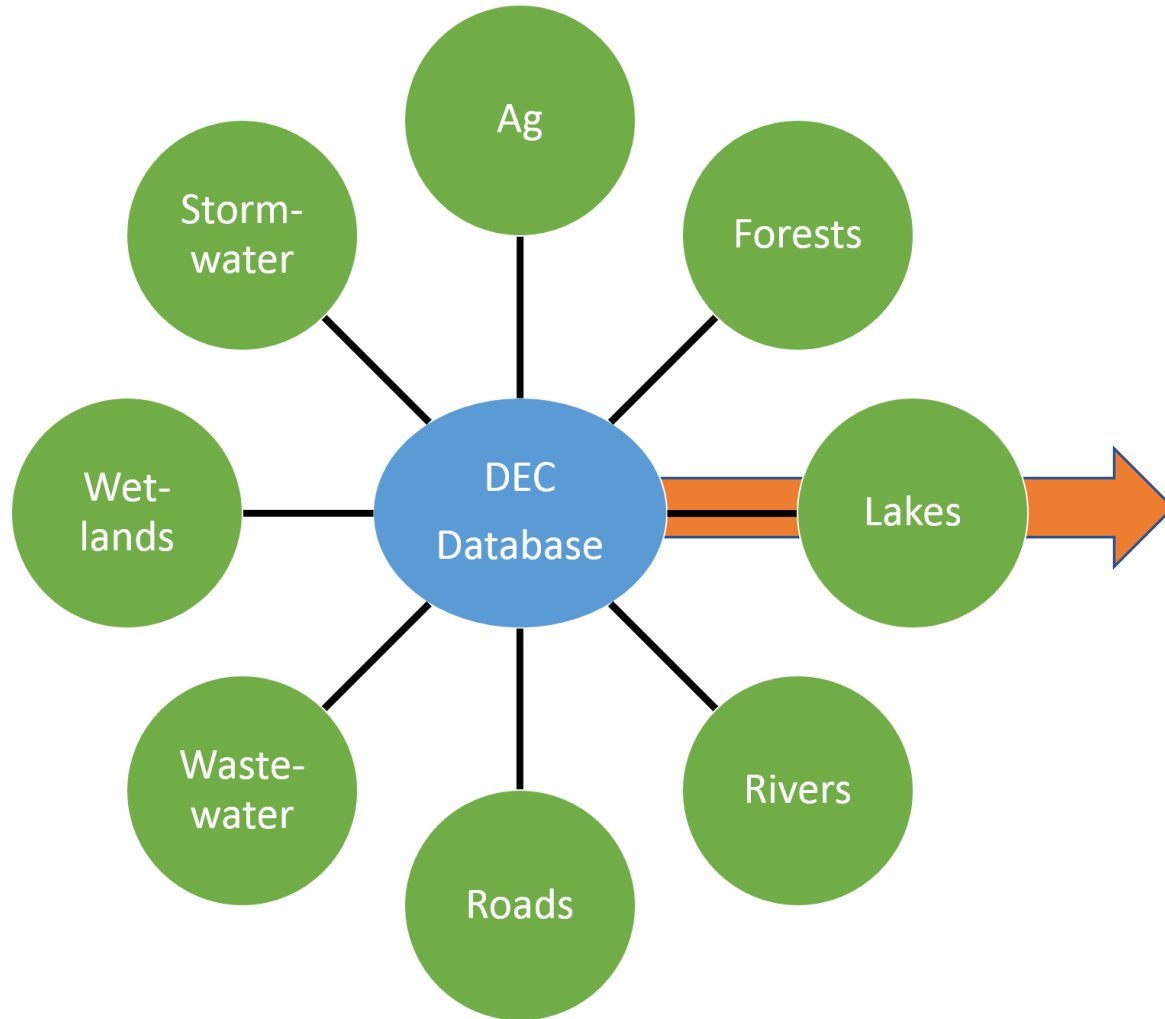
- Incorporates Act 64 elements
- Includes Natural Resource Restoration and Management (rivers, wetlands, forests)
- Describes Basin Planning as “Phase 2” to support implementation
- Promotes a “Clean Water Initiative” for implementation

Phase I Plan Program Areas
Agricultural Programs
Stormwater Management
Rivers Management
Wetlands Management
Lakes Management
Forest Management

Vermont Clean Water Initiative



Working with other Agencies to Track Progress



Tracking Clean Water Restoration Activities

Clean Water Investment & Performance Report

Financial Outcomes

Social Outcomes

Performance Outcomes

Environmental Outcomes

VERMONT CLEAN WATER INITIATIVE 2016 INVESTMENT REPORT



Agency of Administration
Agency of Agriculture, Food and Markets
Agency of Commerce and Community Development
Agency of Natural Resources
Agency of Transportation