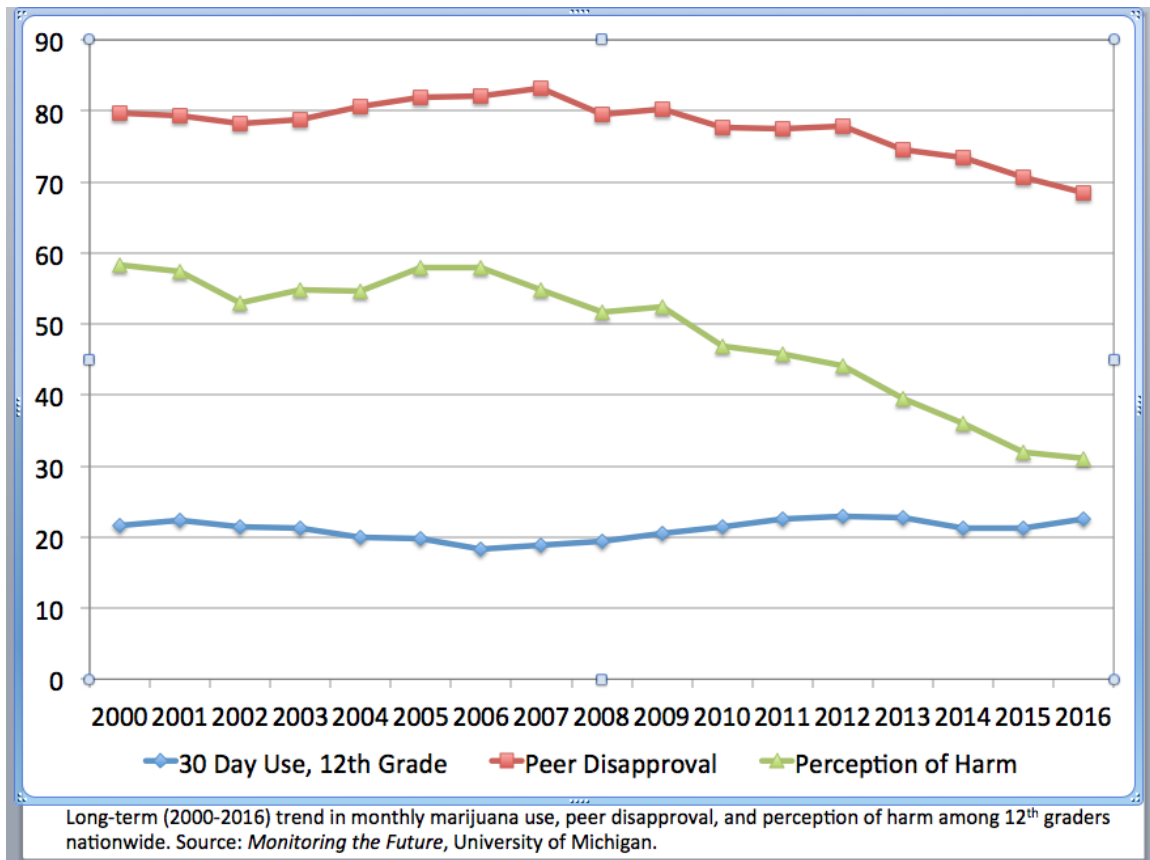


NATIONWIDE (MTF/YRBS DATA) – PUBLISHED JANUARY 2017



These data are from the largest nationwide survey, and show teen use is flat since 2000, despite perception of harm falling by nearly half (from 58% to 31% of 12th graders), and teen social disapproval of marijuana use falling by approximately 14% (from 80% to 68% of 12th graders).

The historical (inverse) correlation between teen use and either social disapproval or perception of harm disappeared in the early-to-mid 1990's.