

Vermont Department of Mental Health

OVERVIEW AND UPDATES

MELISSA BAILEY, COMMISSIONER

Proposed Agenda

DEPARTMENT OVERVIEW

2016 - KEY HIGHLIGHTS

Departmental Overview

CENTRAL OFFICE ORGANIZATION

PROVIDER AGENCIES

DEPARTMENTAL PROGRAMS

BUDGET SNAPSHOT

Central Office Organization

Overall Operations supported by ~65 positions

- Administrative Support Unit
- Financial Services Unit
- Legal Services Unit
- Research & Statistics Unit
- Clinical Care Management Unit
- Operations, Policy, & Planning Unit
- Quality Management Unit
- Children, Adolescent and Family Unit (CAFU)
- Adult Mental Health Services Unit

Designated Providers

Designated Agencies

- Clara Martin Center
- Counseling Services of Addison County
- Health Care and Rehabilitation Services of Southeastern Vermont
- Howard Center
- Lamoille County Mental Health Services
- Northwest Counseling and Support Services
- Northeast Kingdom Human Services
- Rutland Mental Health Services
- United Counseling Service
- Washington County Mental Health Services

Specialized Services Agencies

- Pathways Vermont
- Northeastern Family Institute

Designated Hospitals

- Brattleboro Retreat
- Central Vermont Medical Center
- Rutland Regional Medical Center
- University of Vermont Medical Center
- Windham Center
- Vermont Psychiatric Care Hospital (State-run)

State Secure Residential

- Middlesex Therapeutic Community Residence

Provider Capacity

Designated Agencies

- Adult Crisis Beds: 38 beds
- Youth Crisis Beds: 12 beds
- Adult Intensive Residential: 42 beds

Designated Hospitals

- Adult – Level 1 involuntary: 45 beds
- Adult – Non-Level 1 (involuntary and voluntary): 143 beds
- Children and Youth: 28 beds

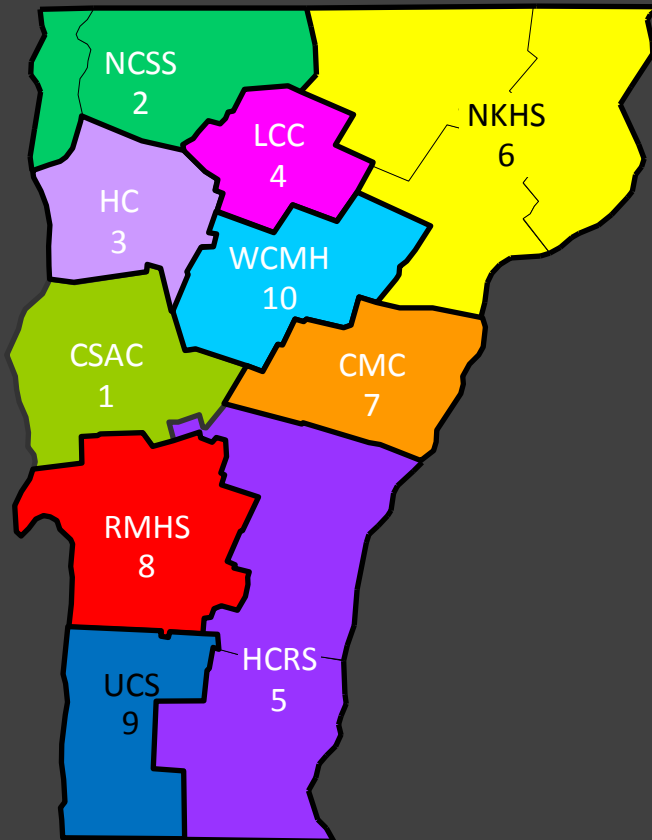
Peer Service Agencies

- Adult Crisis Beds: 2 beds
- Adult Intensive Residential: 5 beds

State Secure Residential

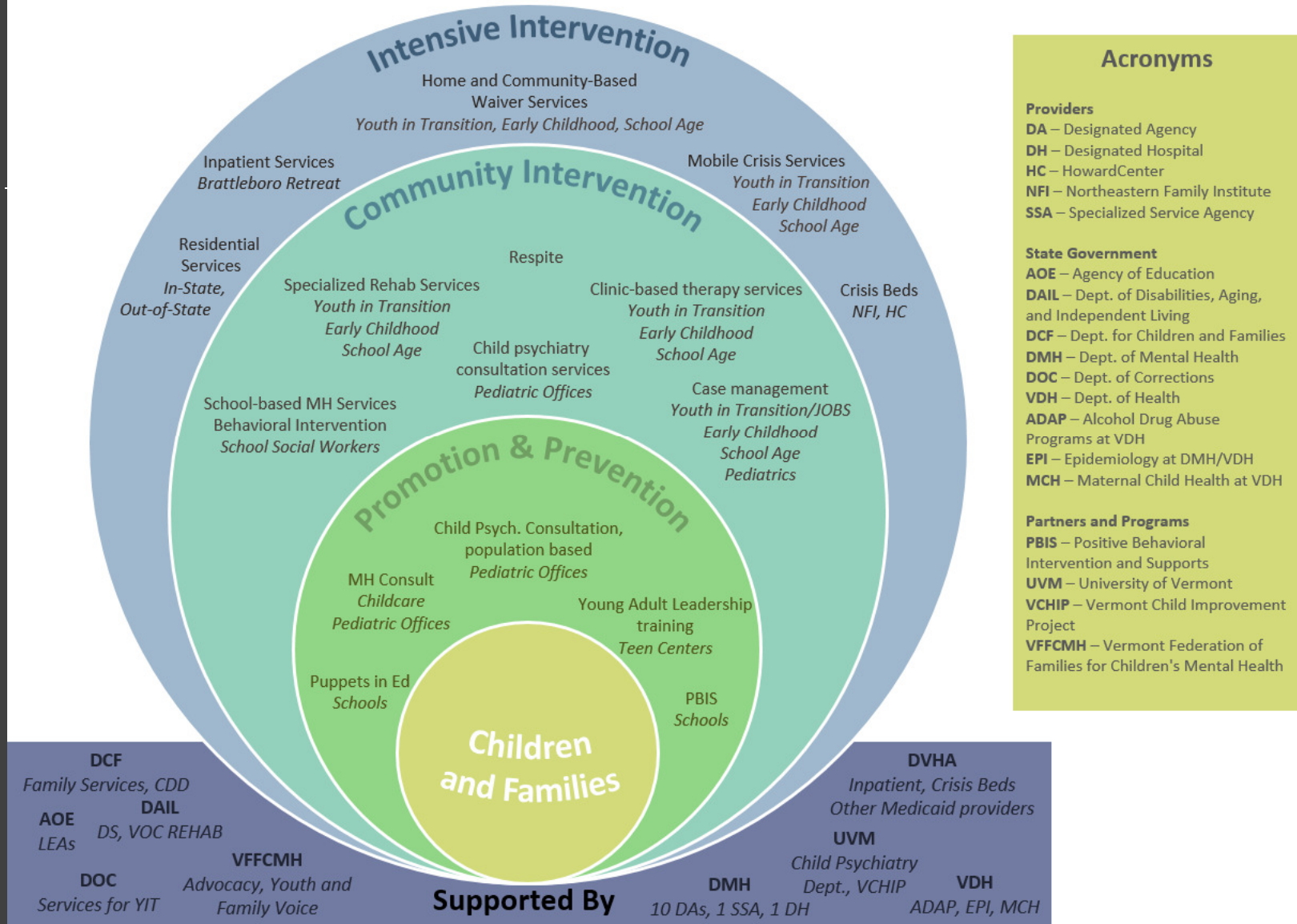
- Middlesex Therapeutic Community Residence: 7 beds

Designated Providers

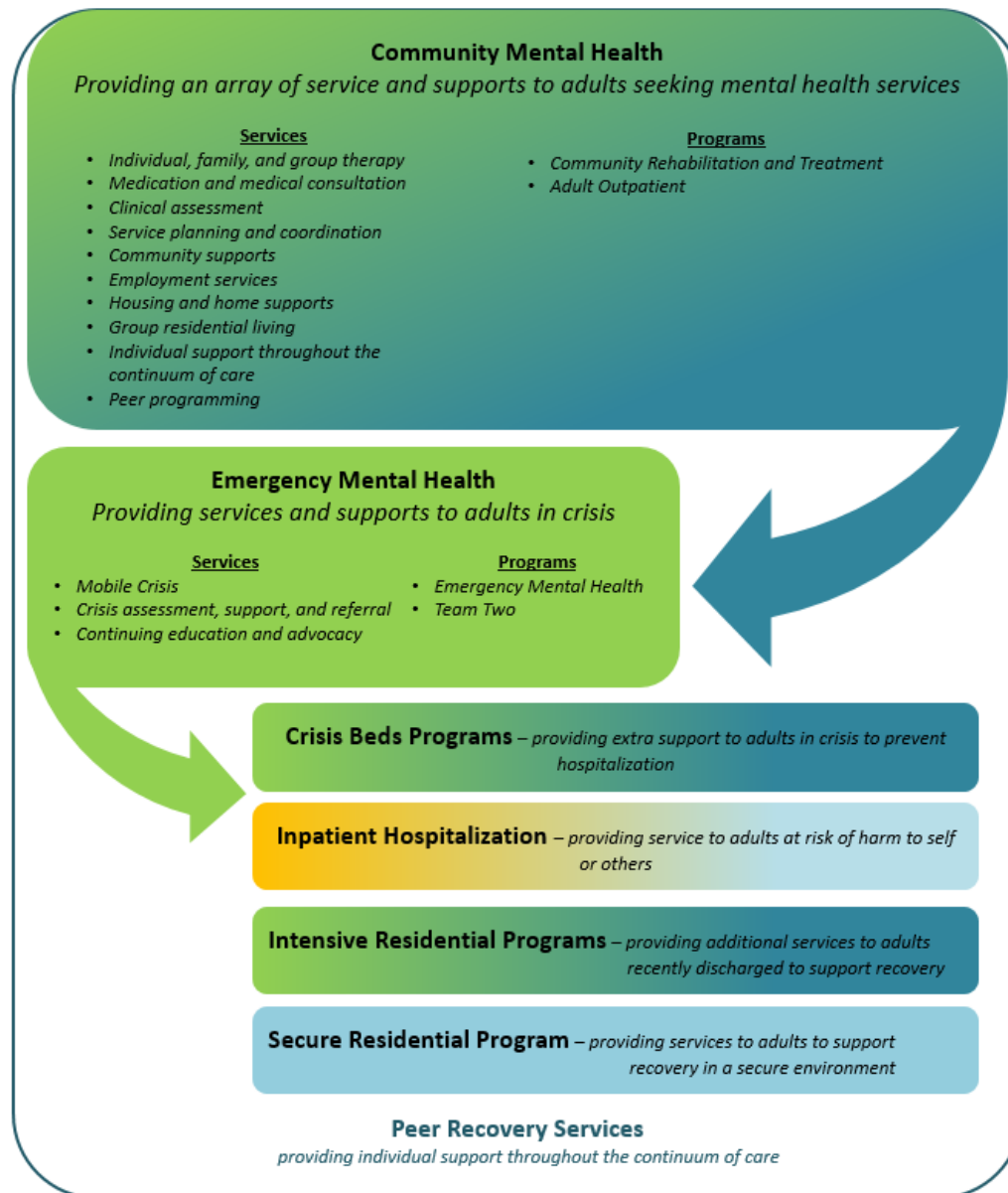


CMC	Clara Martin Center
CSAC	Counseling Services of Addison County
HCRS	Health Care and Rehabilitation Services of Southeastern VT
HC	Howard Center
LCMH	Lamoille County Mental Health Services
NCSS	Northwest Counseling and Support Services
NKHS	Northeast Kingdom Human Services
RMHS	Rutland Mental Health Services
UCS	United Counseling Service
WCMH	Washington County Mental Health Services
NFI	Northeastern Family Services (SSA)
PV	Pathways Vermont (SSA)

Children's Mental Health System of Care



Department of Mental Health Adult Mental Health System of Care



Color Legend

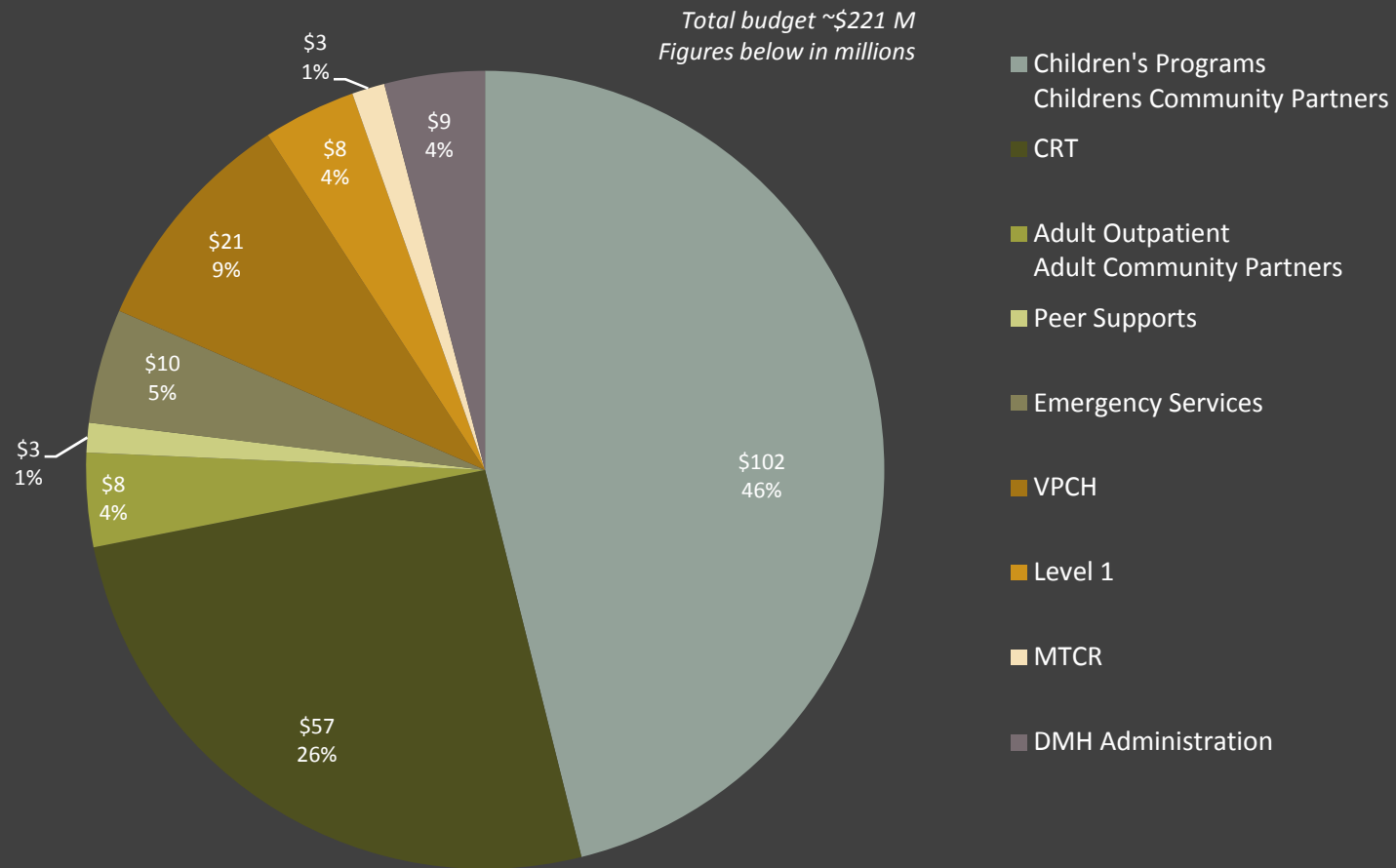
- Department of Mental Health (DMH)**
- Designated Agencies**
private, non-profit service providers that are responsible for ensuring needed services are available through program delivery, local planning, service coordination, and monitoring outcomes within their geographic region.
- Specialized Services Agencies**
private, non-profit service providers that provide a distinctive approach to service delivery and coordination or provide services that meet distinctive individual needs.
- Private Providers**
Psychiatrists, Psychologist, Nurse Practitioners, Social Workers Physician Assistants, Licensed Mental Health Clinicians, Community Hospitals

Community Programs

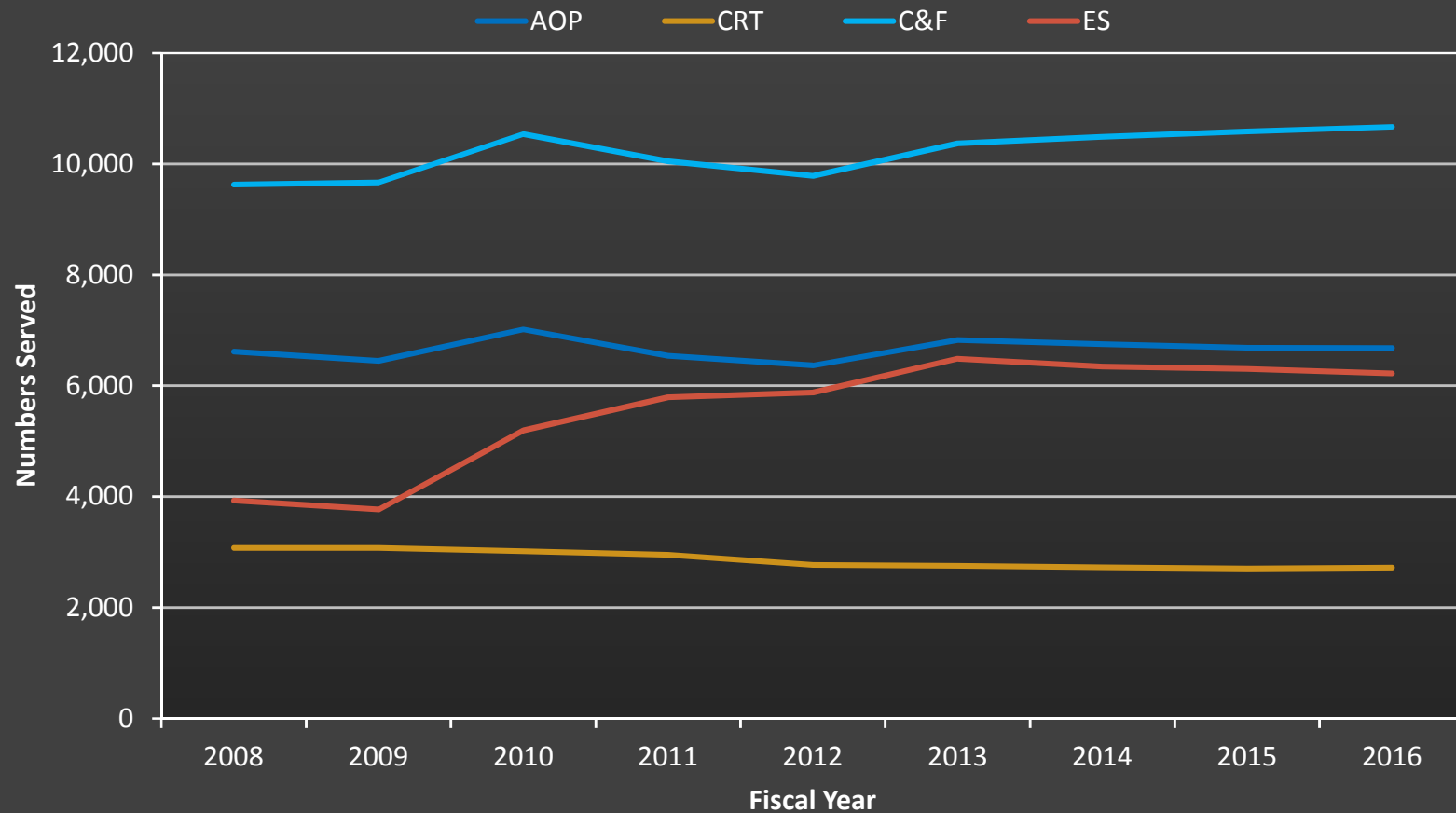
Program	Description
Adult Outpatient (AOP)	Provides services for adults who do not have prolonged serious disabilities but who are experiencing emotional, behavioral, or adjustment problems severe enough to warrant professional attention
Community Rehabilitation and Treatment (CRT)*	Provides services for adults with severe and persistent mental illness
Children and Families (C&F)*	Provide services to children and families who are undergoing emotional or psychological distress or are having problems adjusting to changing life situations.
Emergency Services	Serves individuals who are experiencing an acute mental health crisis. These services are provided on a 24-hour a day, 7-day-per-week basis with both telephone and face-to-face services available as needed.
Advocacy and Peer Services	Broad array of support services provided by trained peers (a person who has experienced a mental health condition or psychiatric disability) or peer-managed organizations focused on helping individuals with mental health and other co-occurring conditions to support recovery

**mandated service population*

Expenses Snapshot



People Served by Program



Performance Measures

RBA Clear Impact Scorecards

- The Department of Mental Health has several RBA scorecards containing data and performance measures related to our system of care.
- To view the RBA Scorecards for the Department of Mental Health:

<http://mentalhealth.vermont.gov/reports/results-based-accountability>

[The Department of Mental Health \(DMH\) Scorecard](#)
[Reducing Seclusion and Restraint in Vermont's Psychiatric Hospitals](#)
[Vermont Psychiatric Care Hospital \(VPCH\) Outcomes](#)

[DMH System Snapshot \(in development\)](#)
[DMH Continued Reporting \(in development\)](#)

2016 Key Highlights

- Implementation of the Electronic Health Record (EHR) at VPCH
- Ongoing development of the Medicaid Pathway
- Vermont Crisis Text Line
- Suicide Prevention (Zero Suicide, U Matter, VT gun shop project)
- Mental Health first-aid
- Team two training
- Continued work with VCPI
- Designation of White River Junction VA Medical Center
- Designation of Pathways Vermont
- Secure Residential Program RFP
- Youth Hospital Diversion
- Agency of Education collaborations on coordinated service planning