

Clinical and Claims Data

Mary Kate Mohlman
Director of Health Care Reform
Agency of Human Services

MANAGERIAL

Statewide Data Infrastructure Supports Population Health Management: Diabetes Case Study

Craig Jones, MD; Mary Kate Mohlman, PhD; David Jorgenson, MS; Karl Finison, MA; Katie McGee, MS; and Hans Kastensmith

States and healthcare organizations across the country are testing strategies intended to control the growth of healthcare costs while improving care quality and health outcomes. To achieve these goals, delivery systems must address the medical, social, and behavioral needs of populations with high-cost, complex conditions, particularly as upstream

ABSTRACT

OBJECTIVES: To understand how a statewide data infrastructure, including clinical and multipayer claims data, can inform preventive care and reduce medical expenditures for patients with diabetes.

**FIGURE 1. Total Cost of Care per Patient in 2014
Compared With Most Recent A1C Test Outcome^a**

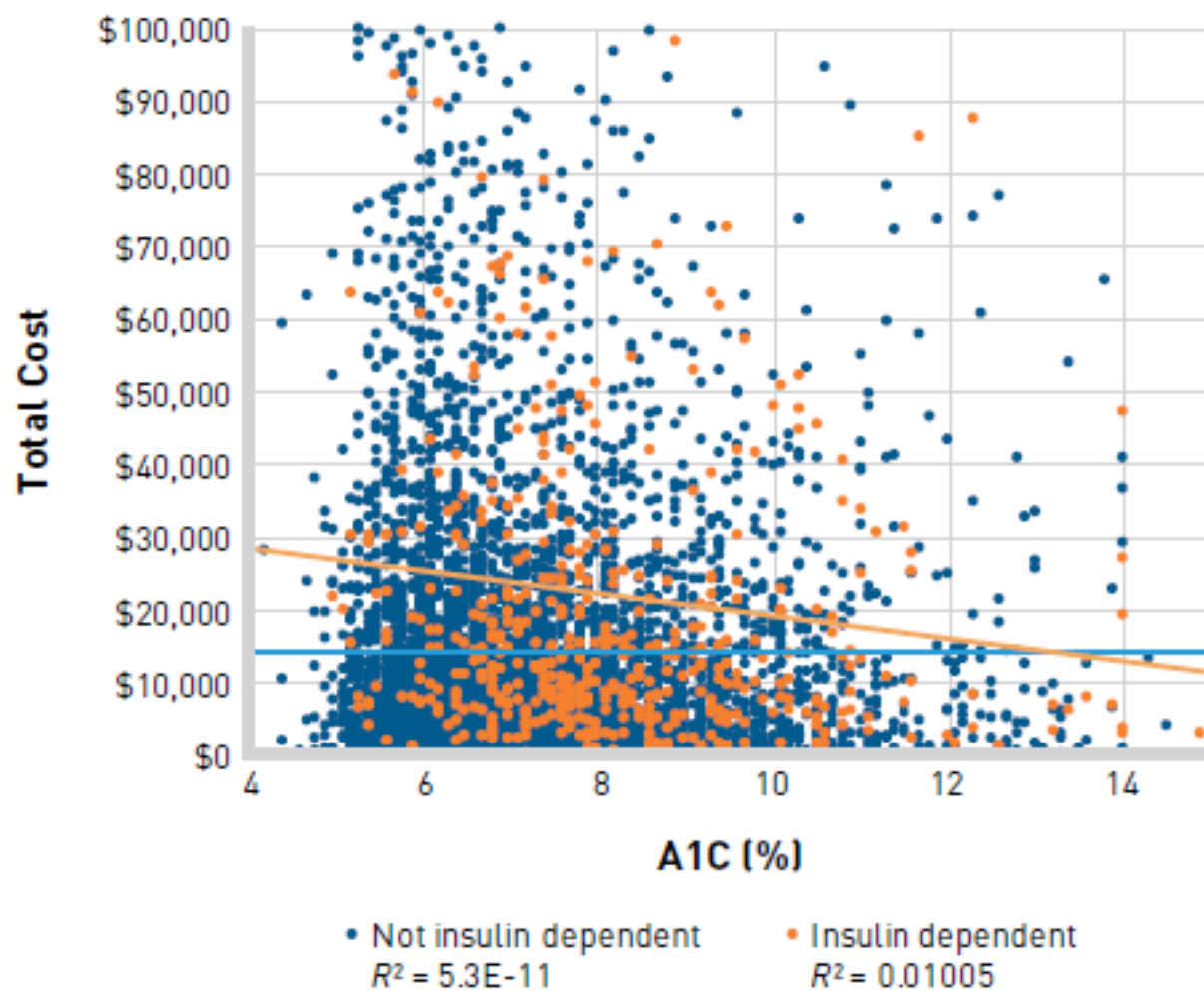


FIGURE 2. Relative Effect of Variable on Total Expenditures, With 95% Confidence Interval^a

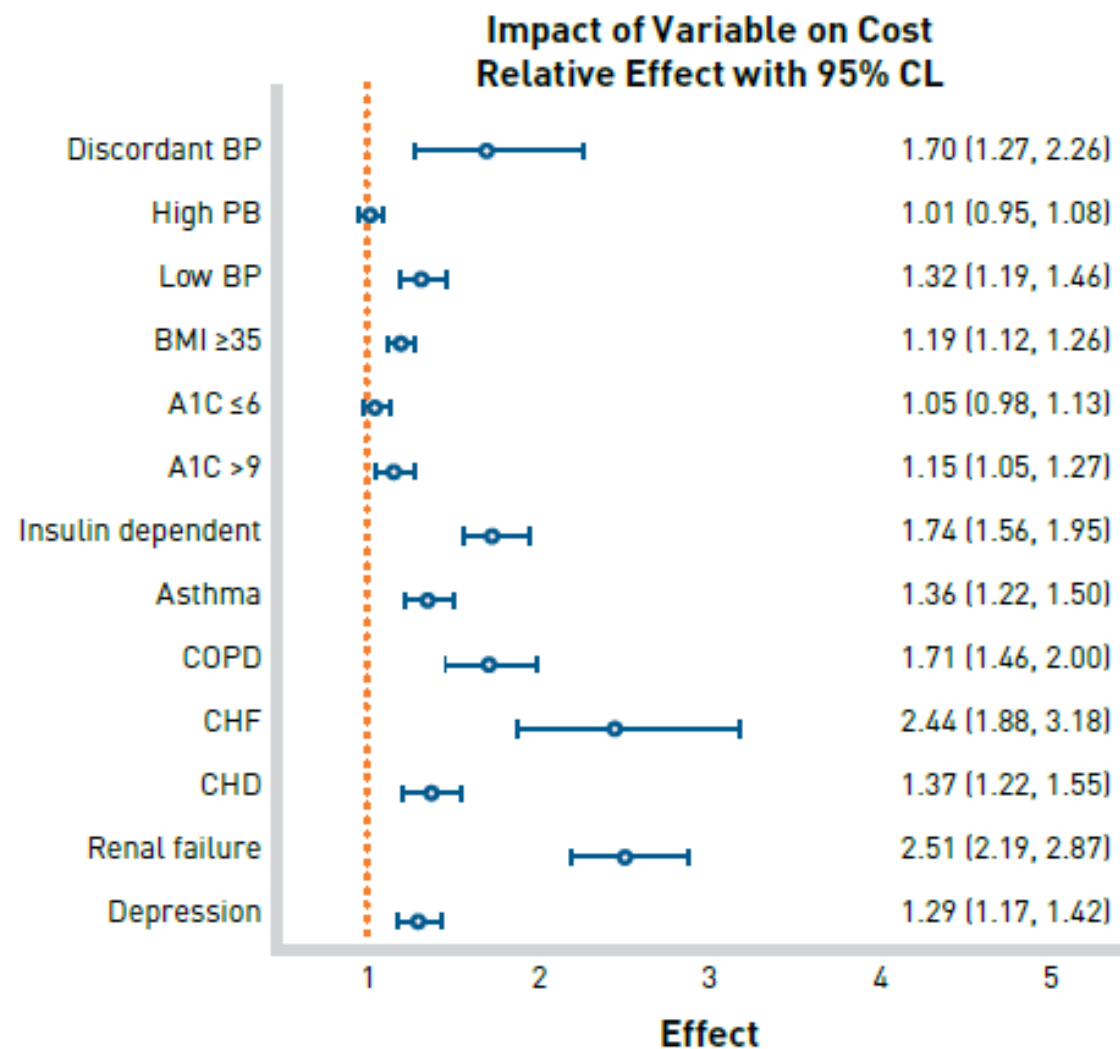


FIGURE 3. Relative Effect of Variable on Hospital Inpatient Admissions, With 95% Confidence Interval^a

