

**Department of Public Service**  
**Telecom & Connectivity Division**  
Ten Year Telecom Plan & Action Plan

# Ten Year Telecom Plan

## Steps to-date

- Conducted business and residential surveys through contracted vendor – Report due soon
- Met with representatives of each Agency or Department
- Received feedback and written content for TYTP from Agencies
- Issued surveys to health providers and service industry reps (DOH)
- Conducted initial kick-off public hearings around the state (St. Johnsbury, Dover, Montpelier).
- Broadband Action Plan Update (release January 15, 2018)
- Engaged with interested parties and stakeholders:
  - Access Management Organizations
  - Broadband Service Providers
  - Department of Agriculture (issued survey to 5200 farms statewide)
  - Webpage for updating public of the efforts, as well as for filing public comments

# Outreach





# Connectivity Initiative 2018

## Connectivity Division Annual Broadband Report

- Broadband statistics including underserved locations and road miles

## Outreach: solicit requests for partnerships

- Notice of program details publicized through RPCs, ACCD, VLCT

## Stakeholder interest

- Upon stakeholder request, PSD will prepare detailed town-level maps and rough estimates of deployment costs

## Request for Proposals

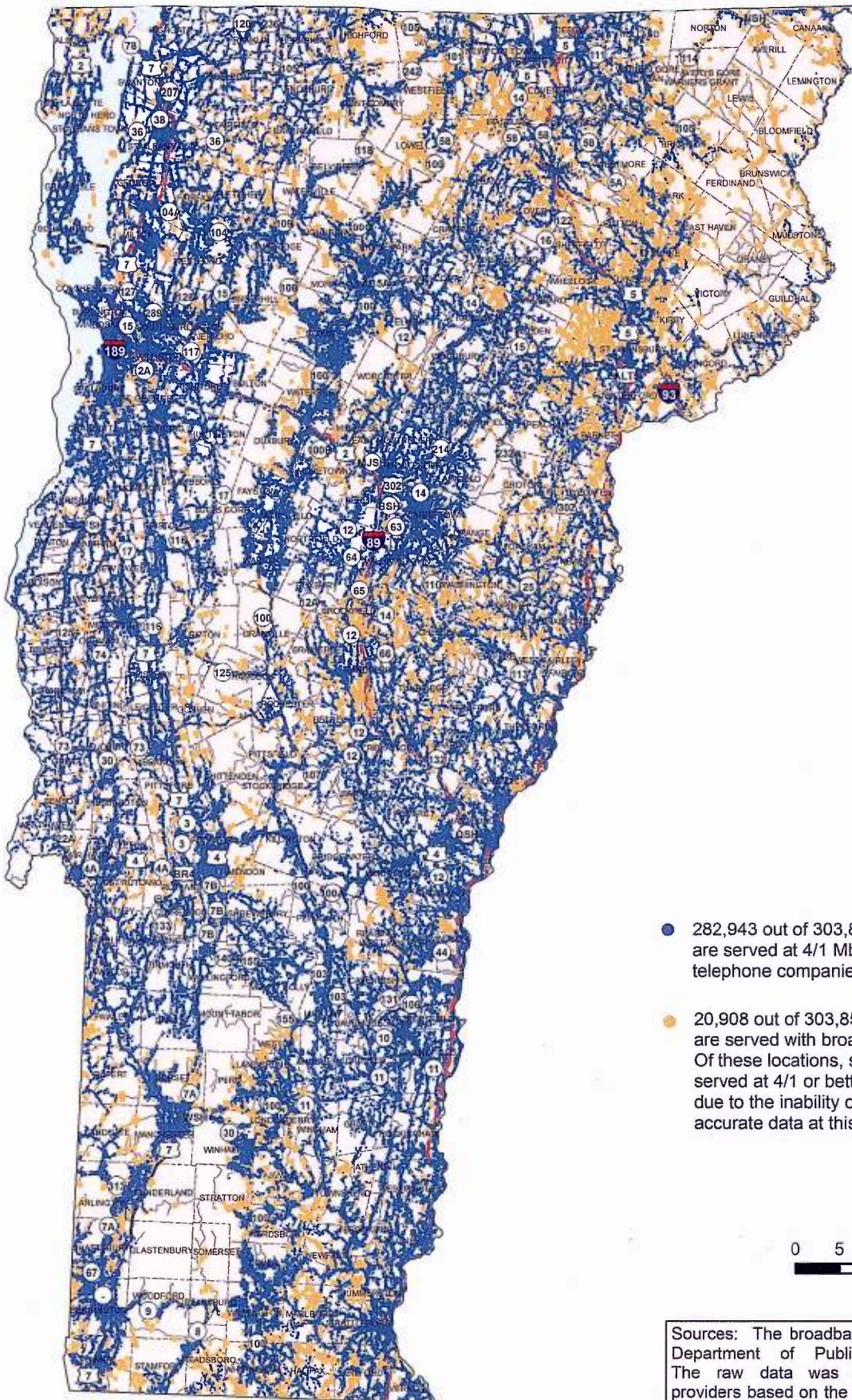
- PSD will work with stakeholders to leverage State resources
- PSD will solicit proposals from service providers

## Award

- Stakeholder will canvas residents in project area and obtain signed contracts
- Final take rate of signed up subscribers will guide cost sharing



# Broadband Availability by E911 Building Location 4 Mbps Down / 1 Mbps Up or Better



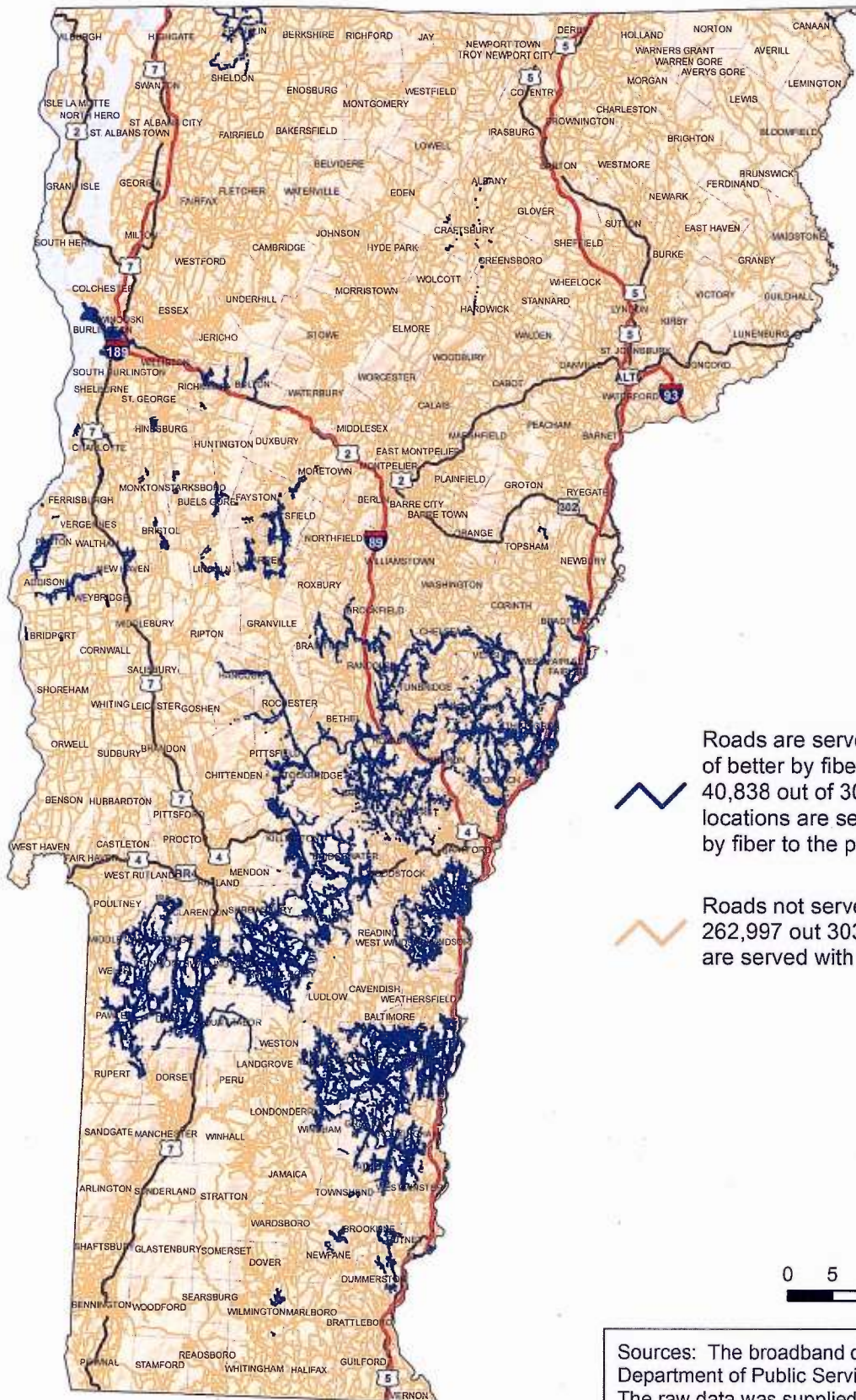
- 282,943 out of 303,851 (93%) E911 building locations are served at 4/1 Mbps or better by independent telephone companies, cable, or fiber to the premises.
- 20,908 out of 303,851 (7%) E911 building locations are served with broadband less than 4/1 Mbps. Of these locations, some number are already served at 4/1 or better but this cannot be verified due to the inability of the companies to provide accurate data at this time.

0 5 10 20  
Miles

Sources: The broadband dataset was prepared by the Vermont Department of Public Service (PSD) on 1/3/2018. The raw data was supplied by Vermont internet service providers based on the August 2017 PSD request for information. The base data of administrative boundaries and roads are supplied by the Vermont Center for Geographic Information (VCGI). The PSD makes no guarantee to the accuracy of this information.



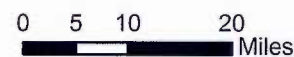
# Broadband Availability by Road Segment 100 Mbps Down / 100 Mbps Up or Better



Roads are served at 100/100 Mbps of better by fiber to the premises or cable. 40,838 out of 303,835 (13.4%) building locations are served at 100/100 Mbps or better by fiber to the premises or cable.



Roads not served at 100/100 Mbps or better. 262,997 out 303,835 (86.6%) building locations are served with broadband less than 100/100.



Sources: The broadband dataset was prepared by the Vermont Department of Public Service (PSD) on 1/3/2018. The raw data was supplied by Vermont internet service providers based on the August 2017 PSD request for information. The base data of administrative boundaries and roads are supplied by the Vermont Center for Geographic Information (VCGI). The PSD makes no guarantee to the accuracy of this information.