

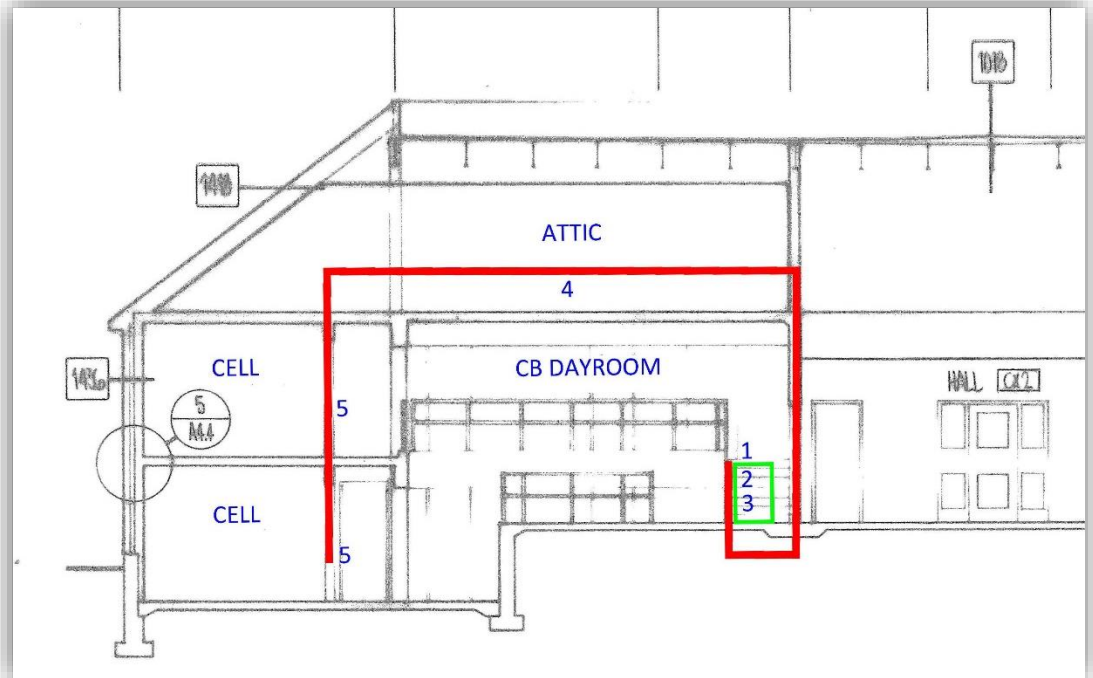
Correctional Facility Door Control Replacement

Northern State Correctional Facility

EXISTING DOOR CONTROL SYSTEM



CB LIVING UNIT CONTROL PODIUM



TYPICAL LIVING UNIT DOOR CONTROL PATH

1. Living unit control podium
2. Circuit board
3. Ribbon cables to wiring
4. Relays in attic
5. Door locks at cells

CURRENT ISSUES AT NSCF

SECURITY

- Doors don't operate from podiums/MC, manual keying required
 - Issue could be anywhere within the system
 - Affects individual cells as well as main doors - living unit entrance, fire doors, etc.
- Incorrect/no indication from podiums
 - Some doors consistently show incorrect position
 - Some vary each time the door is used (magnets in the frame and door don't line up correctly, magnets have worn out, etc.)
 - 87 doors with indication in MC, 43 operate correctly

MAINTENANCE

- No replacement parts for the control system
 - Failures within circuit board, ribbon cable, or relay; magnet issue
- Southern Steel locks are obsolete
 - One source in the country for parts, BGS rebuilds
 - Replacement Airteq locks do not have door position for indication, Maintenance must install

OPERATIONAL

- Additional DOC staff needed to operate on keys
- BGS staff overtime to address failures in off-hours



CB LIVING UNIT PODIUM WHEN SECURE
(all indication lights should be green)

Red = Unsecure (door is unlocked/open)
Green = Secure (door is locked/shut)
Yellow = deadbolt (door is open but locked)

NEW DOOR CONTROL SYSTEM

- Evaluation of locks, control boards/podiums, wiring, intercom systems, pneumatic systems, conduit, etc. underway statewide.
- Multiple options being reviewed, likely touch screen system similar to SSCF.
- Will visit NH facility using proposed system.
- Construction to begin fall 2017:
 - Will require relocation of inmates while work is completed.
 - 4-6 weeks for each living unit wet side.
 - Project estimate includes \$800,000 for DOC operational expenses related to staffing during construction and out-of-state housing.
 - Will maximize the opportunity to get other necessary projects completed while the living units are empty.

Northern State Correctional Facility

Parking Expansion

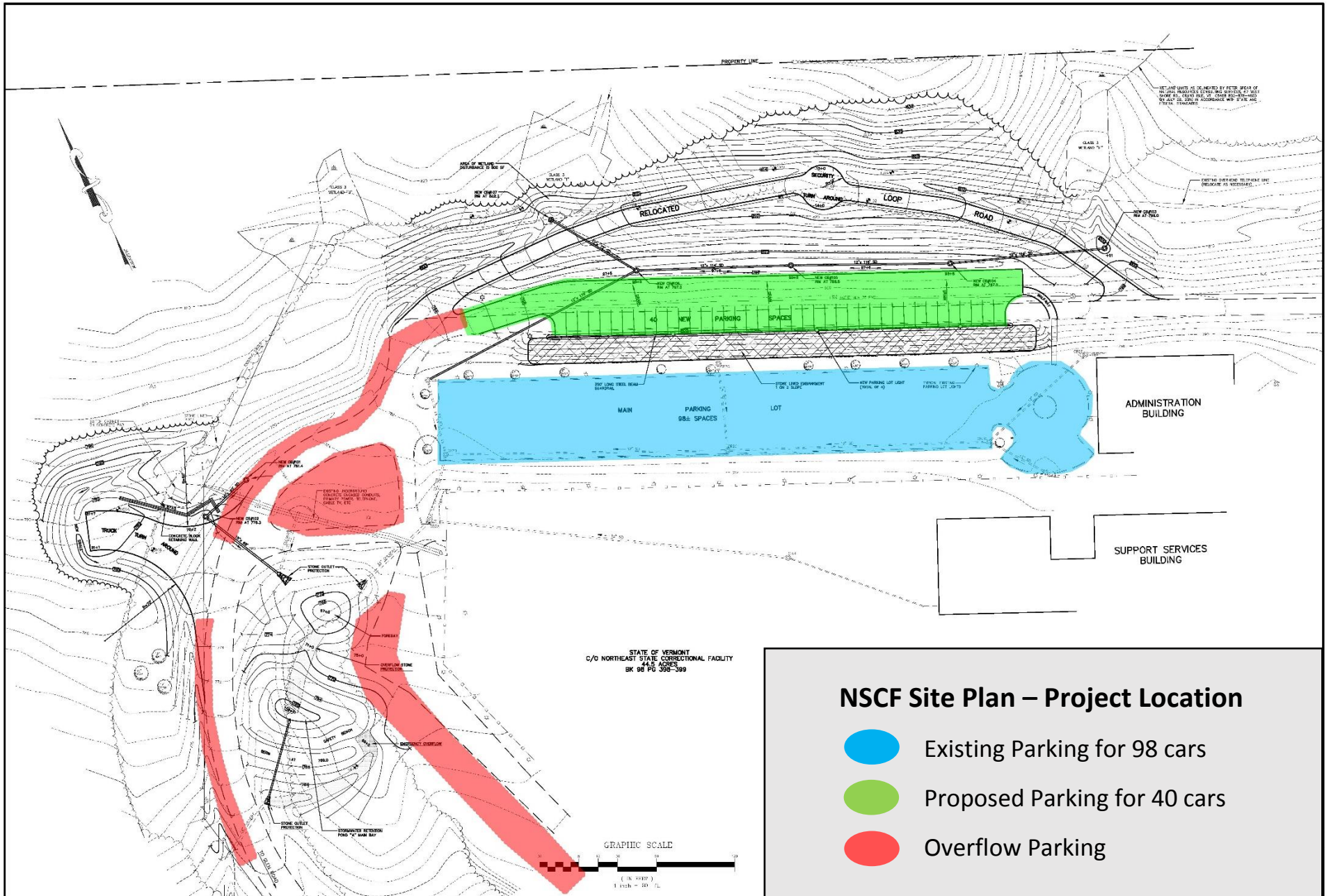
- New 40 space parking lot located along the existing perimeter road.
- Currently in design, reduced significantly from original scope.
- Will utilize existing stormwater pond, constructed in fall 2011 and sized to handle future parking needs.
- New lot will alleviate:
 - Parking Shortage
 - Safety concerns
 - Security concerns
 - Damage to the site



EXISTING PARKING LOT AND PERIMETER ROAD



TYPICAL OVERFLOW PARKING CONDITIONS



NSCF Site Plan – Project Location

- Existing Parking for 98 cars
- Proposed Parking for 40 cars
- Overflow Parking