

# Waterbury State Office Complex

GSF Summary as of January, 2017

## Building Square Footage/Status

### Occupied: 310,115 gsf

- **Public Safety/Forensics**  
45 State Drive  
53,758 DPS  
34,197 Lab  
87,955 gsf occupied
- **Central Plant**  
91 State Drive  
21,160 gsf occupied
- **Agency of Human Services Building**  
280 State Drive  
86,000 (New Office Building)  
115,000 (Historic Core)  
201,000 gsf occupied

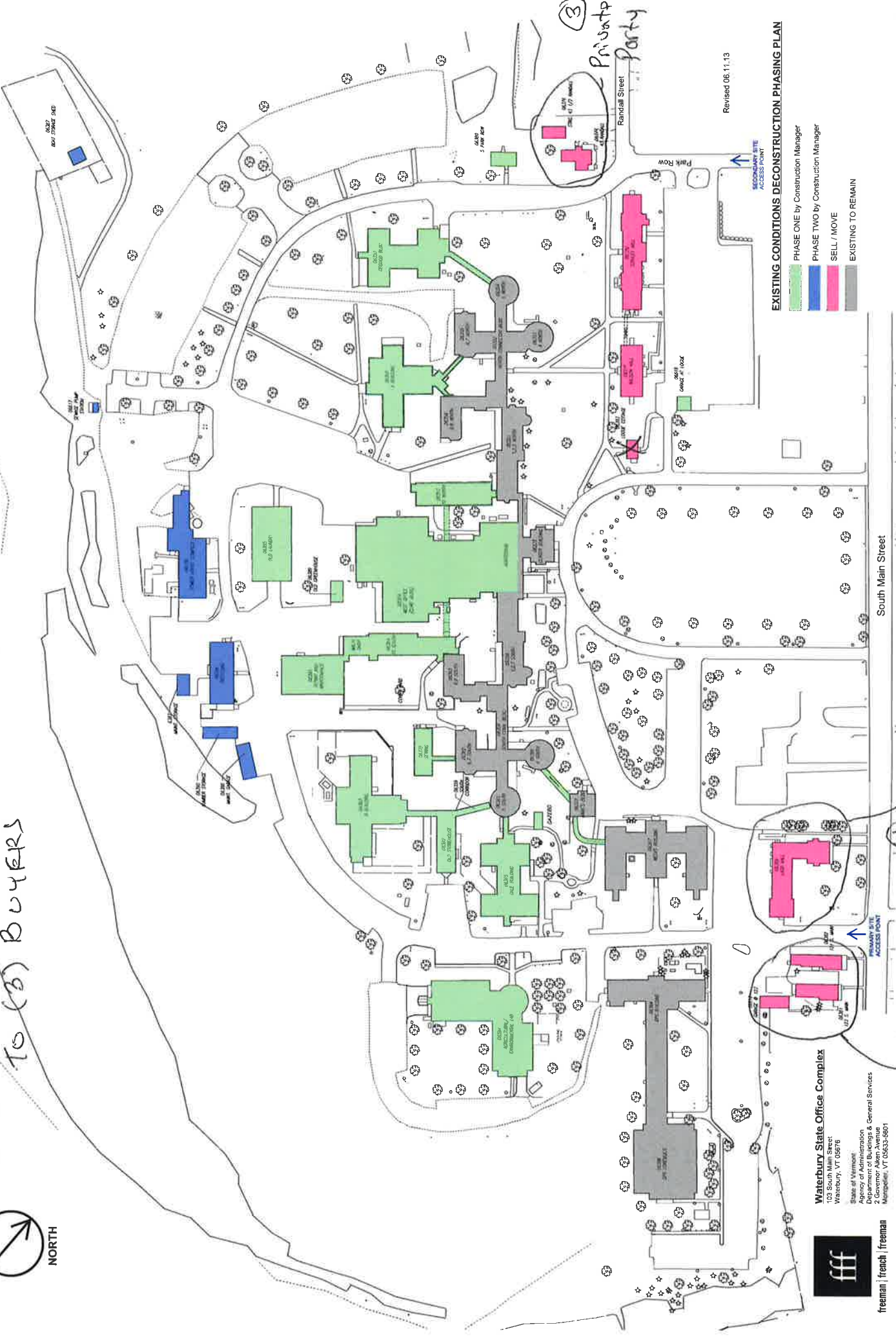
### Unoccupied - In Design: 49,123 gsf

- **Hanks**  
144 Horseshoe Drive  
5,854 unoccupied – in design for generic offices,  
(Building use requested by AHS)
- **Weeks**  
166 Horseshoe Drive  
43,269 unoccupied – in design for generic offices  
(Building use requested by AHS)

### Unoccupied – Fate to be determined: 39,558 gsf

- **Wasson Hall**  
64 Horseshoe Drive  
13,520 unoccupied – hold for future use  
(Has new slate roof, all new windows and  
other improvements done in 2009)
- **Stanley Hall**  
32 Park Row  
26,038 unoccupied -  
Permission to demolish requested

(24) BUILDINGS TORN DOWN  
 (4) BUILDING PROPERTIES SOLD  
 TO (3) BUYERS



Revised 06.11.13

EXISTING CONDITIONS DECONSTRUCTION PHASING PLAN

- PHASE ONE by Construction Manager
- PHASE TWO by Construction Manager
- SELL / MOVE
- EXISTING TO REMAIN

**Waterbury State Office Complex**  
 103 South Main Street  
 Waterbury, VT 05676  
 State of Vermont  
 Agency of Administration  
 Department of Buildings & General Services  
 Monopoli, VT 05633-9401



2013-14

Humper Mm Daycare (1)  
 Downstreet Housing (2)

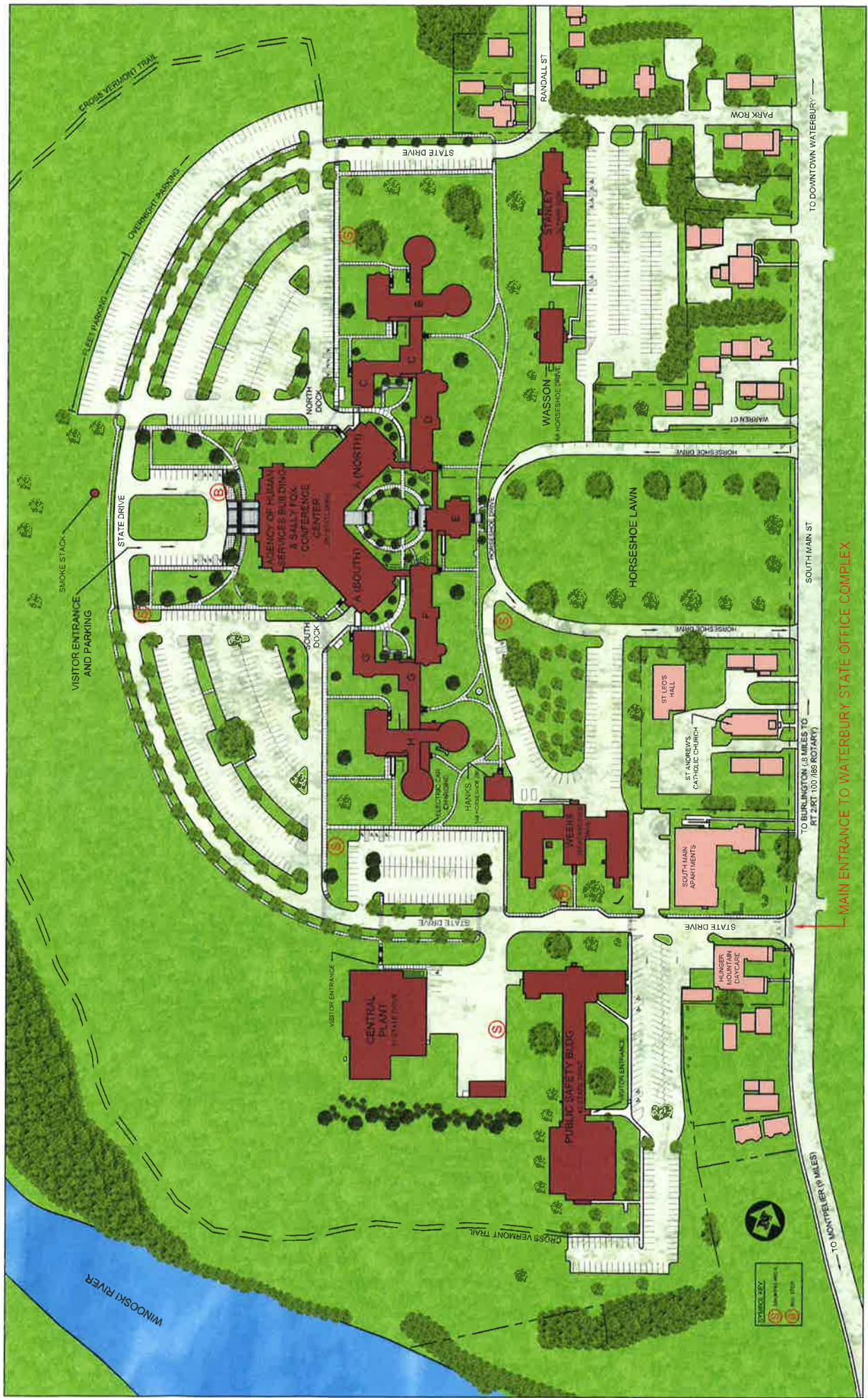




WATERBURY

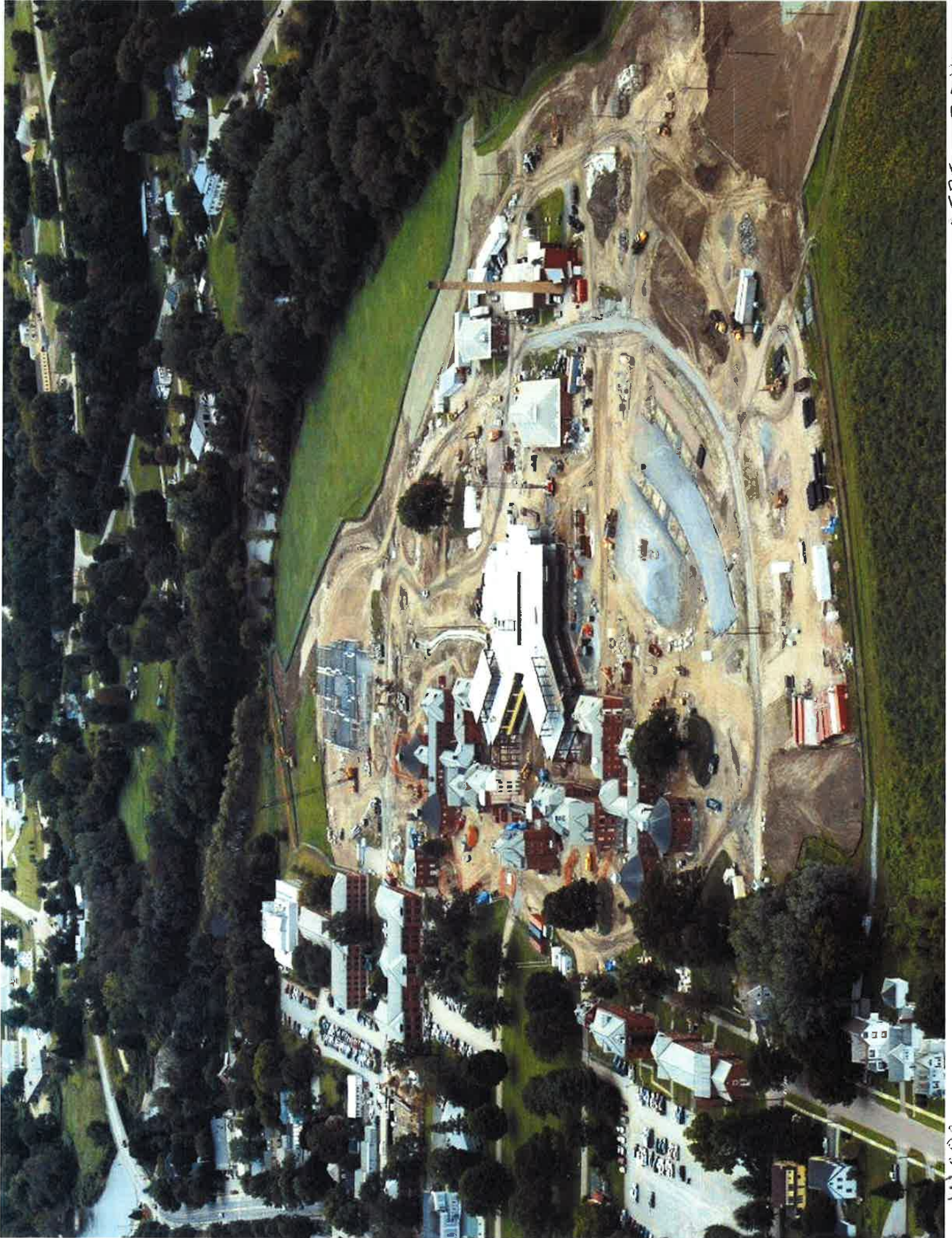
CIRCA 2001





WATERBURY SITE PLAN 2017





SEPT 2014

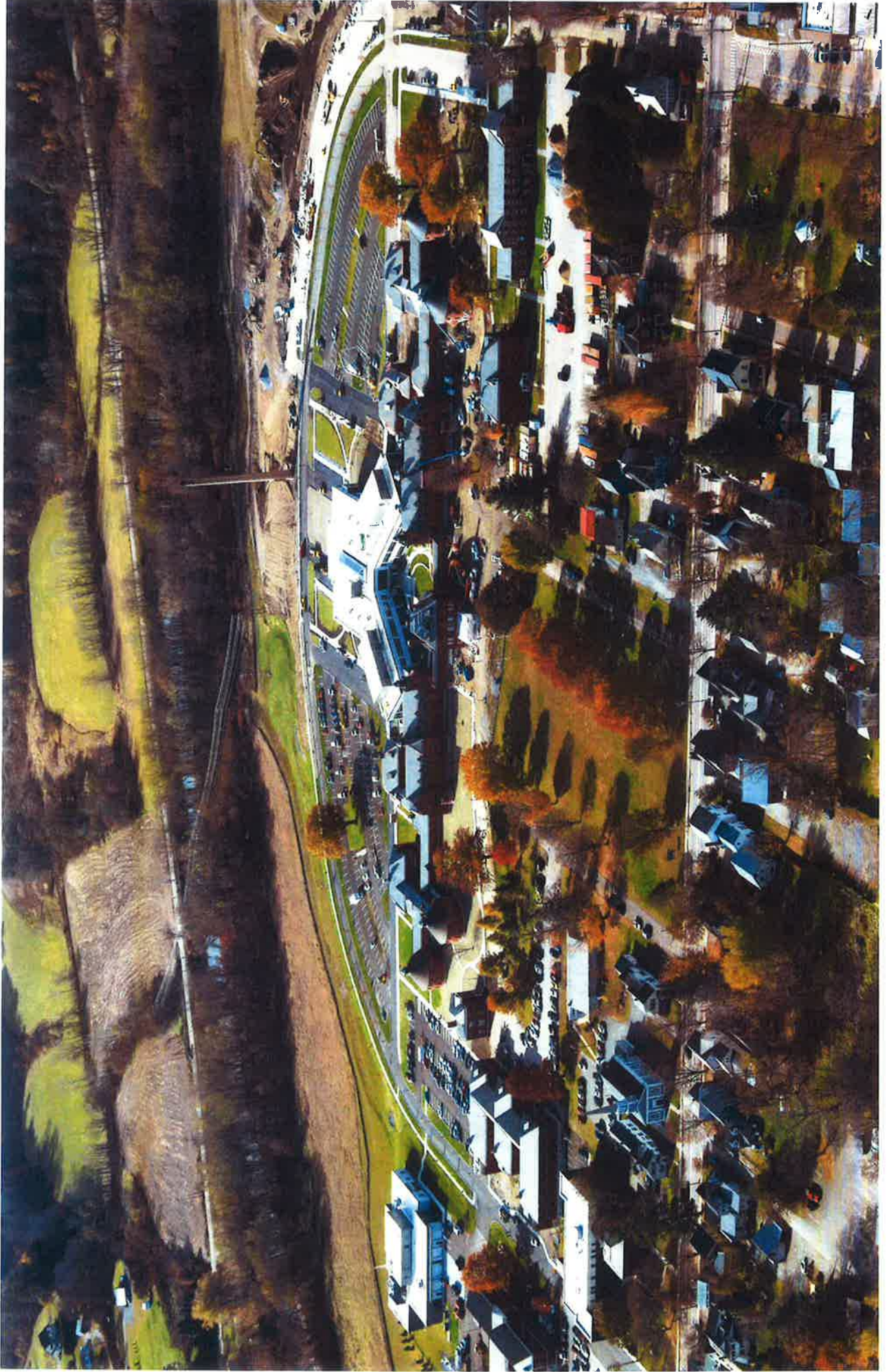
WSOC





Oct 2015





WATERBURY COMPLEX

OCT, 2015