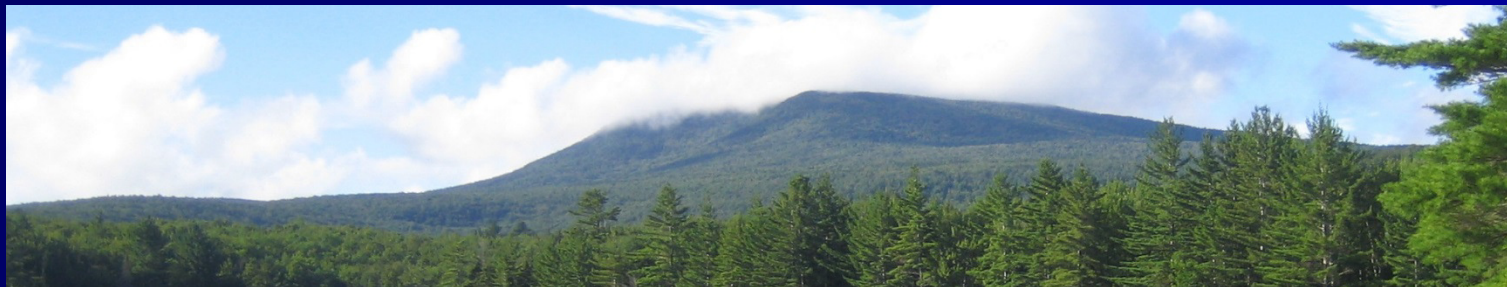


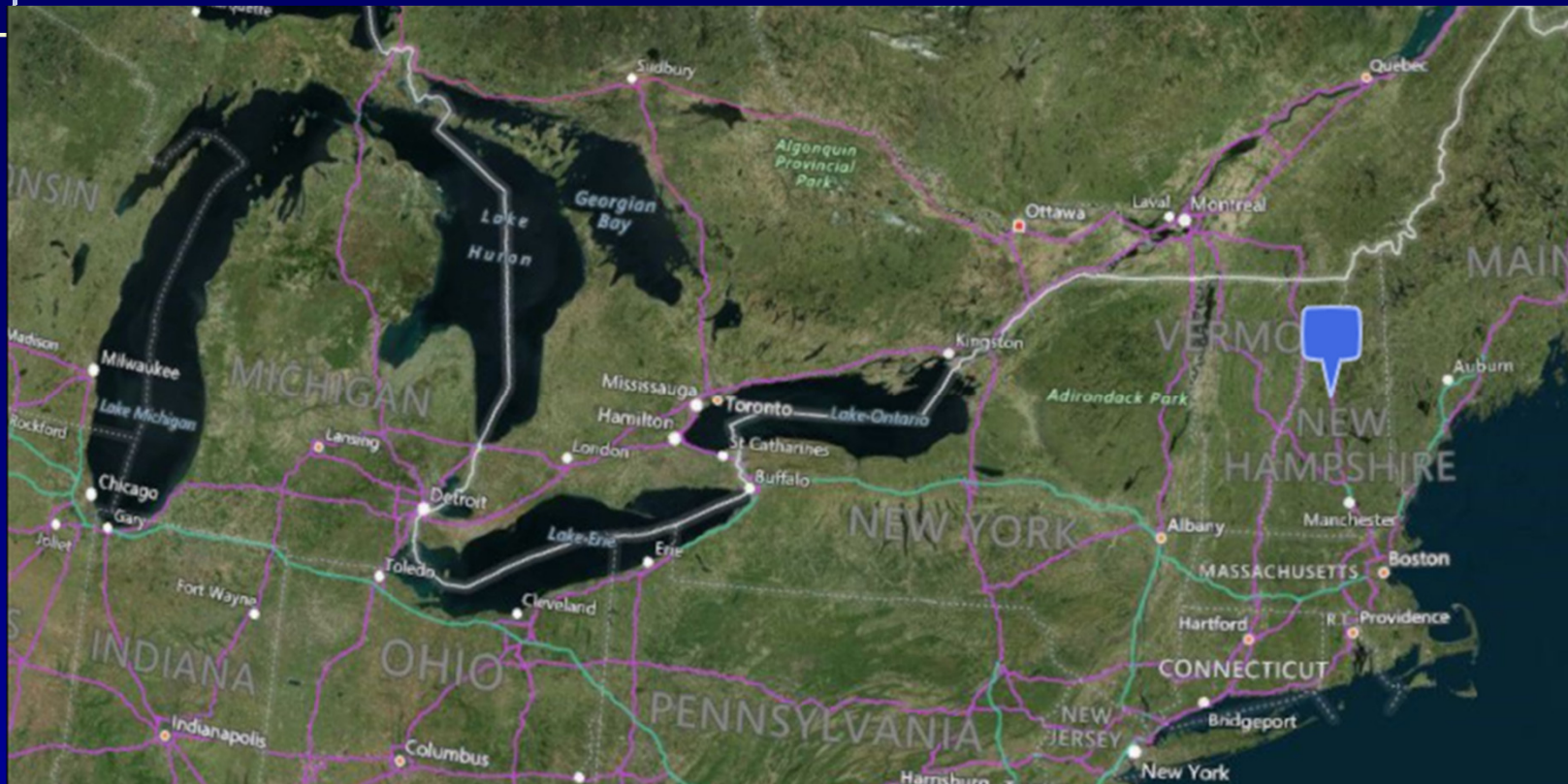


Hubbard Brook

8,000 acres • 1955 • National Science Foundation
Underwater • Natural Resource • forest
Environmental Problem • 80 EFRs

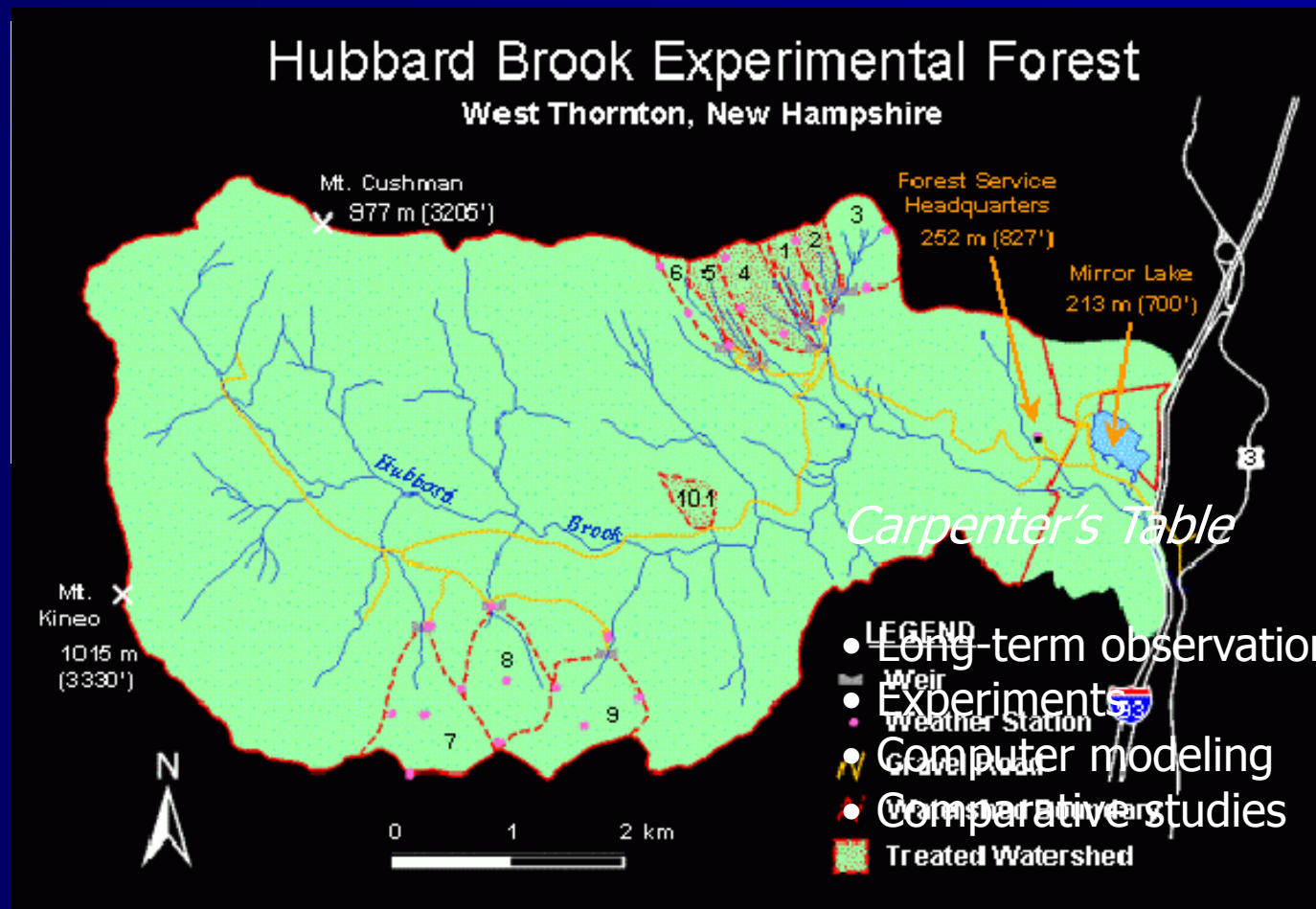


Where Is Hubbard Brook?

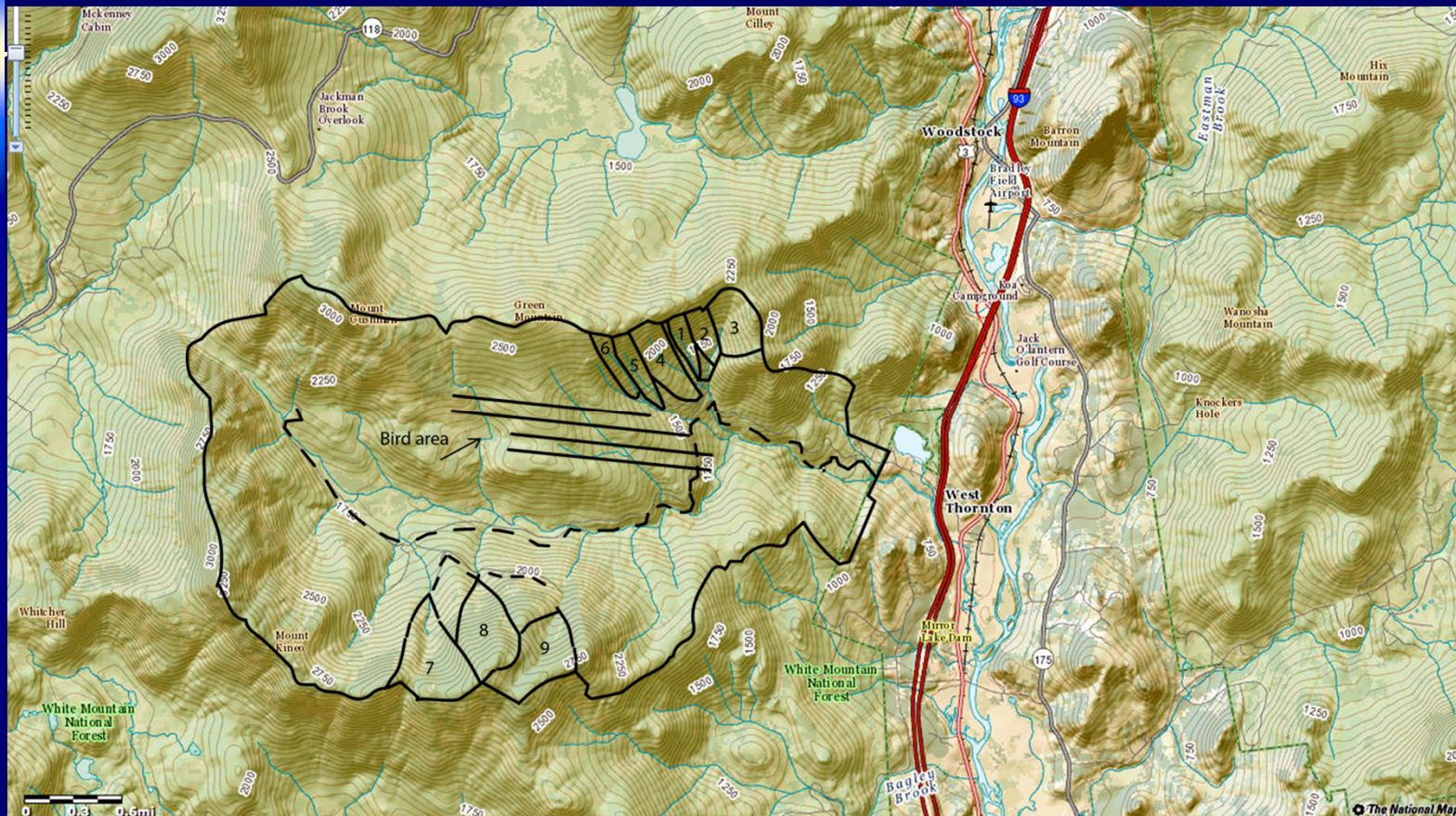


In the White Mountains, 90 miles SE of us

World's Largest Petri Dish



Small Watershed Approach

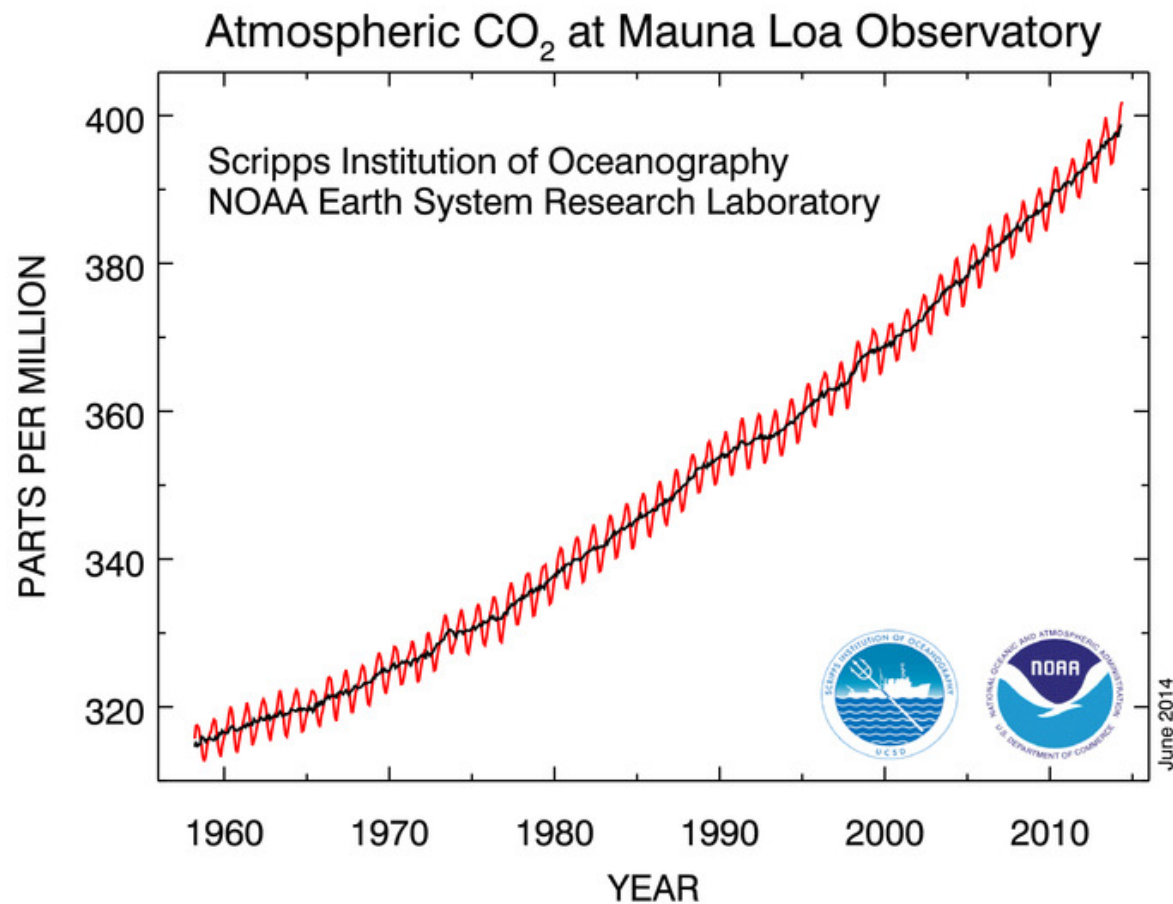


9 gaged watersheds • 3 controls
weather stations + weirs

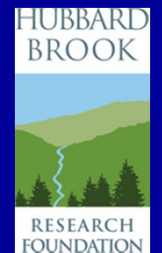
Manifold Measurements



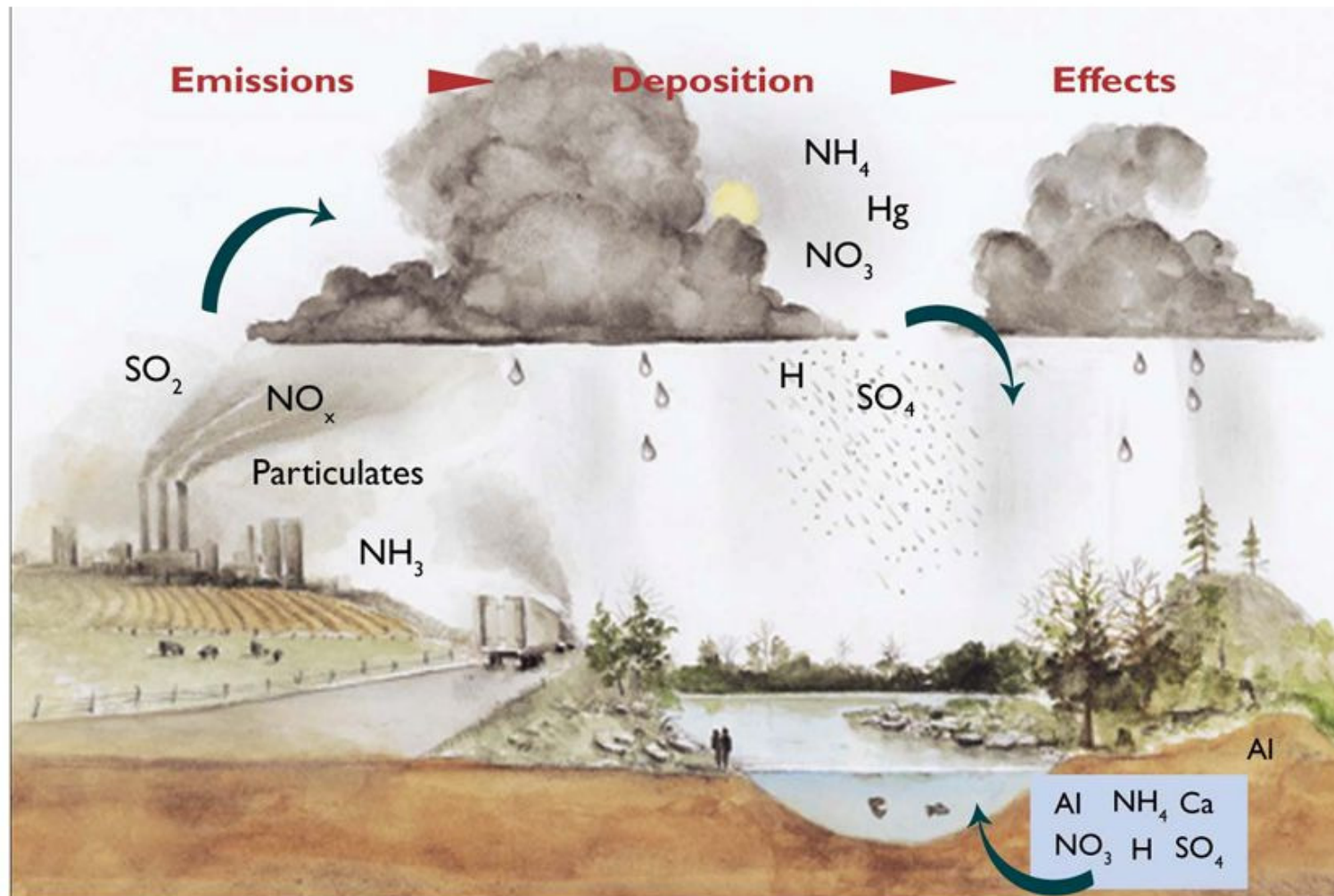
The Keeling Curve



People Power

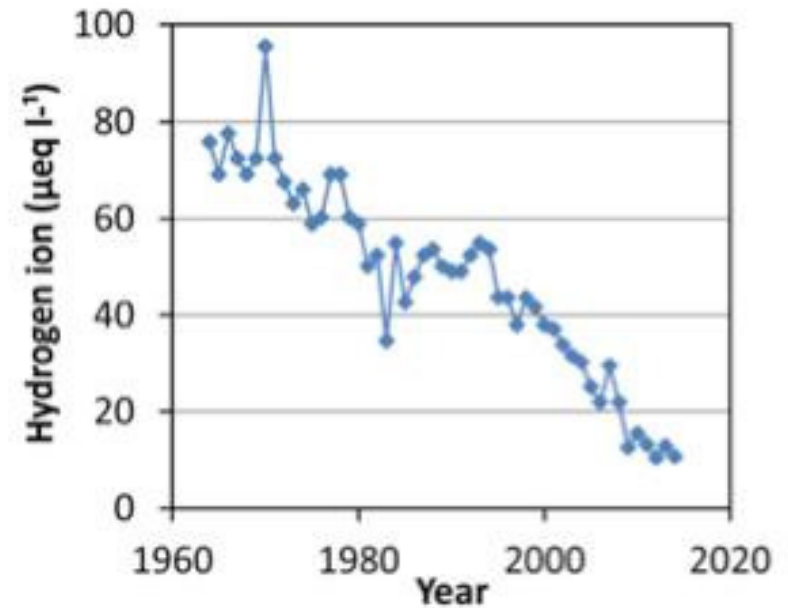


From emissions to acid deposition:



From *Acid Rain Revisited*, pg. 4

Key Discoveries



Acidity of precip. at HB has decreased by 80% since 1970

Key Discoveries



Restoring soil calcium reverses forest decline.

Key Discoveries



- Clear-fell, whole-tree harvest, strip cut
- Impact on stream flow, stream temperature, stream nutrient concentrations
- Downstream water quality

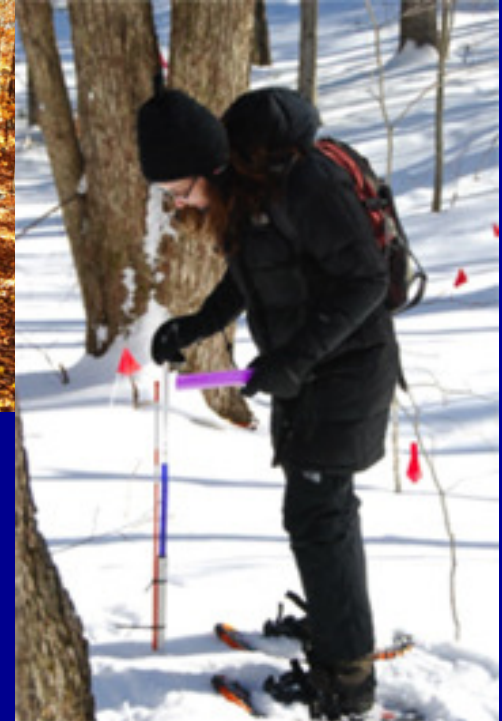


New Research



C/F WD • susceptibility to pests / pathogens
water quality • wildlife • resilience • models

New Research



Climate Change and Soil Warming

Challenges Ahead



Environmental Literacy



Global Partnerships



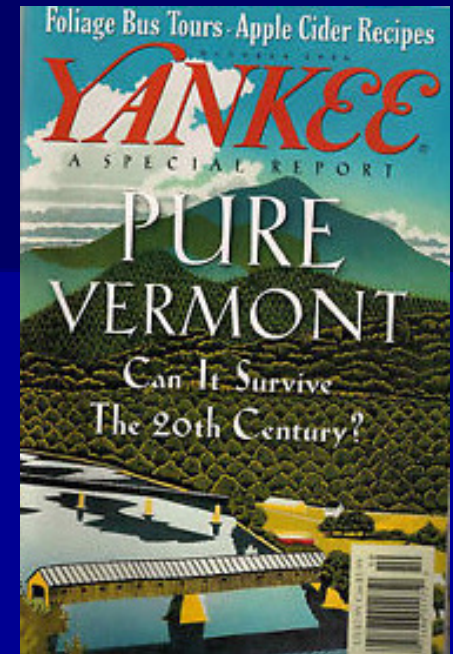
Linking Science with Society



- Dairy Farmers
- Food Producers
- Emergency Managers
- Electric Utilities



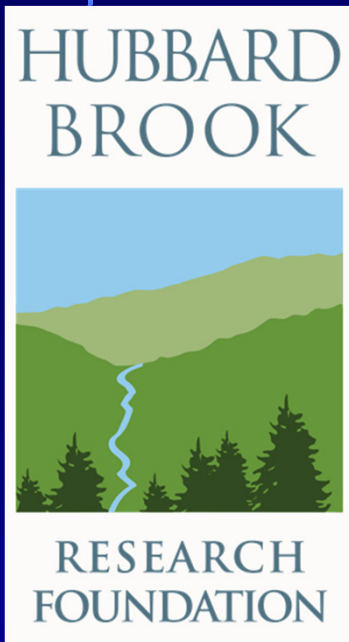
Ecosystem Services





Cheers!

Contact Information



Anthea Lavalley, Executive Director
Hubbard Brook Research Foundation
30 Pleasant Street
Woodstock, VT 05091

(802) 432-1042

alavalley@hubbardbrookfoundation.org