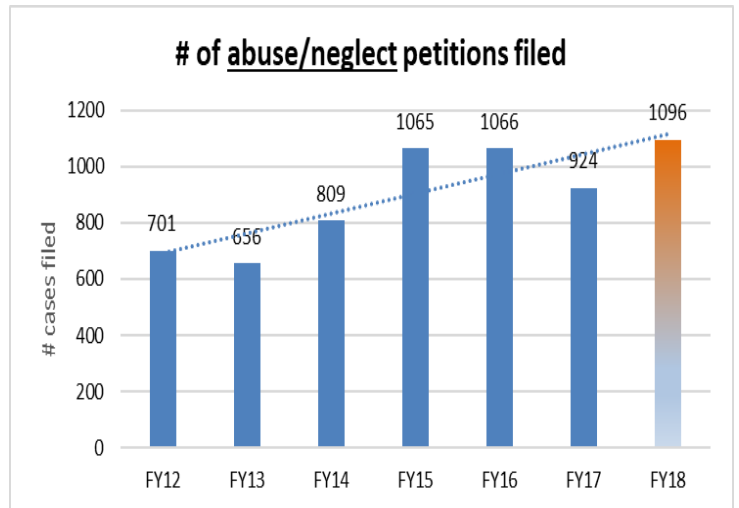
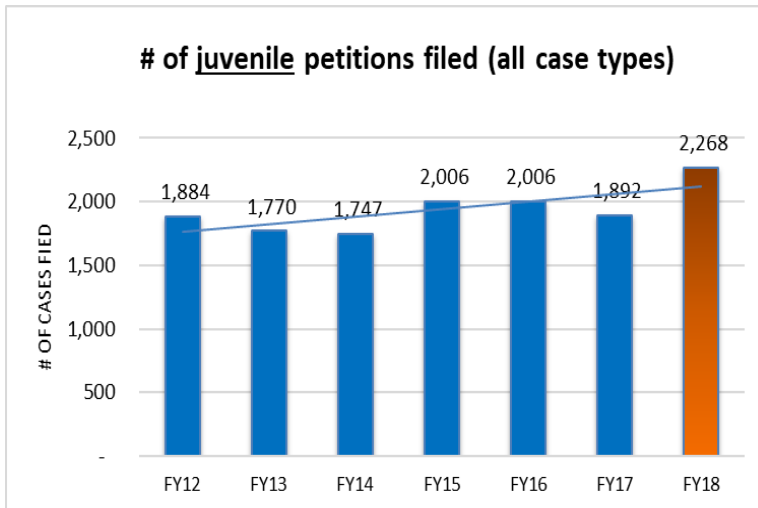


FY18 JUVENILE CASES

I. JUVENILE CASES ADDED (multiple years)

	FY12	FY13	FY14	FY15	FY16	FY17	FY18
CHINS-Abused or Neglected	701	656	809	1,065	1,066	924	1,096
CHINS-Truant	117	135	123	112	137	166	180
CHINS-Unmanageable	93	91	93	84	85	65	76
Delinquency	894	816	668	703	735	704	883
Youthful Offender	79	72	54	42	43	33	33
Total	1,884	1,770	1,747	2,006	2,066	1,892	2,268

The portion of abuse/neglect cases relative to all juvenile case types increased from 30% in FY10 to 53% in FY15, 52% FY16, & 48% in Fys 17 & 18)



II. CUSTODY OF CHILDREN; CASES ADDED IN CURRENT FY (custody pre-disposition)

FY18	DCF custody	Custody to "Other"	no DCF custody	Total # cases
CHINS-Abused or Neglected	530	93	473	1,096
CHINS-Truant	1	1	178	180
CHINS-Unmanageable	55	2	19	76
Delinquency	71	1	811	883
Youthful Offender	3	0	30	33
Total	660	97	1,511	2,268

Cases w/ young children who are removed from the home are more likely to go to TPR

48% of ab/neglect cases in DCF custody
(It was 50% in FY15 & FY16, and 44% in FY17)

III. ABUSE/NEGLECT CASES FILED BY COUNTY

	An	Bn	Ca	Cn	Ex	Fr	Gl	Le	Oe	Os	Rd	Wn	Wm	Wr	Total
FY16	64	58	49	194	9	126	14	21	52	30	75	162	106	106	1066
FY17	69	80	41	193	0	93	0	31	13	30	74	100	108	92	924
FY18	67	81	53	219	9	166	9	30	26	38	83	97	125	93	1096
3 year total	200	219	143	606	18	385	23	82	91	98	232	359	339	291	

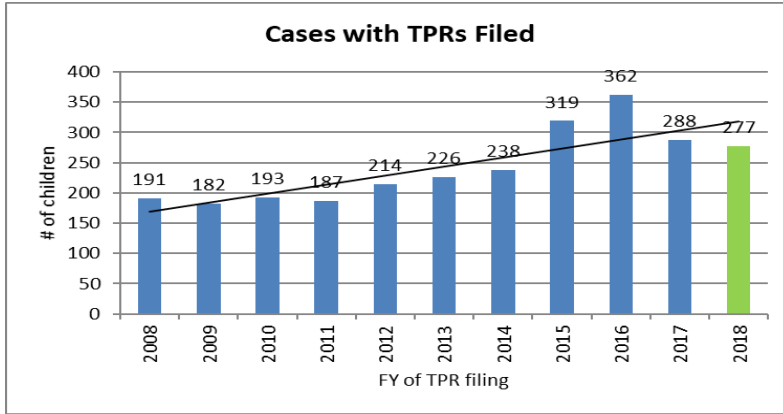
Courts with *more* ab/neglect cases filed in FY18 than in FY17: Ca, Cn, Ex, Fr, Gl, Oe, Os, Rd, Wm

(Significant increase in Franklin)

Little change in: An, Bn, Le, Wn, Wr

TPRs (Termination of Parental Rights)

IV. TPRs FILED OVER TIME



TPRs are typically filed a year into a case.

Contested TPRs place heavy demands on judicial resources. Courts are hard pressed to find time for multiple-day contested TPRs, which also require "findings" time for the judge.

source: TPR Trends report.xls

V. 277 cases with TPR filed in FY 18:

Addison	18
Bennington	16
Caledonia	16
Chittenden	43
Essex	1
Franklin	40
Grand Isle	3
Lamoille	5
Orange	8
Orleans	6
Rutland	21
Washington	28
Windham	38
Windsor	34

113 Cases with TPRs pending (at the close of FY18):

Addison	1
Bennington	0
Caledonia	1
Chittenden	33
Essex	0
Franklin	7
Grand Isle	0
Lamoille	0
Orange	2
Orleans	1
Rutland	15
Washington	16
Windham	23
Windsor	14

(count is by docket #, not TPR motion)

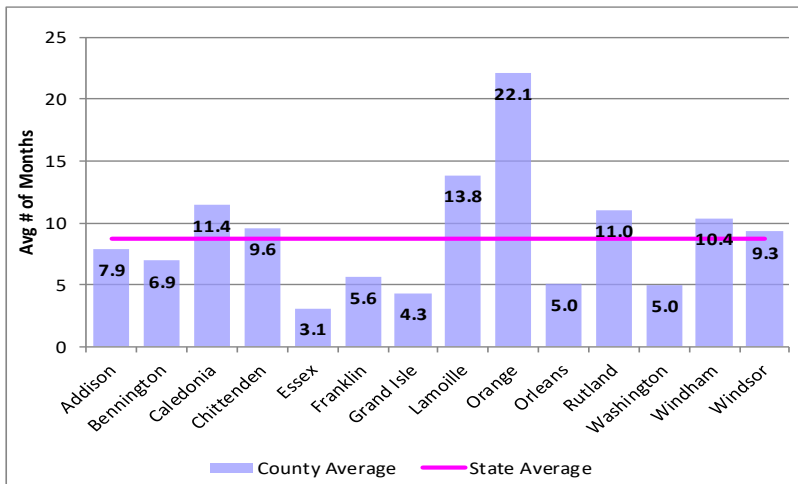
TPRs Pending:

At the close of FY18, 50% of the pending TPRs had been pending for 5 or more months, similar to FY17.

There were 113 TPRs pending at the close of FY18, compared to 135 in FY17.

Franklin continued to keep its pending TPR numbers down, and at the end of FY18, had no TPRs pending more than 5 mo.

VI. TIMELINESS OF TPRs DECIDED THIS FY



statewide avg: 8.7 months

Goal: 5 months

count is docket #s (children)

County	# of Cases with TPRs Decided	(This measures the average time from 1st TPR filed to last TPR decided per child)
Addison	22	
Bennington	18	
Caledonia	21	
Chittenden	49	
Essex	1	
Franklin	40	
Grand Isle	3	
Lamoille	3	
Orange	2	
Orleans	7	
Rutland	24	
Washington	23	
Windham	45	
Windsor	41	
Grand Total	299	

The 11 year avg time for TPR decision was 7.6 months

In FY17, the statewide avg was 9 months for 382 TPRs decided (compared to 8.4 mo. in FY16).