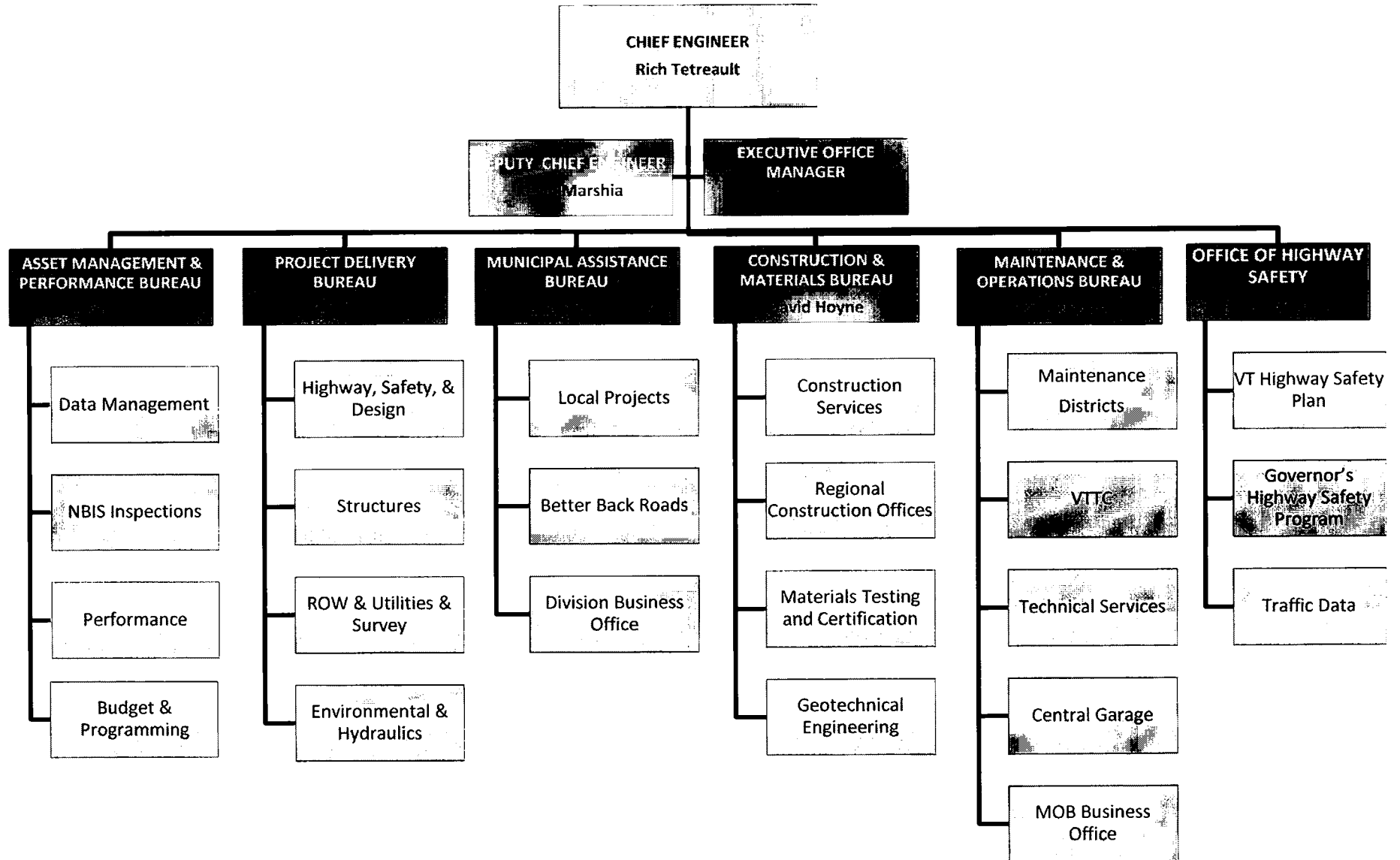


Highway Division



Who To Call



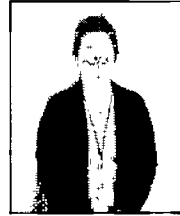
Rich Tetreault
Director/Chief Engineer
828-2663



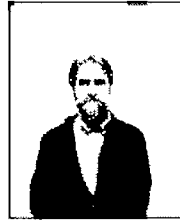
Kevin Marshia
Deputy Director/Deputy Chief
Engineer
828-2932 or 828-2663



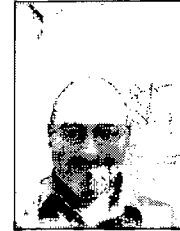
Chad Allen, AMP
828-0768 or 828-2621



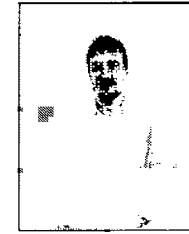
Susan Scribner, MAB
828-3588



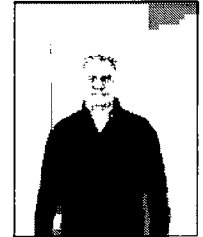
David Hoyne, CMB
828-2595



Scott Rogers, MOB
828-2709



Ken Robie, PDB
828-2645



Bruce Nyquist, OHS
828-2696

- Performance tracking
- Risk Management
- Bridge Inspections & load ratings
- Programming of Maintenance and Capital Improvements
- Data collection or asset inventory
- Data management
- Coordinate and monitor agency budget

- Mutually managed Local Projects - Assist communities with developing projects and providing technical assistance
 - Better Backroads Program
 - Bicycle & Pedestrian Program
 - Transportation Alternatives Program
 - Municipal Park and Ride Program
 - Projects within Roadway, Safety and Traffic Ops, Town Highway Bridge and State Highway Bridge Programs
 - Municipal Mitigation Program
- Park and Ride Program
- Rest Area Program
- Business Office
 - Processing of consultant and contractor payments
 - Division administrative budget

- ACTIVE Construction Project information
- Materials Sampling and Testing
- Geotechnical information
 - Borings
 - Rock Falls
 - Slope Stability

- Maintenance Districts
- Central Garage (Agency fleet of vehicles and equipment)
- VTrans Training Center
 - Employee Development
 - Vermont Local Roads
 - Health and Safety
- Town Highway Bridge and Culvert grants
- Emergency management
- Transportation Systems management and operations (TSMO)
 - Intelligent Trans Systems (ITS)
 - Traffic Operations
 - Traffic Research
 - Transportation Operations Center (ToC)
- Environmental Services
- Hazardous Materials
- Engineering Support
- Bridge Crew
- District paving Program

- Highway Safety & Design – Pavement Design, Traffic Design, Roadway Design
- Structures – Bridge Design
- Right-of-Way, Utilities & Survey – Property Acquisition, Property Management, Utility Coordination, Survey
- Environmental – Archaeology, Historic, Biological, Stormwater, Landscaping
- Development of Capital Program projects
 - Scoping
 - Project Definition
 - Environmental Permitting
 - Property Acquisition
 - Design
- Technical Assistance to others (State & Municipal) in our areas of expertise.

- Governor's Highway Safety Program
- Highway Safety Improvement Program
- Vermont Highway Safety Alliance
- Highway Safety Data Unit