



VT State Highway On-Road Bicycle Facilities Plan

Senate Transportation Committee – February 10, 2015

Joe Segale, VTrans Policy, Planning & Research Director
Amy Bell, VTrans Planning Coordinator

19 V.S.A. § 2310. Pavement of highway shoulders

The Vermont Agency of Transportation is required by statute to accommodate bikes and pedestrians on major state highways (19 V.S.A. § 2310)

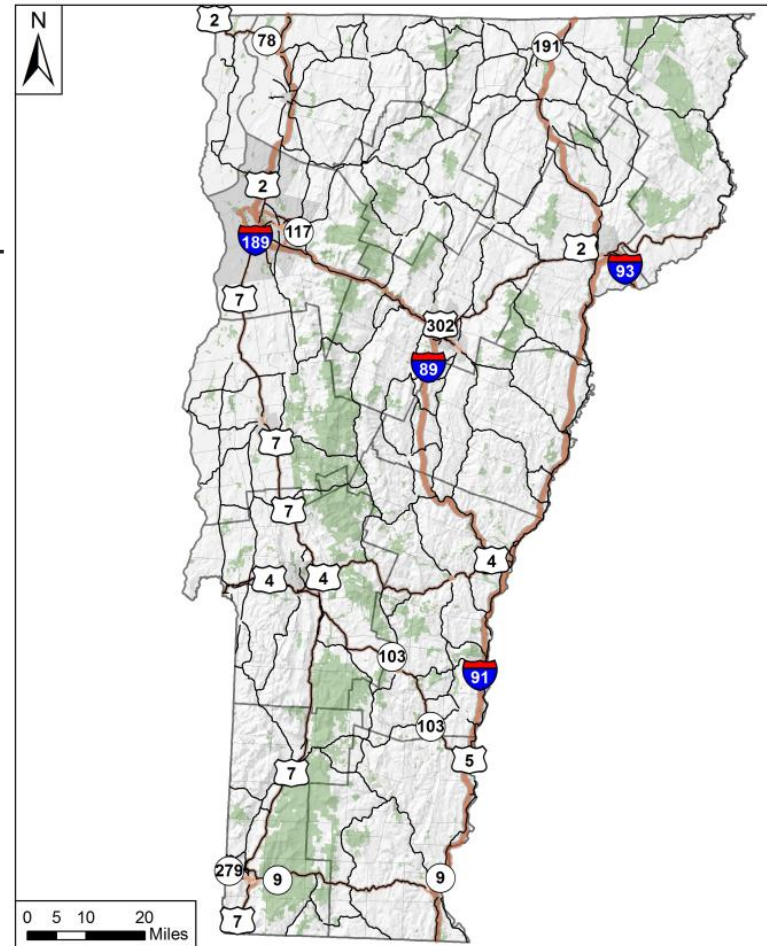
- The state must provide paved shoulders on major state highways with the intent to develop an integrated bicycle route system and make the shoulders safer for pedestrian traffic
- Any construction, or reconstruction, including upgrading and resurfacing projects on these highways, shall maintain or improve existing access and road surface conditions for bicycles and pedestrians along the shoulders of these highways
- Shoulder widening is not necessary if the agency deems it to be cost-prohibitive.



Project Purpose

Overall Project Goal: Develop a comprehensive improvement plan that identifies opportunities to enhance bicycle accommodations on the highest-ranked bicycle corridors on the State highway system.

- **Phase I (current phase):** Classify the state highway system into three or four bicycle route tiers based on their location, connectivity, and desirability.
- **Phase II:** Identify critical infrastructure deficiencies and gaps in the top-tier bicycle corridors.
- **Phase III:** Identify specific improvements (e.g., signage, striping, widening, etc.) to address the identified gaps in the top-tier bicycle corridors.



Steering Committee

This project relies on input from a diverse group of stakeholders. To ensure we are planning around the needs of ALL cyclists, our steering committee represents many interests.

EXTERNAL

- Rutland Regional Planning Commission
- Northeastern Vermont Development Association
- Tourism & Marketing
- Agency of Commerce & Community Development
- Vermont Bicycle and Pedestrian Coalition
- VBT Bicycling & Walking Vacations
- Green Mountain Bicycle Club
- American Council of Engineering Consultants

VTrans

- Policy & Planning
- Bicycle and Pedestrian
- Operations & Maintenance
- Paving & Roadway
- Asset Management

Consultants

- RSG
- Alta Planning & Design
- Local Motion

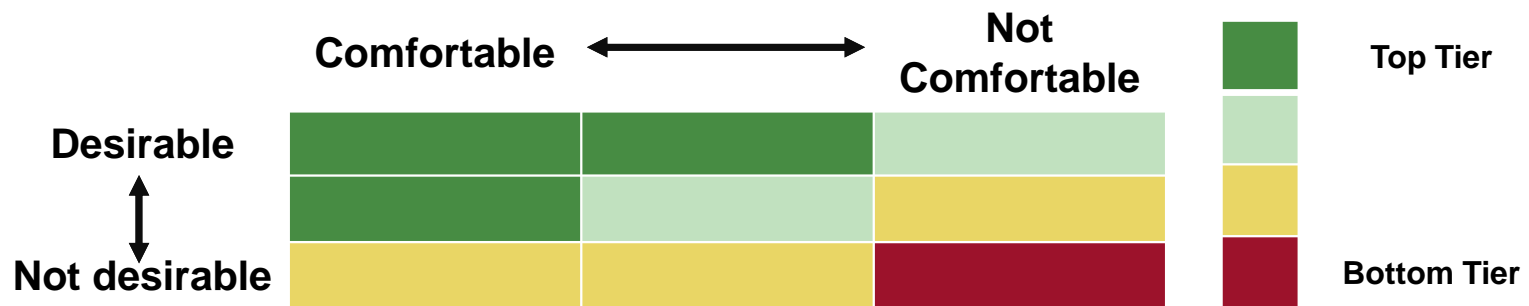


Approach to categorizing roads for on-road biking

Phase I will categorize state roads into categories or tiers based on:

“**Desirability**” – Where do Vermonters and visitors want to ride bikes; and

“**Suitability**” – Condition and safety of a roadway for bicycling

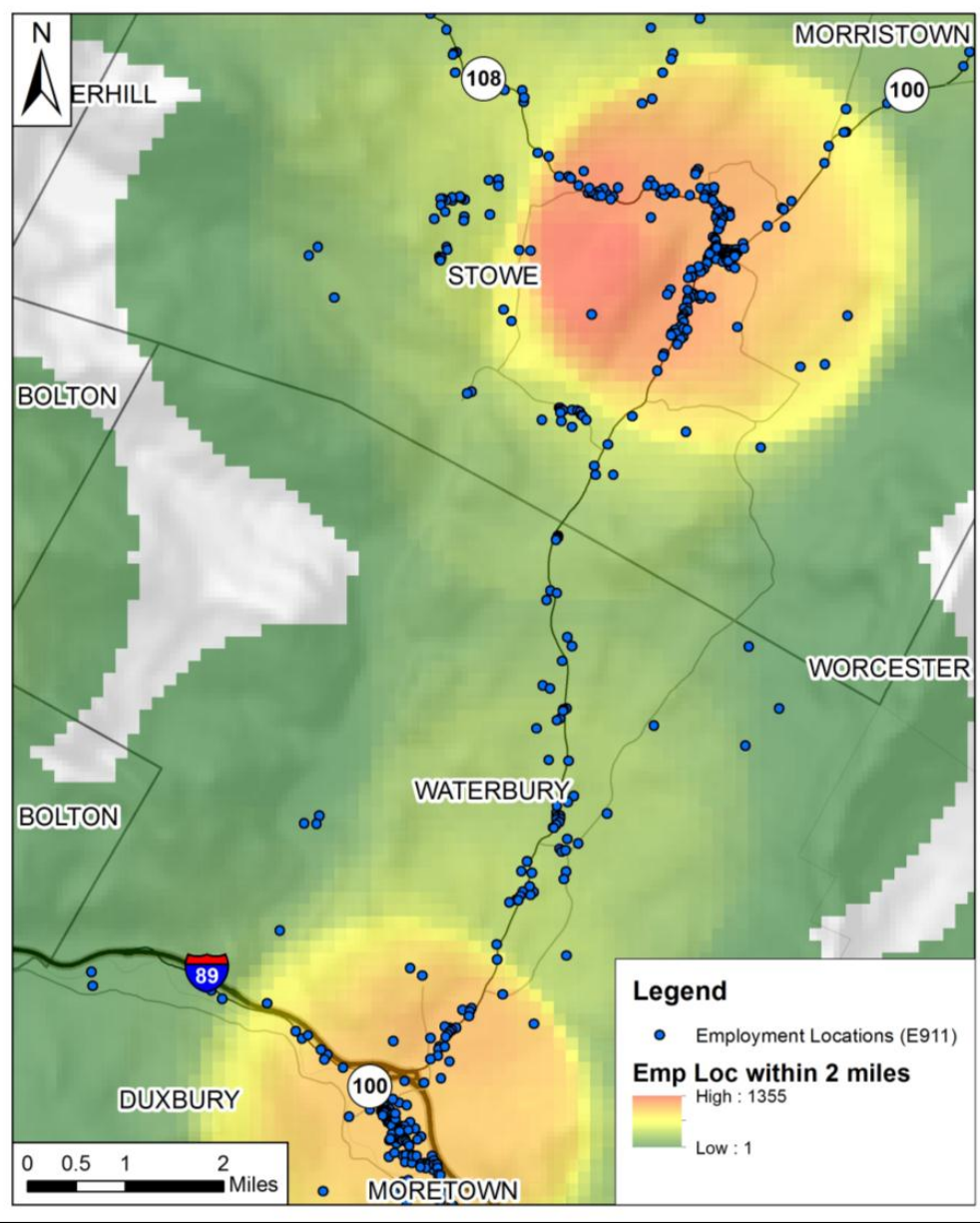


Where do Vermonters want to ride?

Consider destinations within typical trip length
(VT 100 Example)

DESTINATION TYPES

- Homes
- Employment
- Shopping
- Schools
- Transit
- Libraries
- Trails



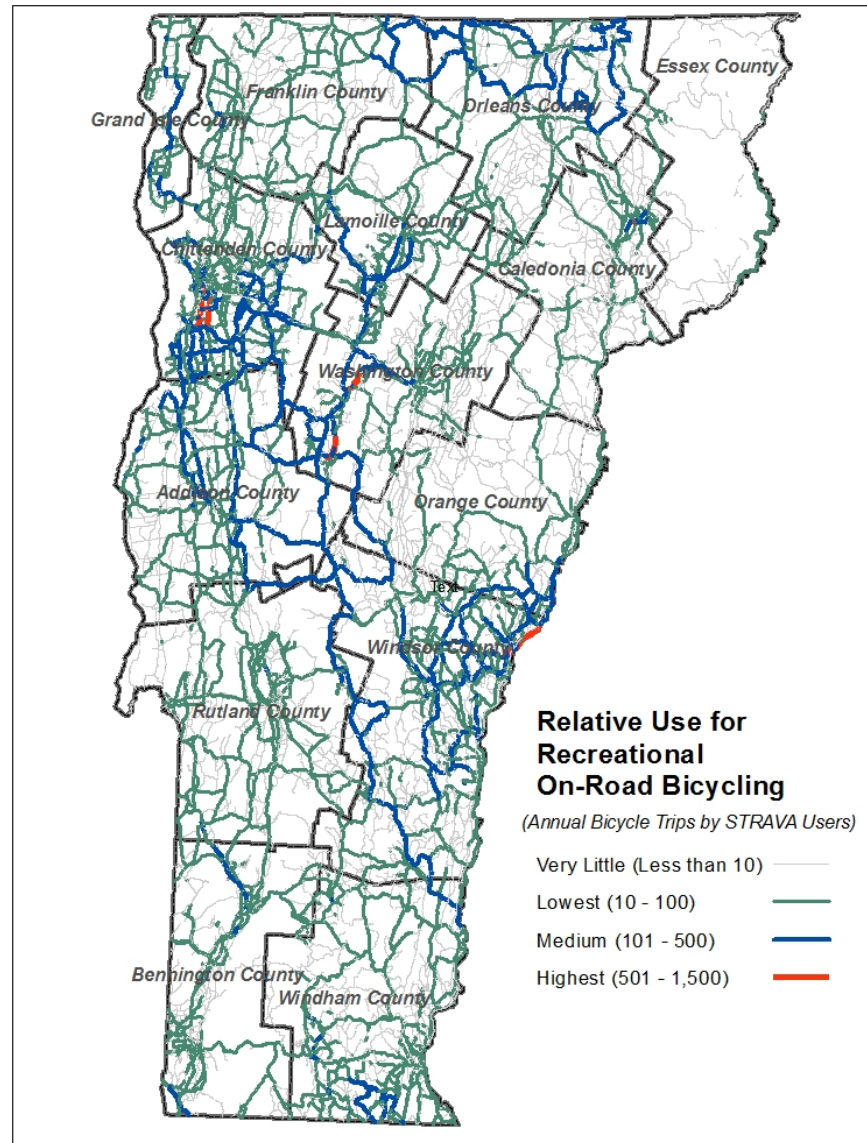
Where do Vermonters want to ride?

Recreational Trips

STRAVA data



Example of One Bike Trip

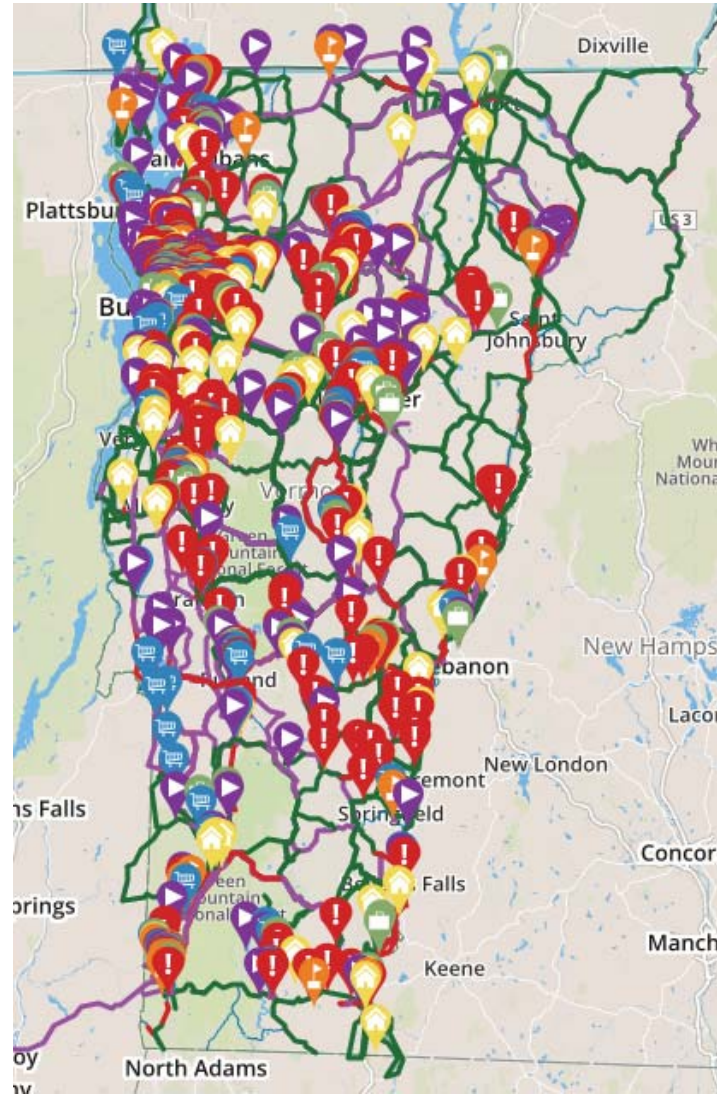


Where do Vermonters want to ride?

Public input: On-line feedback from more than 1,600 people

[WIKI-MAP LINK](#)

- State roadway I like to bike
- State roadway I bike, but could be improved
- State roadway I'd like to use, but needs improvement



Where do Vermonters want to ride?

Public input

(VT 100 Example)

[WIKI-MAP LINK](#)

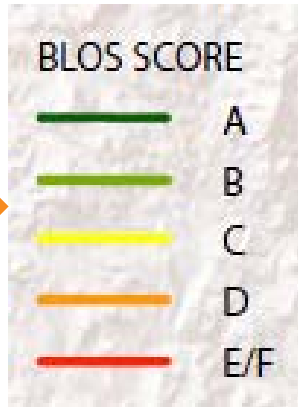


Where would Vermonters be comfortable riding?

Bicycle Level of Service

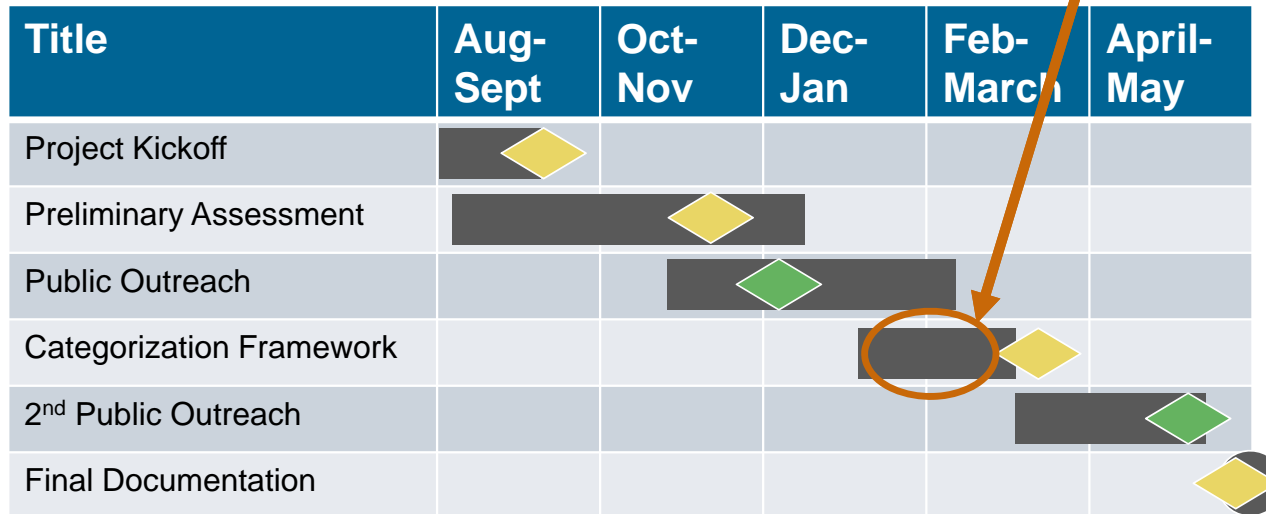
VT 100



Lane width
Shoulder width
Vehicle volume
Percent trucks
Speed
Pavement condition



Phase 1 Project Schedule

We are here



-  Steering Committee Meeting
-  Public Meeting



Project website & email address

you are at: [Home](#) > [Bike Plan](#)

On-Road Bicycle Plan

The Vermont Agency of Transportation (VTrans) is developing an On-Road Bicycle Plan in support of enhancing on-road bicycle improvements on the State highways. The VTrans On-Road Bicycle Plan is a planning effort using public input and roadway characteristics to categorize state highway corridors into several tiers. The tier system will rank the state highway corridors for on-road bicycling based on where bicyclists ride now and where bicyclists want to ride. The Plan will assist VTrans in understanding where to focus limited resources towards bicycle improvements and allow better integration into Agency projects.

Public Input - Interactive WikiMapping Tool

A WikiMapping Tool is being used to collect public input on the primary routes bicycled across the state and obstacles for bicyclists to access preferred destinations. The information we are collecting is focused on the State highway system and segments of town highways functioning as an extension of State highways. Please ensure some portion of the routes drawn on the WikiMap include State roads (shown in blue). Click below to get started.

Public Outreach - Statewide Public Meetings

VTrans will hold two statewide meetings using Vermont Information Technologies (VIT). The public meetings will raise awareness about the project, promote the WikiMapping tool and seek input from attendees on corridor identification and prioritization techniques.

- Project website
 - Main portal for communicating and storing information to share with the public
 - Direct access to project map
 - <http://vtransplanning.vermont.gov/bikeplan>
- Project email:
 - Vermontbike@gmail.com
- 2nd Public Meeting:
 - [April 30, 2015 6:00-8:00 pm](#)