

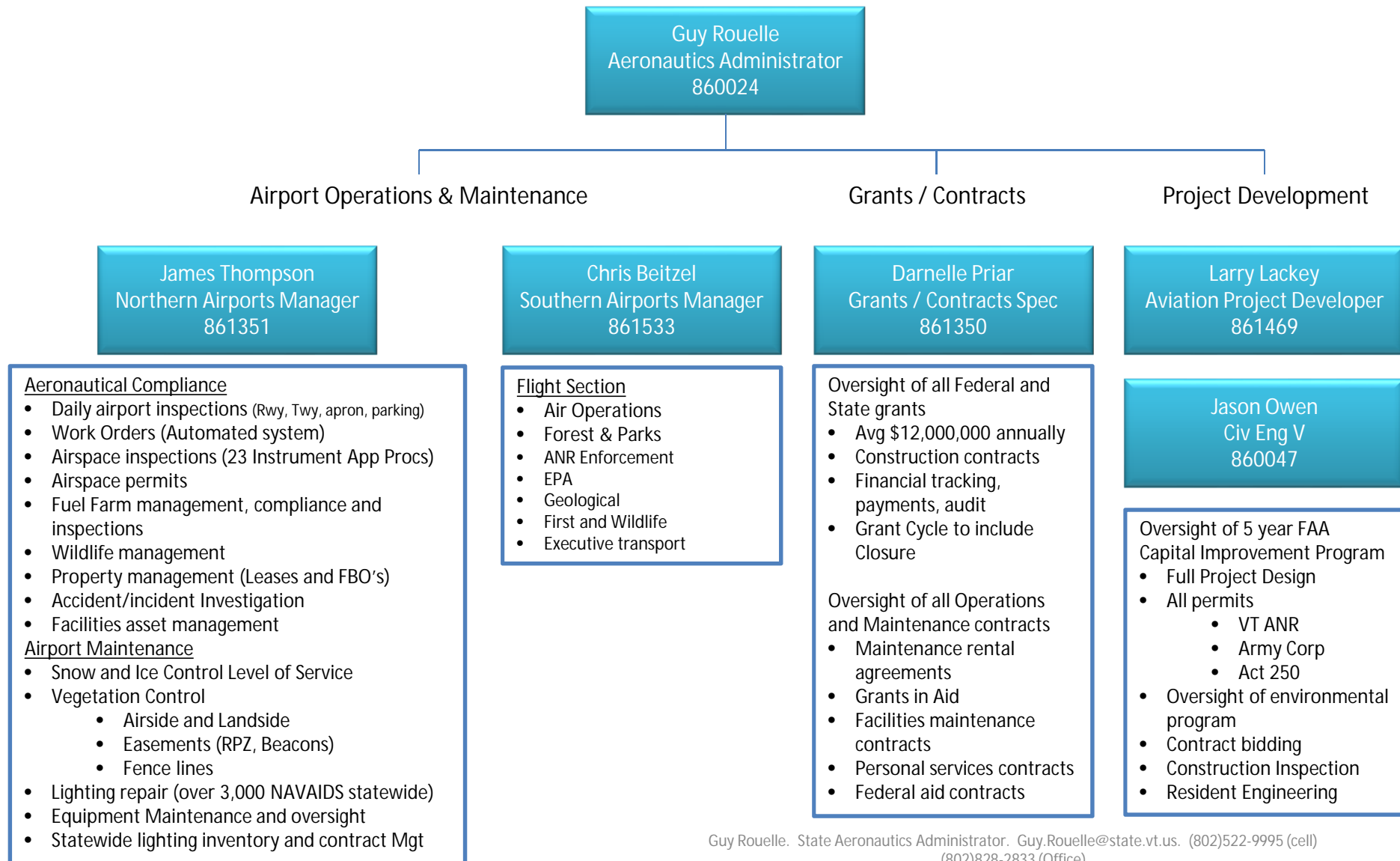


Program Overview
2015 Legislature

Aviation Overview

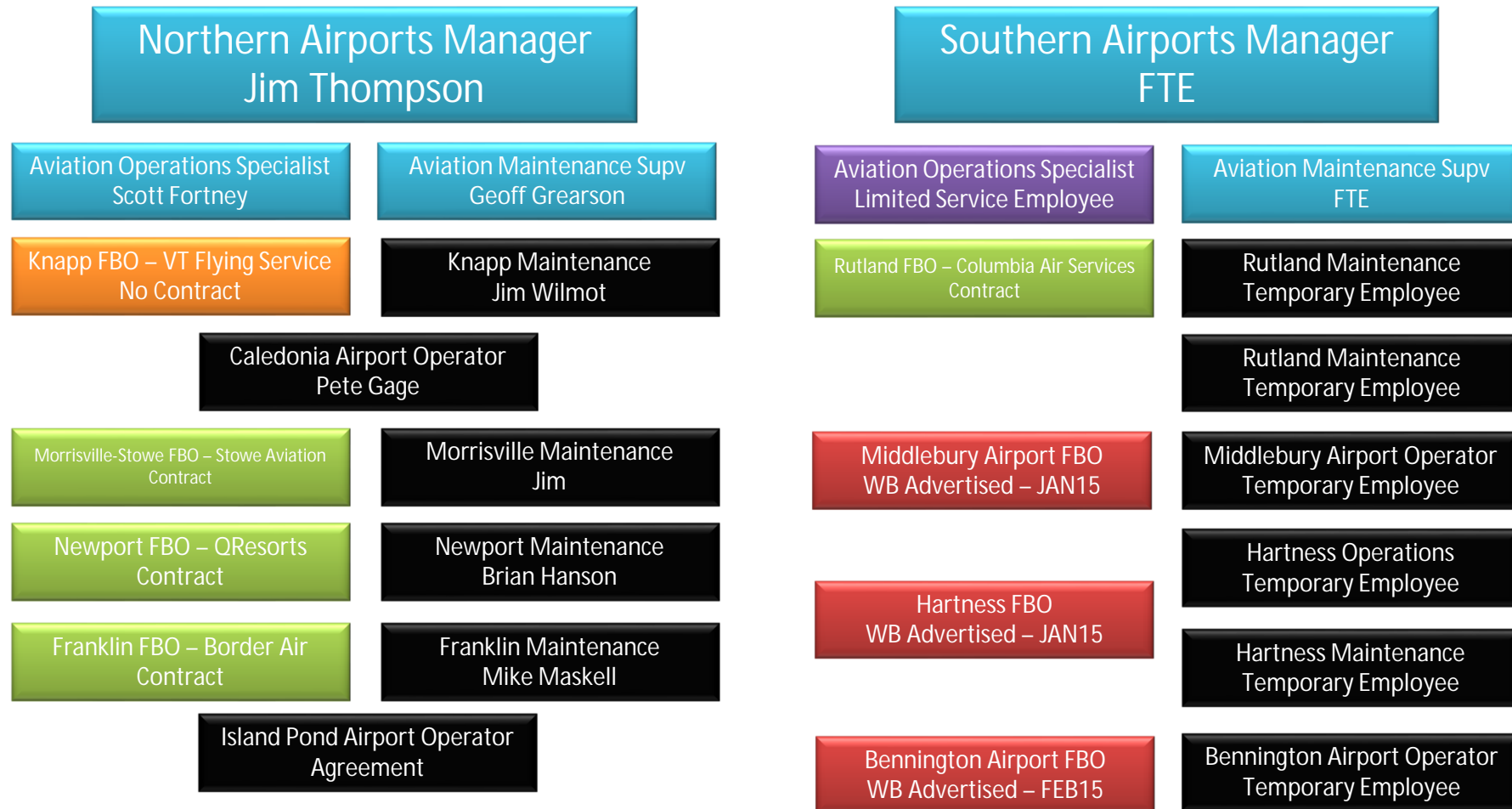
1. Program Staff Overview
2. Assets
3. Highlighted projects
 - a) Rutland
 - b) Newport
 - c) Morrisville
 - d) Middlebury
 - e) Franklin County
4. Calendar Year 2014 Program Review
 - a) Aviation fuel sales
 - b) Direct Jobs
 - c) Cargo
 - d) Enplanements
5. Review FY 2016 budget

Aeronautics Program Staff Overview – Tier 1



Aeronautics Program Staff Overview – Tier 2

Airport Operations and Maintenance





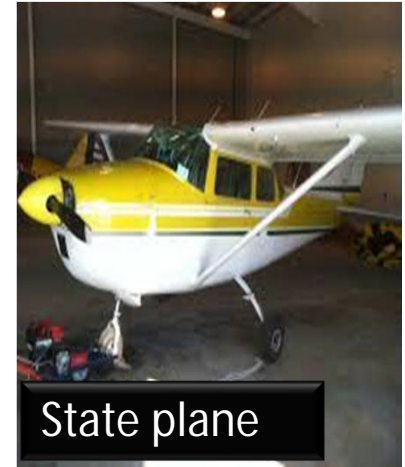
Sweeper



Fuel Farms



AWOS'



State plane

Assets Aviation



Hazard Beacons



Rotating Beacons



Mowers



ARFF



Gates



SRE Buildings



Fencing



Storage Hangars

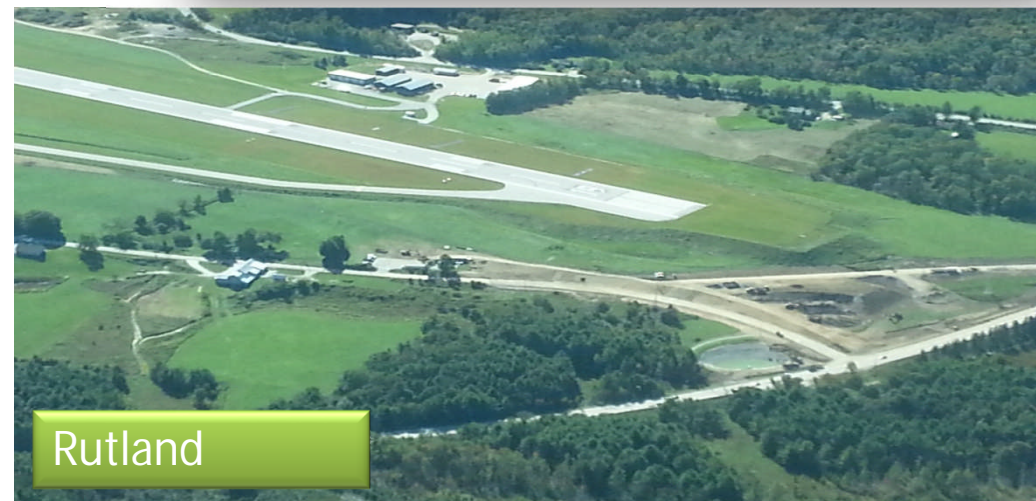


Loader / Blower

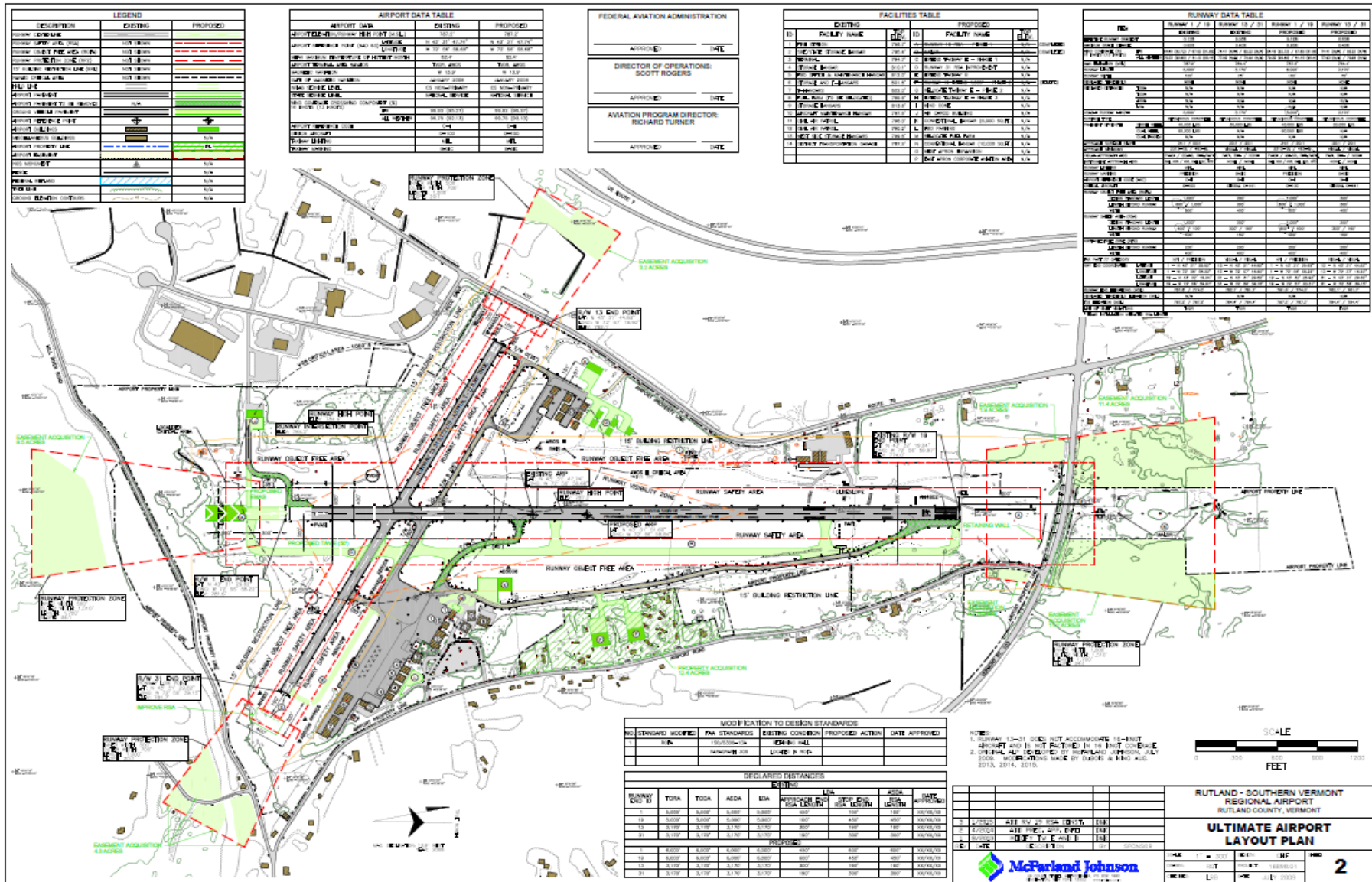
Aeronautics Program Asset Overview

Asset Inventory	
1.	14 Runways & 26 Taxiways (10 airports)
	65 Rwy lane miles, 85 Twy lane miles, 270 Runway Protection Zone Acres
2.	32 Hazard Beacons
	14 mile power line
	253 Power poles
3.	Aircraft and Vehicle parking
	1,700,000 Sq.' Apron
	306 Aircraft tie downs
	206,000 Sq.' Parking Lot
	496 Parking spaces
4.	Fuel Farms
	126,000 gallons storage (Aviation)
	4,700 gallons storage (Equipment)
5.	Security
	45 miles fence line
	23 Automated gates
6.	Facilities (39 Buildings & 5 weather systems)
	9 – Terminals, 6 – AC MX Hangars, 12 – Storage Hangars, 5 weather systems
	1 – House, 1 – ARFF Bldg, 1 – Restaurant, 9 – Snow Removal Equip Bldgs
7.	Equipment
	1 – 1968 Cessna 182, 8 Loaders w/Blower, 10 mowers, 2 Brush hogs

Highlighted Projects



Rutland Southern Vermont Regional Airport Development



Rutland Southern Vermont Regional Airport Development

Phase I & 2 - Airport Rd Relocation & Rwy 19 Safety Area

SEP13 – AUG 2014

Rutland Southern Vermont
Regional Airport - Federally
Funded

1. Phase I - Airport Road Relocation

- Airport Road Resurfacing
- Turning lane
- Signage and lighting
- Airport main parking lot repairs
- FBO parking lot paving



2. Phase II - Runway 19 Safety Area

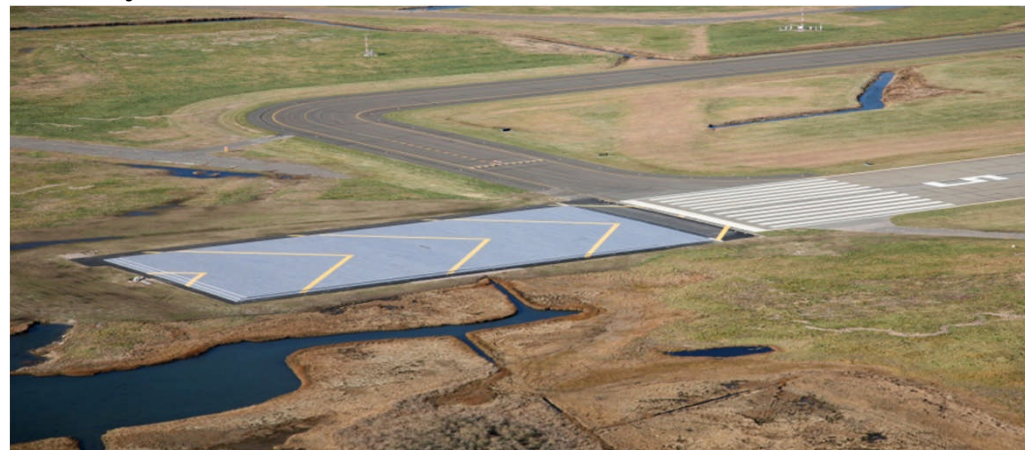
- 200,000 + cu yards of material
- 80' x 300' Retaining wall

3. Phase III - Runway 1 Safety Area with Engineered Material Arresting System (EMAS)

- Relocated Localizer antenna
- Retaining wall
- Construct partial perimeter road

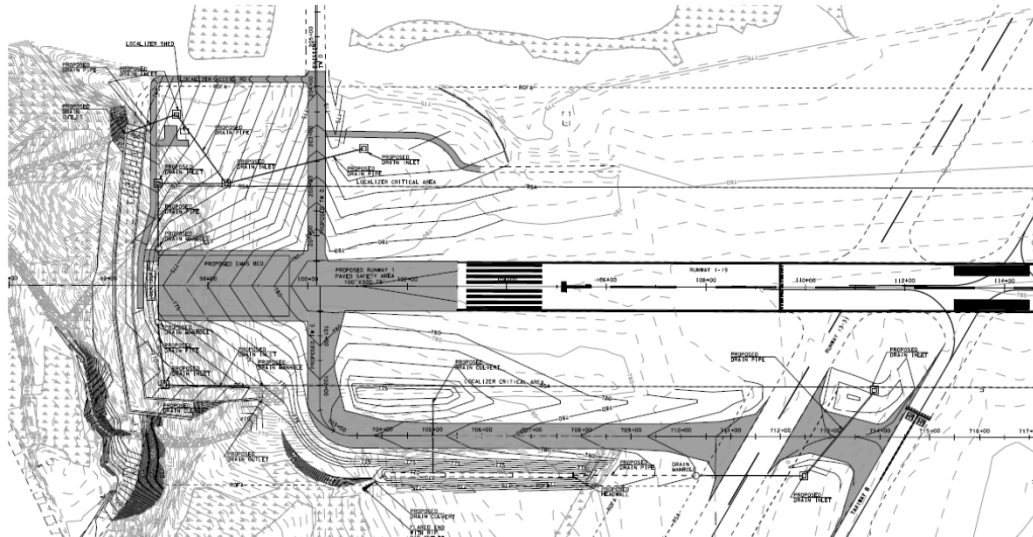
Phase III - Runway 1 Safety Area with EMAS

FY15 Project Season



Rutland Southern Vermont Regional Airport Development

Phase III - Runway 1 Safety Area with EMAS FY15 Project Season



SW 1248 Chicago 2005



Rutland Southern Vermont Regional Airport Multi-Use Vehicle

The current Rutland sweeper replacement need:

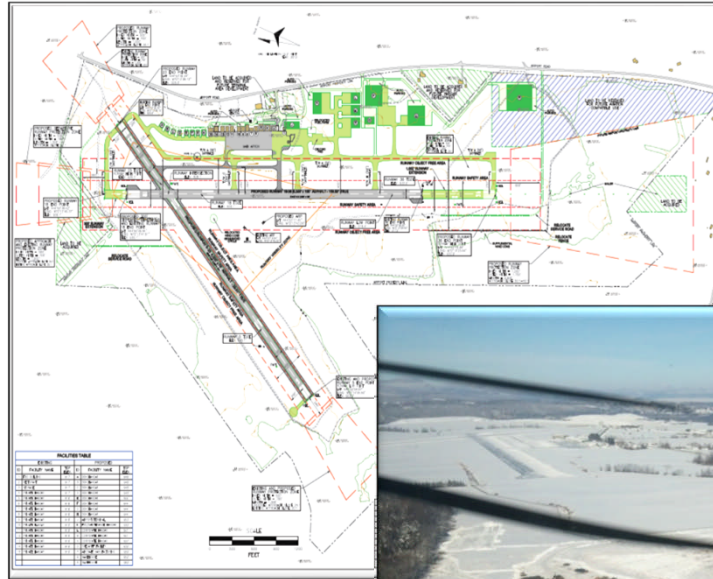
- Over a decade old w/high maintenance expenses
- Highly inefficient (requires 30 minutes to switch from plowing to sweeping)
 - Lost flights, increased operating expenses (LOS takes longer)
- Safety Risk (requires operator to hook up – in dark, sometimes alone)



Newport State Airport Development

(100 Direct Jobs)

Runway Extension	1,000 ft.	FAA / State
Apron Extension	200 ft.	FAA / State
Terminal Bldg	10,000 sq. ft.	QResorts
Water / Waste Water	Phase I	State
Aircraft Mx Hangar	28,800 sq. ft.	QResorts
Aircraft Manu Facility	50,000 sq. ft.	QResorts / Flight Design
Warehouse	50,000 sq. ft.	QResorts
Warehouse	100,000 sq. ft.	QResorts
Hangars – 3 each	14,400 sq. ft.	QResorts
Snow Removal Building	5,000 sq. ft.	FAA / State
Storage Hangars – 2 each	3,000 sq. ft.	QResorts
Water / Waste Water	Phase II	QResorts
Full Parallel Taxiway Project	In design now	FAA / State



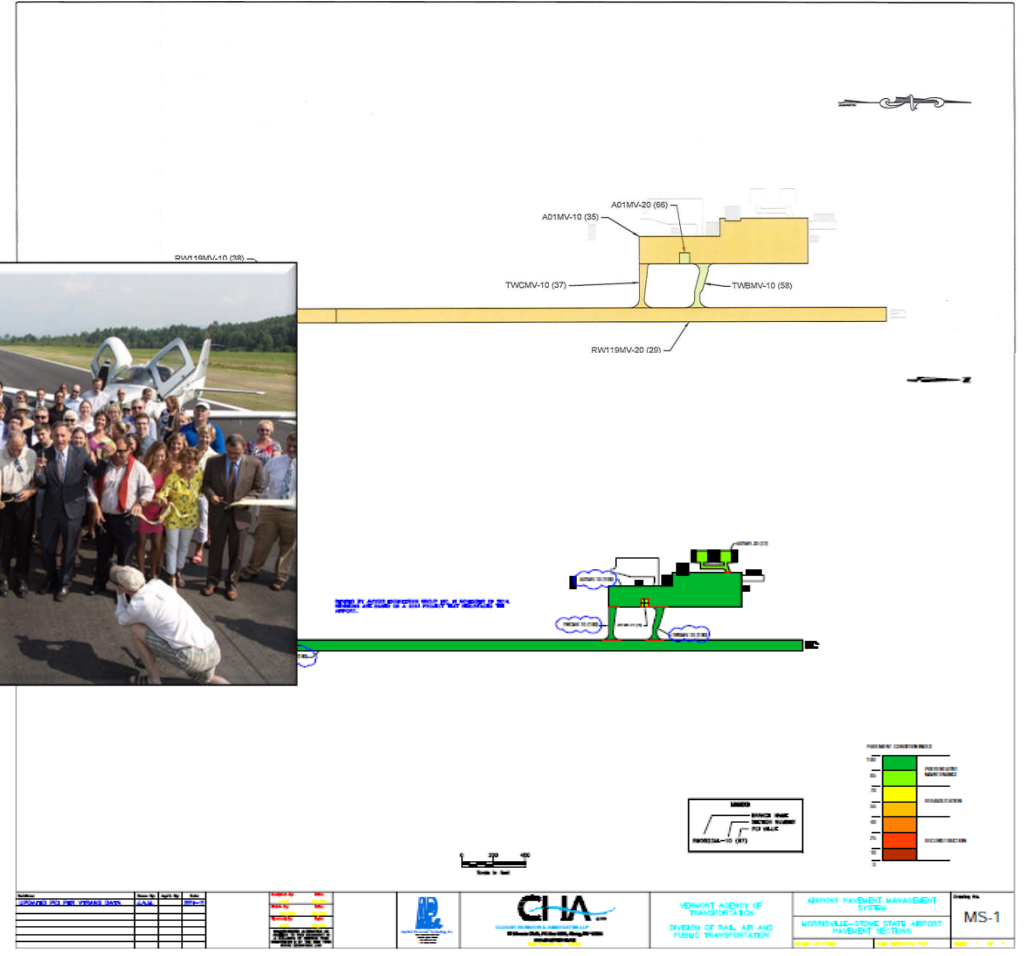
Snow Removal Building



Grant to fund
1000' Rwy
Extension and
200' Apron
executed 2014

This development project will include the construction of 288,000 sq. ft. of additional buildings. With 1,000' runway extension the airport will be more capable of receiving passengers and cargo. 100 direct jobs on airport. Full build out is expected by 2018. With the exception of a pending water/WW permit, all permits issued. Tree clearing is underway – JAN2015

Morrisville Stowe Airport Development Phase I – Airside (5 jobs added 2014)



Before: PCI as low as 29. Business levels low. Charter low. Fuel sales low. Maintenance High. Many obstructions.
After: PCI 100. New Mgt Bus. lvs mod to high. Charter Mod. Fuel Sales high. Maintenance Low. No obstructions.

Maintenance greatly reduced. No crack fill, no block patching, no heavy tree clearing. New State of the Art lights

Morrisville Stowe Airport Development Phase I I – Landside (25 Direct jobs)

Landside development will include:

Construction of 33,000 sq ft aviation facility EB-5 Funded

- Charter Operation to anywhere in New England
- Full Service Fixed Base Operator to receive inbound charter aircraft. Deicing. Catered food. Rental cars.
- Technologically Advanced Flight School I – Cirrus
- Aircraft Maintenance
- Restaurant
- Larger Park n Ride
- More parking



Morrisville Stowe Airport Development

Five months of data from: August 1, 2014 to December 31, 2014

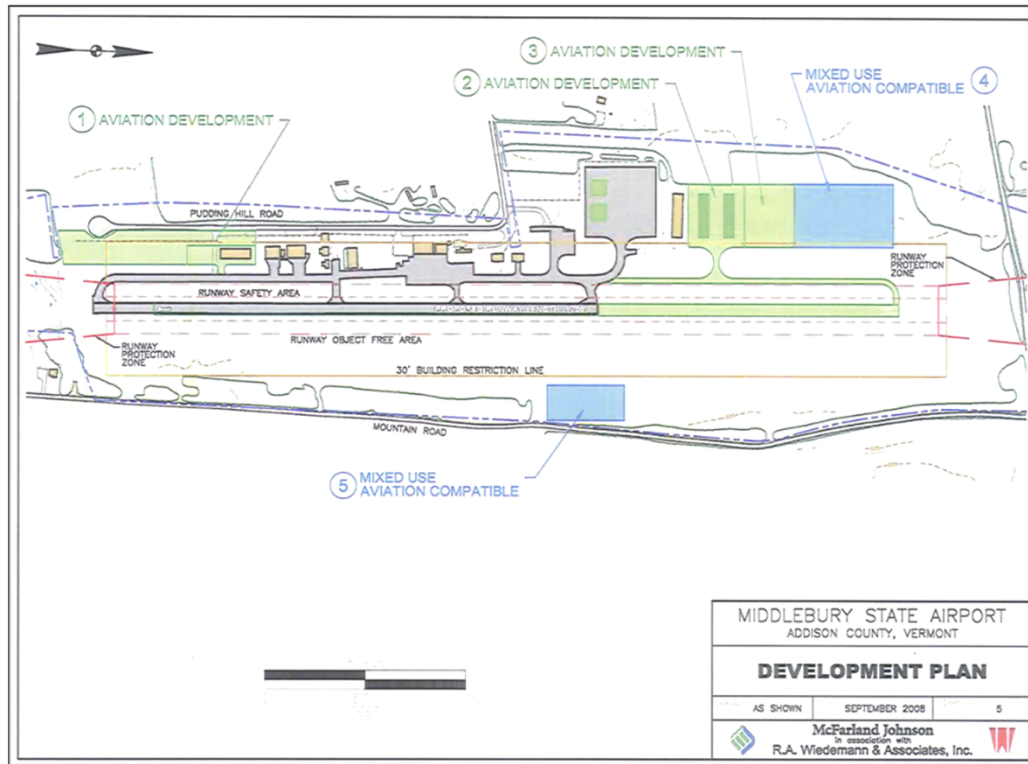
Visiting Aircraft Type (Operations)	
Turbo Prop	72
Jet	14
Helicopter	20
Piston	73
Total	179
Gallons Aviation Fuel Sold	
Jet A	14,449.13
100LL	8,442.34
Total	22,891.47
Purpose for Visiting (Operations)	
Business	71
Recreation	60
Other	48
Total	179
Type of Operation	
General Aviation	86
Fractional Ownership	48
Charter	39
Other	6
Total	179
People Arriving and Departing	
Arriving	402
Departing	445



A sampling of various operators that are utilizing the airport: PlaneSense, Tradewinds Aviation, NetJets, Pride Aviation, Talon Air, Taughannock Aviation, Jarden Corporation, Gama Aviation and Green Mountain Air.

Guy Rouelle. State Aeronautics Administrator. Guy.Rouelle@state.vt.us. (802)522-9995 (cell) (802)828-2833 (Office)

Middlebury Airport Development



Economic Opportunities (working with Middlebury Economic Staff)

- Middlebury Snow Bowl – Down hill skiing
- Rikert Nordic Center – X-Country skiing
- Middlebury College
- Designing 700' Runway extension – Construct FY16

Tie the Airport to Skiing,
College and
develop inter-modality

- Multi-Modal opportunities: Aviation/Rail/Public Transit/Bike

Guy Rouelle. State Aeronautics Administrator. Guy.Rouelle@state.vt.us. (802)522-9995 (cell) (802)828-2833 (Office)

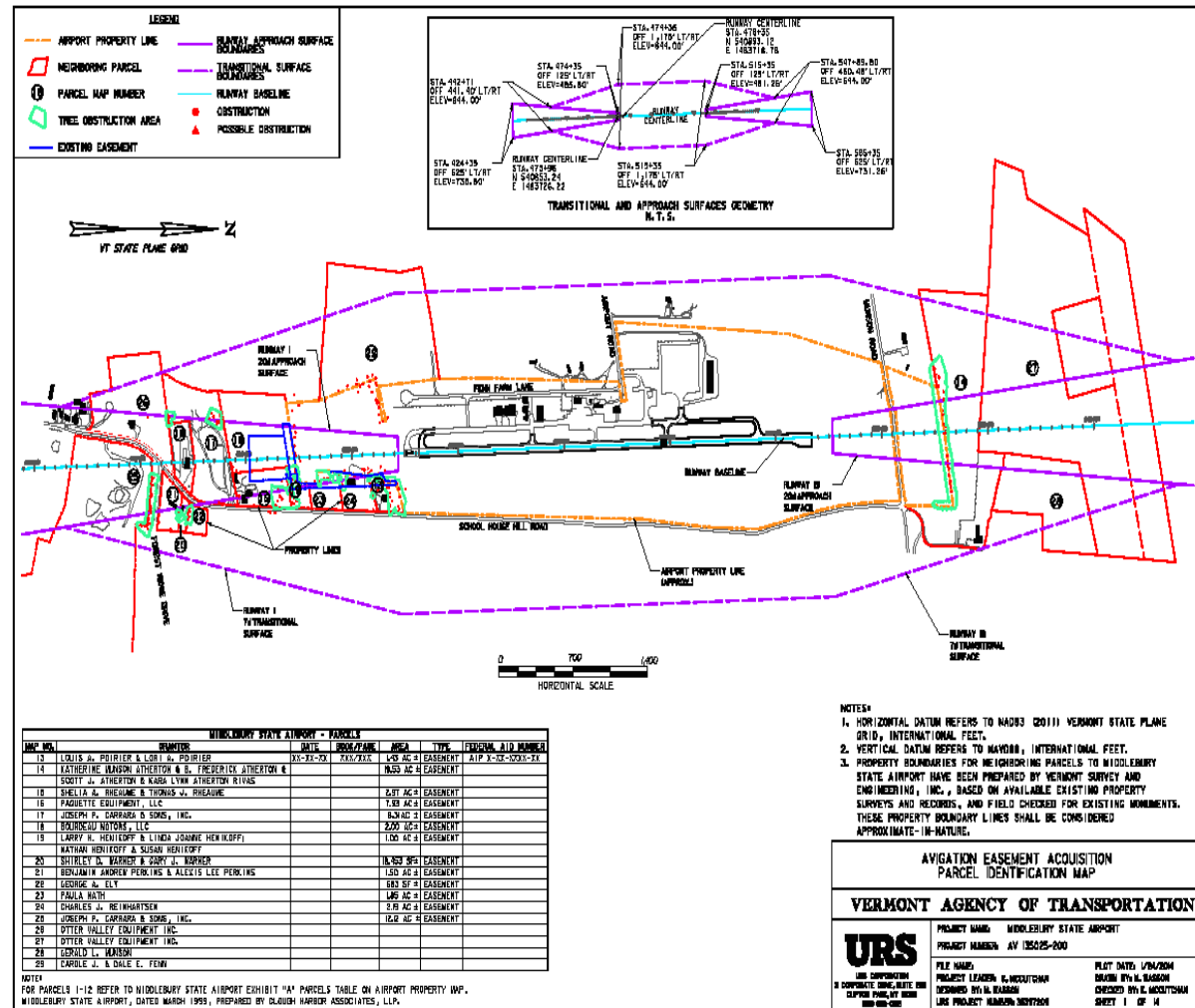
Middlebury Airport Development

Avigation Easements FY13 – FY15

Highlighted Project

Middlebury - Federally funded

- Multiple tree penetrations identified in approach surfaces (2012)
 - Most penetrations off airport property.
 - Required acquisition of avigation easements
- Federal grant executed to conduct appraisals, hold 502 hearings, negotiate and execute Options for avigation easements.
 - 13 parcels.
 - Easement acquisitions in Fall 2014 – early Spring 2015.
- Federal grant executed to conduct Environmental Assessment. On going
- Design for tree clearing, runway and taxiway reconstruction. 2015. Scoping now.



Middlebury Airport Development

Hangar removal

April 2014

Highlighted Project

Middlebury - State funded

Hangar replacement

- 1950 hangar damaged in wind storm
- Deemed structurally unsound
- Unusable space



New Hangar

- Hangar specs
 - 56' x 84'
 - Radiant Floor Heat
 - Septic
- Individual Lease agreements
 - 6 aircraft at \$200/mo.
- Will be leased to an FBO for aircraft storage

Hangar Construct

SEP 2014 – DEC 2014



Franklin County Airport Development

Light Sport Plane turf strip

- 1,200' additional landing area
- Will support growing Sport plane and ultra light community
- Collapsed Hangars during 2013 snow storm created need for more hangar space.

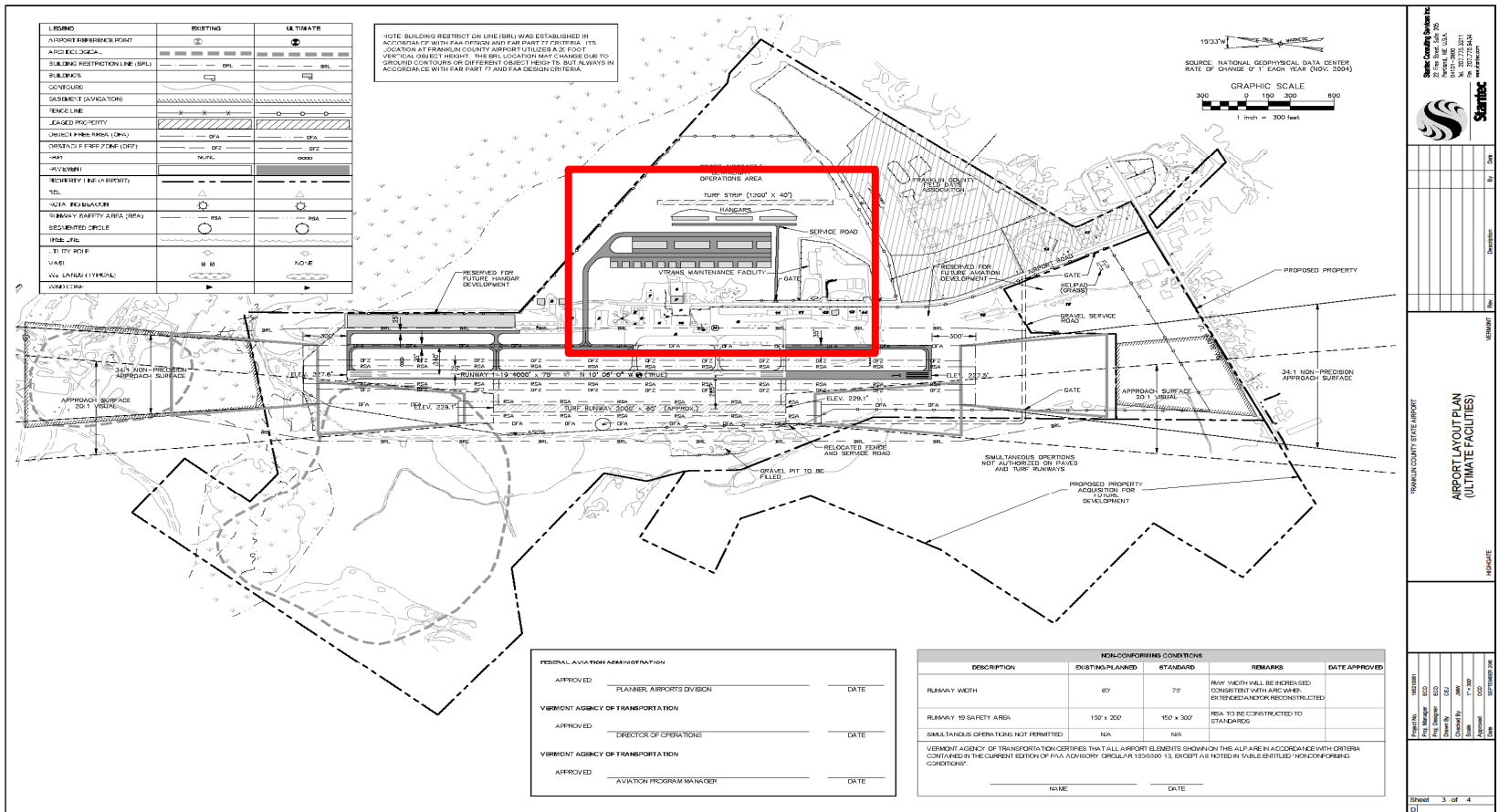
Taxiway Access to Light Sport turf strip

- Airport Layout Plan
 - Depicting Sport Plane turf strip with Taxiway Access
 - Additional Hangar space
 - 36 based Aircraft. Currently 52
 - 70% increase in lease revenue
 - Privately constructed hangars

Terminal Improvements

- Statewide Terminal building rehab program.
 - Goal is to transition airport terminals into cleaner, more efficient gateways while establishing an aeronautical hub for our communities
 - Program Began in 2011.
 - Franklin 2014

Airport Terminal	Year	Airport Terminal	Year
Knapp	2011	Caledonia	2013
Island Pond	2011	Franklin	2014
Bennington	2012	Morrisville*	2015
Hartness	2012	Middlebury	2016
Rutland	2012	Newport*	2016



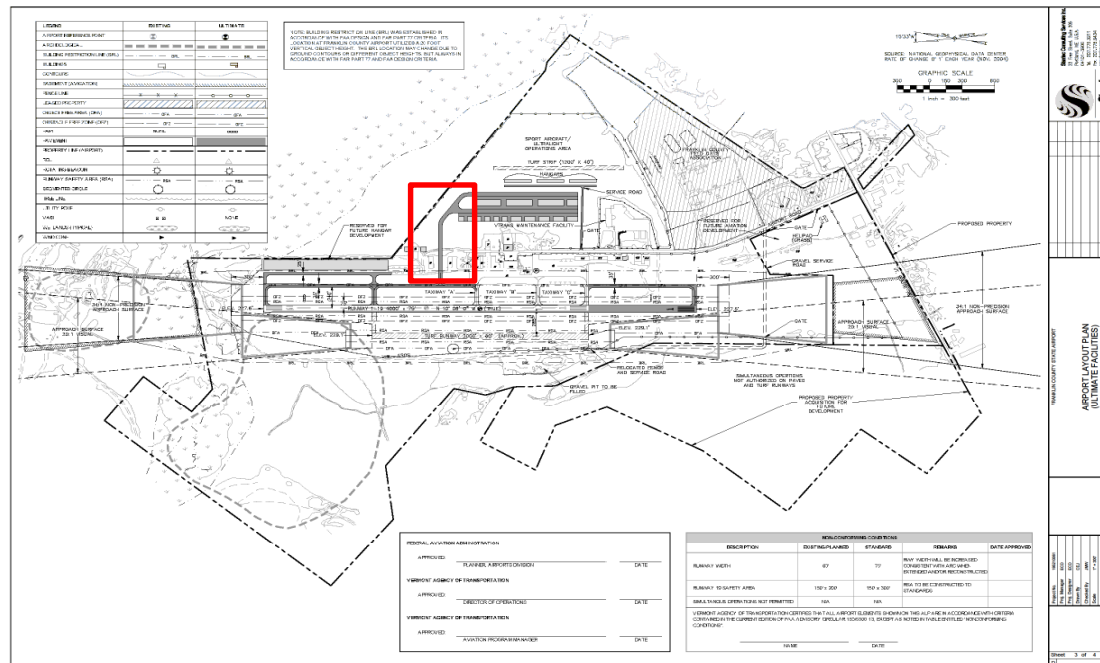
Guy Rouelle. State Aeronautics Administrator. Guy.Rouelle@state.vt.us. (802)522-9995 (cell) (802)828-2833 (Office)

Franklin County Airport Development

Light Sport Turf Strip

Projects

- Forest and Parks timber sales. (2012)
 - \$11,000 in revenue from timber sale
 - Removed trees and stumps
- Survey and permitting (2014)
 - Act 250
 - Stormwater (2014 - 15)
- Bulldoze, seed Strip (Summer 2015)
- Currently scoping the Design and permitting for Taxiway Access to Light Sport turf strip. (FAA Funded)



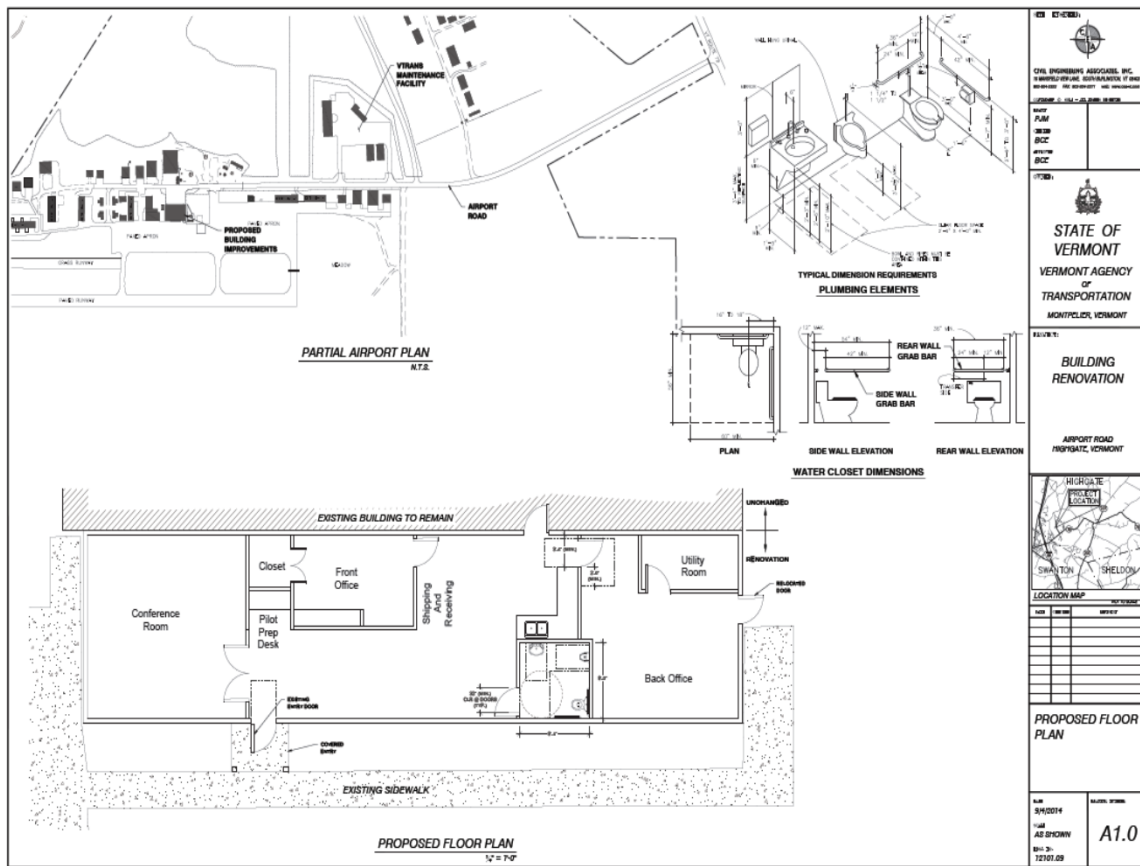
Franklin County Airport Development

Terminal Improvements

Statewide Terminal building rehab program

Goal: To transition airport terminals into cleaner, more efficient gateways while establishing an aeronautical hub for our communities

Franklin Terminal Building project – Completed Fall 2014



Summary Report

Calendar Year 2014

Fuel Revenue

State wide 35.9% increase

- More activity on airports
 - Fly ins
 - Airshows
 - Aerobatic competition
 - Glider Encampment
 - New Civil Air Patrol Squadron
 - 100LL 9.1% increase
- MVL under new management

Cargo

Statewide 7.3% increase

- Rutland 512,109 lbs.
- Knapp 215,148 lbs.

Direct Jobs

Statewide 10.6% increase

- Newport, Rutland, Morrisville, Middlebury contributed to this number.

Enplanements

Rutland 4.3% decrease

- Decrease due to
 - Airport construction closures
 - FAA weather equipment failures
- Working through winter to minimize impacts for next year.

Budget & Projects

FY2016

AVIATION													
FY 2016 GOVERNOR'S RECOMMEND - TRANSPORTATION PROGRAM													
PROJECT NAME	DESCRIPTION	NUMBER	OTHER	PI	RCW	CONST	TOTAL	FUND	FEDERAL	LOCAL	TOTAL	PRIORITY	
AIR OPERATIONS													
BENNINGTON	RUNWAY RECONSTRUCTION	AV15R010		250,000			250,000	35,000	225,000		250,000	11	
BERLIN	MASTER PLAN AND AIRPORT LAYOUT PLAN UPDATE			425,000			425,000	42,500	382,500		425,000	16	
CLARENDON	TSA HOMELAND SECURITY		125,000				125,000	80,000	45,000		125,000	2	
CLARENDON	RUNWAY EXTENSION	AV15R001				250,000	250,000	25,000	225,000		250,000	2	
CLARENDON	WAY 3 RSA/WYOMAS BFD	AV15R009				3,250,000	3,250,000	325,000	2,925,000		3,250,000	1	
CLARENDON	TAXWAY "D" AND "E"	AV15R018				500,000	500,000	50,000	450,000		500,000	2	
CLARENDON	SRE MULTI-USE VEHICLE		700,000				700,000	70,000	630,000		700,000	9	
COVENTRY	APRON EXPANSION	AV157006				900,000	900,000	90,000	810,000		900,000	5	
COVENTRY	SNOW REMOVAL BUILDING	AVP15005				750,000	750,000	75,000	675,000		750,000	6	
COVENTRY	RUNWAY EXTENSION	AV157005				2,250,000	2,250,000	225,000	2,025,000		2,250,000	4	
COVENTRY	CUSTOMS AND BORDER PROTECTION		189,000				189,000	18,900		165,300	189,000		
HIGHGATE	TAXWAY ACCESS LIGHT SPORT	AIR 04-2197		275,000			275,000	27,500	247,500		275,000	10	
LYNDON	AVIGATION BASEMENTS	AVP14003				300,000	300,000	30,000	270,000		300,000	12	
MIDDLEBURY	AVIGATION BASEMENTS	AV155004				290,000	290,000	29,000	261,000		290,000	12	
MIDDLEBURY	RUNWAY SAFETY AREA WITH RUNWAY EXTENSION	AR04-2121		300,000			300,000	30,000	270,000		300,000	15	
SO. BURLINGTON	BURLINGTON INTERNATIONAL AIP PROGRAM		7,748,629				7,748,629	464,917	6,973,748	309,844	7,748,629		
STATEWIDE	PAVEMENT MAINTENANCE					300,000	300,000	30,000	270,000		300,000	8	
STATEWIDE	PERIMETER FENCING			60,000		260,000	300,000	30,000	270,000		300,000	14	
STATEWIDE	GRANT TO CIVIL AIR PATROL (CAP)	A1095	60,000				60,000	60,000			60,000		
STATEWIDE	FUEL FARM COMPLIANCE					100,000	100,000	100,000			100,000	7	
STATEWIDE	ADMINISTRATIVE SUPPORT - AIR	A1040	1,177,951				1,177,951	1,177,951			1,177,951		
STATEWIDE	AIRPORT MAINTENANCE & FACILITY IMPROVEMENTS	A1042	1,650,000				1,650,000	1,650,000			1,650,000		
TOTAL AVIATION PROGRAM				11,630,560	1,290,000	560,000	8,540,000	22,042,560	4,667,668	16,927,748	0	445,344	22,042,560
TOTAL AVIATION APPROPRIATION									4,667,668	9,954,000	0	135,200	14,756,868
Notes: APPROPRIATION AMOUNT EXCLUDES \$4,971,744 FAA FUNDS AND \$309,844 LOCAL FUNDS THAT FLOW THROUGH DIRECTLY TO BURLINGTON AIRPORT.													