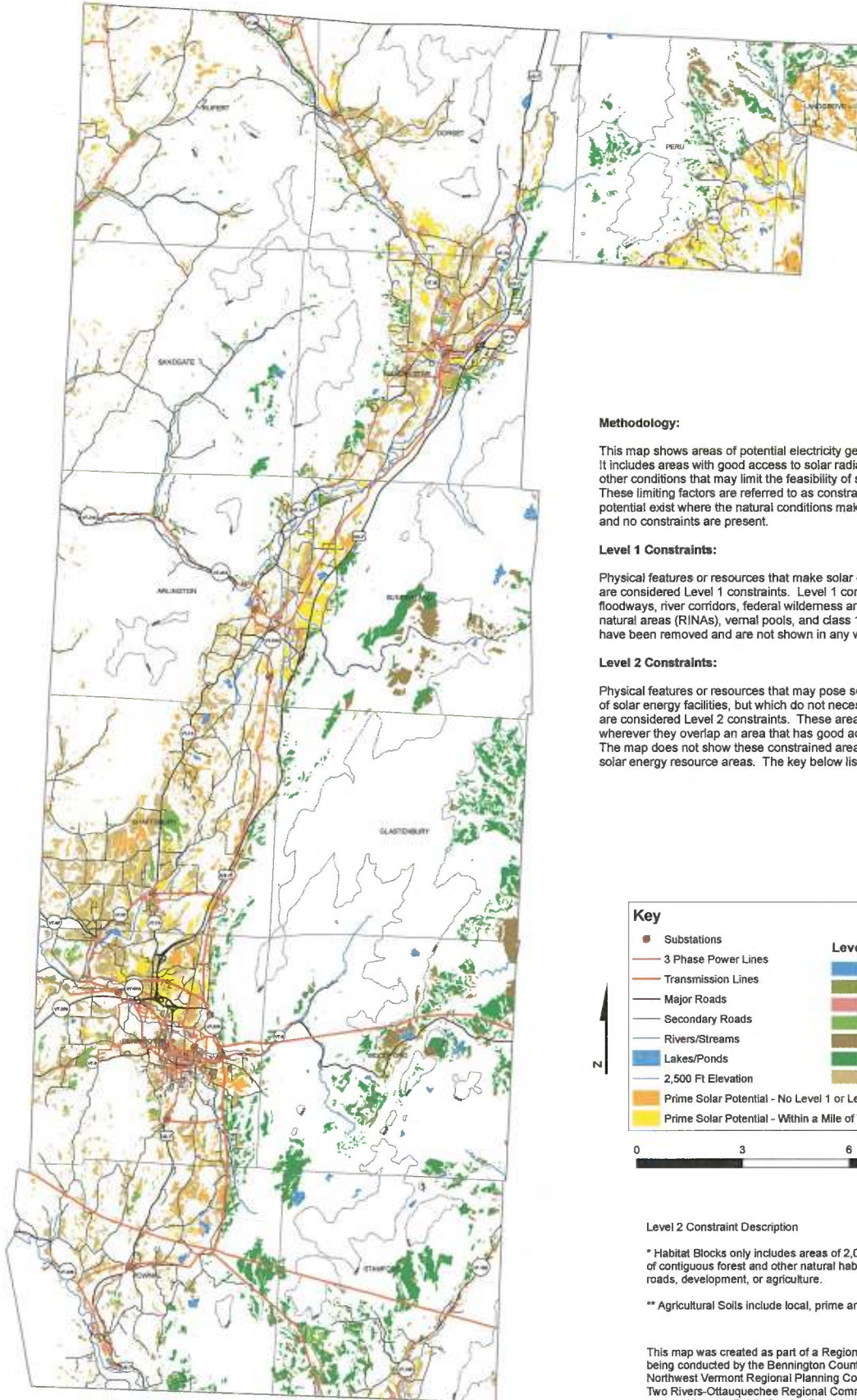


Renewable Energy Potential: SOLAR



Methodology:

This map shows areas of potential electricity generation from solar energy. It includes areas with good access to solar radiation and also considers other conditions that may limit the feasibility of solar energy development. These limiting factors are referred to as constraints. Areas of prime solar potential exist where the natural conditions make development feasible and no constraints are present.

Level 1 Constraints:

Physical features or resources that make solar energy development infeasible are considered Level 1 constraints. Level 1 constraints include: FEMA floodways, river corridors, federal wilderness areas, rare and irreplaceable natural areas (RINAs), vernal pools, and class 1 and 2 wetlands. These areas have been removed and are not shown in any way on this map.

Level 2 Constraints:

Physical features or resources that may pose some obstacle to development of solar energy facilities, but which do not necessarily preclude development are considered Level 2 constraints. These areas ARE shown on the map wherever they overlap an area that has good access to solar energy. The map does not show these constrained areas where they do not overlap solar energy resource areas. The key below lists each Level 2 constraint.

Key	
●	Substations
—	3 Phase Power Lines
—	Transmission Lines
—	Major Roads
—	Secondary Roads
—	Rivers/Streams
—	Lakes/Ponds
—	2,500 Ft Elevation
■	Prime Solar Potential - No Level 1 or Level 2 Constraints
■	Prime Solar Potential - Within a Mile of Three Phase Power Lines
Level 2 Constraints	
■	Class 3 Wetlands
■	Deer Wintering Areas
■	Special Flood Hazard Areas
■	Conserved Lands
■	Hydic Soils
■	Habitat Blocks *
■	Agricultural Soils **



Level 2 Constraint Description

* Habitat Blocks only includes areas of 2,000 acres or greater of contiguous forest and other natural habitats that are unfragmented by roads, development, or agriculture.

** Agricultural Soils include local, prime and statewide classifications.

This map was created as part of a Regional Energy Planning Initiative being conducted by the Bennington County Regional Commission, Northwest Vermont Regional Planning Commission, Two Rivers-Ottauquechee Regional Commission, and the Vermont Public Service Department.

Created: July 2015