



**STATE OF VERMONT**  
OFFICE OF LEGISLATIVE COUNCIL

**Witness Information**

**Handouts**

Please make sure to put a title, date, and your name on the top of each document submitted for testimony.

Copies of handouts must be emailed to Ken Bruno at [kbruno@leg.state.vt.us](mailto:kbruno@leg.state.vt.us) at least 24 hours before your scheduled time. In addition, please also bring five hard copies of your handout.

If you want copies made at the State House, there is a charge of \$.10 per printed side. State employees can use transfer numbers to pay for copies made at the State House. Any document you hand out to the committees is by law available to the public.

**ATTENTION- With few exceptions, any documents a witness submits to a committee or to a committee assistant are open to the public.**

**In addition, a witness' submission of a document authored by the witness or his or her organization constitutes consent to its posting on the committee's webpage, unless the witness specifically requests that the document not be posted. Although the committee will honor requests not to post such documents on its webpage, once a witness submits a document to the committee, it is a public record and will be subject to public inspection and copying unless exempt under the Public Records Act.**

The committee's information page is available at this url:  
<http://legislature.vermont.gov/committee/detail/2016/24>

The agenda for committees is updated continually. You can check the agenda at:  
<http://www.leg.state.vt.us>

**Equipment**

If you require any special equipment or resources for your testimony, please notify the committee assistant as soon as possible so that arrangements can be made.

**Phone testimony**

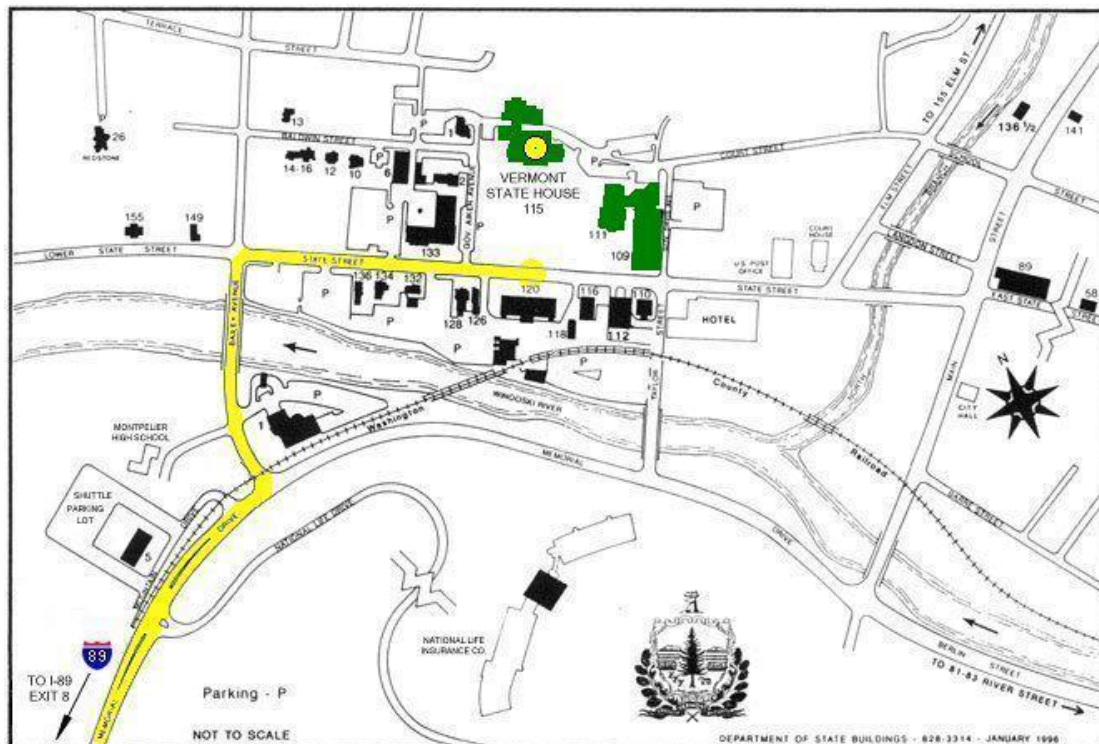
If you have been approved to testify by phone, please provide the committee assistant with a working phone number at least 24 hours before your scheduled testimony time. The committee assistant will test this phone number to ensure connectivity. The committee will call you when ready.

## Driving Directions

The Senate Education Committee is located in Room 28 of the State House.

115 State Street  
Montpelier, VT 05641

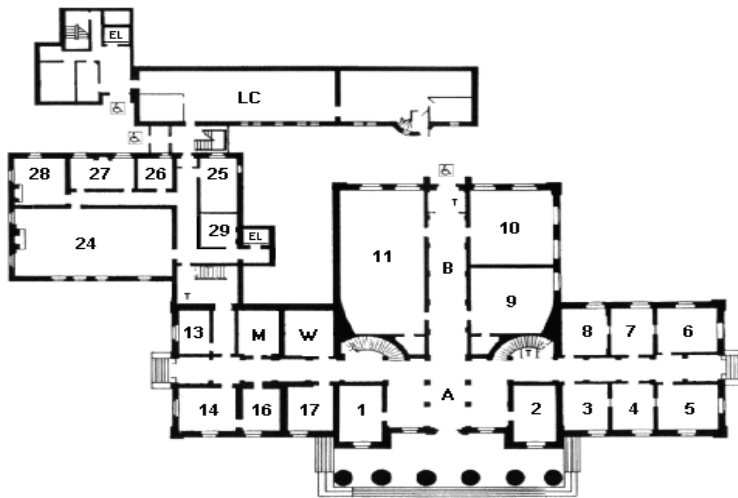
<b>From I-89:</b>	Take EXIT 8 toward US-2/MONTPELIER/ VT-12/ST. JOHNSBURY.	0.5 miles
1:	Merge onto MEMORIAL DR.	0.7 miles
2:	Turn LEFT onto US-2/BAILEY AVE	0.1 miles
3:	Turn RIGHT onto STATE ST/US-2 BR/THEODORE ROOSEVELT HWY.	0.2 miles
4:	Vermont State House, 115 State Street (on left)	0.2 miles



Parking is challenging during the legislative session. You can park on Montpelier streets for up to 2 hours at parking spaces that require quarters, dimes, or nickels. There is a shuttle that runs from the parking lot in lower left-hand corner of the map above, and also from National Life. The shuttle is free; schedules for the two routes are available online: [http://gmtaride.org/wordpress/wp-content/uploads/Capital-Shuttle\\_1110.pdf](http://gmtaride.org/wordpress/wp-content/uploads/Capital-Shuttle_1110.pdf)

**Senate Education is in Room 28, first floor.**


**Floor 1 (Entrance Floor)**



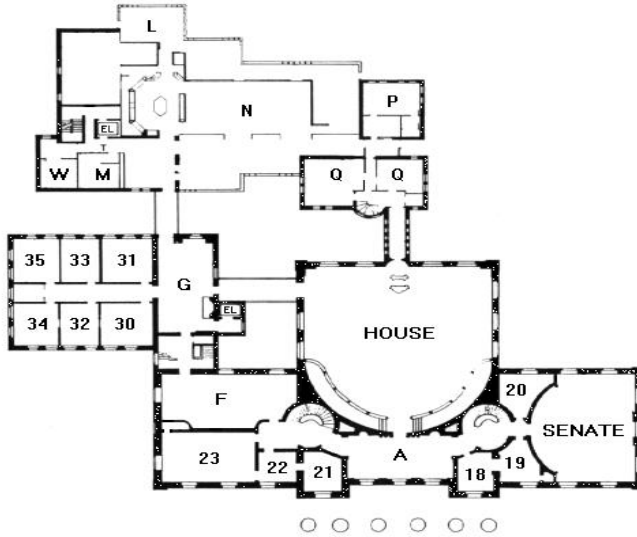
**ROOM**

**KEY**

- 1 Senate Judiciary Committee
- 2 Sergeant-At-Arms
- 3 Senate Transportation Committee
- 4 Senate Government Operations Committee
- 5 Senate Appropriations Committee
- 6 Senate Finance Committee
- 7 Senate Institutions Committee
- 8 Senate Natural Resources and Energy Committee
- 9 Coatroom
- 10 Small Hearing Room
- 11 Large Hearing Room
- 13 President *Pro Tempore* of the Senate
- 14 Lt. Governor (President of the Senate)
- 16 Lt. Governor's Staff
- 17 Senate Health and Welfare Committee
- 24 Legislative Lounge (Old Supreme Court Chamber)
- 25 Copy Center
- 26 Senate Agriculture Committee
- 27 Senate Economic Development, Housing, and General Affairs
- 28 Senate Education Committee**
- 29 Capitol Police

- A Lobby
- B Hall of Inscriptions (Lincoln Statue)
- LC Legislative Council
- T Public Telephones
- M&W Rest Rooms
- EL Elevator
-  Accessible Entrances

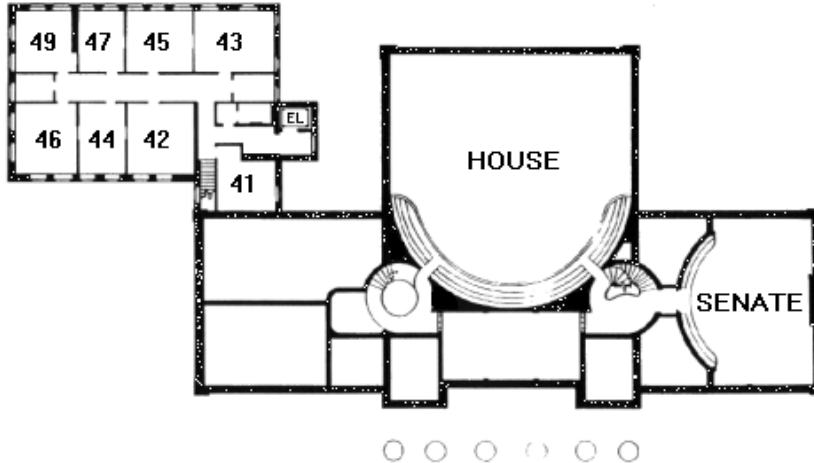
## Floor 2



<b>ROOM</b>	<b>KEY</b>
HOUSE	House Chamber
SENATE	Senate Chamber
18	Secretary of the Senate
19	Secretary of the Senate
20	Senate Coatroom
21	Governor's Staff
22	Governor's Staff
23	Governor's Office
30	House Judiciary Committee
31	House Agriculture and Forest Products Committee
32	House Education Committee
33	House Corrections and Institutions Committee
34	House Ways and Means Committee
35	House Commerce and Economic Development Committee
A	House Vestibule (Hall of the Flags)
F	Cedar Creek Room

- L Ethan Allen Room
- N State House Food Court (Abbey Group)
- P Speaker of the House
- Q Clerk of the House
- T Public Telephones
- M&W Rest Rooms
- EL Elevator

### Floor 3



<b>ROOM</b>	<b>KEY</b>
41	House General, Housing and Military Affairs Committee
42	House Appropriations Committee
43	House Transportation Committee
44	House Natural Resources and Energy Committee
45	House Health Care Committee
46	House Human Services Committee
47	House Fish, Wildlife, and Water Resources Committee
49	House Government Operations Committee
HOUSE	House Chamber Balcony
SENATE	Senate Chamber Balcony
EL	Elevator

There is a coat room near the Sergeant-At-Arms Office in the center of the main floor. You can store outerwear there.

Occasionally we must cancel hearings. We will attempt to notify you as soon as we hear of cancellations or postponements.

If the weather is bad, you can testify by phone rather than chance dangerous driving conditions.

If you have further questions, please contact Ken Bruno at [kbruno@leg.state.vt.us](mailto:kbruno@leg.state.vt.us) (802) 828-3805.