

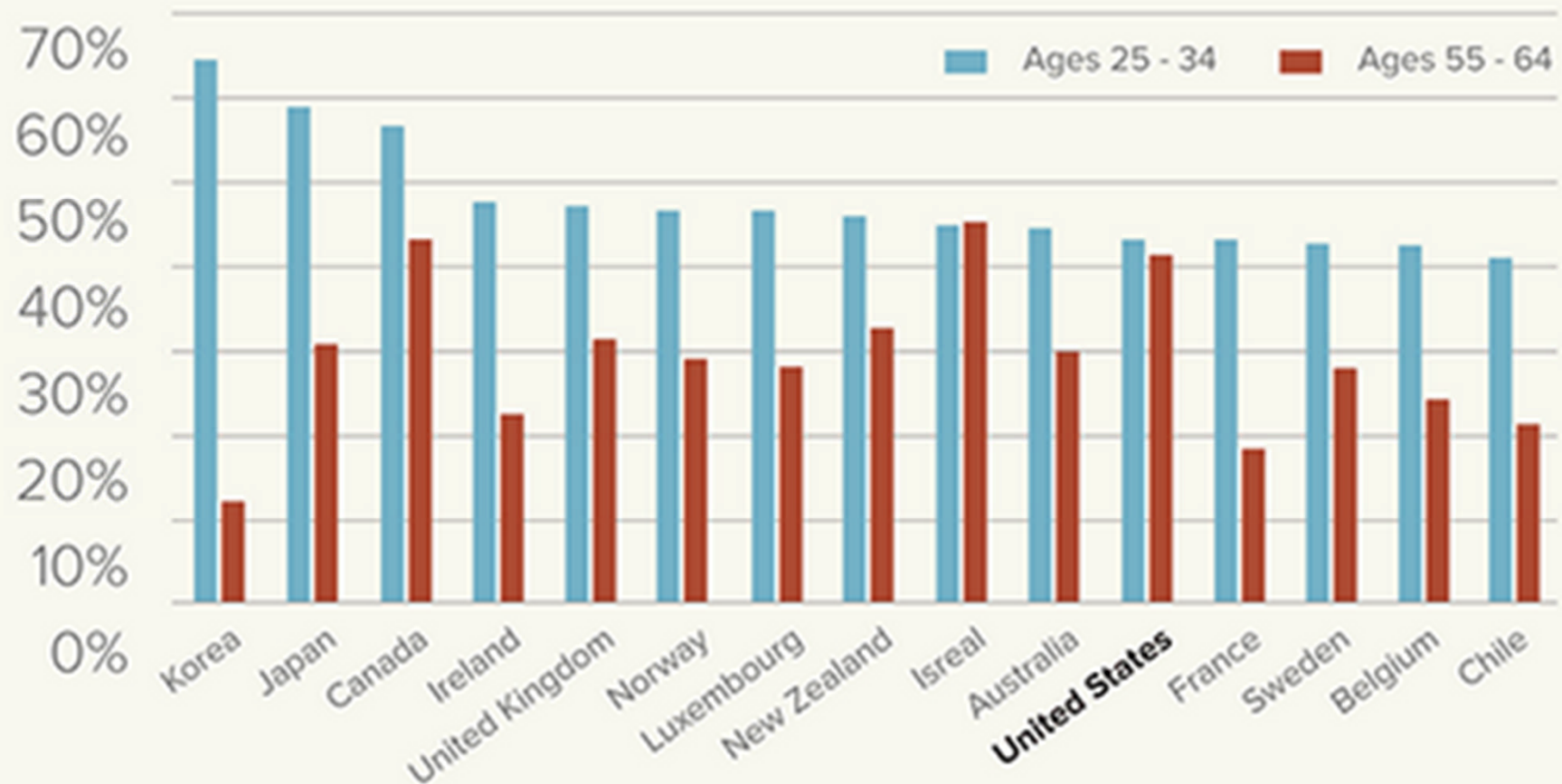
# Vermont's 2020 Goal for Higher Education

Act 133 (2010):

*The strategies developed by the  
prekindergarten-16 council ... shall include  
the goal of ensuring that at least 60 percent  
of the adult population will have earned an  
associate's or higher-level degree by 2020.*

# Postsecondary Education: A Global Imperative

Attainment rates in the developed world



Source: OECD, Education at a Glance 2013

# The National Economic Imperative

A blue square containing the white text '4/5' in a large, bold, sans-serif font.

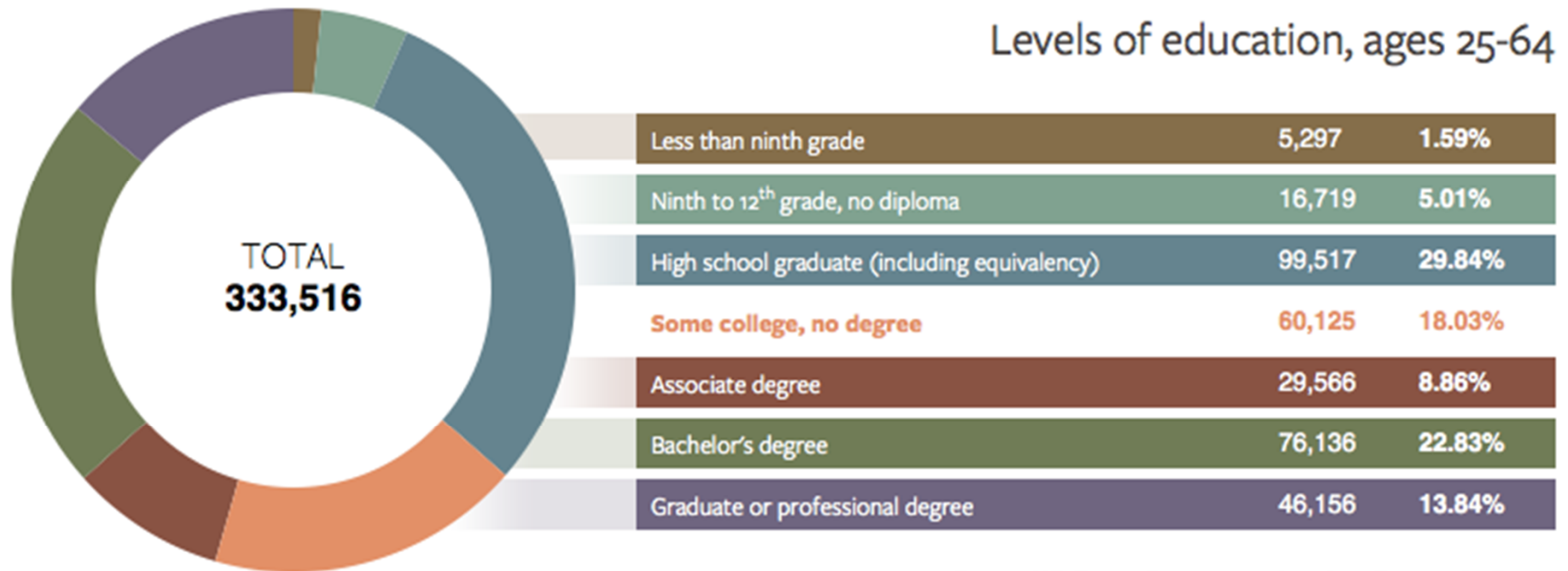
Four out of five jobs lost during the recession were those requiring high school education or less. Those low-skill jobs are gone for good, replaced by jobs that require specialized training and skills.

Despite a lingering high unemployment rate, employers say that they lack qualified job applicants. By 2020, two thirds of all jobs will require postsecondary education.

A green square containing the white text '2/3' in a large, bold, sans-serif font.

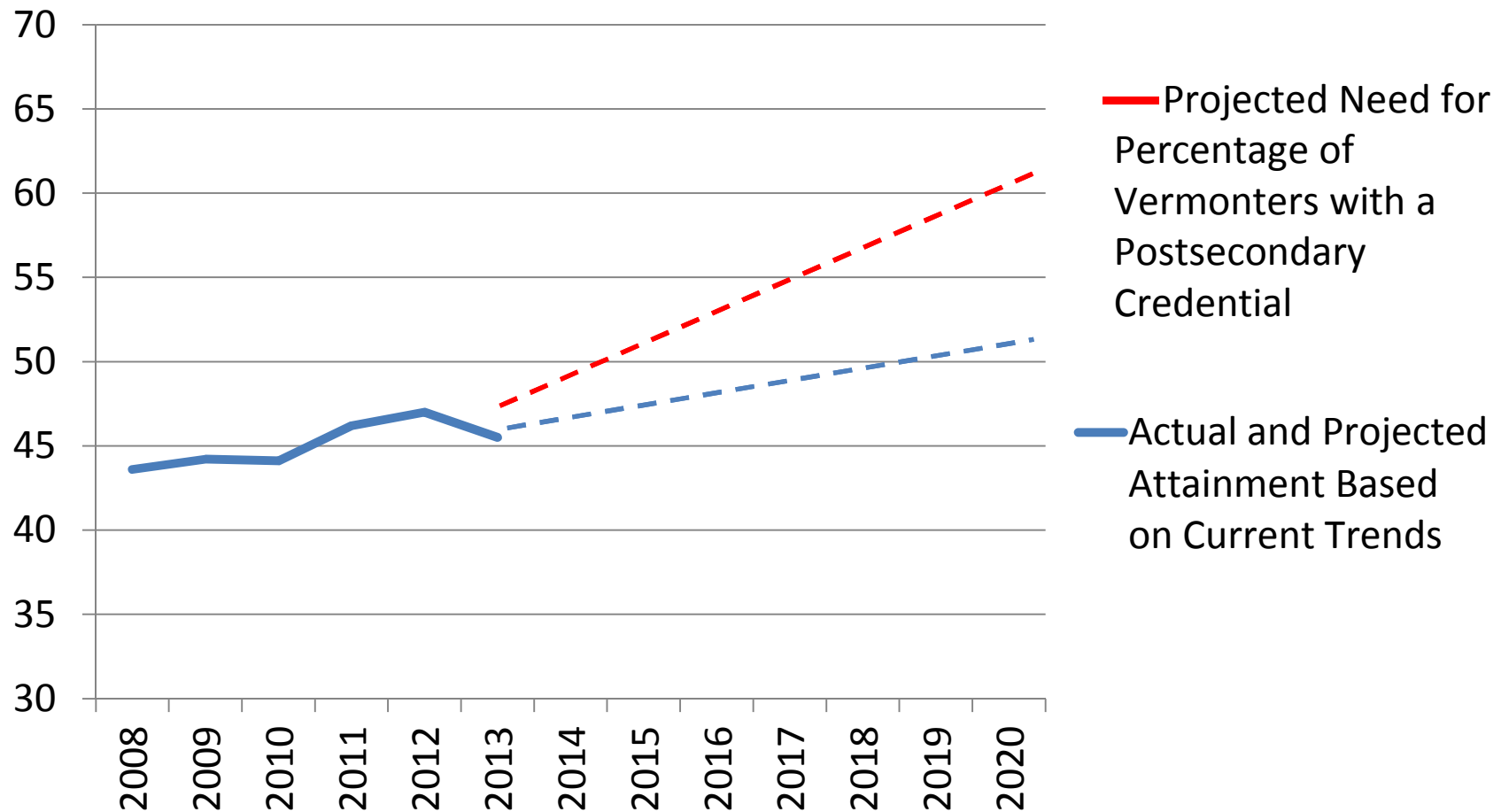
<http://www.luminafoundation.org/facts-and-figures>

# Vermont in 2013: 45.5% of adults had a postsecondary degree.

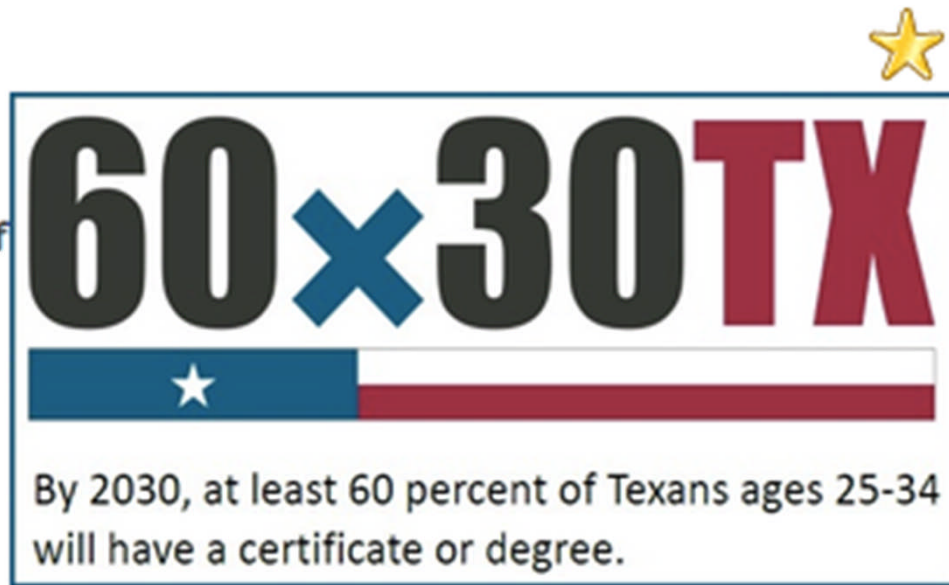


Source: U.S. Census Bureau, 2013 American Community Survey

# Vermont Degree Attainment Trends



# State Goals Across the Nation



## Why 65?

Approximately  
65% of jobs in NH  
by 2025 will require  
**postsecondary  
education**

—Georgetown U. Center on Education  
and the Workforce

**Tennessee:**  
55% by 2025



**Minnesota:** 2015 higher education omnibus bill sets a new statewide goal to increase the number of Minnesota residents ages 25 to 44 who hold postsecondary degrees or certificates to at least **70 percent by 2025.**

# **Getting to 60% by 2020 = 32,000 more Vermonters with degrees**

<b><u>Accomplishing one of the following...</u></b>	<b><u>Add'l degrees</u></b>
---	-----------------------------

Increase high school graduates continuing directly to college	= 4,500
---	---------

Improve graduation rates at all public and private colleges in Vermont	= 7,000
--	---------

Increase enrollment of Vermont's young working adults (ages 20 to 39)	= 2,500
---	---------

**Doing all of the above,  
at the same time = 32,000**

Postsecondary Attainment Projections Tool at:

<http://www.clasp.org/resources-and-publications/flash/cpes-roi-tool/Vermont.swf>

## Vermont Workplan “Policy Priorities”

**Establish 60% attainment goal as urgent state economic development need, *and***

### #1

Close college-going gap for **first generation & low-income high school graduates**

### #2

Expand postsecondary access and success for **working-age adults**

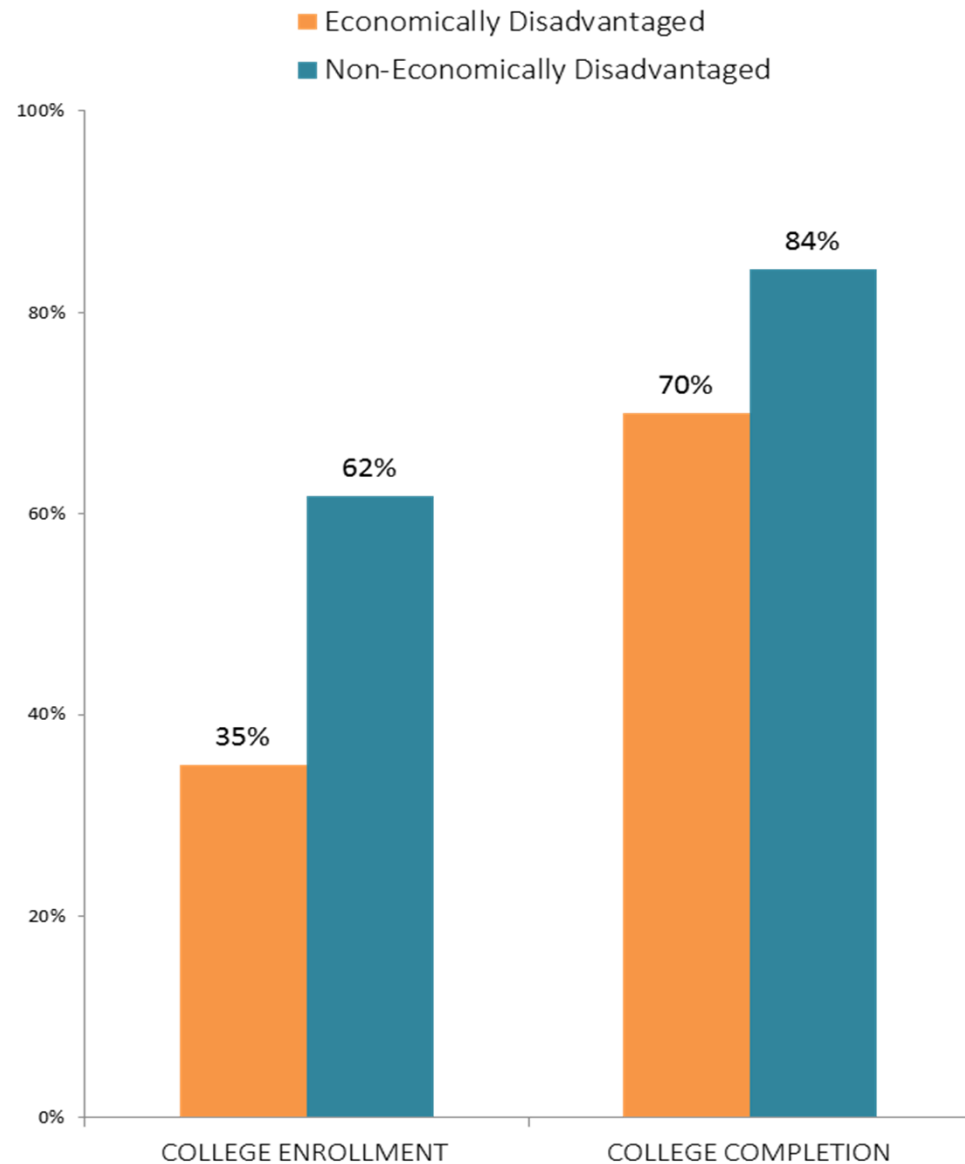
### #3

Cultivate community and **region-specific** strategies



**#1:**  
Close college-  
going gap for  
first  
generation &  
low-income  
high school  
graduates

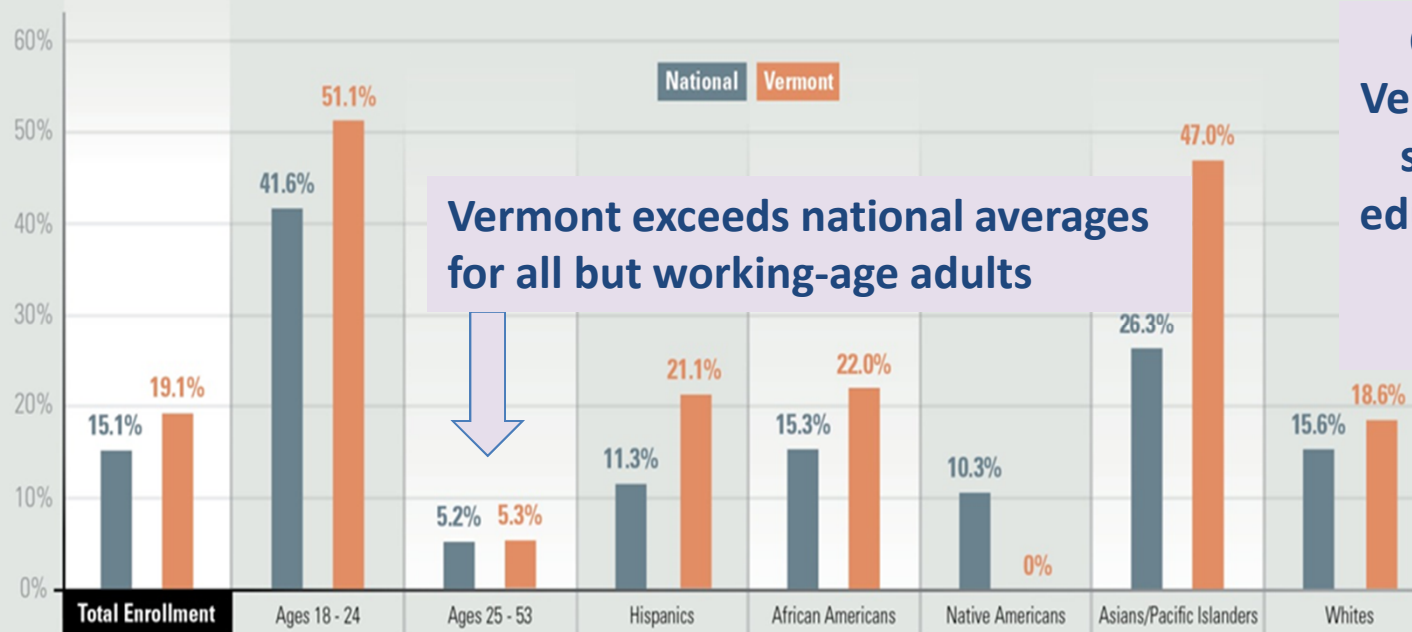
**College enrollment and completion rates in  
Vermont (2011)**



## #2

# Expand postsecondary access and success for **working-age adults**

College enrollment among Vermont residents, ages 18-53

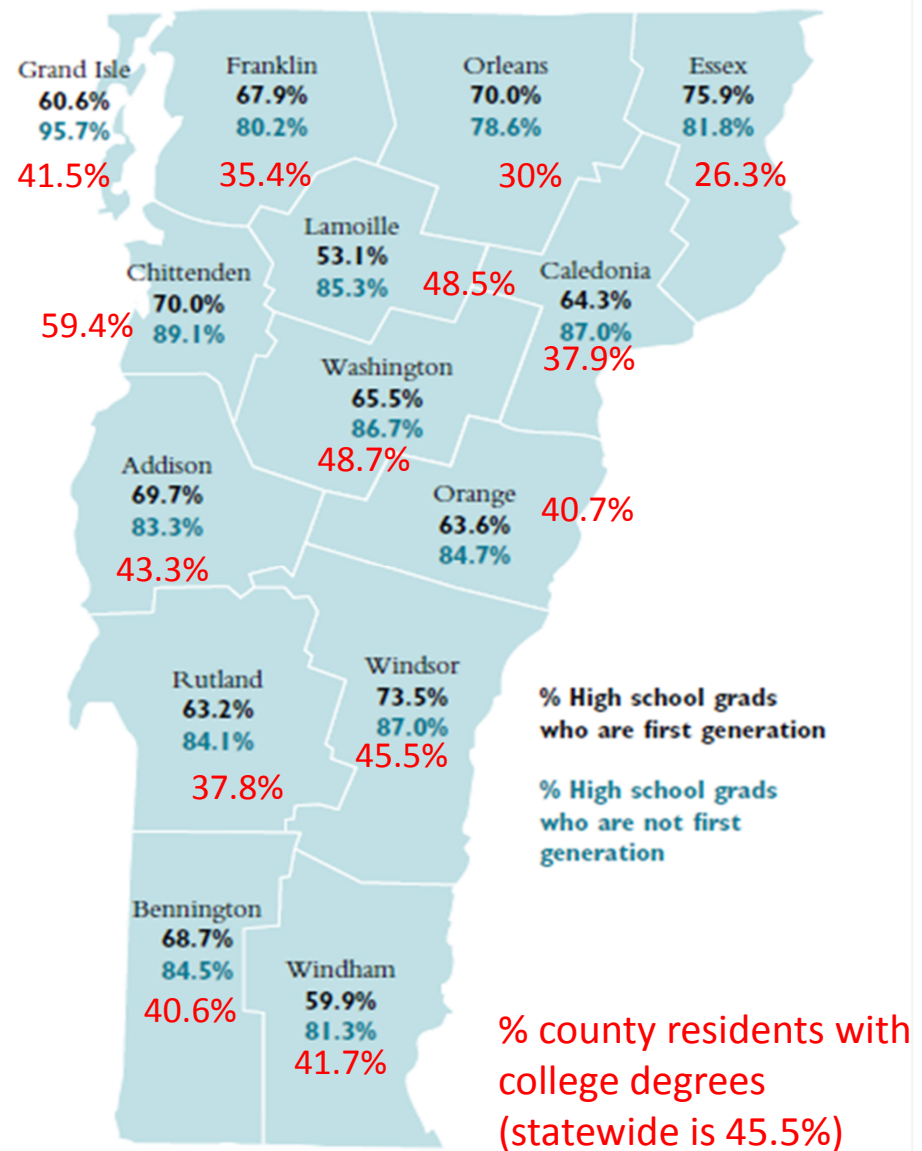


*Note:* These percentages reflect the enrollment of non-degree-holding students, ages 18-53, at public and private, two-year and four-year postsecondary institutions.  
*Source:* U.S. Census Bureau, 2013 American Community Survey One-Year Public Use Microdata Sample

# #3

## Cultivate community and region- specific strategies

**Vermont postsecondary education aspiration rates by county (2012)**



Vermont Student Assistance Corporation (2014). *Special Report: Gaps in Postsecondary Education Aspiration.*

# Vermont “Policy Academy” Timeline

**April-June 2015:** At Lumina’s invitation, Vermont delegation attends Lumina Strategy Labs Policy Academy Work Session, consulting with economic, equity, and higher education experts, and submits one-year workplan to Lumina for funding.

**July 2015:** Lumina Foundation awards Vermont a \$50,000 Policy Academy grant.

**Fall 2015:** Working Group, utilizing outside experts, to refine “Policy Priorities,” develop information for specific targets related to 60% goal, and identify participants and communication strategies for “key convening” of statewide leaders (target date: January 21, 2016).

**Spring 2016:** Working Group to continue engagement with statewide leaders, culminating in action steps, timeline, and targets for state plan for 2016-2020.

# Working Group Questions

- 1. What are Vermont's projected workforce and economic development needs for postsecondary certificates, and how should certificate attainment levels be considered within Vermont's postsecondary attainment goal?**
- 2. What are appropriate progress measures to support Vermont's efforts to reach its goal?**
- 3. What timeframe for Vermont's goal will best motivate successful action?**