



Policy & Planning Program SFY 2016 Program & Budget Overview

House Transportation Committee
26 January 2016

Joe Segale, P.E./PTP
Policy, Planning & Research Bureau Director

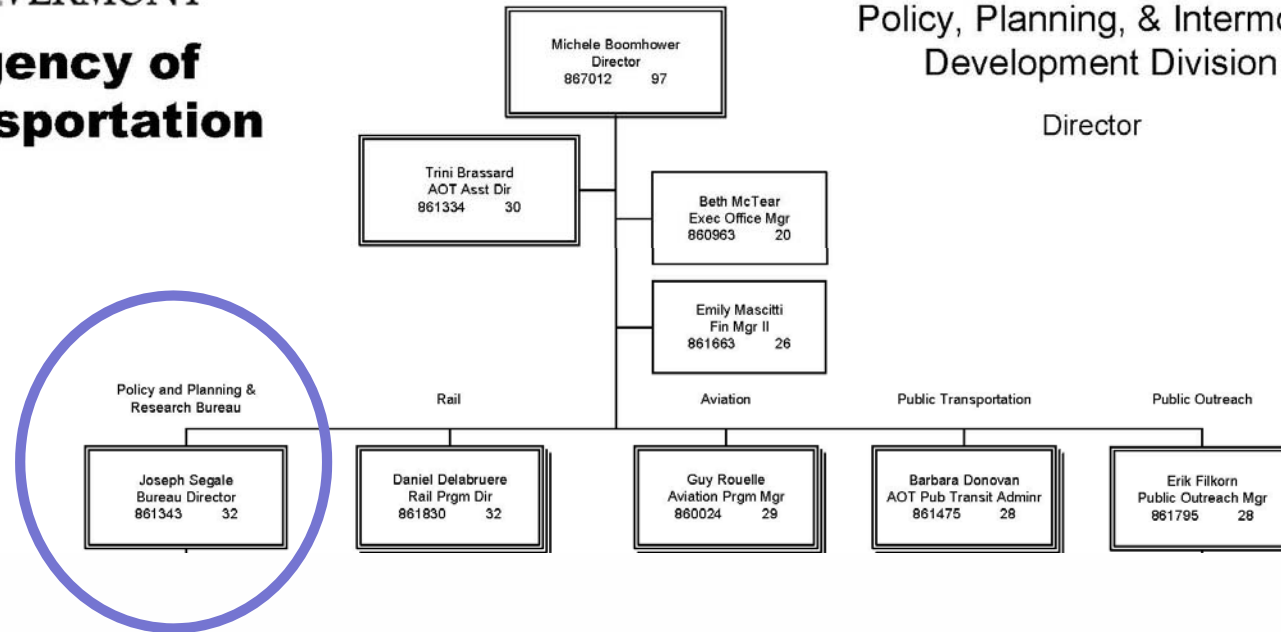


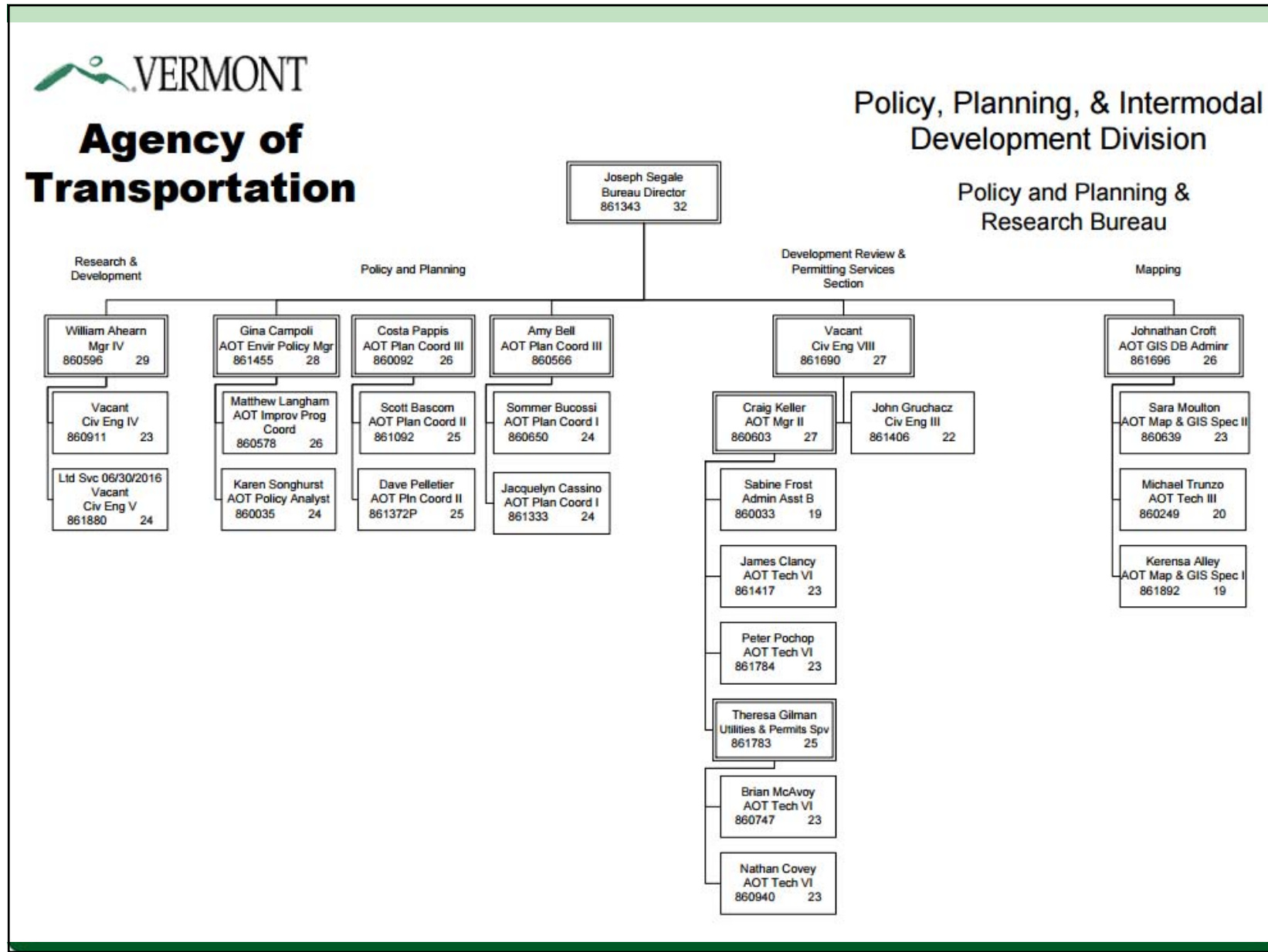


Policy, Planning & Intermodal Development Division



Policy, Planning, & Intermodal Development Division
Director







VTrans Policy & Planning Program Budget

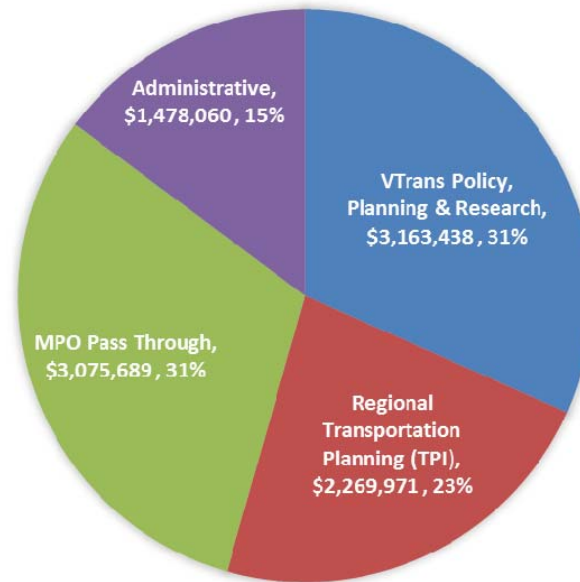
Expenditures	SFY 2016 as Passed	SFY 2017 Request	Change
Personal Services	\$ 3,209,333	\$ 3,446,689	7.4%
Operating	\$ 685,773	\$ 675,519	-1.5%
Grants	\$ 6,112,542	\$ 5,864,950	-4.1%
Totals	\$ 10,007,648	\$ 9,987,158	-0.2%
Funding Sources			
State Transportation Fund	\$ 2,065,384	\$ 2,576,853	24.8%
Federal Funds	\$ 7,942,264	\$ 7,396,305	-6.9%
Interdepartmental Transfers	\$ -	\$ 14,000	
Totals	\$ 10,007,648	\$ 9,987,158	-0.2%





Budget Allocation by Section

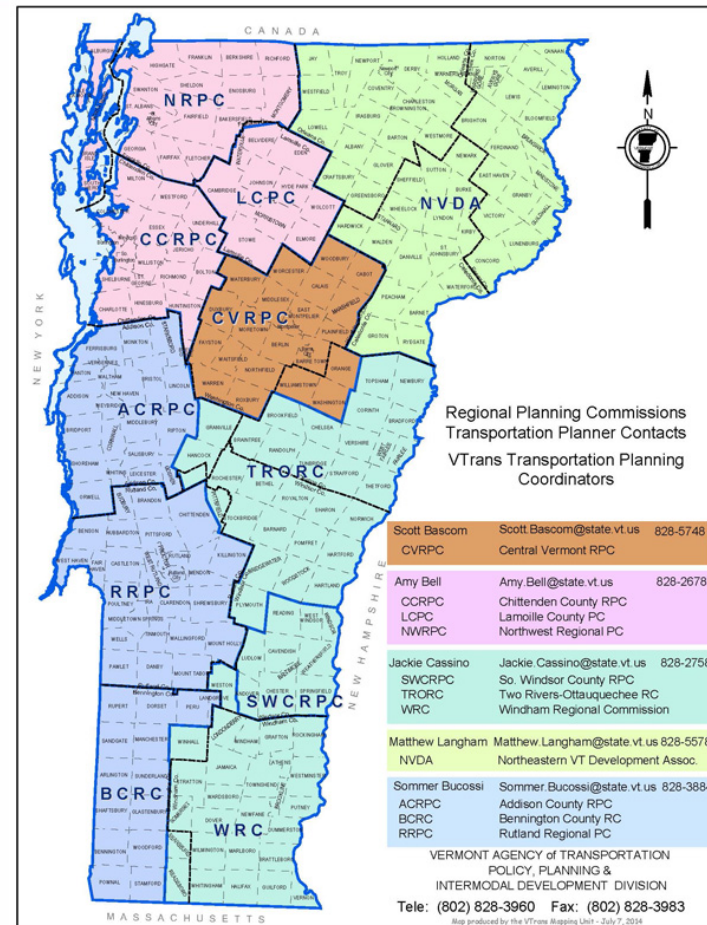
**POLICY, PLANNING & RESEARCH BUREAU
SFY 2016 BUDGET ALLOCATION**





Policy & Planning Section Transportation Planning Initiative

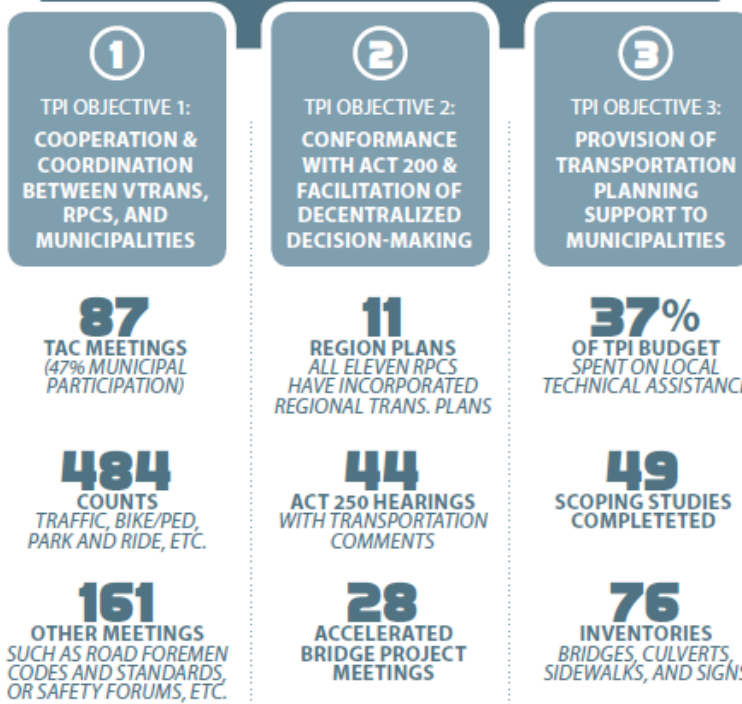
- Cooperation and coordination between VTrans, Regions and Municipalities
- Conformance with Act 200 and facilitating decentralized decision making
- Providing transportation planning support to municipalities





TPI Performance

2015 TRANSPORTATION PLANNING INITIATIVE BY THE NUMBERS



NOTES

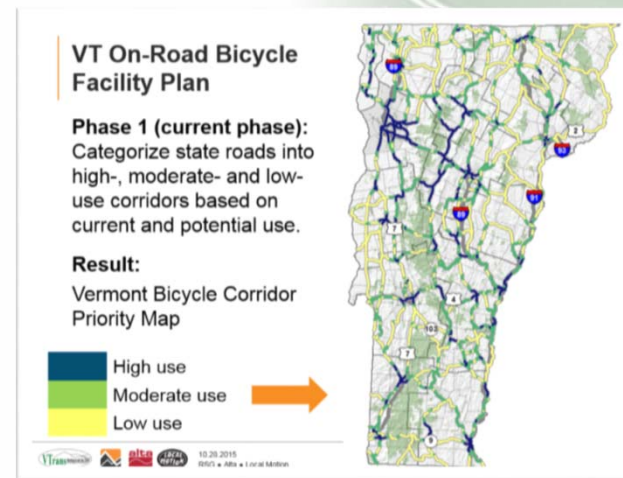
- (1) Source: VAPDA Annual Report, Fiscal Year 2015
- (2) Other meetings include: Road foreman, Codes & Standards, Lake Champlain TMDL Plan, Regional Safety Forums, Rivers & Roads & Public Transit E&D Studies





Policy & Planning Section

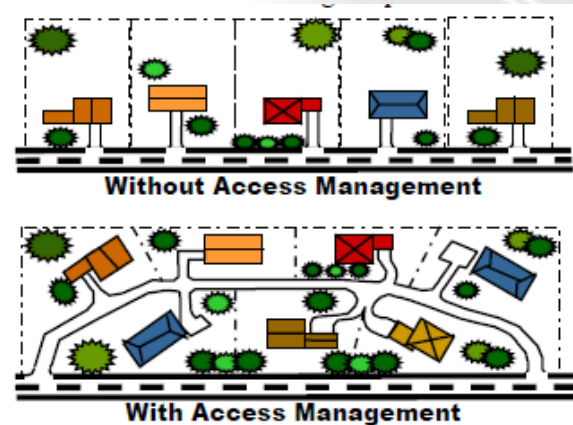
- Statewide Transportation Planning
- Corridor Planning
- Environmental Planning & Coordination
- Statewide Transportation Improvement Plan
- National & International Policy Coordination





Development Review & Permitting

- Act 250 Application Review
- Permits to Work in State ROW (19 VSA § 1111)





Research Section

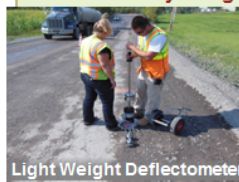
Materials and Research Section

WHAT WE DO

- Pavement and Subbase Research
- Bridge Monitoring
- Safety Product and Technique Evaluations
- Material Evaluations
- Field Evaluations and Testing
- Literature Searches
- Product Evaluations
- Technology Transfer and Training

RECLAIMED STABILIZED BASE WITH CEMENT RESEARCH

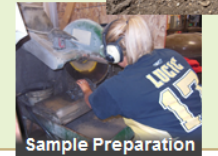
Clegg Impact Soil Tester
 Light Weight Deflectometer
 Falling Weight Deflectometer
 Nuclear Density Gauge



Light Weight Deflectometer



The Clegg



Sample Preparation



Reclaiming



Nuclear Density Gauge

BRIDGE MEMBRANE EVALUATIONS

Methyl-Methacrylate System
 Polyurethane System
 Chloride Testing
 Bridge Characterization
 Long-Term Monitoring



Applying an Experimental Deck Membrane



Chain Drag for Spalling



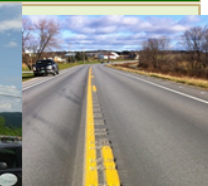
Placing Pavement Markings

SPECIAL REQUESTS

Installing Gauges



Sign Reflectivity Studies
 Centerline Rumble Stripe Sound Testing
 Studded Tire Research
 Concrete Repair Material
 Truck Weight Limits



Centerline Rumble Stripes

PAVEMENT MARKINGS

Pavement Marking Evaluations
 Approvals for New Marking Materials



Urban Street Markings



Color Testing



Symbol Markings

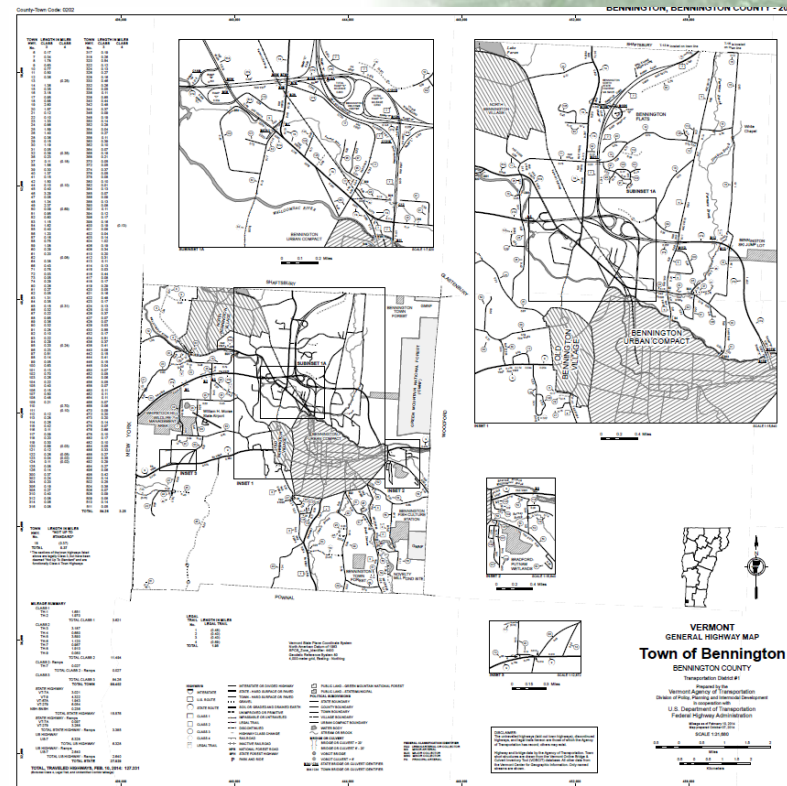


Retroreflectivity Testing



Mapping Section

- Town Highway Maps
- Annual Town Highway Mileage Certificates
- Maintains statewide road centerline GIS data used by municipalities, regions and state
- GIS and data analysis to support other agency activities





Contact Information & Functions

Section	Manager	Functions
Policy & Planning	Joe Segale, P.E./PTP 802-828-3968 Joe.segale@Vermont.gov	<ul style="list-style-type: none"> •Transportation Planning Initiative (RPCs) •Chittenden County MPO Coordination •Statewide Transportation Planning •Environmental Planning & Coordination •National & International Policy Coordination •Statewide Transportation Improvement Plan
Act 250 Development Review	Joe Segale, P.E./PTP 802-828-3968 Joe.segale@Vermont.gov	<ul style="list-style-type: none"> •Act 250 Traffic Impact Study Review •Corridor Planning
Highway Access Permits	Craig Keller, P.E.	<ul style="list-style-type: none"> •Permits to Work in State ROW (Section 1111 Permit)
Research	Joe Segale, P.E./PTP 802-828-3968 Joe.segale@Vermont.gov	<ul style="list-style-type: none"> •Material and methods testing •Agency research projects •UVM Research Project Management •Northeast and US National Research Programs
Mapping	Johnathan Croft 802-828-2600 Johnathan.croft@Vermont.gov	<ul style="list-style-type: none"> •Town highway maps and mileage certification •Route logs •GIS

