



Who we are:

- Green Mountain Power, the energy company of the future, is innovating and transforming services to customers
- As part of the customer-led energy revolution, GMP's eHome program helps customers achieve their energy goals to save money, increase comfort, and lower their carbon footprint
- GMP is committed to providing low-cost, low-carbon and highly reliable electric energy
- GMP is the first utility in the U.S. to get a B Corp certification, meeting rigorous social, environmental, accountability and transparency standards, and committing to use business as a force for good
- In 2013, the Solar Electric Power Association named GMP Utility of the Year
- In 2014, Vote Solar named GMP a Solar Champion
- Founded in 1893 as Vergennes Electric Company
- Headquarters in Rutland and Colchester, with 15 service centers around the state
- 560 employees, ~ 289 members of IBEW Local 300

Our customers

- We have 261,294 customers in 202 towns in a 7,500-square-mile service territory. (as of 10/1/2015)
 - 69 industrial customers
 - 39,732 commercial customers
 - 221,334 residential customers
 - 159 public street and highway lighting
- 92% GMP customer satisfaction rankings

Economic Contribution to Vermont

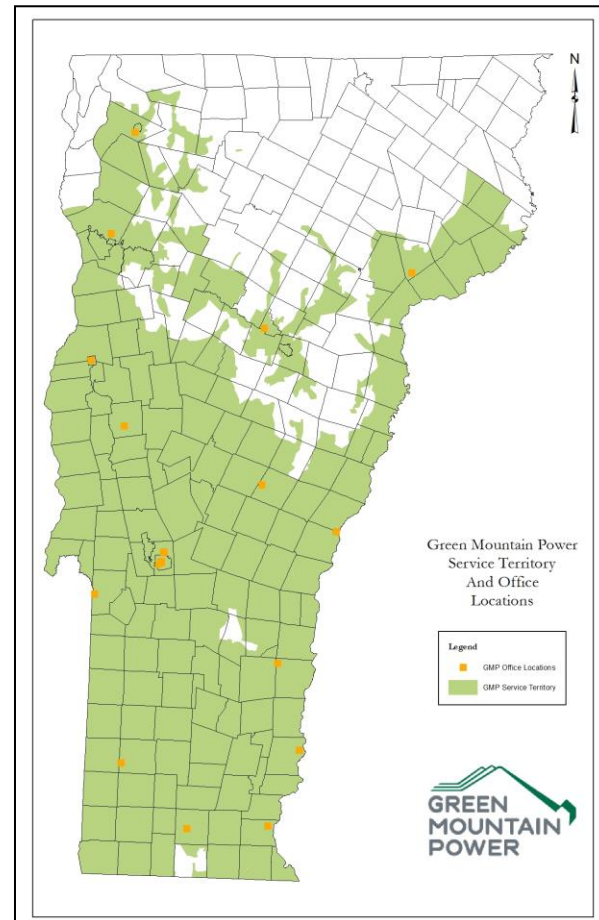
- Annual Property taxes: \$20,900,000
Paid to 210 Vermont communities
- Annual Gross revenue tax: \$6,200,000

Rates

- October 2014 saw a rate decrease of 2.46 percent
- October 2015 rate increase of .76% offset for residential customers by a onetime bill credit of 1.46% and reduction going forward of the Low Income Support program charge

Infrastructure

- 185 substations
- 329,580 poles,
- 976 miles of transmission lines, and 11,273 miles of distribution lines
- \$94 million in capital investments for FY15 on behalf of customers, with \$112 million planned for FY 2016
- Green Mountain Power rigorously inspects and maintains this infrastructure for optimal performance and reliability



Map: towns in GMP service territory and location of our facilities

Energy Innovation Center

- Staff at the EIC in downtown Rutland work with partners in the public and private sectors to introduce new products and services to transform the way our customers make the best energy choices possible, with the aim of increasing comfort while reducing cost and carbon.

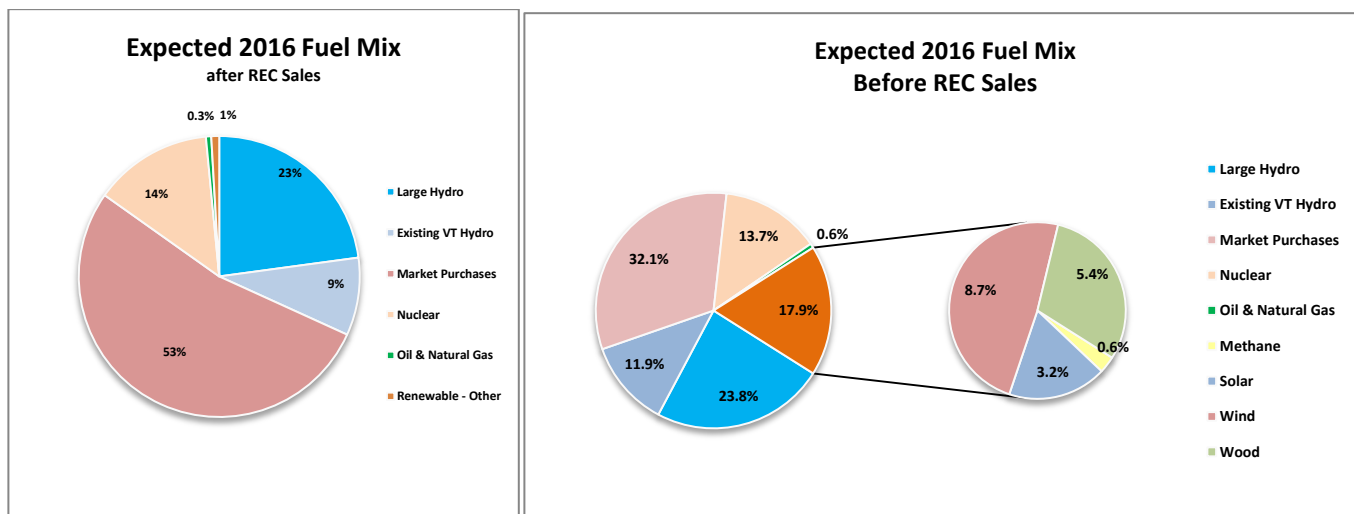
Energy Portfolio and Peak Demand

- GMP's customers used 4.3 million MWh of electricity in FY 2015

Peak Demand:

- GMP's peak demand in FY2015 was 707 MW on 1/8/15 between 6 p.m. and 7 p.m.

2016 Fuel Mix



Market Purchases do not have any environmental attributes associated with them, as such these purchases are treated as having the ISO-NE residual mix. The system residual mix changes over time but as of Q1 2015 it was primarily natural gas (37%), nuclear (36%), and oil (11%).

GMP-Owned Renewable Generation

- 100+ MW of hydro capacity, at 32 hydro facilities
- 3 MW of solar generation capacity, including Stafford Hill, which combines solar with storage
- 69 MW wind power capacity
 - 63 MW Kingdom Community Wind (8 MW of output is sold to Vermont Electric Coop)
 - 6 MW Searsburg
 - 3 100 kW NPS wind turbine in Vergennes, Bridport, and Ferrisburg

Net-Metered Generation

- 124.4 MW combined total for all net metered projects (built and in the queue) 1/7/16
 - (compared to 13.4 MW net metered projects as of 1/14/13)
- 112 MW is the 15% cap for GMP based on the 1996 peak load



Robert Dostis, Government & Stakeholder Relations

802-655-8412 / cell 802-279-1351 Robert.Dostis@greenmountainpower.com

1/12/16