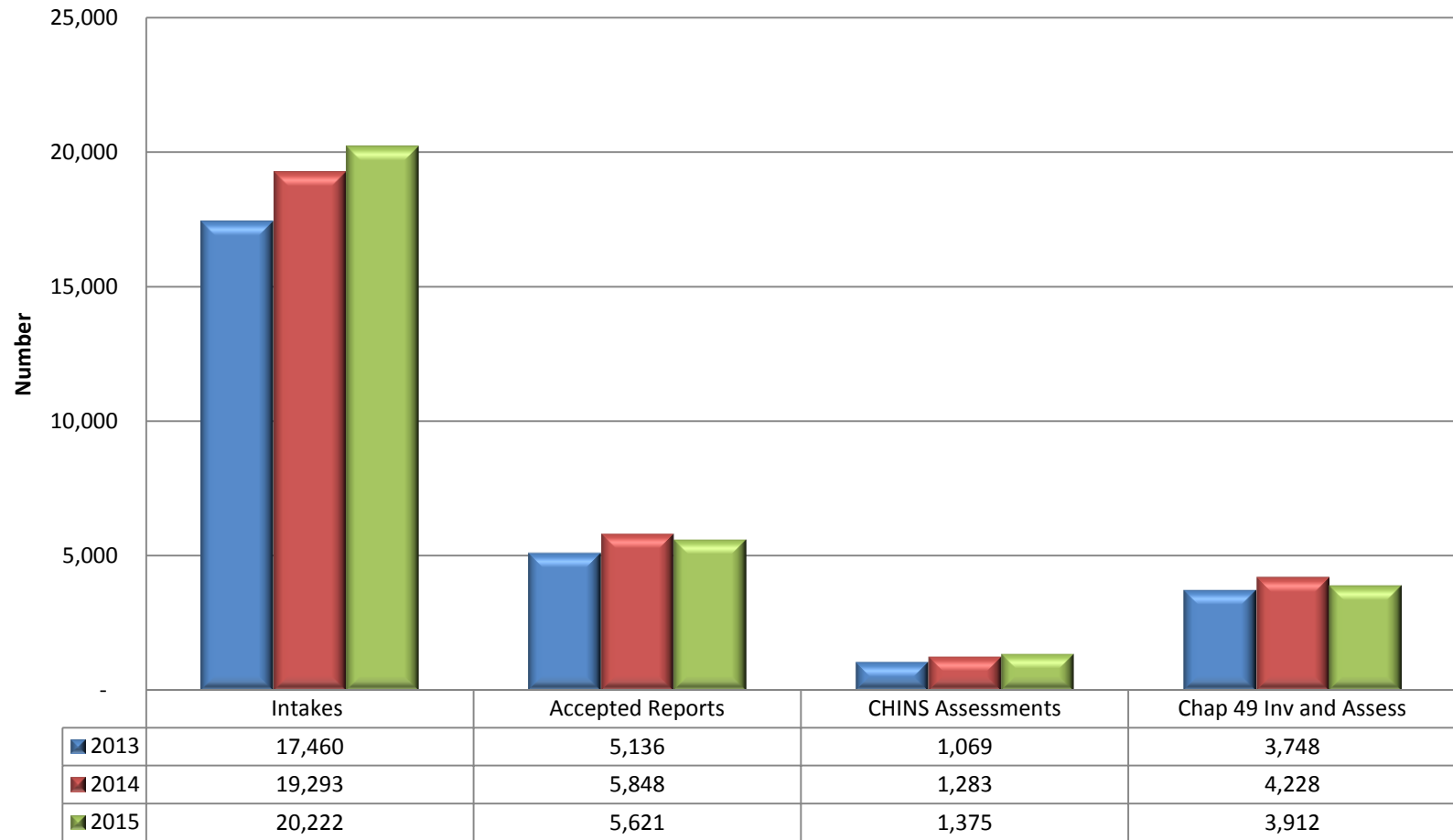
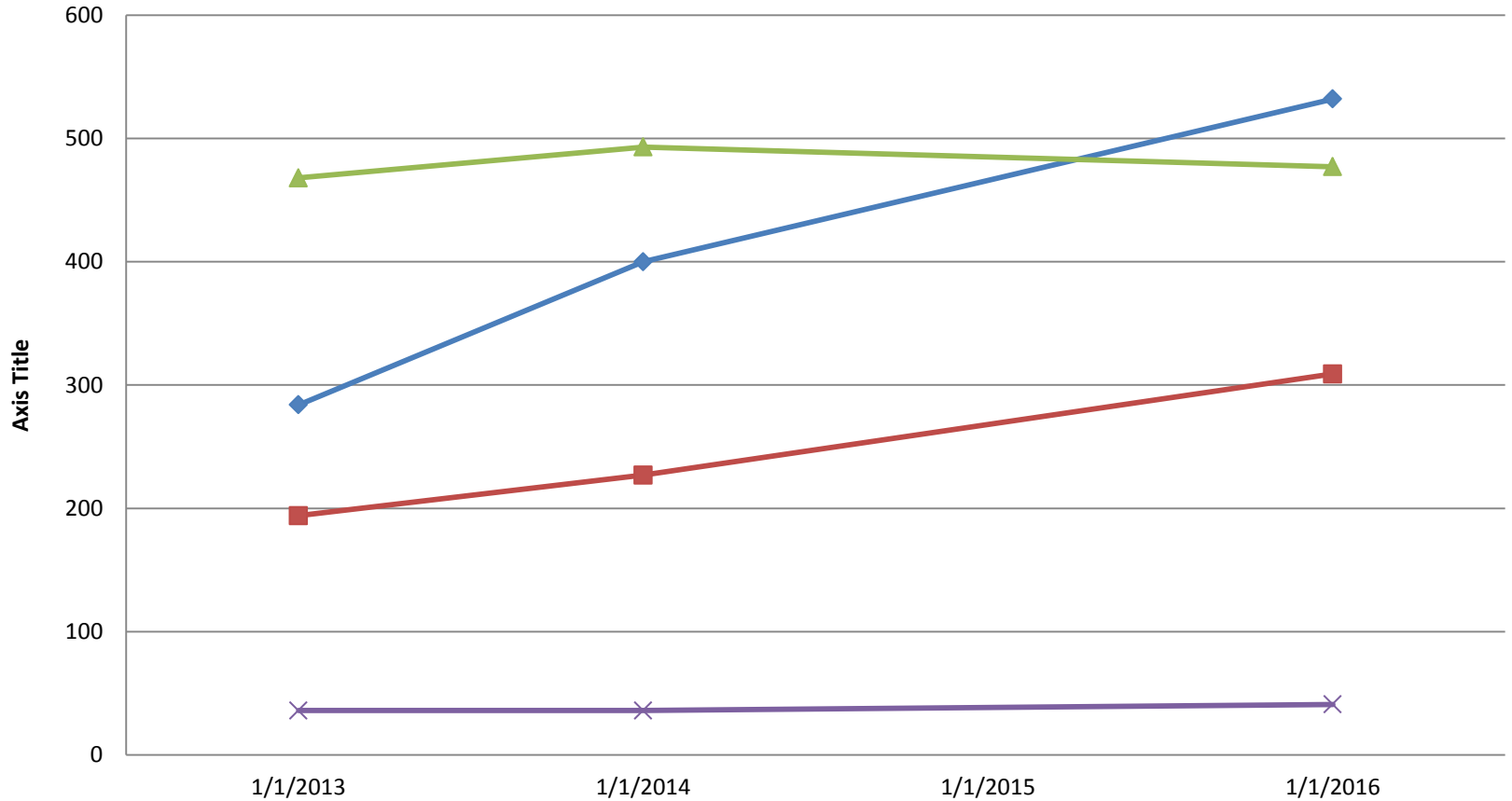


## Trends in Intakes/Reports Accepted for Intervention - 2013-2015

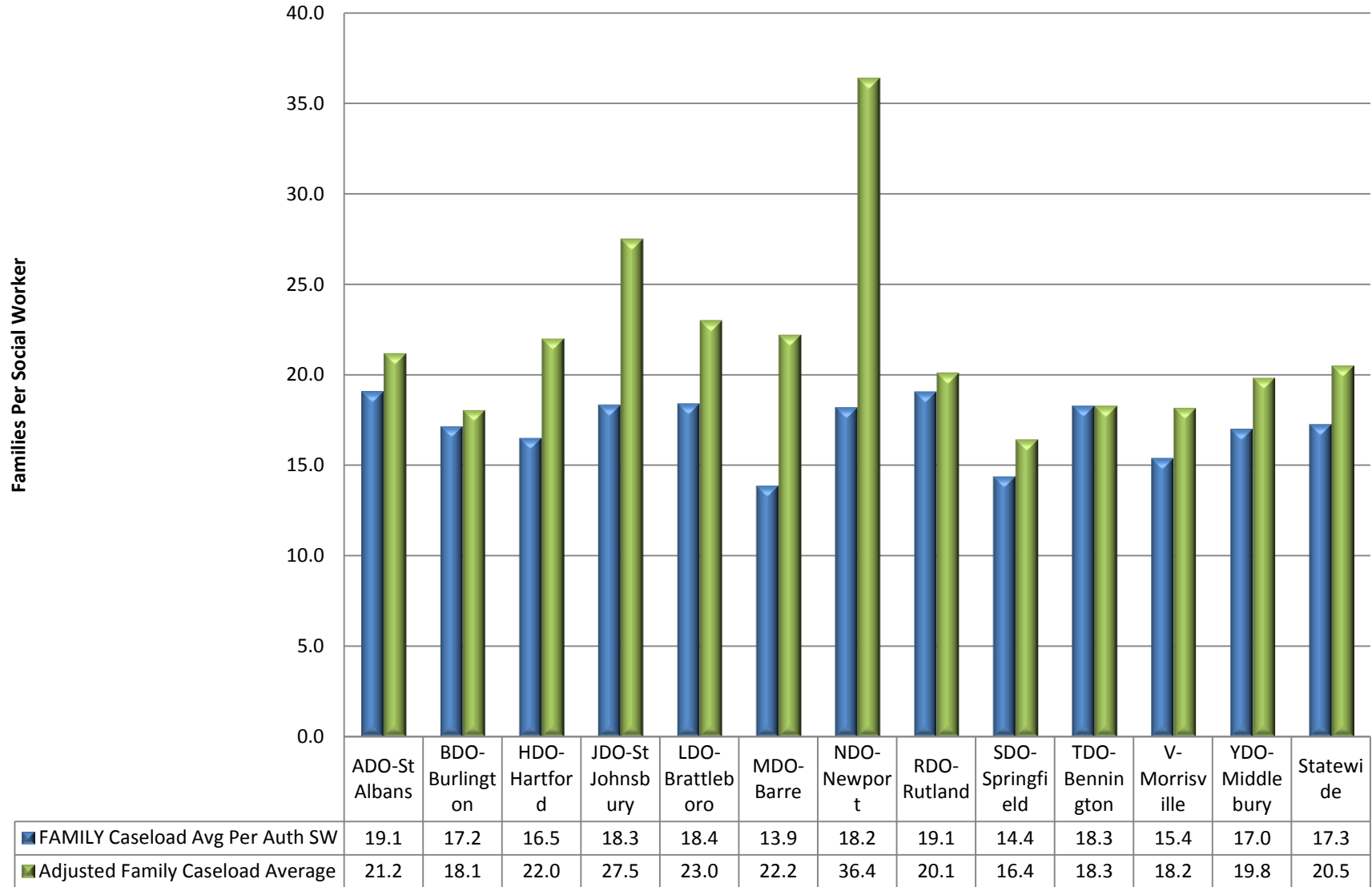


## Children in Custody by Age Group (Current Total = 1359)



	10/31/2013	10/31/2014	1/4/2016
◆ 0-5	284	400	532
■ 6-11	194	227	309
▲ 12-17	468	493	477
× 18+	36	36	41

## Family Caseload by Family Services District Office - 12/2015



## Percent Capacity to Serve Current Caseload - 12/2015

