



**STATE OF VERMONT**  
OFFICE OF LEGISLATIVE COUNCIL

**Witness Information**

**Handouts**

Please make sure to put a title, date, and your name on the top of each document submitted for testimony.

Copies of handouts must be emailed to Shannon Blake, [sblake@leg.state.vt.us](mailto:sblake@leg.state.vt.us), at least 24 hours before your scheduled time. In addition, please also bring 10 hard copies of your handout.

If you want copies made at the State House, there is a charge of \$.10 per printed side. State employees can use transfer numbers to pay for copies made at the State House. Any document you hand out to the committees is by law available to the public.

**ATTENTION- With few exceptions, any documents a witness submits to a committee or to a committee assistant are open to the public.**

**In addition, a witness' submission of a document authored by the witness or his or her organization constitutes consent to its posting on the committee's webpage, unless the witness specifically requests that the document not be posted. Although the committee will honor requests not to post such documents on its webpage, once a witness submits a document to the committee, it is a public record and will be subject to public inspection and copying unless exempt under the Public Records Act.**

The committee's information page is available at this url:  
<http://legislature.vermont.gov/committee/detail/2016/27>

The agenda for committees is updated continually. You can check the agenda at:  
<http://legislature.vermont.gov/committee/agenda/2016/49>

**Equipment**

If you require any special equipment or resources for your testimony, please notify the committee assistant as soon as possible so that arrangements can be made.

**Phone testimony**

If you have been approved to testify by phone, please provide the committee assistant with a working phone number at least 24 hours before your scheduled testimony time. The committee assistant will test this phone number to ensure connectivity. The committee will call you when ready.

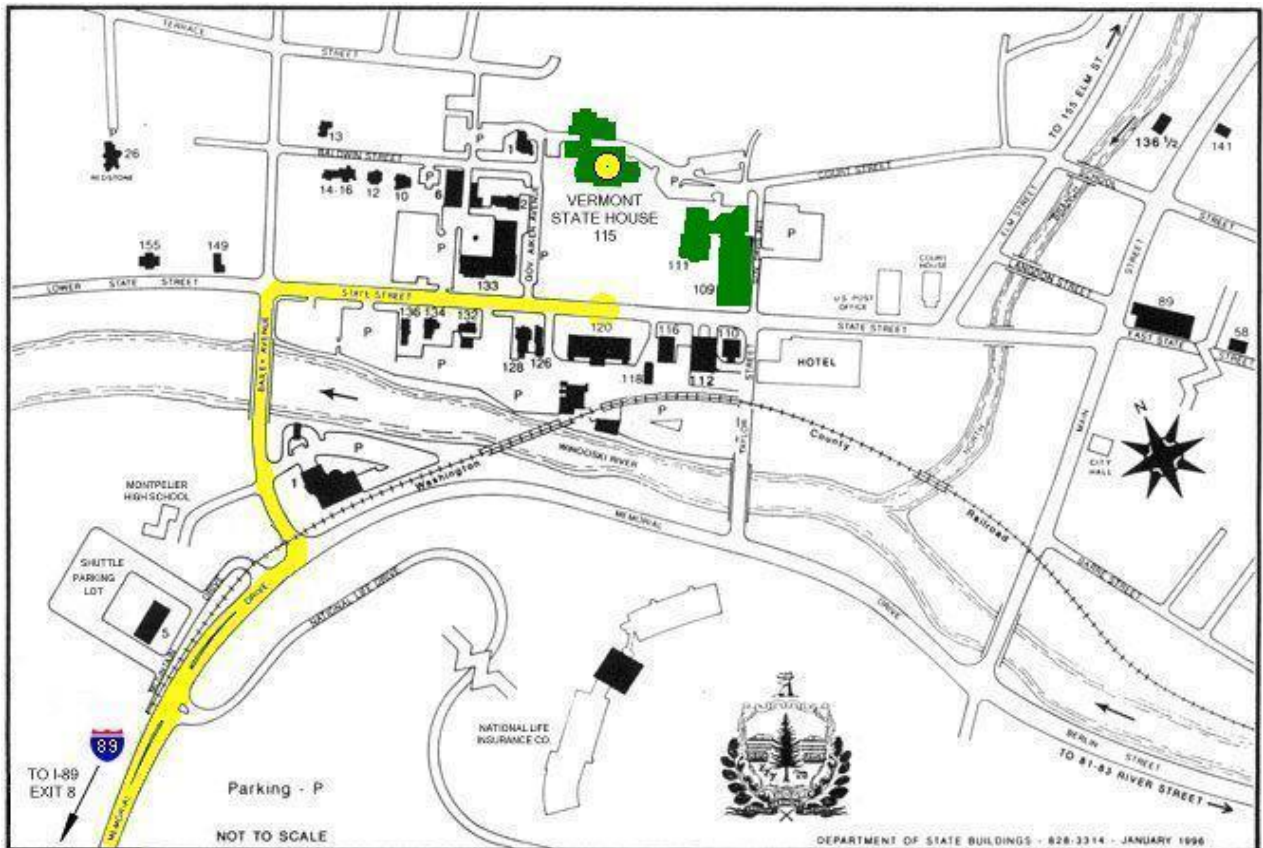
Information for Vermont Legislature Committee witnesses:  
 Here is information that might be helpful when you are a witness before the Senate or House Committees:

### What to bring with you

Bring copies of any handouts for committee (minimum of 10 for Senate Committees, 15-20 for House Committees). If you want copies made at the state house there is a charge of \$.10 per printed side. State employees can use transfer numbers to pay for copies made at the State House. Any document you hand out to the committees is by law available to the public.

### Driving Directions

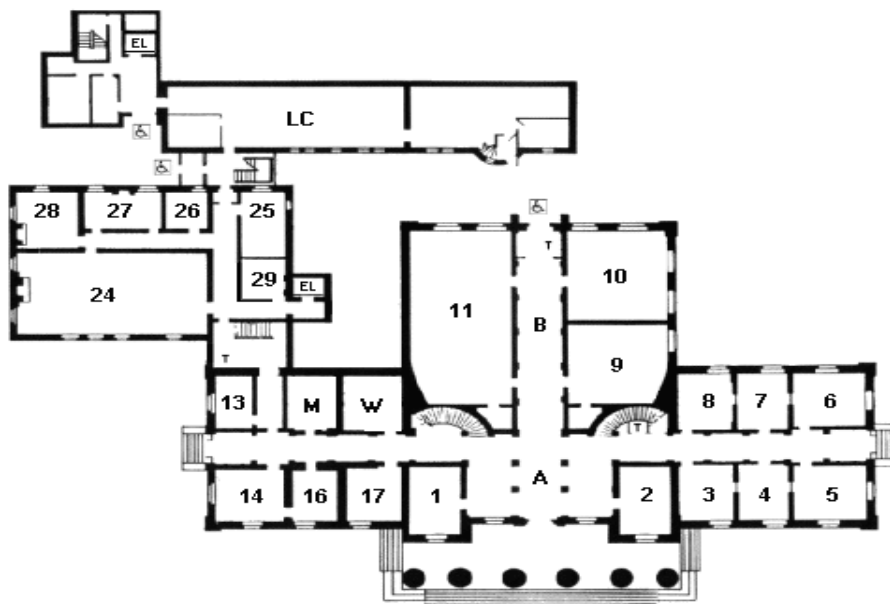
<b>From I-89:</b>	Take EXIT 8 toward US-2/MONTPELIER/ VT-12/ST. JOHNSBURY.	0.5 miles
1:	Merge onto MEMORIAL DR.	0.7 miles
3:	Turn LEFT onto US-2/BAILEY AVE	0.1 miles
4:	Turn RIGHT onto STATE ST/US-2 BR/THEODORE ROOSEVELT HWY.	0.2 miles
	Vermont State House, 115 State Street (on left)	0.2 miles



Parking is challenging during the legislative session. You can park on Montpelier streets for up to 2 hours at parking spaces that require quarters, dimes or nickels. There is a shuttle that runs from the parking lot in lower left hand corner of the map above, and also from National Life. The shuttle is free; schedules for the two routes are available online: <http://gmtaride.org/PDF/Web%20Schedules/88.pdf>


Here are floor plans for the three floors of the State House:

## Floor 1 (Entrance Floor)

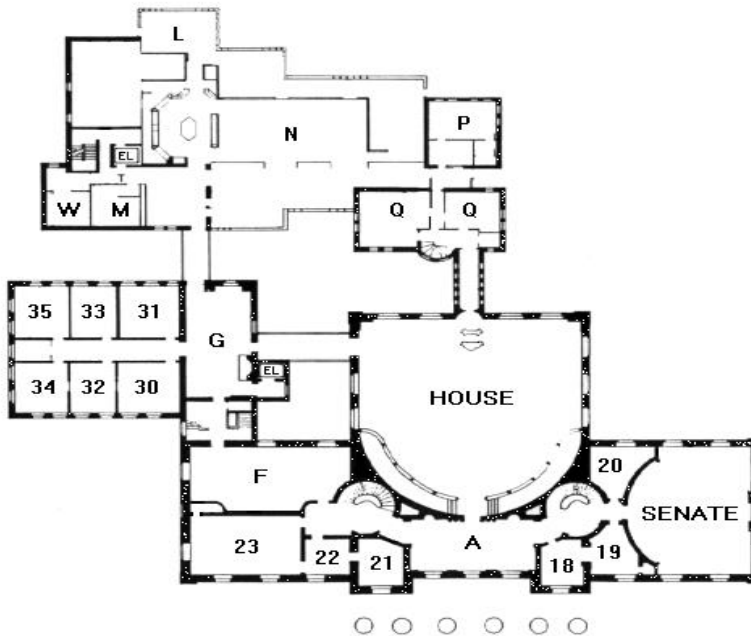


### Additional Information

ROOM	KEY
1	Senate Judiciary Committee
2	Sergeant-At-Arms
3	Senate Transportation Committee
4	Senate Government Operations Committee
5	Senate Appropriations Committee
6	Senate Finance Committee
7	Senate Institutions Committee
8	Senate Natural Resources and Energy Committee
9	Coatroom
10	Small Hearing Room
11	Large Hearing Room
13	President <i>Pro Tempore</i> of the Senate

- 14 Lt. Governor (President of the Senate)
- 16 Lt. Governor Staff
- 17 Senate Health and Welfare Committee
- 24 Legislative Lounge (Old Supreme Court Chamber)
- 25 Copy Center
- 26 Senate Agriculture Committee
- 27 Senate Economic Development, Housing, & General Affairs
- 28 Senate Education
- 29 Capitol Police
- A Lobby
- B Hall of Inscriptions (Lincoln Statue)
- LC Legislative Council
- T Public Telephones
- M&W Rest Rooms
- EL Elevator
-  Accessible Entrances

## Floor 2

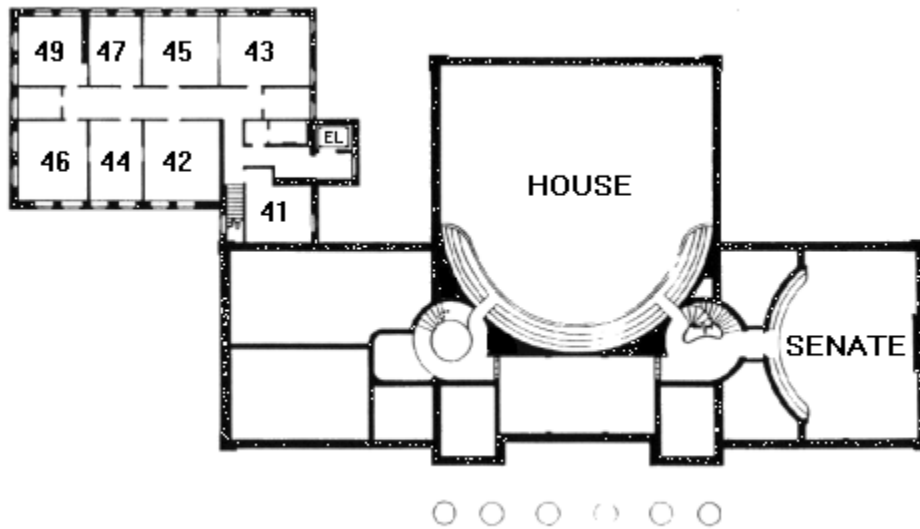


**ROOM**  
 HOUSE House Chamber  
 SENATE Senate Chamber

**KEY**

- 18 Secretary of the Senate
- 19 Secretary of the Senate
- 20 Senate Coatroom
- 21 Governor's Staff
- 22 Governor's Staff
- 23 Governor's Office
- 30 House Judiciary Committee
- 31 House Agriculture Committee
- 32 House Education Committee
- 33 House Corrections and Institutions Committee
- 34 House Ways and Means Committee
- 35 House Commerce and Economic Development Committee
- A House Vestibule (Hall of the Flags)
- F Cedar Creek Room
- L Ethan Allen Room
- N State House Food Court (Abbey Group)
- P Speaker of the House
- Q Clerk of the House
- T Public Telephones
- M&W Rest Rooms
- EL Elevator

### Floor 3



<b>ROOM</b>	<b>KEY</b>
41	House General, Housing and Military Affairs Committee
42	House Appropriations Committee
43	House Transportation Committee
44	House Natural Resources & Energy Committee
45	House Health Care Committee
46	House Human Services Committee
47	House Fish, Wildlife, and Water Resources Committee
49	House Government Operations Committee
HOUSE	House Chamber Balcony
SENATE	Senate Chamber Balcony
EL	Elevator

There is a coat room near the Sergeant-At-Arms Office in the center of the main floor. You can store outerwear there.

Occasionally we must cancel hearings. We will attempt to notify you as soon as we hear of cancellations or postponements.

If the weather is bad, you can testify by phone rather than chance dangerous driving conditions.

The agenda for committees is updated continually. You can check the agenda at <http://www.leg.state.vt.us> , then click

-Committee meetings and events

-House Standing Committee(or) Senate Standing Committee