

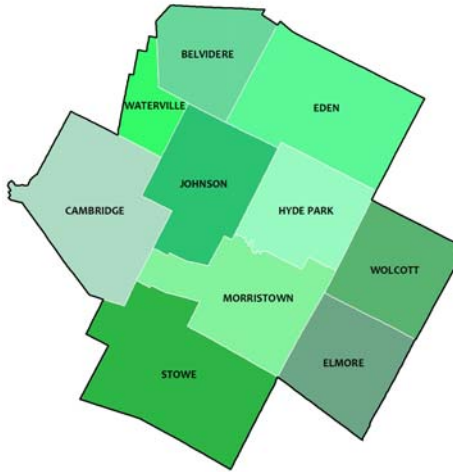


Lamoille County Conservation District

Conserving Our Natural Resources Since 1945

Lamoille County Conservation District, established in 1945, works with landowners, municipalities, schools, foresters and farmers across ten towns in Lamoille County. Extensive partnerships with local, state and federal agencies enable Districts to coordinate all available technical and financial resources on a local level.

PROGRAM PARTICIPATION	2015
Education Programs	1,522
Family & Public Programs	652
Junior Naturalist Programs	30
Summer Camp	53
Vermont Envirothon	110
Teacher Training	69
Service Learning Programs	278
Conservation Programs	89
TOTAL PARTICIPANTS	2,803



Natural Resource Concerns identified by the Local Working Group:

- Actions that address protecting Water Quality.
- Actions that address protecting Productive Forest and Farm Land.
- Preservation of Wildlife (terrestrial) and Aquatic Habitat.

District Activities: Provide funds for Agricultural Best Management Practices for small farms; Riparian Buffer Installations; Forest Health education for Landowners and Loggers; Partner with groups and municipalities to increase connectivity/corridor land management projects; Explore funds for invasive species management.

LCCD Supervisors
 Charles Davis, Hyde Park, Chair
 Michelle Gudorf, Edén, VC
 Fran Sladyk, Hyde Park
 JoAnne Ring, Hyde Park
 Peggy Struhsacker, Morrístown

Natural Resource Concerns identified by Partnerships:

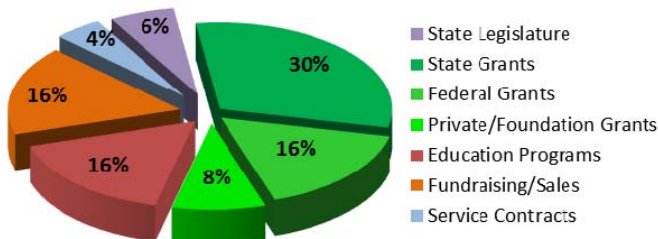
Actions that address water quality concerns based on information from the Lake Champlain Basin Program's Opportunities for Action Plan, the Lamoille River Basin Plan, and River Corridor Plans.

District Activities: Aquatic Organism Passageway including culvert or bridge replacement/retrofits; Green Stormwater Infrastructure Implementation; Providing erosion and sedimentation control equipment for local municipalities.

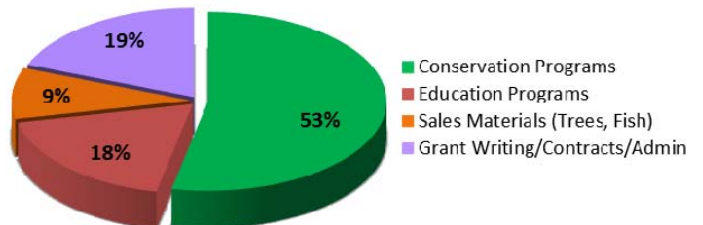
Revenue Sources and Expenses for Lamoille County Conservation District: Fiscal Year 2014-2015

Lamoille County Conservation District received \$8,600 from the State of Vermont in 2015 through NRCC. LCCD leveraged \$11 for every \$1 provided for **our community conservation** from grants, partners, foundations, and private donations. Volunteers also provided a total of \$33,102 based on Independent Sector Value in Vermont (1,529 hours).

2014-2015 Income



2014-2015 Expenses

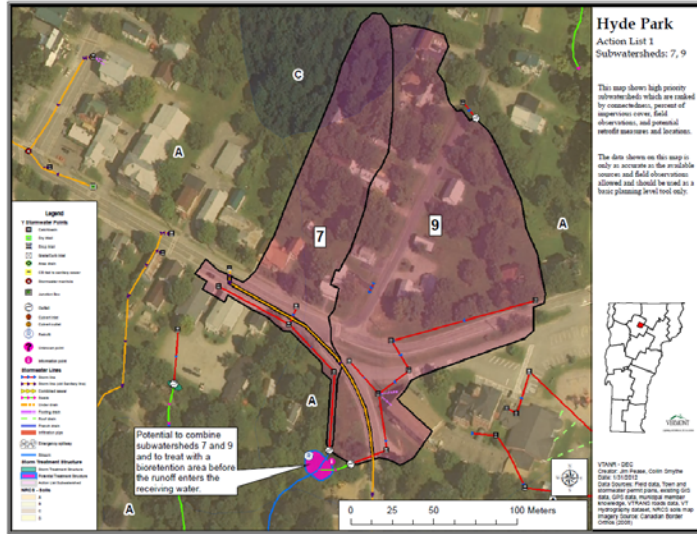


Grant Sources include ANR Ecosystem Restoration Program; ANR Vermont Watershed Grants; Lake Champlain Basin Program; Lake Champlain Tributaries Restoration Fund; and Vermont Community Foundation

SNAPSHOT of LOCAL COMMUNITY PROJECTS FY15

The Lamoille Sub-Watershed Restoration Project

Stormwater remediation project development and implementation is taking place for three stormwater sub-watersheds in Morrisville, Hyde Park, and Johnson to reduce phosphorus loading into the Lamoille River. LCCD uses technical resources from the ANR such as Stormwater Plans, River Corridor Plans, and Tactical Basin Plans as guidance to select and prioritize projects in the County. Stormwater Remediation Projects are professionally engineered and constructed using contemporary methods to produce tangible and long lasting results. Projects for the Town of Hyde Park, Johnson State College, and Stowe Elementary School and businesses are underway.



Connecting the Mid-Lamoille for Aquatic Organism Passage/Culvert Project

Complementing the work based on the Lamoille Sub-Watershed Restoration Project, LCCD identified many high priority failing culverts and bridges in need of replacement and in the next year will work with the towns of Eden and Hyde Park, LCPC, and fish and wildlife biologists and river scientists to complete engineering studies for construction.



Lamoille County Nature Center on Cole Hill Road

LCCD is committed to conservation education and outreach as demonstrated by our mission. While under the auspices of LCCD, Lamoille County Nature Center (LCNC) in Morrisville provides the primary delivery mechanism for conservation, environmental education, and service-learning projects in Lamoille County through schools, libraries, scout groups, and other educational organizations.

