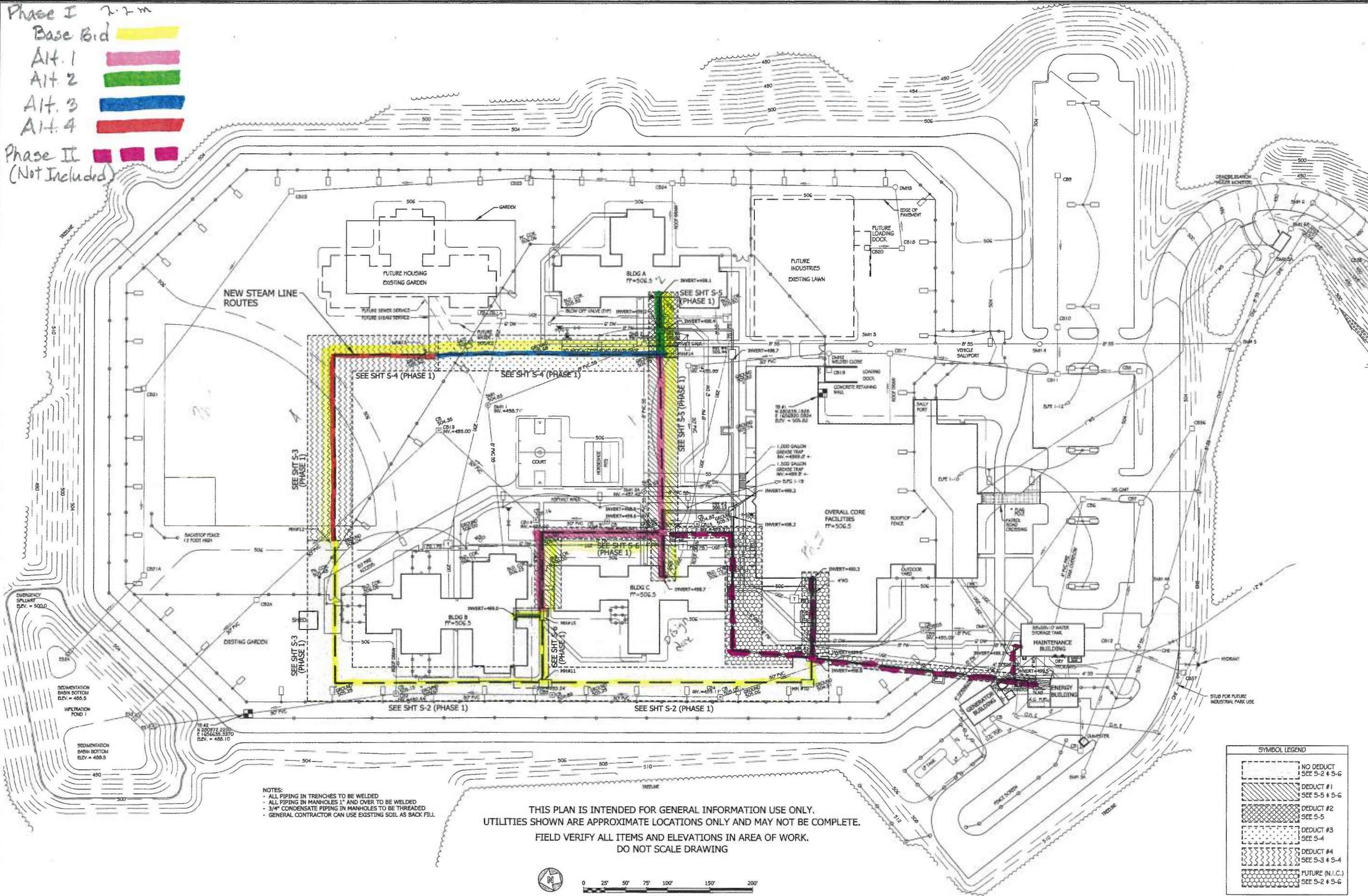
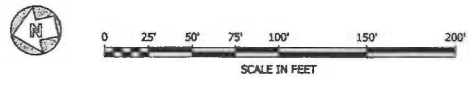


- Phase I 2'-2" = 1'
- Base Bid
- Alt. 1
 - Alt. 2
 - Alt. 3
 - Alt. 4
- Phase II (Not Included)



NOTES:
 - ALL PIPING IN TRENCHES TO BE WELDED
 - ALL PIPING IN MANHOLES 1" AND OVER TO BE WELDED
 - 3/4" CONDENSATE PIPING IN MANHOLES TO BE THREADED
 - GENERAL CONTRACTOR CAN USE EXISTING SOIL AS BACK FILL

THIS PLAN IS INTENDED FOR GENERAL INFORMATION USE ONLY.
 UTILITIES SHOWN ARE APPROXIMATE LOCATIONS ONLY AND MAY NOT BE COMPLETE.
 FIELD VERIFY ALL ITEMS AND ELEVATIONS IN AREA OF WORK.
 DO NOT SCALE DRAWING



SYMBOL LEGEND	
[Dashed line pattern]	NO DUCT SEE S-2 & S-6
[Diagonal hatching pattern]	DUCT #1 SEE S-5 & S-6
[Cross-hatching pattern]	DUCT #2 SEE S-5
[Dotted pattern]	DUCT #3 SEE S-4
[Wavy hatching pattern]	DUCT #4 SEE S-3 & S-4
[Hexagonal pattern]	FUTURE (N.I.C.) SEE S-2 & S-6



STATE OF VERMONT
 Department of Buildings
 and General Services
 Agency of Administration
 Montpelier, Vermont



SOUTHERN STATE CORRECTIONAL FACILITY
 STEAM LINE REPLACEMENT
 SITE PLAN

REVISIONS
 ADDENDUM #2

SCALE: 1" = 50'
 DATE: JANUARY 2015
 DRAWN BY: SKJ/KZJ/RBH
 APPR. BY: T. SOUTHWORTH

SOUTHERN STATE CORRECTIONAL FACILITY
 STEAM LINE REPLACEMENT
 SITE PLAN

S-1