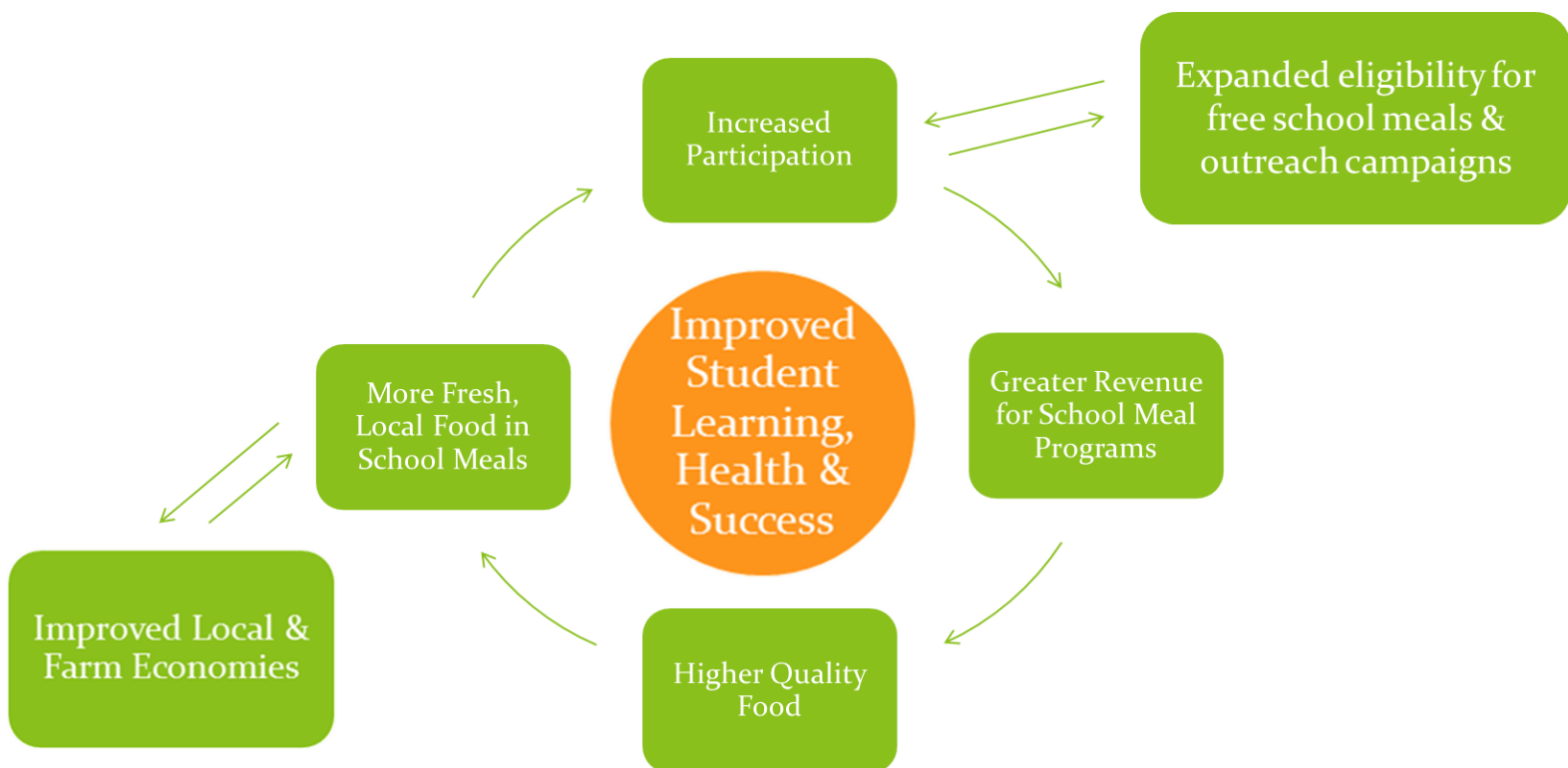


The Farm To School—School Meal Program “Virtuous Cycle”

Improve Child Nutrition, Reduce Child Hunger
& Strengthen Local Economies



- Adding fresh, local foods to school meals improves quality and participation.
- Increased participation means school meal programs have more resources for purchasing and processing local food.
- Strong school meal programs ensure that low-income children don't go hungry.
- All kids get better nutrition and learn to love new foods—creating localvores for life.
- Local farmers get new orders.

Farm To School strengthens Child Nutrition.



Support Farm to School Grants for
the Health of Vermont's Children, Schools & Farms!

