



Adult Protective Services Program
Data Report for November 2013

Submitted to: Senator Dick Sears, Senate Committee on Judiciary
Senator Claire Ayer, Senate Committee on Health and Welfare
Rep. William Lippert, House Committee on Judiciary
Rep. Ann Pugh, House Committee on Human Services

Submitted by: Susan Wehry, Commissioner, AHS/DAIL 
From: Clayton Clark, Director, DLP 
Prepared by: Veda Lyon, Program Chief, Adult Protective Services
Report Date: December 6, 2013

Attached please find the November 2013 monthly data for the Adult Protective Services (APS) program.

In November 2013 APS received a total of 296 reports.

- A. Of the total reports received:
- 1) 88 (30%) were referred to the Survey and Certification Unit for screening and further action. Of these:
 - a) 48 were reports of resident to resident/ patient to patient abuse; and
 - b) 40 were complaints about a licensed facility.
 - 2) Of the remaining 208 (70%) reports:
 - a) 108 (52%) were opened for investigation; and
 - b) 92 (44%) were closed as contacts, including three (3) reports related to cases opened by prior report and/or previously investigated; and ten (10) reports of self-neglect involving a person aged 60 or older.
 - c) 8 (4%) were pending determination.
- B. November reports were down from October's, although overall reporting remains well above the first few months of 2013. For the eleven month period between January – November 2013 APS received 3,272 reports.
- C. Caseload details:
- 1) The average weekly Investigator caseload was 37 compared to 40 in October. Caseload size is impacted by assigned region, type of investigations assigned and number of investigative staff. (Note: The two APS Field Supervisors split their time between investigative duties and supervisory responsibilities).

Notes:

- a) The northwest region typically accounts for a higher volume of reports than other regions of the state. This results in a higher number of investigations and larger caseloads.
 - b) Cases of financial exploitation and/or those conducted as joint investigations with law enforcement often remain open longer than other types of investigations.
- 2) In November the weekly average number of open cases was 372, higher than the average for the past six months. We anticipate returning to a lower average caseload size in the next reporting period with the APS program fully staffed.

D. Investigation Closures:

- 1) 97 investigations were completed in November (compared to 99 in October and 93 in September). Of completed investigations:
 - a) 11 (12%) were closed as Substantiated.
 - b) 86 (88%) were closed as Unsubstantiated.
 - c) 8 names were placed on the Adult Abuse Registry.

APS November 2013 Data/Report
Data Source: Harmony

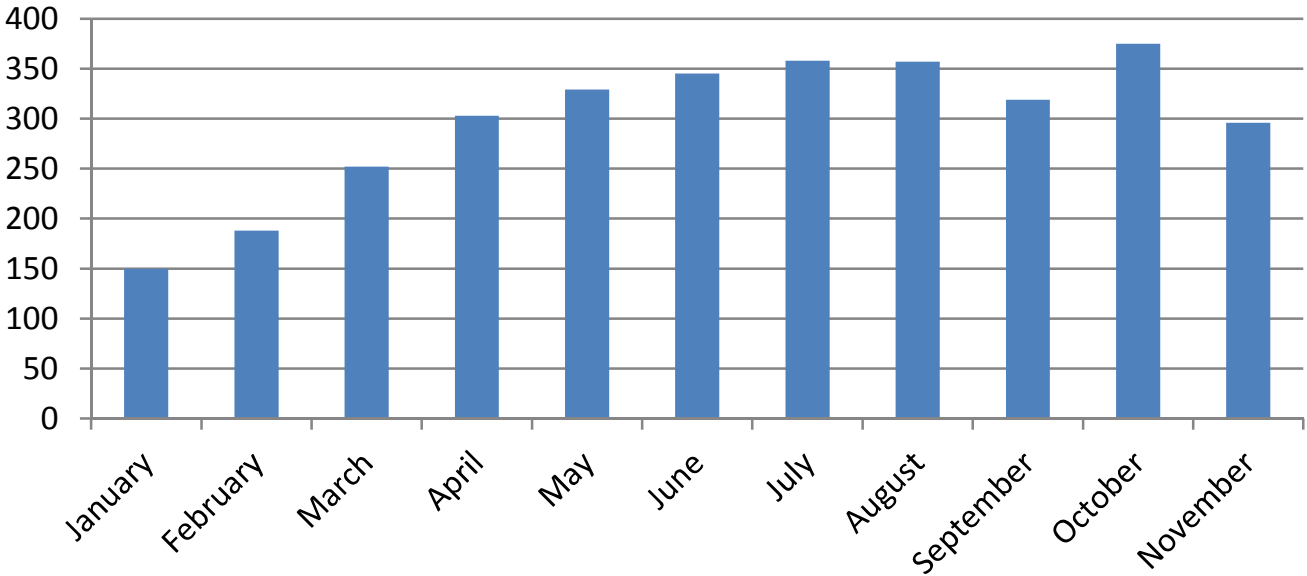
APS Program Data for 2013

	JANUARY		FEBRUARY		MARCH		APRIL		MAY		JUNE	
Intakes Entered	150		188		252		303		329		345	
Intakes Referred to Survey & Certification												
Licensed Facility Resident to Resident Reports												
Closed Contacts (Upon Screening)	73	51%	90	52%	148	60%	189	65%	195	62%	214	64%
Self Neglect Over 60												
Incident Already Investigated												
Investigations Assigned	69	49%	84	48%	99	40%	101	35%	122	38%	124	36%
Completed Investigations	90		70		70		69		76		86	
Substantiated	9	10%	10	14%	7	10%	11	16%	7	9%	12	14%
Unsubstantiated	81		60		62		58		68		74	
Perpetrators placed on registry	20		3		9		14		4		29	
Total Open Cases (Weekly Average)	173		187		213		240		295		327.4	
Case Load (Weekly Average)	13		14		16		21		27		30	
Range for 2013	10 - 65											

	JULY		AUGUST		SEPTEMBER		OCTOBER		NOVEMBER	
Intakes Entered	358		357		319		375		296	
Intakes Referred to Survey & Certification					118		124	33%	88	30%
Licensed Facility Resident to Resident Reports					54		50		48	
Closed Contacts (Upon Screening)	231	65%	226	63%	216	68%	226	60%	181	61%
Self Neglect Over 60							15		10	
Incident Already Investigated							7		3	
Investigations Assigned	125	35%	127	36%	97	30%	147	39%	106	36%
Completed Investigations	118		123		93		99		97	
Substantiated	18	15%	11	9%	11	12%	13	13%	11	13%
Unsubstantiated	100		112		82		86		86	
Perpetrators placed on registry	2		14		14		4		8	
Total Open Cases (Weekly Average)	344.9		361		341.93		358.87		371.83	
Case Load (Weekly Average)	36		35.5		34.193		39.87		37.18	

SFY	2006	2007	2008	2009	2010	CY12	2013YTD
% of Intake Investigated	63%	44%	50%	40%	45%	48%	38%

Intakes Entered



% of Intakes Investigated

