

# Program Development Division's Year in Review



HOUSE TRANSPORTATION COMMITTEE  
JANUARY 9, 2014

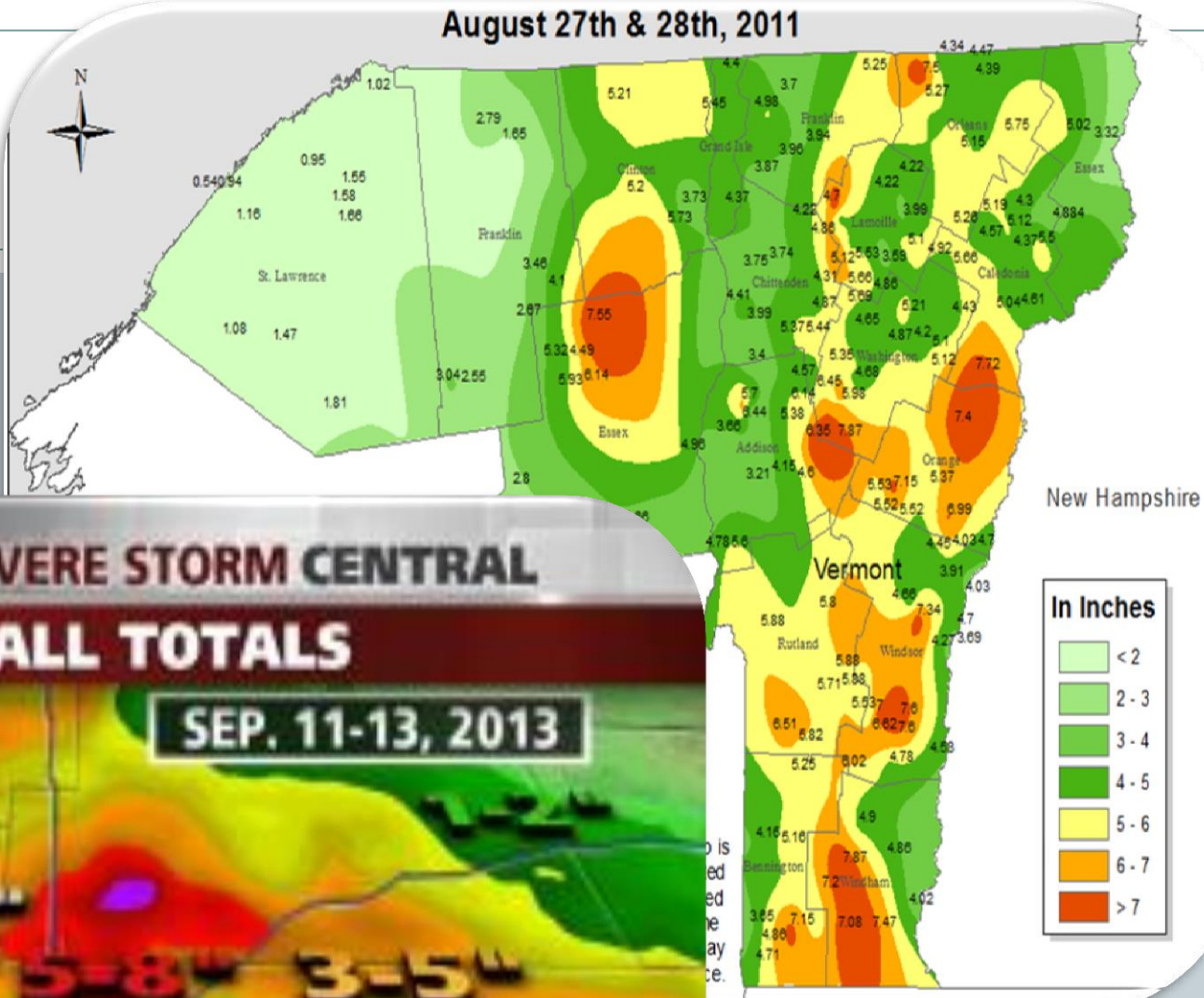
**Richard M. Tetreault, P.E.**  
**Director/Chief Engineer**



**VTRANS TRIP TO  
COLORADO  
HOW DID WE HELP?**

# THE RAIN

August 27th & 28th, 2011

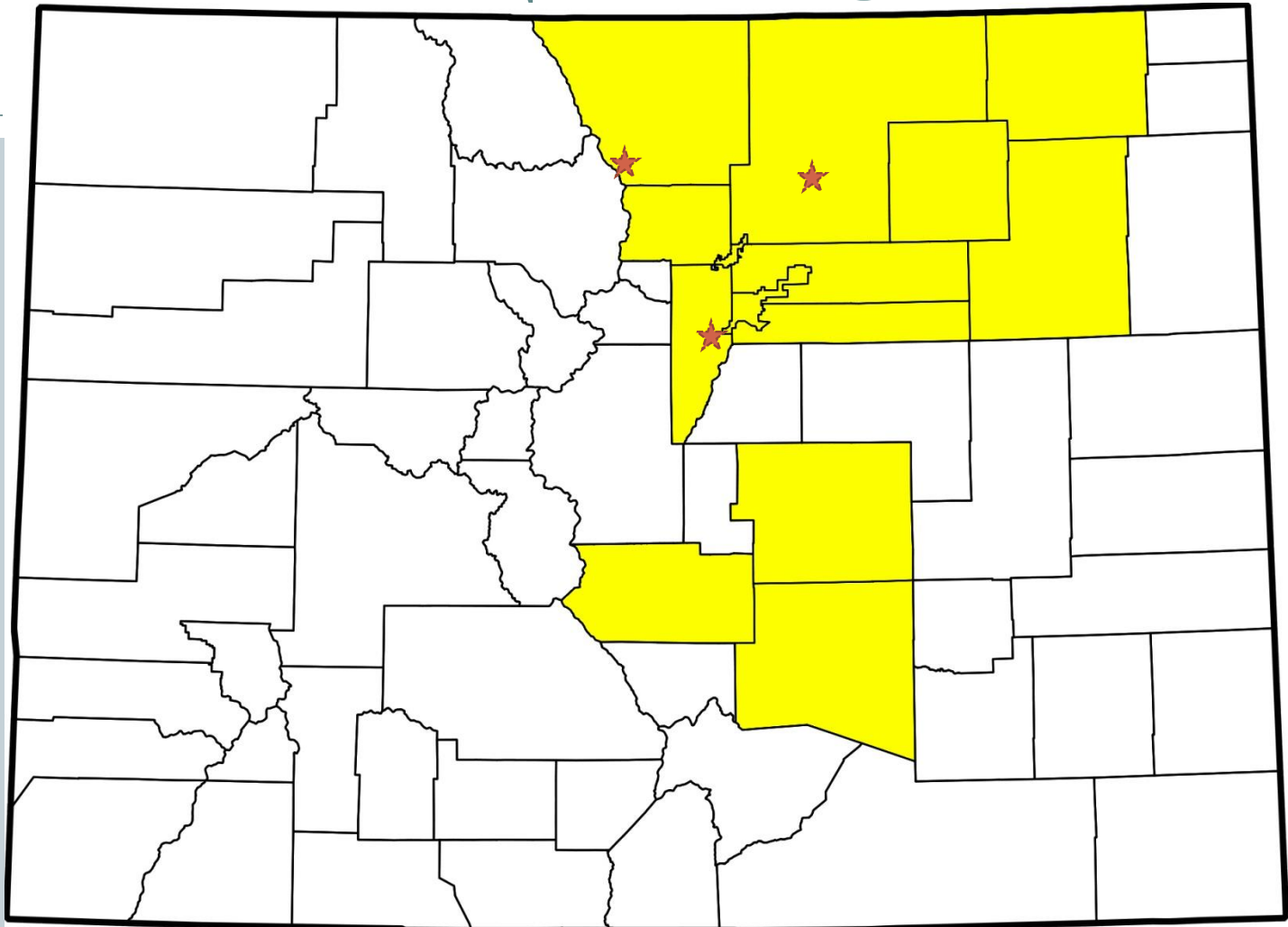


## SEVERE STORM CENTRAL RAINFALL TOTALS

SEP. 11-13, 2013



# THE IMPACT



County map of Colorado highlighting **14 counties** declared disaster emergencies on September 13, 2013 by Colorado Governor, John Hickenlooper

# THE CALL FOR HELP

5

The call for help from Colorado Governor to Vermont Governor ~ Saturday, September 14, 2013



Rich Tetreault

Sue Minter

Scott Rogers

VTrans boots on the ground in Colorado ~ Monday, September 16, 2013 for the week.



WELCOME TO  
COLORFUL  
COLORADO

# GETTING STARTED IN CO

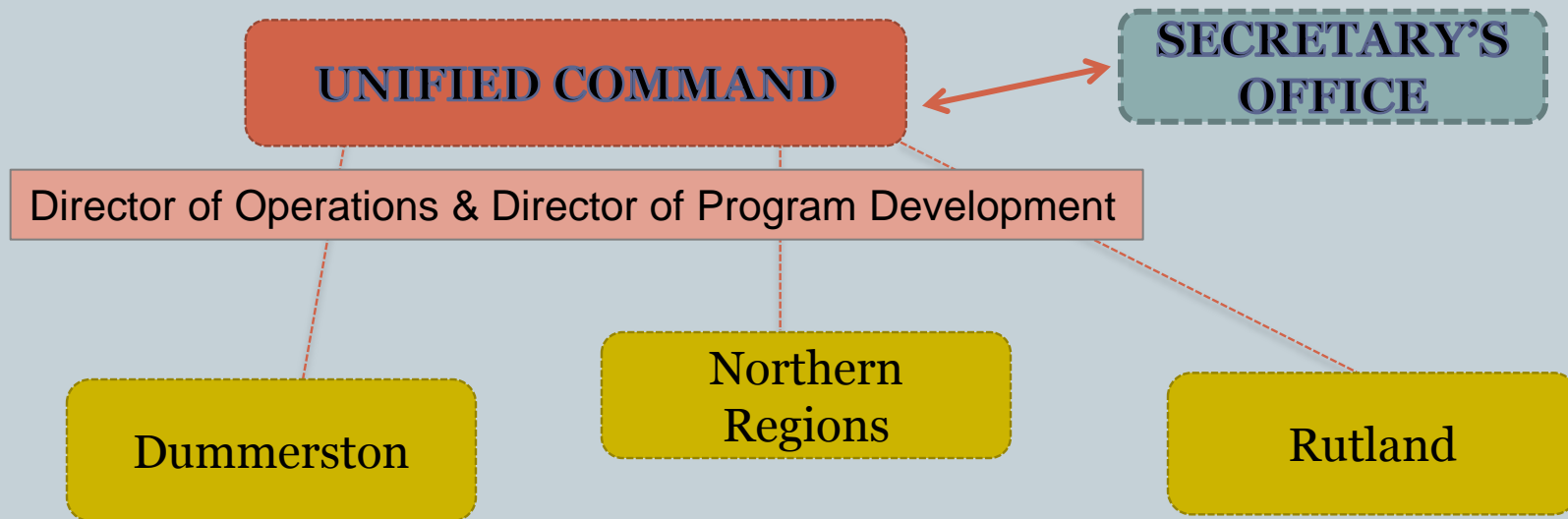
7



# VT ICS (INCIDENT COMMAND SYSTEM)

8

The ICCs are operated by a Unified Command (UC) in Montpelier. The UC role was to set priorities, provide overall management through directives, and take the lead on communication and public information. The UC was given direction by the Secretary's Office.





# VT GOALS




9

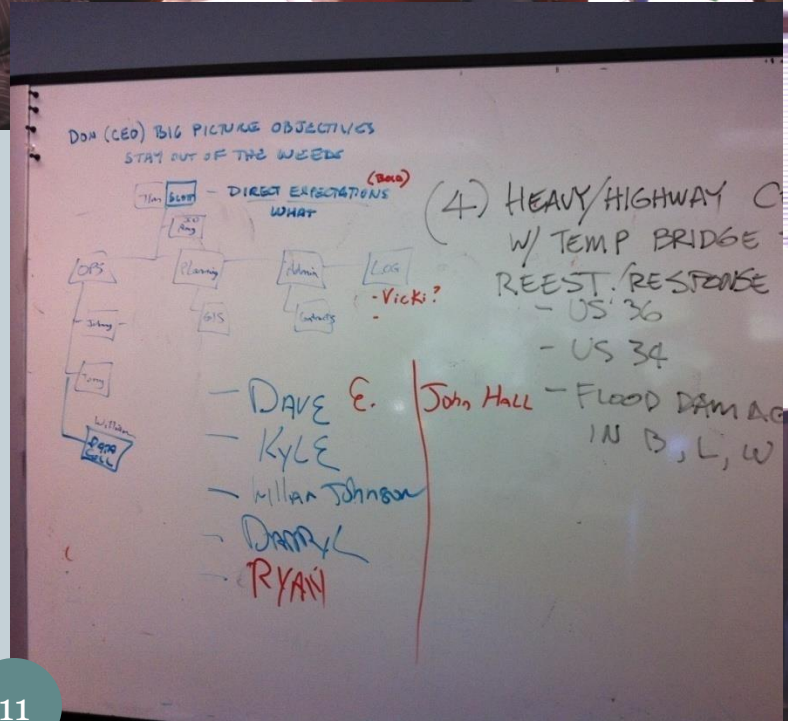
- ✔ **Establish emergency access to cutoff/isolated towns & locations within communities**
- ✔ **Establish access for utility companies to restore power to areas that are still cut off**
- ✔ **Establish mobility (public access) to towns that currently have emergency access only**
- ✔ **Establish mobility along East/West corridors (to include truck traffic/commerce)**
- ✔ **Inspect all bridges of concern**
- ✔ **Prepare state roads for winter operations**

# VT MISSION: COMMUNICATION

10

*To aid the public in obtaining up-to-date information AOT...*

- Established a Call Center (1-800-Vermont) with 20 lines
- Established a dedicated IRENE e-mail address
- In partnership with  established a Damage Map
- Updated AOT Web ([www.aot.state.vt.us](http://www.aot.state.vt.us)) twice daily
- Established social media: Facebook  & Twitter 
- Provided regular press and media announcements
- Established contacts with RPCs to aid in local assistance
- Ongoing communication with Agency partners: ACCD, VDTM, ANR, DEC, BGS, and Governor's Office



# GETTING STARTED IN CO

12











**CDOT Announces Creation of Infrastructure Recovery Force**  
September 19, 2013 - Statewide Transportation Plan - **Focus to repair and reconstruction damage by December 1.**







**IT WAS ALL  
SO EERILY**



**FAMILIAR**

# VT RTE 107 STOCKBRIDGE





← Flood damage  
west of Boulder  
September 17, 2013.

*Joe Amon/The Denver Post via Getty Images*

Another road →  
shows very similar flood  
damage as the road pictured  
above.



# JCT OF VT 100 AND VT 73 B-19



# WELD COUNTY, COLORADO



September 17, 2013  
Photo: Rick Wilking/Reuters

# US 4 BRIDGEWATER TO RUTLAND





# GREELEY, COLORADO



# TOWN HIGHWAY BRIDGE #11 IN BRAINTREE OVER RIFORD BROOK



# LONGMONT, COLORADO



Photo: JOHN WARK/Reuters/Corbis

Sep 23, 2013

# KILLINGTON SKI RESORT



DIGITALGLOBE

# BOULDER, COLORADO

29



29

Photo: U.S. Air National Guard/Handout via Reuters

# COLORADO DOT COMMISSION

30



# COLORADO'S "THANK YOU"

31



# A TAXI LINE – NO KIDDING!

32

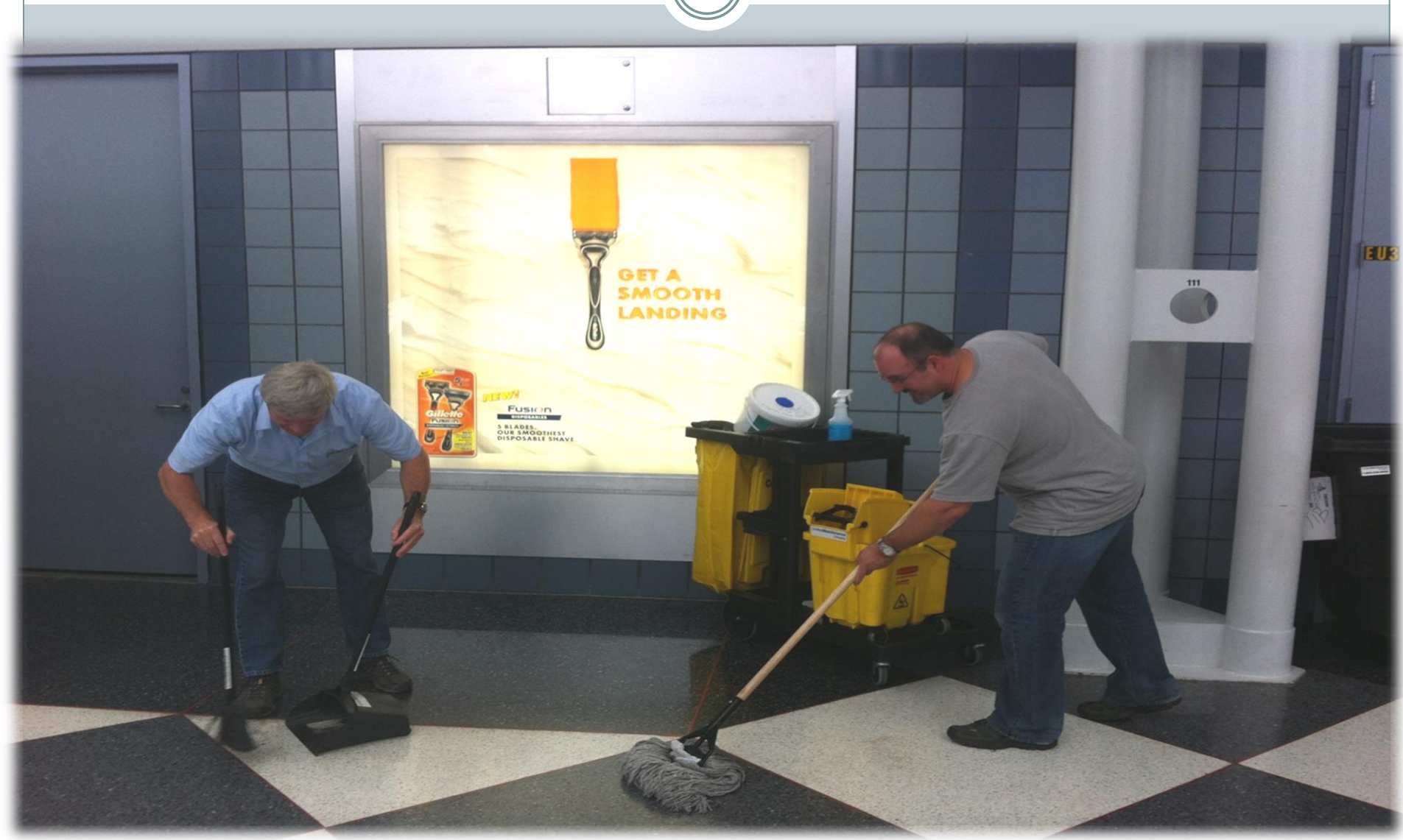




# O'HARE DAY 2!!

## NEW SANITATION ENGINEERS

33

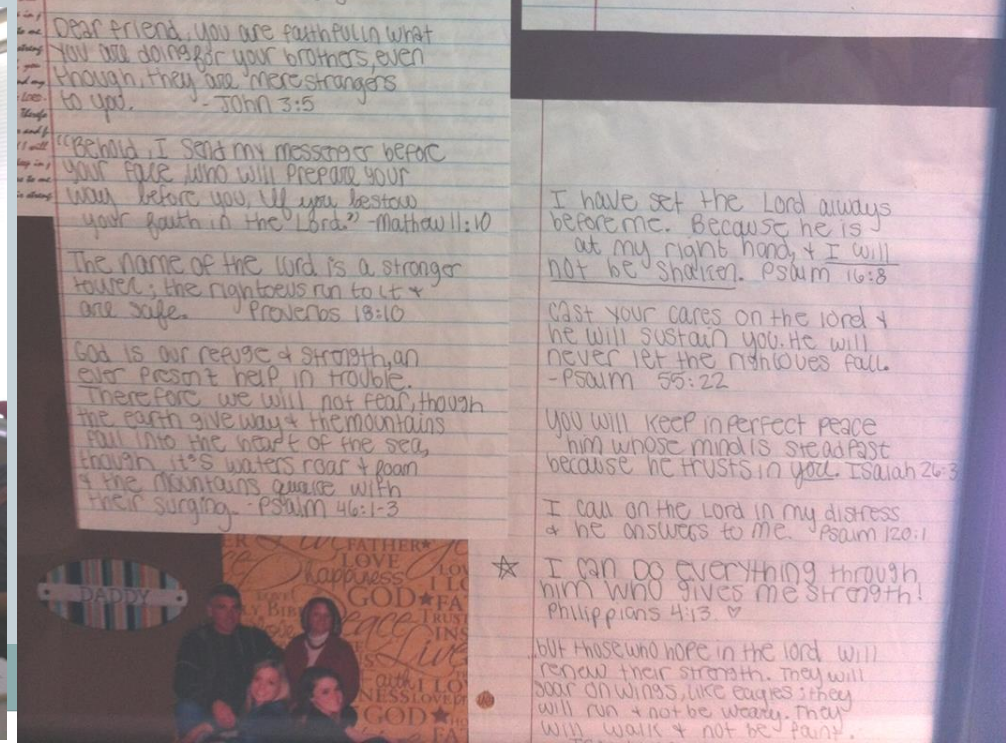
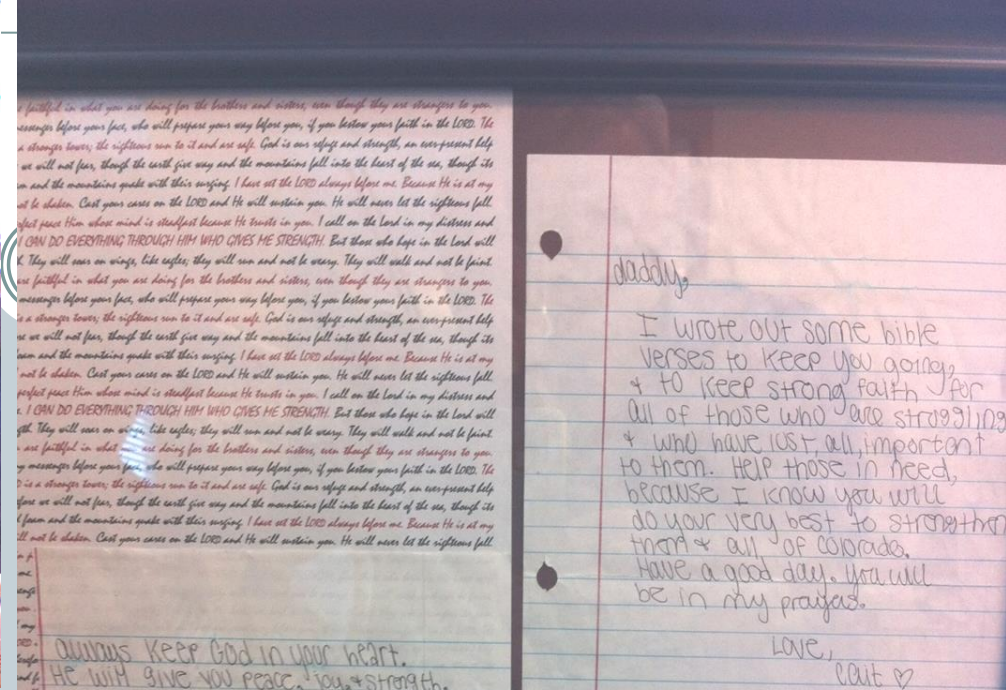
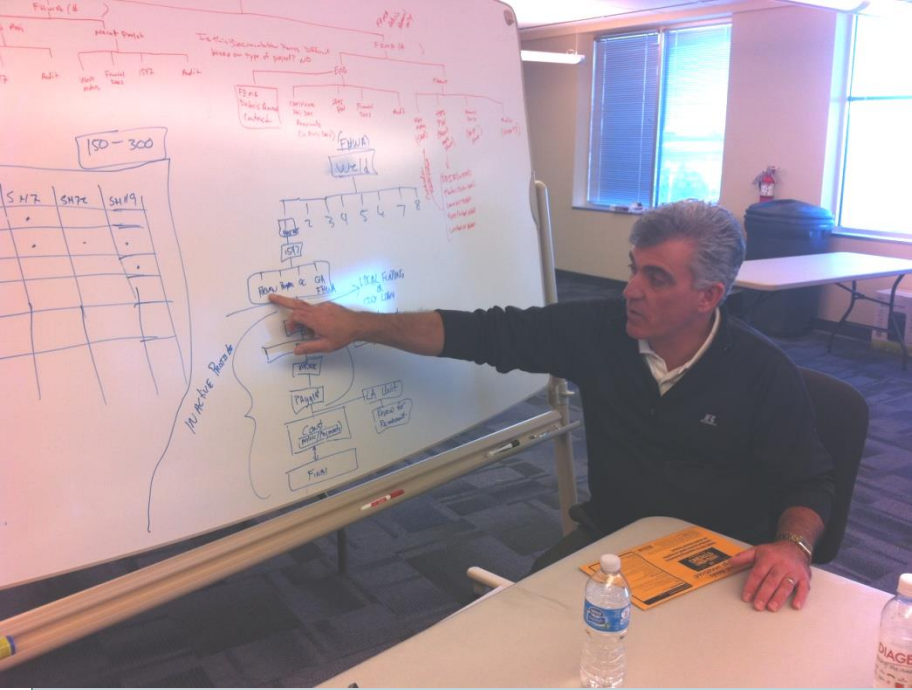


# COLORADO STRUCTURE

## OCTOBER 16, 2013

34





# October 22, 2013 Update



Taking care to get you there

36

<http://www.coloradodot.info/travel/colorado-flood-highway-updates>

## Quick Links

- Travel Center
- CDOT Maintained Park-n-Rides
- Colorado's Chain Up Tips
- Colorado Rest Areas & Welcome Centers
- Colorado Scenic Byways
- Commercial Vehicle Travel
- Eisenhower Tunnel
- Get Connected
- How do I ...
- I-70 Continuous Flow Metering at the Eisenhower Tunnel
- Map of Colorado Chain Up Stations
- Maximum Grades on Colorado Mountain Passes
- Scheduled Lane Closures
- Tolling in Colorado
- Travel in Neighboring States
- Winter Driving
- Colorado Flood Highway Updates**

## Colorado Flood Highway Updates

Please note that the closures below are only for highways. Cities, counties and towns may have closed additional roads in your area. The newest openings and closures are at the top of each category. When traveling, please do not stop on the highways to view the water or roadway damage. For more information [click here](#) or to speak to someone directly, please call 720-263-1589. For toll-free call 1-800-999-4997. For accessibility: 711 or 800-659-3656.

**\*Due to downed fencing, please watch for livestock on all highways in northeast.**

### Recent Highway Openings

- SH 72 (Indiana Street) between 72nd Avenue and 80th Avenue
- SH 39 between Goodrich and I-76
- SH 119 between Boulder and Nederland in Boulder Canyon

### New/Updated Closures

No new closures at this time.

### Ongoing Closures In Northeast Colorado

- SH 144 between U.S. 34 and Weldona

### Ongoing Closures in Northern Colorado

- U.S. 34 between CR 27 and Estes Park
- US 34 Business between 20th Street to US 34 Mainline in Greeley
- U.S. 36 between SH 66 and Estes Park
- SH 7 between Lyons and Raymond
- SH 66 westbound at US 36 - no travel into Lyons

### Ongoing Closures in the Denver Metro Area

- SH 72 between SH 93 and SH 119 in Coal Creek Canyon

# LESSON LEARNED: TAKE CARE OF EMPLOYEES

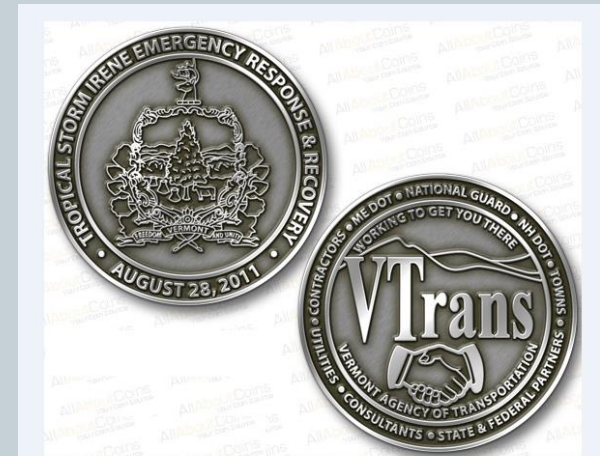
37

## ➤ “ICS STAND DOWN SYNDROME”

- EAP ~ *Employee Assistance Program meetings, group and individual*
- BROWN BAG LUNCHES ~ *weekly open sessions*
- IRENE TASK FORCE ~ *interviews, surveys, opportunity to be heard*

## ➤ EMPLOYEE APPRECIATION

- Challenge Coin, Irene Recovery Hat
- Celebration with song & laughter



# ROADS AND RIVERS TRAINING PROGRAM

38

- The Tier One training module can be accessed through the following link:  
<http://wsmd.vt.gov/rivers/roadstraining/>
- The class is expected to take approximately 1.5 to 2 hours to complete, and it is free of charge.
- This training is recommended for engineers, technicians, equipment operators, highway foreman and others. Please feel free to share it with anybody who might be interested in learning more about how river systems work.

# PERFORMANCE MANAGEMENT & GOVERNMENT ACCOUNTABILITY



VERMONT'S GOVERNMENT ACCOUNTABILITY COMMITTEE  
OCTOBER 29, 2013

**Sue Minter**  
**VTTrans Deputy Secretary**  
&  
**Richard M. Tetreault, P.E.**  
**Director/Chief Engineer**

# VTRANS STRATEGIC PLAN

40

## ***MISSION***

Provide for the safe and efficient movement of people and goods.

## ***VISION***

A safe, reliable and multimodal transportation system that promotes Vermont's quality of life and economic wellbeing.

## ***GOALS***

1. Provide a safe and resilient transportation system in an environmentally responsible manner
2. Preserve, maintain and operate the transportation system in the most cost effective and efficient manner.
3. Provide Vermonters energy efficient, travel choices/options.
4. Provide quality customer service
5. Develop a workforce to meet the strategic needs of the Agency



# **IRENE: GOAL SETTING PUBLIC ACCOUNTABILITY**

41

- ✓ **Establish emergency access to cutoff/isolated towns & locations within communities**
- ✓ **Establish access for utility companies to restore power to areas that are still cut off**
- ✓ **Establish mobility (public access) to towns that currently have emergency access only**
- ✓ **Establish mobility along East/West corridors (to include truck traffic/commerce)**
- ✓ **Inspect all bridges of concern**
- ✓ **Prepare state roads for winter operations**

# PERFORMANCE MEASUREMENT & ACCOUNTABILITY

42



**Vermont Agency of Transportation**  
Program Development – Structures Section

## 2013 Annual Report

Interstate Bridge Program  
State Highway Bridge Program  
Town Highway Bridge Program



Brattleboro I-91, bridge #6S – VTrans' 1<sup>st</sup> Design-Build Project



## HIGHWAY SAFETY & DESIGN

Annual Report  
2013 Legislative Session



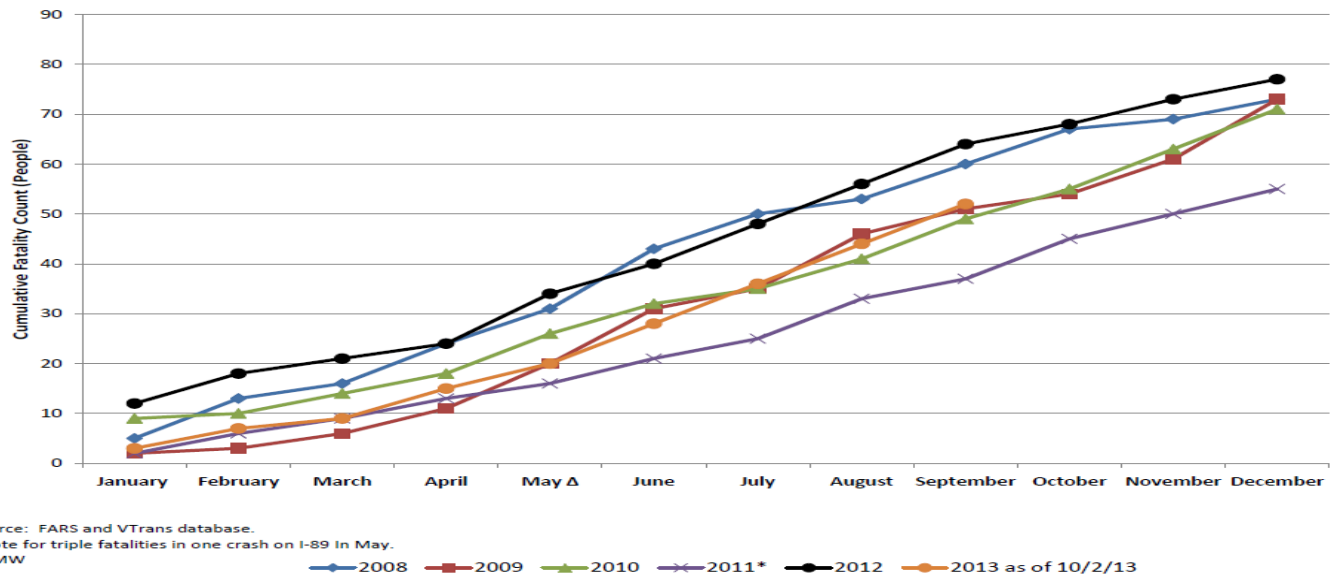
# PERFORMANCE MEASURE: SAFETY

A multi-agency and partner approach (Vermont Safety Alliance) is focused on reducing fatalities. VTTrans established the Alliance to formalize the multi-agency approach.

Highway fatalities per 100 million miles traveled



Fatalities: Yearly Cumulative



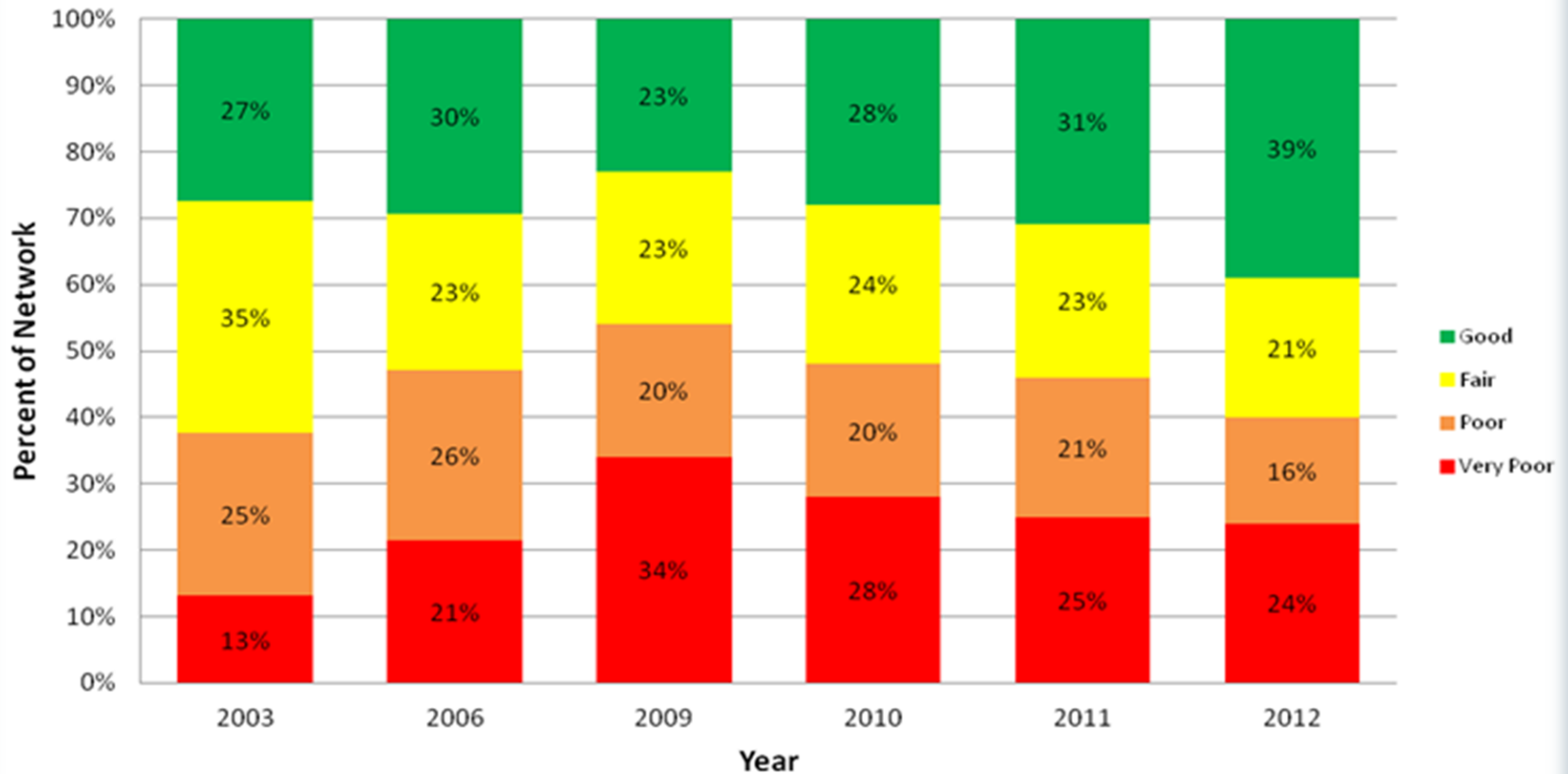
Data Source: FARS and VTTrans database.  
2011\* note for triple fatalities in one crash on I-89 in May.  
VTTrans, MW



# PERFORMANCE MEASURE: ROADWAY CONDITIONS

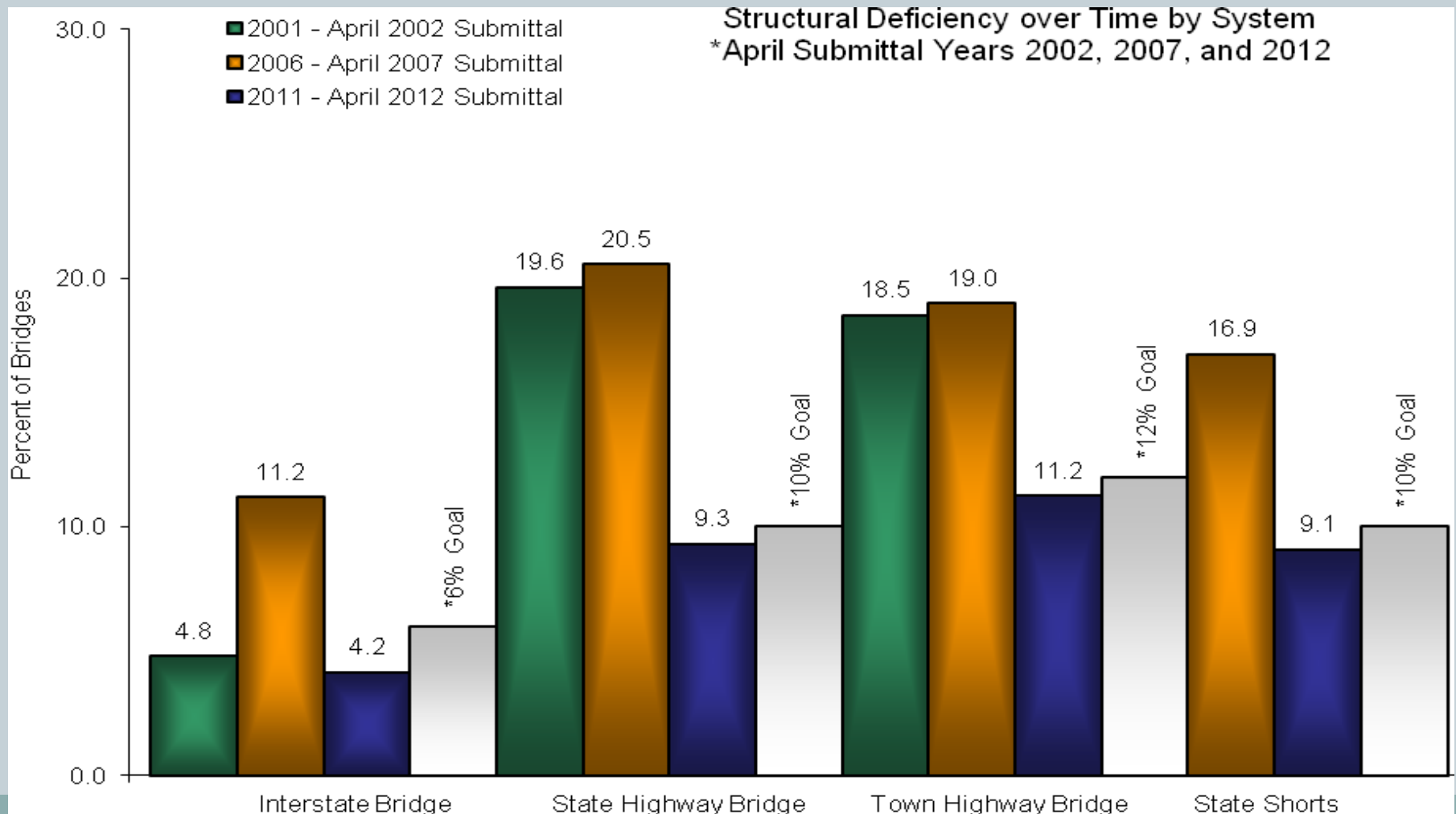
44

## % Conditions Over Time - Unweighted



# PERFORMANCE MEASURE: BRIDGE CONDITIONS

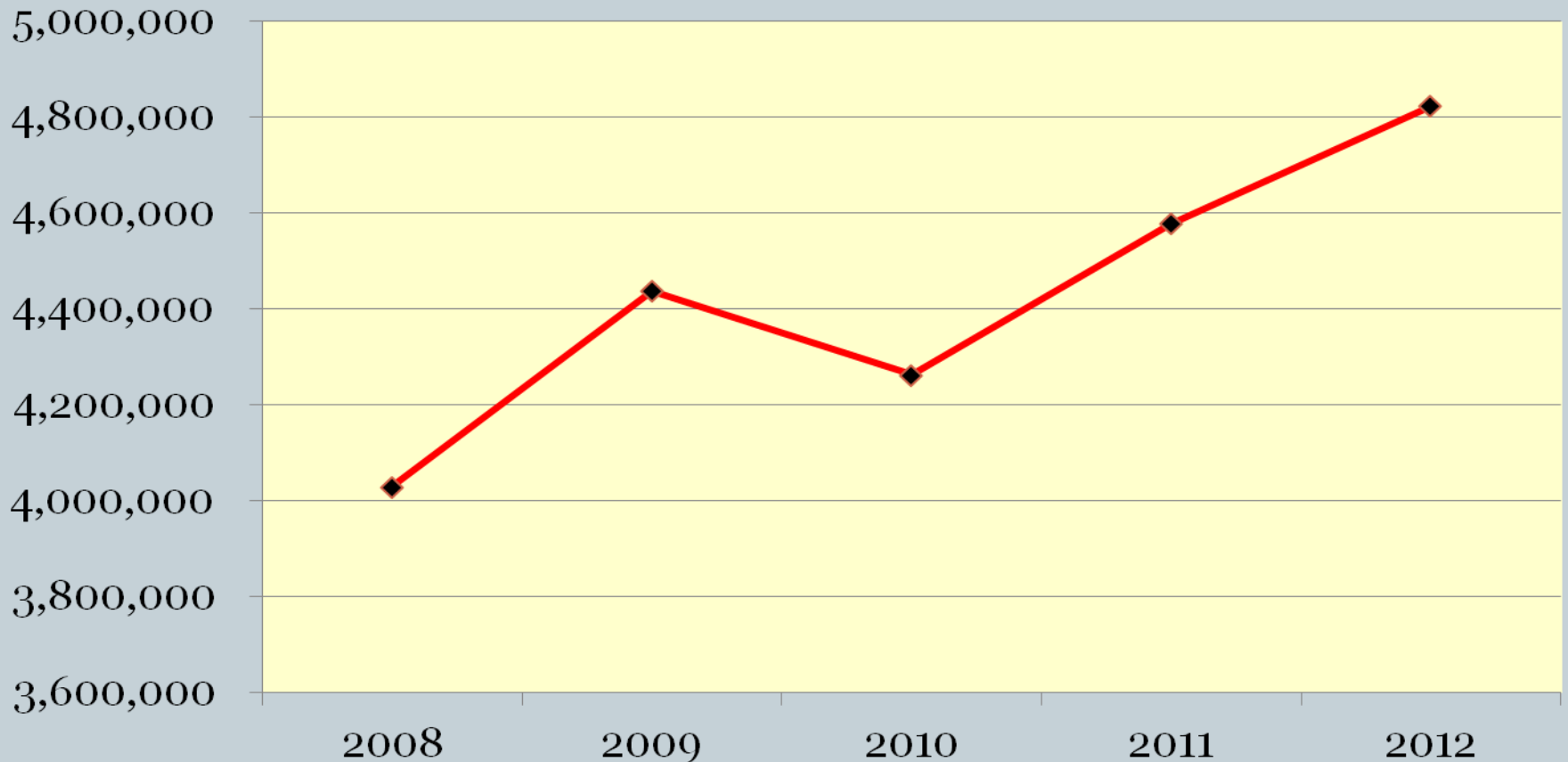
45



# PERFORMANCE MEASURE: PUBLIC TRANSIT RIDERSHIP

46

## Public Transit Ridership by State Fiscal Year

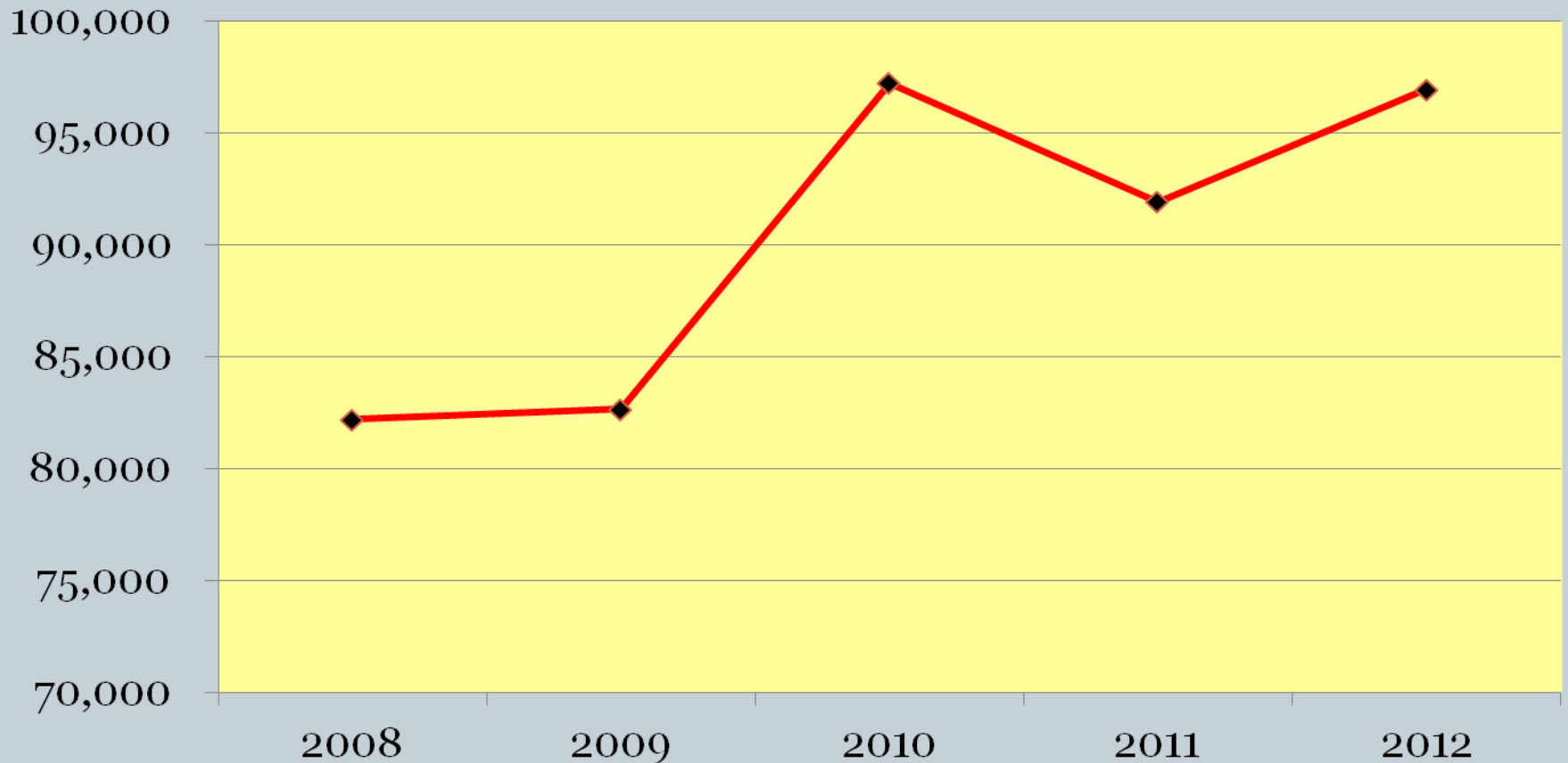


20% increase in public transportation ridership between 2008 and 2012.

# PERFORMANCE MEASURE: RAIL RIDERSHIP

47

## Rail Ridership for Vermont Stations



18% increase in rail ridership between 2008 and 2012.

# DMV CUSTOMER SERVICE

48

## Branches                      Wait time                      Transactions

• Bennington	5	414
• Burlington	16	1644
• Montpelier	3	1830
• Newport	3	435
• Rutland	6	712
• Springfield	3	522
• Northern Van	5	476
• S Van	2	311
• EDL office	4	53
• Rutland EDL	6	28
• Burlington EDL	12	133
• Newport EDL	2	33
	<b>67</b>	<b>6591</b>

**Average around the state 5.5-min. Acceptable is 30 min.**

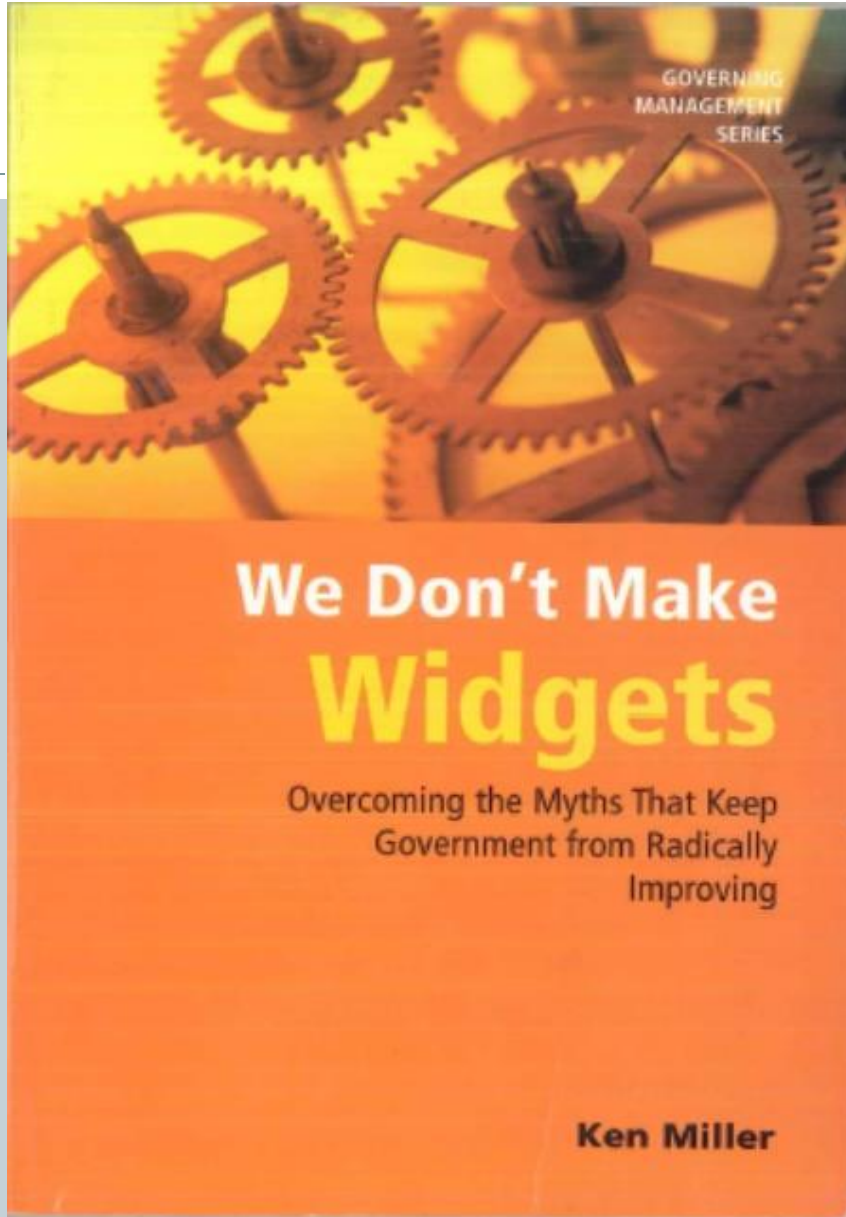
**Driver Improvement 5-week average: issued 969 suspensions and 1470 reinstatements**



# NATIONAL AND GLOBAL PERSPECTIVE

49

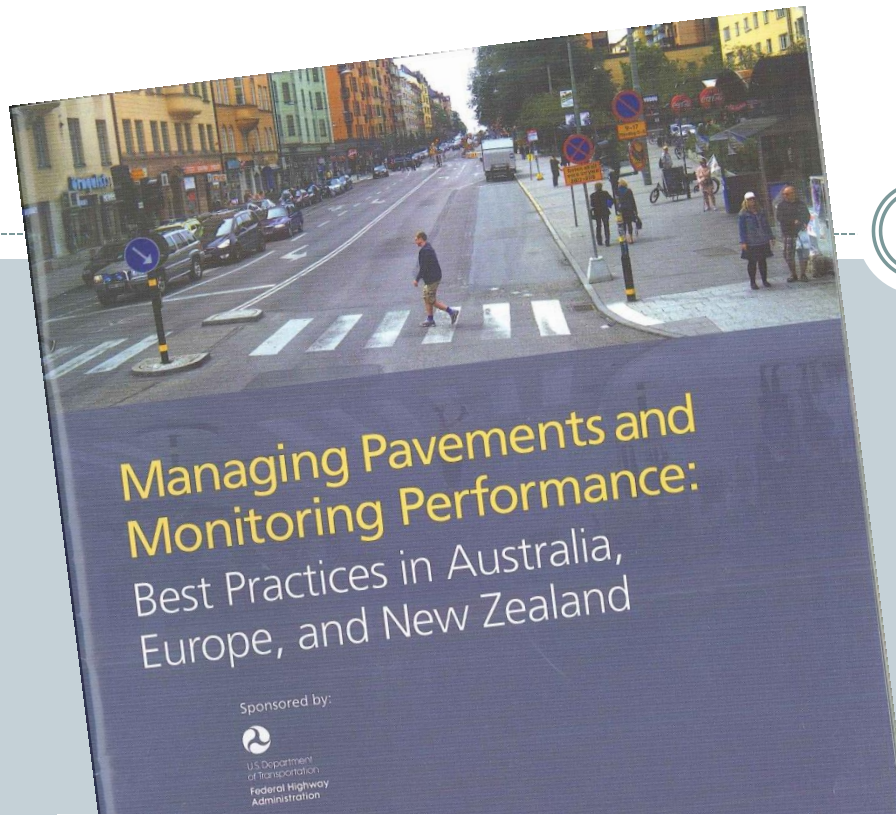
- **Literature**
  - *We Don't Make Widgets*
  - *International Scan Report*
- **Federal Law & Federal Highway Administration**
  - *Asset Management Plans*
  - *Every Day Counts*
- **Regional Momentum/Leadership**
  - *Tri State Performance Measures*



*...Ken Miller's "law of budgeting": The less our value is understood, the more our funding is scrutinized"*

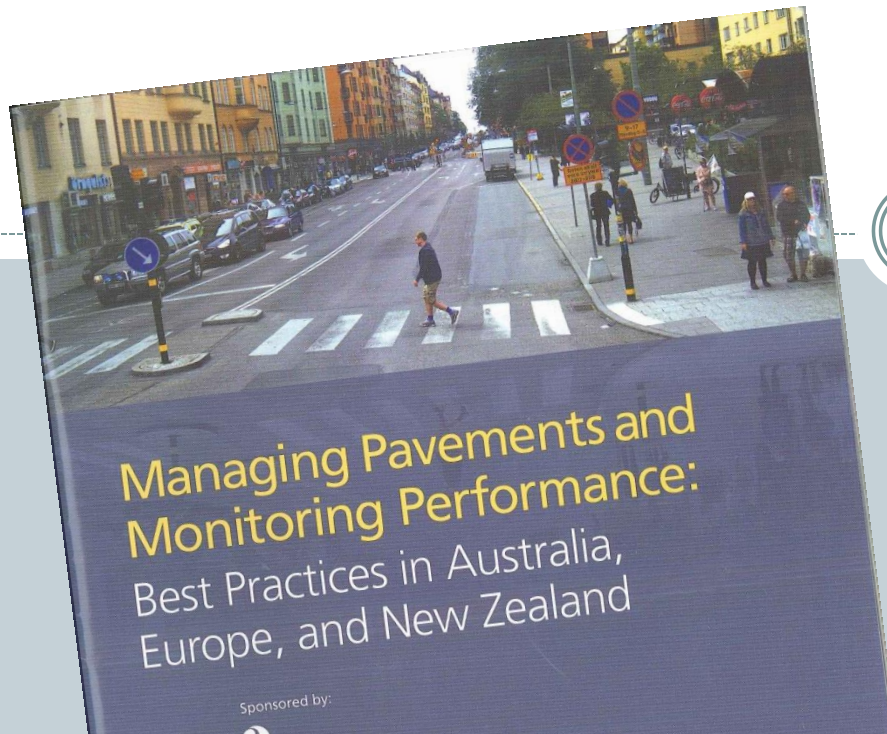
page 87

Copyright © 2006 by Governing Books, a division of Governing Magazine



## CHAPTER 9. APPLICATION OF KEY FINDINGS IN THE UNITED STATES

1. Performance data and systematic processes are used to evaluate investment strategies. As a result, agencies can respond effectively to pressures caused by decreasing budgets, government efforts to improve efficiency, and increasing customer expectations.



## CHAPTER 9. APPLICATION OF KEY FINDINGS IN THE UNITED STATES

7. Strong investment in asset management capabilities results in well-established, trained, and assimilated units in the organizations that stakeholders, including executives and legislators, look to for information. Building and maintaining agency capacity requires skills outside of a traditional civil engineering program. It requires a better understanding of finance, accounting, risk, and communication, among other skills.

# 2001-2002 VERMONT LEGISLATURE

53

## NO. 64. AN ACT RELATING TO THE STATE'S TRANSPORTATION CAPITAL PROGRAM AND PROJECT DEVELOPMENT PLAN

### **Sec. 24. 19 V.S.A. § 10k is added to read:**

#### § 10k. STATEMENT OF POLICY; ASSET MANAGEMENT

**The agency shall develop an asset management plan** which is a systematic goal and performance-driven management and decision-making process of operating, maintaining and upgrading transportation assets cost-effectively. At a minimum, the asset management system shall:

- (1) list all of the infrastructure assets and their condition, including, but not limited to, pavements, structures, and facilities;
- (2) list other assets and their condition, including, but not limited to, construction and maintenance equipment, vehicles, real estate, materials, corporate data and information, and ground and water transportation facilities and equipment;
- (3) include deterioration rates for infrastructure assets; and
- (4) determine, long-term, the annual funds necessary to fund infrastructure maintenance at the recommended performance level.

# FEDERAL MAP-21 ASSET MANAGEMENT REQUIREMENT

54

- **Each State is required to develop a risk-based asset management plan** for the National Highway System (NHS) to improve or preserve the condition of the assets and the performance of the system. (23 U.S.C. 119(e)(1), MAP-21 § 1106)
- **USDOT is required to issue a regulation not later than 18 months after date of enactment, after consultation with the States and other stakeholders, which will establish the process to develop the State asset management plan for the NHS.** ( 23 U.S.C. § 119(e)(8), MAP-21 § 1106)

# FEDERAL HIGHWAY ADMINISTRATION

55



## VT STATE TRANSPORTATION INNOVATION COUNCIL (STIC)

*Mission:* The EDC initiative is designed to identify and deploy innovation aimed at reducing the time it takes to deliver highway projects, enhance safety, and protect the environment

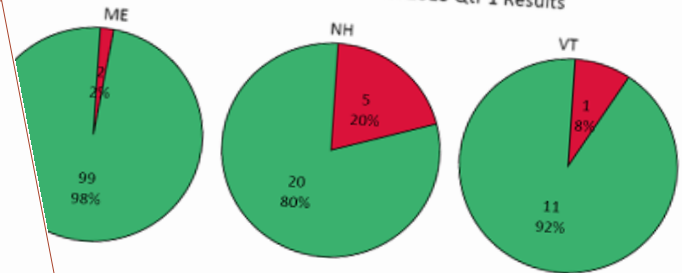
# TRI-STATE MEASURES

56



## Tri-State Performance Measures

### Percentage Advertised On Time: 2013 Qtr 1 Results

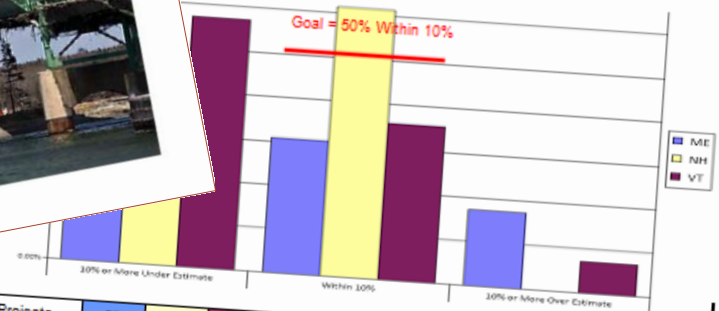


Year-to-Date	Rest Of Year				Projected Year End			
	Delayed or Removed	% On Time	On Time	Delayed or Removed	% On Time	On Time	Delayed or Removed	% On Time
2	2	98%	101	0	100%	200	2	99%
5	5	80%	21	4	84%	41	9	82%
1	1	92%	50	27	65%	61	28	69%

### Total Construction Value Delivered: 2013 Qtr 1 Results (All Dollars in Millions)

Period	Remainder of Calendar Year	Projected for Year	Construction Value of CAP	Percent of CAP
Q1	\$149.09	\$241.97	\$226.63	107%
Q2	\$136.57	\$186.65	\$175.60	106%
Q3	\$149.20	\$255.80	\$203.30	126%

### Award Amount vs. Cost Estimate: 2013 Qtr 1 Results



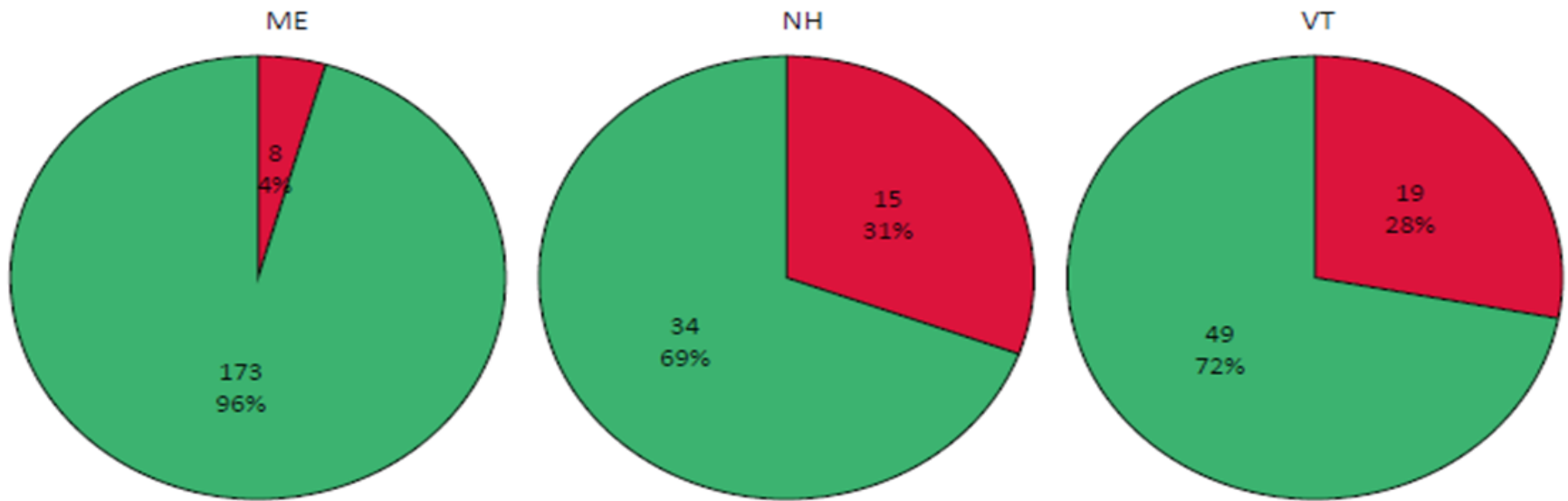
Projects	27	5	8	16	8	5	9	0	1
%	52	38	57	31	62	36	17	0	7



# PROJECTS ADVERTISED

57

Percentage Advertised On Time: 2013 Qtr 3 Results



State	Year-to-Date			Rest Of Year			Projected Year End		
	On Time	Delayed or Removed	% On Time	On Time	Delayed or Removed	% On Time	On Time	Delayed or Removed	% On Time
ME	173	8	96%	17	3	85%	190	11	95%
NH	34	15	69%	1	0	100%	35	15	70%
VT	49	19	72%	13	8	62%	62	27	70%

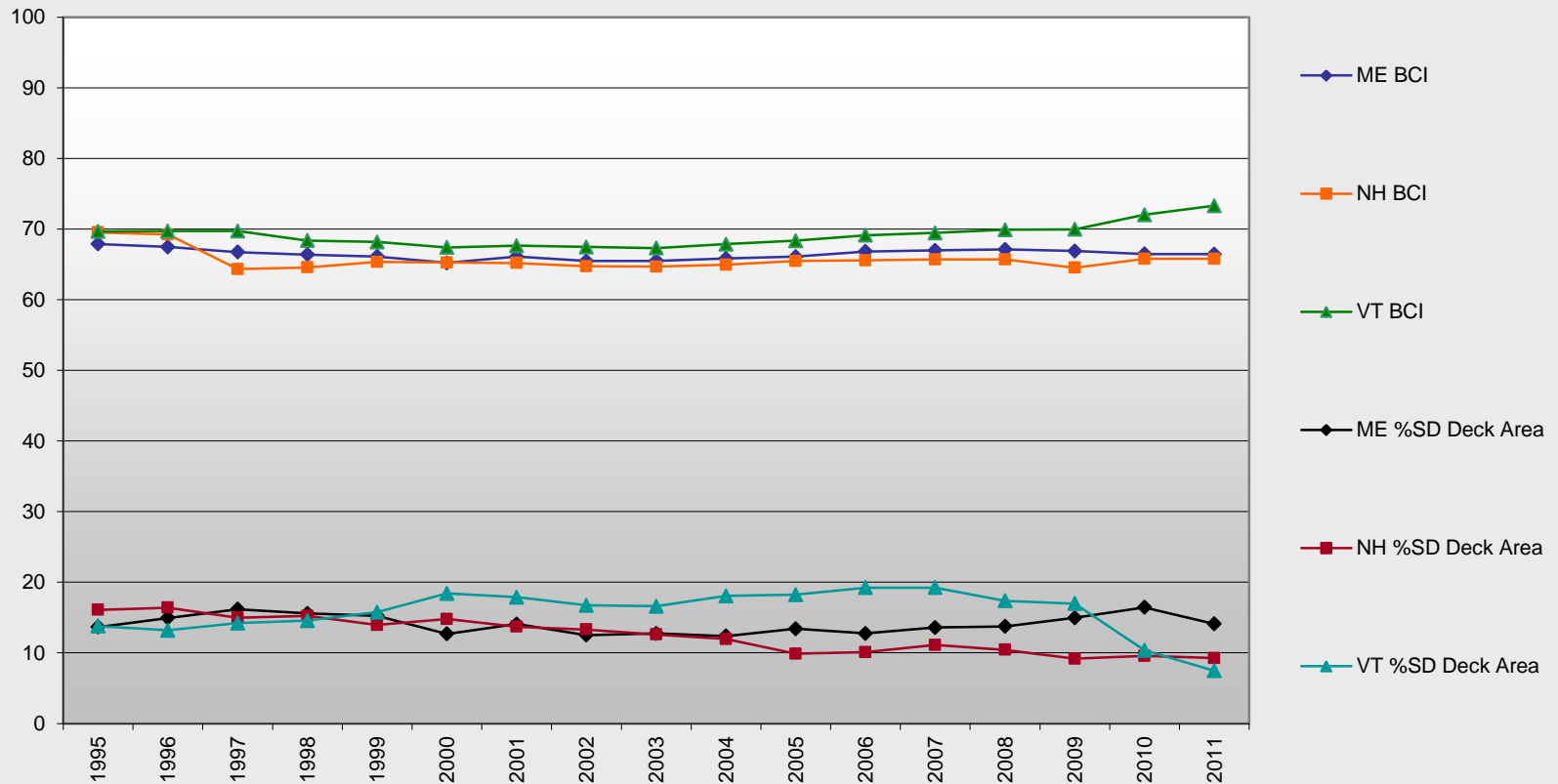


MaineDOT



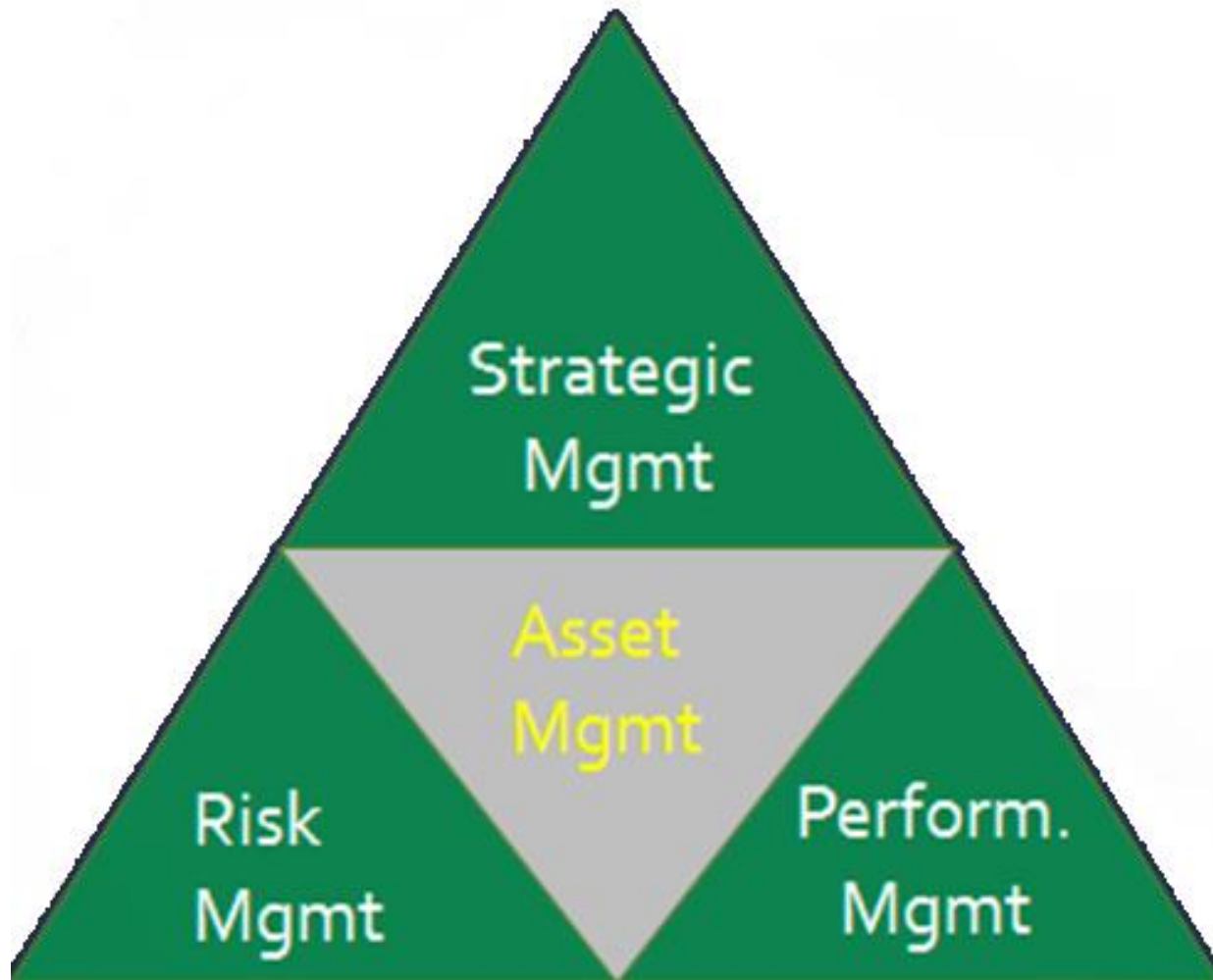
VERMONT

# Bridge Condition Index (BCI) and %SD Deck Area \*State Highway System over Time



# SUMMARY

59



# A CULTURE OF INNOVATION & COLLABORATION

60

## CROSS AGENCY PROGRAMS

- SHSP & Safety Alliance
- ANR Partnership
  - Rivers & Roads Training
  - Stormwater Management

## EFFICIENCIES

- Accelerated Bridge Construction (ABC)
- Business Process Management (BPM)

# ENHANCING CUSTOMER SERVICE THROUGH COMMUNICATIONS

61

VTrans

Admin Panel

Post	Total Reach?	Paid Reach?	Promotion
Route 5 is now closed at the Norw...	150	--	Boost Post
Tractor-Trailer accident on Route 5...	1,452	--	Boost Post
Weathersfield VT: Route 131 - I-93...	1,315	--	Boost Post
Winoski: Reconstruction of Mallet...	1,266	--	Boost Post
Colchester/South Hero: There will ...	1,226	--	Boost Post

Get More Likes

Reach: People Who Saw Your Posts

12,115

▲ 240.6% from previous week

Check out the new Page Insights

VERMONT Vermont Agency of Transportation  
State of Vermont

Vermont.gov | Home | Contact | Site Map

Citizen Info Travel Doing Business Infrastructure Projects Government Resources Publications & Maps About Us

Spotlight

Ready for Winter? PDF

I-91 Traffic Cams

Exit & Project Information

Find A Project

2013 VTrans Fact Book PDF

FY2014 Transportation Program

State Transportation Improvement Program

Draft Freight Plan PDF

DMV Online Services

Change Your Address

Renew Your Vehicle Registration

Request a Duplicate Registration

Pay Your Reinstatement Fee

Visit the DMV website

Quick Links

For Travel

Road Reports

Traffic & Weather Cams

Scenic Byways

Park & Rides

Rest Areas

For Business

Advised Projects

Permits

RFP Status

Geodetic Information

CADD Standards

Grant Information

Divisions

DMV

Finance & Administration

Operations

Policy, Planning & Intermodal Development

Program Development

Social Media

YouTube

Facebook

Twitter

Full Site 511VT Mobile Legend

Map List Help About

511 Road Reports

Check Current Road and Driving Conditions

Tweets

511VT @511VT

Route 5 is now closed at the Norwich/Thetford Town Line due to the TT accident. Vehicle recovery in progress.

511VT

VERMONT CONNECTING COMMUNITIES

Tweets

Following

Followers

Favorites

Lists

Tweet to 511VT

@511VT

Photos and videos

511VT

@511VT

Based primarily on reports from the VTrans Transportation Operations Center - open during business hours and storm events.

Montpelier, Vermont · 511.vermont.gov/main.jsf

1,285 TWEETS

239 FOLLOWING

2,219 FOLLOWERS

Followed by Kristin Carlson, John Van Hoesen, FOX44 Local News and 37 others.

Tweets

511VT @511VT

Route 5 is now closed at the Norwich/Thetford Town Line due to the TT accident. Vehicle recovery in progress.

YouTube

VTransVT

Popular on YouTube

Music

Sports

Gaming

Education

Movies

TV Shows

News

Live

Spotlight

CHANNELS FOR YOU

FreddyW (RockeJump)

Geek & Sundry

Tomorrowland Channel

Alex Day

YouTube Spotlight

Winter Driving Safety

1,350 views 1 year ago

Tips from VTrans snow plow drivers for safe winter driving.

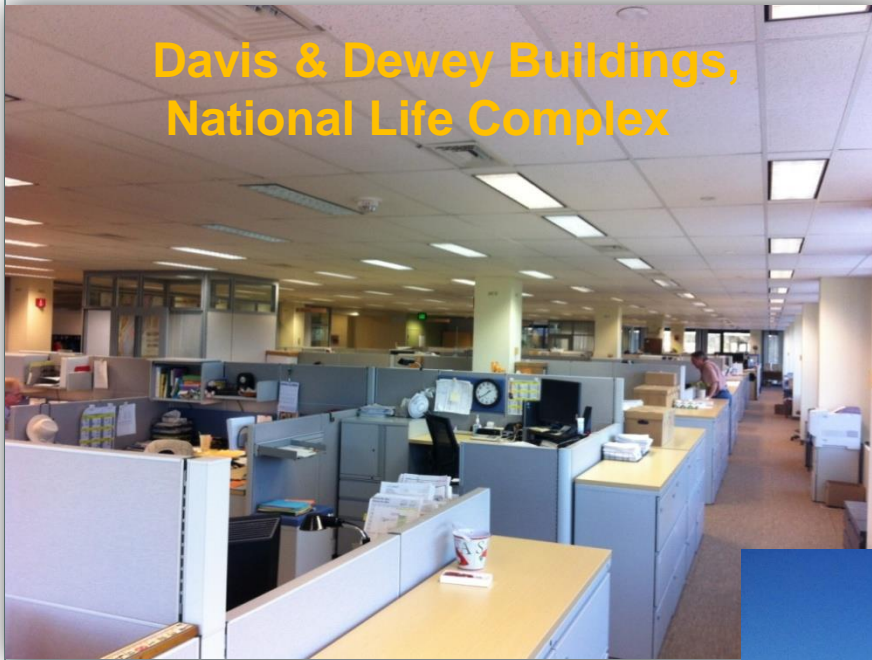
BOLTON

These images may not be current. Please check the RWIS site for more information.

# Post Irene Office Rearrangements

62

Davis & Dewey Buildings,  
National Life Complex



Materials & Research  
Lab, Berlin, VT



# QUESTIONS ??

63



*Agency of  
Transportation*

**Richard Tetreault, P.E., Director/Chief Engineer**

[phone] 802-828-2663 (fax) 802-828-5172

[ttd] 800-253-0191

[email] [Richard.tetreault@state.vt.us](mailto:Richard.tetreault@state.vt.us)

**State of Vermont**

**Program Development Division**

One National Life Drive, 3<sup>rd</sup> Floor

Montpelier, VT 05633-5001

**[vtrans.vermont.gov](http://vtrans.vermont.gov)**

