

BRIDGES

Provided by VTrans January 2014

Vermont's "Highway" Structure Population

(as submitted to FHWA in April 2013)

Structure Type	Interstate	State Highway	Town Highway	Other	Total
Long Structures (span length > 20 feet)	313 (48 buried structures)**	776 (62 buried structures)	1,622 (92 buried structures)	5 (1 buried structures)	2,716 (203 buried structures)
Short Structures (span > 6 ft & ≤ 20 ft)	211 (211 buried structures)	1,050 (887 buried structures)	*** (see note)	*** (see note)	1,261 (1,088 buried structures)
Totals	524	1,826	1,622	5	3,977
Structurally Deficient "Longs"	8 (2.56%)	64 (8.25%)	154 (9.49%)	0 (0.00%)	226 (8.32%)
Functionally Obsolete "Longs"	96 (30.67%)	100 (12.89%)	357 (22.01%)	3 (60.00%)	556 (20.47%)

**Buried structures include metal culverts, concrete box culverts, frames, masonry arches, and concrete arches.

***Note: VTrans does not maintain an inventory of town highway or other short structures

Restricted, Posted, Closed, or Temporary Bridge

In April 2003, Vermont had 143 restricted, closed, posted, or temporary bridges. In April 2013, the number was 216. The breakdown is as follows:

Restricted Bridges:

2003: 35

2013: 17

Net decrease of 18

Posted Bridges:

2003: 79

2013: 144

Net increase of 65

Closed Bridges:

2003: 13

2013: 24

Net increase of 11

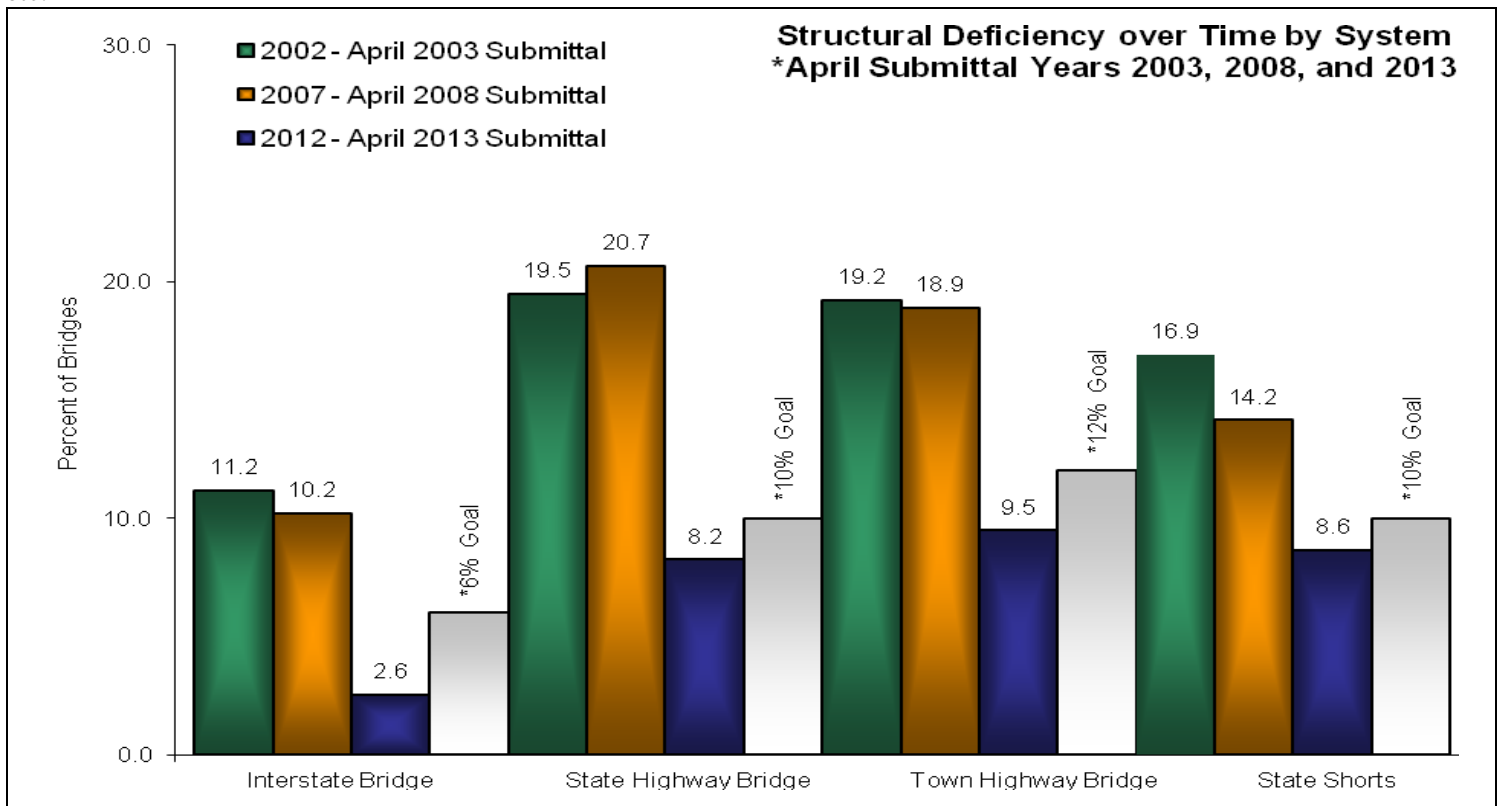
Temp Bridges:

2003: 16

2013: 31

Net increase of 15

Posted means weight limits. Restricted relates to everything else but weight, like speed, number of vehicles, vertical clearance, etc.



PAVEMENT

Provided by VTrans January 2014

Vermont's Public Highway Network Inventory and Statistics

(based on 2013 data)

Surface Type	Interstate	State Highway	Class 1	Class 2	Class 3	Class 4	Total
Paved	378	2321	139	2153	2085	7	
"Dirt"	0	4	0	622	6452	1628	8706
Totals	378	2325	139	2775	8537	1635	15789

Note 1: Mileages include divided highways and ramps as one mile per mile of roadway.

Note 2: Shaded area represents that portion of the Public Highway Network which VTrans is responsible for maintaining.

This portion of the network receives automated condition surveys. (beginning 2009 interstate and NHS state routes to be surveyed annually; remainder of the state and Class 1 systems on even years)

PAVEMENT CONDITION DESCRIPTIONS

Like new pavement with few defects perceived by drivers.	Slight rutting and/or cracking and/or roughness become noticeable to drivers.	Multiple cracks are apparent and/or rutting may pull at the wheel and/or roughness causes drivers to make minor corrections.	Significant cracks may cause potholes and/or rutting pulls at the vehicle and/or roughness is uncomfortable to occupants. Drivers may need to correct to avoid road defects.
Composite Pavement Condition Index 80-100	Composite Pavement Condition Index 65-79	Composite Pavement Condition Index 40-64	Composite Pavement Condition Index 0-39



GOOD



FAIR

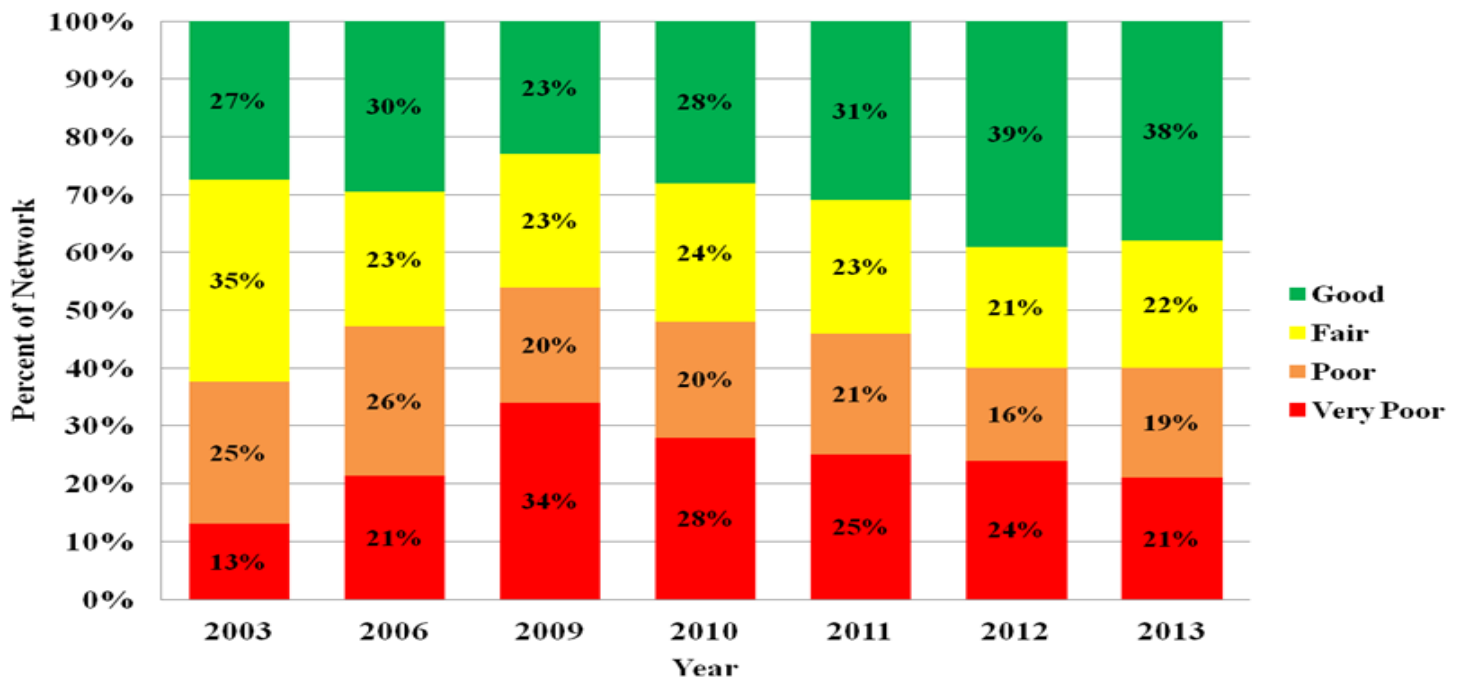


POOR



VERY POOR

% Conditions Over Time - Unweighted



The Agency's goal is to maintain the portion of the network it is responsible for at less than 25% Very Poor.