

## **Vermont Housing & Conservation Board: 25 Years of Partnership Investing in Vermont**

**\$274 million in state funds invested by VHCB have allowed project sponsors (non-profit organizations, towns, municipalities and state agencies) to leverage an additional \$1 billion from federal programs, foundations, private capital and other charitable donations.**

### **Invested in:**

- 11,300 homes & apartments
- 620 farms; more than 146,000 acres of agricultural land conserved
- 255,000 acres conserved for public recreation and natural areas
- 59 historic buildings restored for community use

### **Housing Investment includes:**

- 1,000 homes for homeowners
- 46 mobile home parks for over 1,900 families
- 1,758 homes for individuals with special needs, including frail elders, domestic violence survivors, youth-at-risk, ex-offenders, people with psychiatric and physical disabilities, and people who are homeless or at-risk
- 1,605 homes made accessible in partnership with the Vermont Center for Independent Living
- 1,166 homes for elders and people with disabilities supported through the SASH Program (Support and Services at Home), helping to avoid the higher cost of institutional care

### **Land for Public Recreation includes:**

- Support for Green Mountain Club's protection of the Long Trail, now 95% complete
- Investment in various trail systems: the Catamount Trail (north-south 300 mile cross country ski trail); Cross Vermont Trail (east-west trail through 17 towns)
- East Montpelier Trail system; Windmill Hill Pinnacle Association conservation of more than 1820 acres to create a 14-mile ridgeline trail and wildlife reserve between Rockingham and Putney
- Creation and expansion of 11 state parks: Green River Reservoir, Knight Island, Alburgh Dunes, Lowell Lake, Kingsland Bay, Bomoseen, Brighton, Clarendon Gorge, Lyman Falls, Niquette Bay and Round Pond.
- Protection of Champion Lands – 133,000 acres for public recreation and wildlife
- Significant nature preserves with The Nature Conservancy: High Pond Preserve, Hubbardton; Bald Mountain, West Haven; Black Mountain, Dummerston; Wilmarth Woods, Addison; Shelburne Pond; North Pawlet Hills; White River Ledges

### **Historic Buildings for Public Use include:**

- Farm Barn and Breeding barn at Shelburne Farms
- Monitor Barn – Vermont Youth Conservation Corps headquarters
- Brookfield, Jamaica, Ira, Pawlet, Brighton and West Rutland Town Halls
- Latchis Theater, Brattleboro; Paramount Theater, Rutland; Flynn Theater, Burlington
- Firehouse Arts Gallery, Burlington
- Morrisville River Arts and Lamoille Grange Hall
- Old Labor Hall, Barre
- G.R.A.C.E. Old Firehouse, Hardwick

## **OTHER PROGRAMS**

In addition to VHCB funding programs for housing development and land conservation, a number of supplemental programs supported with state and federal funds provide services and capacity to improve housing and conservation opportunities for Vermonters and to assist farmers with economic development.

**Farm Viability Program:** More than 400 farmers have participated in the Farm Viability Program, developed in collaboration with the Vermont Agency of Agriculture, Food and Markets in 2003 to provide farmers with business planning and technical assistance.

## **FEDERALLY FUNDED PROGRAMS:**

**Healthy Homes and Lead Paint Hazard Abatement Program:** More than 2,000 homes made lead-safe. The program provides financial and technical assistance to income-eligible landlords and home owners to reduce the risk of lead poisoning caused by lead-based paint hazards. Free trainings are provided in essential maintenance practices required by Vermont's Lead Paint law. \$19.6 million administered since 1994.

A 2013 HUD grant has allowed for development of the Healthy Homes Program to address additional health and safety issues beyond lead paint. Healthy Homes will add to existing rehabilitation programs, providing assistance to correct building issues that contribute to unhealthy living conditions like mold, moisture and pest infestation, and particularly affect vulnerable groups, such as children with asthma and the elderly.

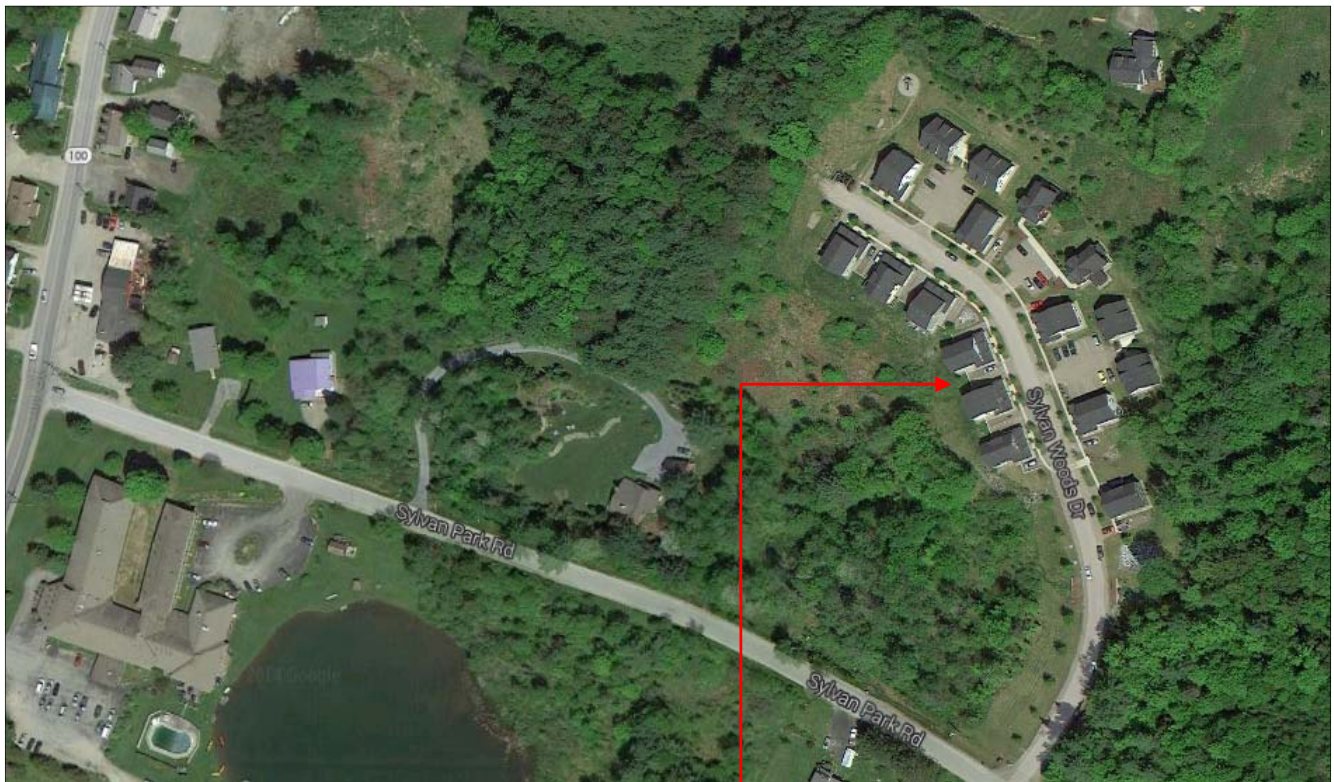
**AmeriCorps Program:** VHCB has administered \$4.7 million in federal funds to place more than 400 AmeriCorps members with housing and nonprofit organizations statewide, providing community service, developing leadership skills and civic engagement.

**HOME Program:** Increases the affordability of rental housing with federal funds; \$67 million administered since 1992.

# Sylvan Woods

Stowe

The 10-acre Sylvan Woods development, located off Sylvan Park Road in Stowe's Lower Village, consists of eight for-sale condominiums and 28 affordable one-, two- and three-bedroom apartments. The for-sale townhomes feature large front porches and full basements. The 28 apartments are located in 11 duplex buildings and two triplexes. The duplex buildings have porches and full, unfurnished basements. The two triplex structures were constructed on slab and feature utility rooms. Rents are structured to be affordable to a range of income levels. The development was completed in 2007.



Sylvan Woods Neighborhood



The Vermont Housing and Conservation Board invested \$750,000 in state funds and \$588,800 in federal funds to help create this attractive, affordable neighborhood. Housing Vermont and the Lamoille Housing Partnership were the developers.