



State of Vermont
Department of Mental Health
Commissioner's Office
Redstone Office Building
26 Terrace Street
Montpelier VT 05609-1101
<http://mentalhealth.vermont.gov/>


Agency of Human Services

[phone] 802-828-3824
[fax] 802-828-1717
[tty] 800-253-0191

MEMORANDUM

TO: Joint Legislative Mental Health Oversight Committee

FROM: Paul Dupre, Commissioner of the Department of Mental Health

DATE: August 1, 2013 

RE: July, 2013 DMH Report to the Mental Health Oversight Committee

The Department of Mental Health respectfully submits the July, 2013 report to the Mental Health Oversight Committee (MHOC) as outlined in 2013 Acts and Resolves No. 79. Additionally, information that the Department believes will be responsive to MHOC meeting data collection requests is incorporated.

1. Number of individuals receiving acute inpatient psychiatric care (Level 1, general involuntary, and voluntary) in all hospitals; and single combined one-day highest number (Level 1).
2. The number of individuals waiting for admission, including number of individuals treated in each setting and the single combined one-day highest number each month.
3. The total census capacity and average daily census of new intensive recovery residence beds, secure residential daily census
4. Department of Mental Health Monthly Snapshot which includes Court Ordered Involuntary Medication numbers including duration from application to orders.
5. Overall Projection for replacement/development of system bed capacity

Please direct any inquiries for additional data collection or report content development to Susan Onderwyzer at susan.underwyzer@state.vt.us

July, 2013
Department of Mental Health Report to the Legislative
Mental Health Oversight Committee

This monthly report focuses on providing updates to the Mental Health Oversight Committee on a number of identified performance indicators for the Department of Mental Health. The format of this report provides both per month, and year – to – date data, as available, as well as a narrative explanation of how the data is captured and some interpretation of its meaning in the context of our system of care.

1. **Acute Inpatient Psychiatric Care:** The data in this section outlines the number of individuals receiving acute inpatient psychiatric care (Level 1, general involuntary, and voluntary) in designated hospitals; and single combined one-day highest number for patients identified as Level 1.

This data is captured through a daily DMH Utilization Review document that lists all Level 1 patients, providing for a single combined one-day highest number, and the hospital daily inpatient bed census graph, which depicts the number of individuals served in inpatient units in all hospitals. The Charts below detail utilization of inpatient beds for the time period.

- *Level I Admission by Inpatient Hospital report- June 2013*
- *Level I Admissions by Psychiatric Inpatient Unit – June 2013*
- *Designated Hospital Inpatient Capacity report- June 2013*
- *Level 1 inpatient care length of stay for current patients report-As of July 8, 2013*

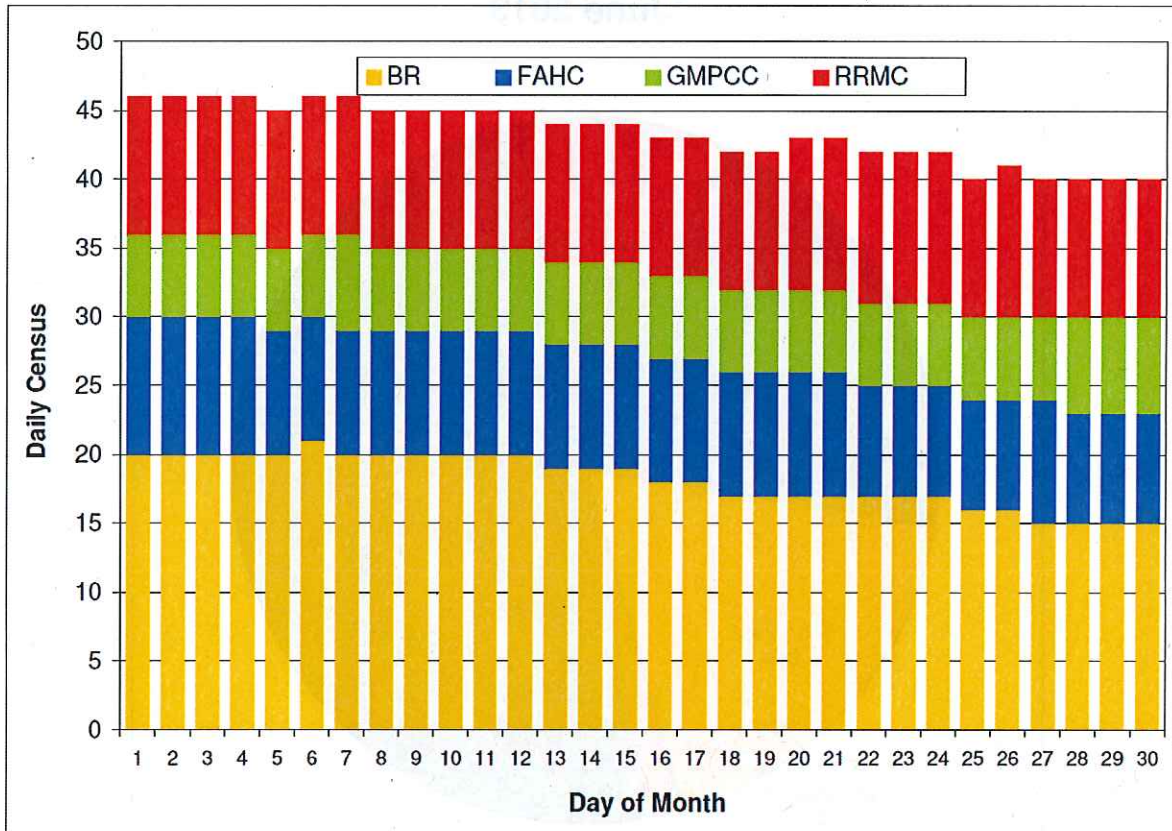
There are 157 psychiatric beds in our statewide system of care for adults; Brattleboro Retreat – 75, Fletcher Allen – 27, Green Mountain Psychiatric Care Center – 8, Rutland Regional – 23, Windham Center – 10, and Central Vermont Medical Center – 14. The highest daily census in the beds designated as Level I, was 46 in the month of June. This represents approximately 29% of the statewide system of adult beds. There were no level 1 clients served at Windham Center or at Central Vermont Medical Center during the month of June.

The Level I admissions were dispersed across the system, with approximately 50% of the admissions being in level I beds. The Level I inpatient units were largely at their capacity for the month of June with no beds closed, as can be seen in the *Designated Hospital Inpatient Capacity Report for June, 2013*. Tyler 4 at Brattleboro Retreat was at occupancy for the entire month, while South Wing at Rutland Regional was at capacity for 27 days and Green Mountain Psychiatric care Center was at capacity for 21 days in June. It is interesting to note that the overall census of Level I patients decreased slightly over the month at all designated hospitals. This is seen as an expected fluctuation.

MHOC JULY 2013 REPORT
SAO/ 73113

Length of stay data for 36 Level I patients still in inpatient care as of July 8, 2013 varies widely, which makes identification of an average stay difficult and potentially inaccurate as a measure. The median length of stay for this cohort is 67 days and represents the mid range for the group. The range is between 10 and 271, with a resulting average of 80 days. Length of stay for discharged Level 1 patients averages 42 days with a median length of stay of 27 days. Length of stay is affected by variables including: responsiveness to and compliance with recommended treatment; status of forensic factors, appropriate discharge plans and their availability, to name a few.

Level 1 Admissions by Inpatient Hospital June 2013



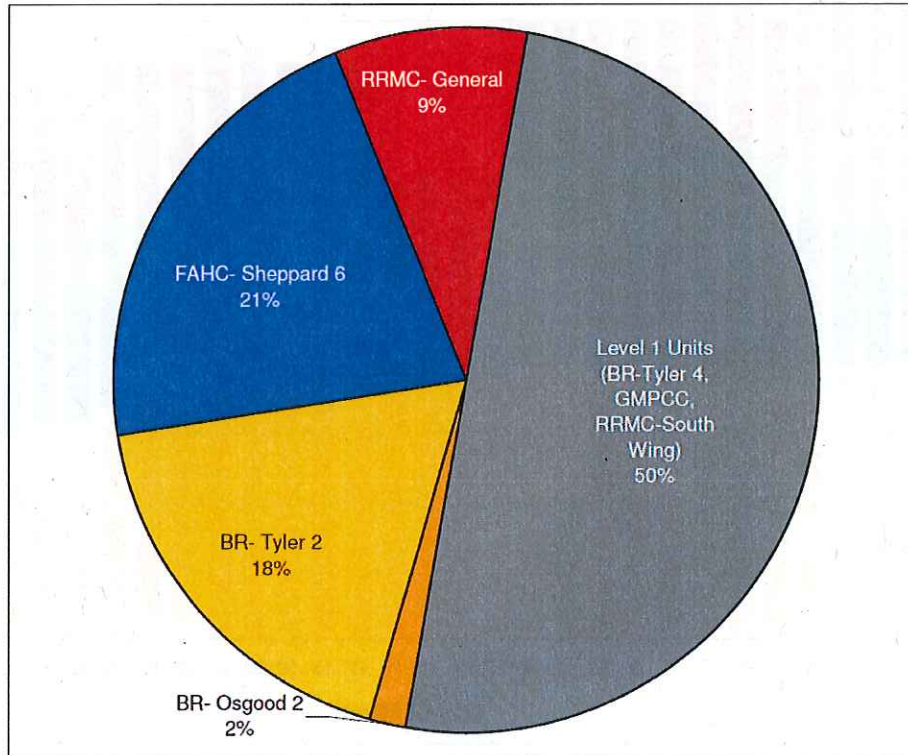
Level 1 Episodes during June 2013

Hospital	Total Adult Beds	Total Episodes	Highest Daily Census	Average Daily Census
Brattleboro Retreat	75	23	21	18
Fletcher Allen	27	12	10	9
Green Mountain	8	9	7	6
Rutland Regional	23	12	11	10
Statewide		56	46	43

Date of Report: July 8, 2013.

Analysis is based on the Inpatient Tracking Spreadsheet maintained by the Department of Vermont Health Access (DVHA). Includes psychiatric hospitalizations with Level 1 designations for hospitalizations occurring at the Brattleboro Retreat (BR), Fletcher Allen Medical Center (FAHC), Rutland Regional Medical Center (RRMC), and Green Mountain Psychiatric Care Center (GMPCC). Level 1 designation is reserved for patients with risk of imminent harm to self or others and requiring significant resources. Total episodes reflects admissions and existing designated level 1 hospitalizations on unit during a specified month.

Level 1 Admissions by Psychiatric Inpatient Unit June 2013



Psychiatric Inpatient Unit	Total Episodes
* BR- Osgood 2	1
* BR- Tyler 2	10
* FAHC- Sheppard 6	12
* RRMCC- General	5
BR- Tyler 4	12
RRMCC- South Wing	7
GMPCC	9
Total	56

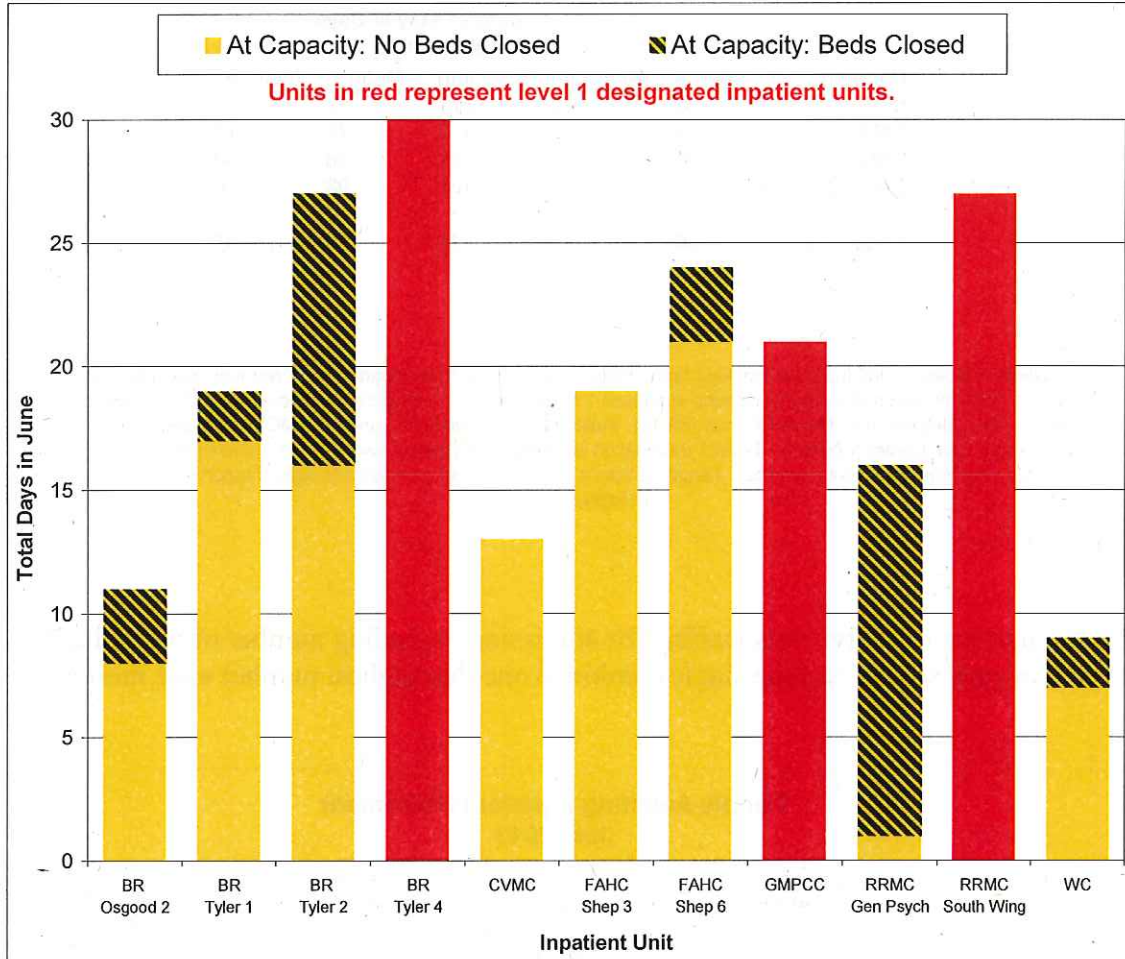
* Units specifically requested by MHOC.

**Episodes based upon the unit at admission to inpatient care.
Patients can be transferred to other units within the hospital.**

Date of Report: July 8, 2013.

Analysis is based on the Inpatient Tracking Spreadsheet maintained by the Department of Vermont Health Access (DVHA). Includes psychiatric hospitalizations with Level 1 designations for hospitalizations occurring at the Brattleboro Retreat (BR), Fletcher Allen Medical Center (FAHC), Rutland Regional Medical Center (RRMC), and Green Mountain Psychiatric Care Center (GMPCC). Level 1 designation is reserved for patients with risk of imminent harm to self or others and requiring significant resources. Total episodes reflects admissions and existing designated level 1 hospitalizations on unit during a specified month.

Designated Hospital Inpatient Capacity June 2013



Designated Hospital	Not At Capacity	Total Days in June		No Census Reported
		No Beds Closed	Beds Closed	
Brattleboro Retreat - Osgood 2	19	8	3	0
Brattleboro Retreat - Tyler 1	11	17	2	0
Brattleboro Retreat - Tyler 2	3	16	11	0
Brattleboro Retreat - Tyler 4	0	30	0	0
Center Vermont Medical Center	16	13	0	1
Fletcher Allen - Shepardson 3	11	19	0	0
Fletcher Allen - Shepardson 6	6	21	3	0
Green Mtn. Psychiatric Care Center	9	21	0	0
Rutland Regional - General Psych	14	1	15	0
Rutland Regional - South Wing*	3	27	0	0
Windham Center	20	7	2	1

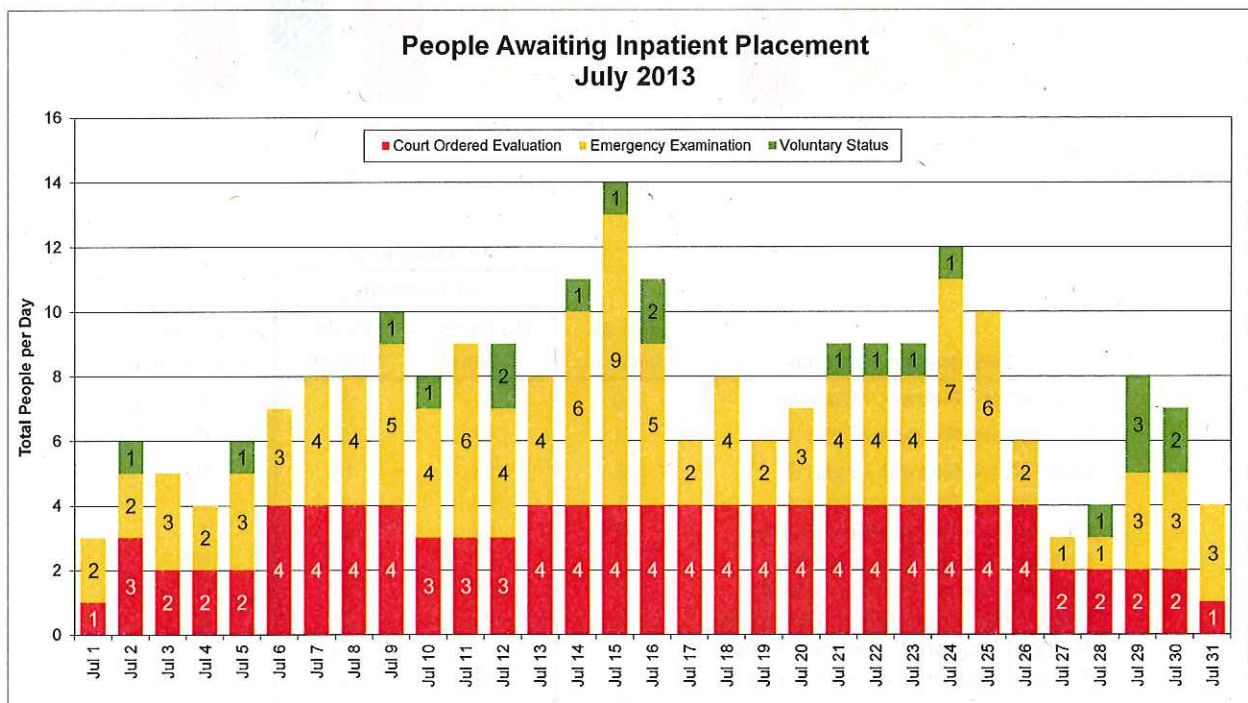
Based on data reported to the Vermont Department of Mental Health (DMH) by designated hospitals (DH) for adult inpatient care using the electronic bed boards system. Beds at inpatient settings can be closed based on the clinical decision of the director of each inpatient unit.

Level 1 Inpatient Care Length of Stay for Current Patients

Hospital	# Patients	Length of Stay in Days As of July 8, 2013			Median
		Minimum	Maximum	Mean	
BR	14	27	271	92	67
FAHC	5	52	117	77	73
RRMC	10	12	107	58	50
GMPCC	7	10	187	93	70
Statewide	36	10	271	80	67

Analysis is based on the Inpatient Tracking Spreadsheet maintained by the Department of Vermont Health Access (DVHA). Includes psychiatric hospitalizations with Level 1 designations for hospitalizations occurring at the Brattleboro Retreat (BR), Fletcher Allen Medical Center (FAHC), Rutland Regional Medical Center (RRMC), and Green Mountain Psychiatric Care Center (GMPCC). Level 1 designation is reserved for patients with risk of imminent harm to self or others and requiring significant resources. Length of Stay is calculated from admission to date of report for clients still in inpatient care.

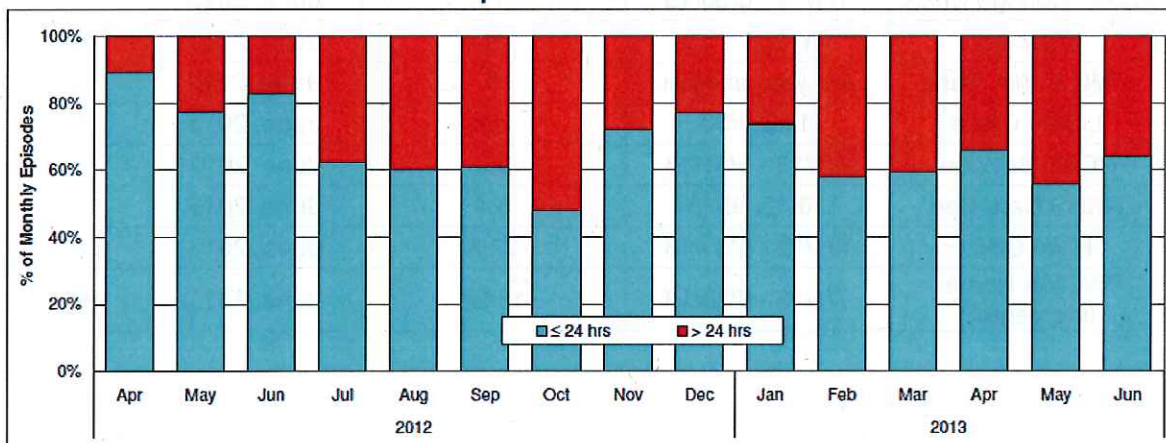
- The number of individuals waiting for admission, including number of individuals treated in each setting and the single combined one-day highest number each month.



MHOC JULY 2013 REPORT
SAO/ 73113

As can be seen below in the following graphs, the number of patients waiting in emergency departments over 24 hours, between June 2012 and June 2013, has increased, although there is no clear pattern noted in the fluctuation. This data includes folks who are waiting in DOC, all Emergency Exams and those people who are directly admitted to a psychiatric unit.

**Wait Times for Involuntary Inpatient Admission
April 2012 - June 2013**



Wait Time	2012							2013							
	Apr	May	Jun	Jul	Aug	Sep	Oct	Nov	Dec	Jan	Feb	Mar	Apr	May	Jun
≤ 24 hrs	33	41	29	28	27	28	24	31	30	39	22	35	31	34	32
> 24 hrs	4	12	6	17	18	18	26	12	9	14	16	24	16	27	18
Total	37	53	35	45	45	46	50	43	39	53	38	59	47	61	50

Analysis conducted by the Vermont Department of Mental Health Research & Statistics Unit.

Analysis based on data maintained by the GMPCC admissions department that is collected from paperwork submitted by crisis and designated agency/hospital screeners. Wait times are defined from determination of need to admission to disposition, less time for medical clearance, for persons on warrant for immediate examination (code 12), application for emergency exam (code 11), and court ordered observations (code 30).

R:\Research\Core Data Elements RS\new run new edwait timegroups and code 30 admit time periods.xls

MHOC JULY 2013 REPORT
SAO/ 73113

3. The total census capacity and average daily census of intensive recovery residence beds, and secure residential daily census information.

- DA Crisis Beds Census Report for FY 13 (not all data was available)

Crisis Bed/DA	Period of LOS	Average LOS days	Period of LOS	LOS time in days
CSAC Cottage Crisis	7/1/12 - 6/30/13	15	June, 2013	30
Alyssum	FY 12-FY 13	9	June, 2013	N/A
CMC Chris' Place	. per year and per	5	June, 2013	5
LCMH Oasis	1/13-6/30	3.6	June, 2013	5.6
NCSS Bayview	4/1/13 - 5/31/13	2.3	June, 2013	2
NKHS Care Bed	10/12 - 6/13	5.4	June, 2013	3
RMH CSID	4/1/12 - 3/31/13	22.8	June, 2013	18.75
WCMH Home Intervention	7/1/12 - 6/30/13	15.27	June, 2013	N/A

MHOC JULY 2013 REPORT
SAO/ 73113

Census for Intensive Residential Recovery Units (June 2013)

It is important to note that the monthly average is 34, without the addition of the Middlesex residence, as it did not go on line until the end of the month. There are currently 4 out of 7 beds occupied at the MTCR facility.

**Intensive Residential Recovery Census Report
BEDS OCCUPIED June 2013**

Intensive Residential - (Adults 18+)												
	Hilltop		Meadowview		Middlesex		Second Spring		State Avg		State Avg Excluding Middlesex	
Total Beds	8		6		7		22		43		36	
	Census	Daily %	Census	Daily %	Census	Daily %	Census	Daily %	Census	Daily %	Census	Daily %
6/1/2013	7	88%	6	100%	-	-	22	100%	35	81%	35	97%
6/2/2013	7	88%	6	100%	-	-	22	100%	35	81%	35	97%
6/3/2013	7	88%	6	100%	-	-	22	100%	35	81%	35	97%
6/4/2013	7	88%	6	100%	-	-	22	100%	35	81%	35	97%
6/5/2013	7	88%	6	100%	-	-	22	100%	35	81%	35	97%
6/6/2013	7	88%	6	100%	-	-	22	100%	35	81%	35	97%
6/7/2013	7	88%	6	100%	-	-	22	100%	35	81%	35	97%
6/8/2013	7	88%			-	-	22	100%	29	67%	29	81%
6/9/2013			6	100%	-	-	22	100%	28	65%	28	78%
6/10/2013	7	88%	6	100%	-	-	22	100%	35	81%	35	97%
6/11/2013	7	88%	6	100%	-	-	22	100%	35	81%	35	97%
6/12/2013	7	88%	6	100%	-	-	22	100%	35	81%	35	97%
6/13/2013	7	88%	6	100%	-	-	21	95%	34	79%	34	94%
6/14/2013	7	88%	6	100%	-	-	21	95%	34	79%	34	94%
6/15/2013	7	88%			-	-	21	95%	28	65%	28	78%
6/16/2013	7	88%	6	100%	-	-	21	95%	34	79%	34	94%
6/17/2013	7	88%	6	100%	-	-	21	95%	34	79%	34	94%
6/18/2013	7	88%	6	100%	-	-	21	95%	34	79%	34	94%
6/19/2013	7	88%	6	100%	-	-	21	95%	34	79%	34	94%
6/20/2013	7	88%	6	100%			21	95%	34	79%	34	94%
6/21/2013	7	88%	6	100%	2	29%	21	95%	36	84%	34	94%
6/22/2013	7	88%	6	100%	2	29%	21	95%	36	84%	34	94%
6/23/2013	7	88%	6	100%			21	95%	34	79%	34	94%
6/24/2013	7	88%	6	100%	2	29%	21	95%	36	84%	34	94%
6/25/2013			6	100%	2	29%	21	95%	29	67%	27	75%
6/26/2013	7	88%	6	100%	2	29%	21	95%	36	84%	34	94%
6/27/2013	7	88%	6	100%	2	29%	21	95%	36	84%	34	94%
6/28/2013	7	88%	6	100%	2	29%	21	95%	36	84%	34	94%
6/29/2013	7	88%	6	100%	2	29%	21	95%	36	84%	34	94%
6/30/2013	7	88%	6	100%	2	29%	21	95%	36	84%	34	94%
Monthly Average	7.00		6.00		2.00		21.40		34.13		33.53	
Monthly % Occupancy	87.5%		100.0%		28.6%		97.3%		79.4%		93.1%	

Based on data reported to the Vermont Department of Mental Health (DMH) by intensive recovery residence beds for adult care using the electronic bed boards system. Programs are expected to report to electronic bed boards a minimum of once per day to update their residential census.

*Middlesex Therapeutic Community Residence began accepting placements on June 20th, 2013 and began reporting to electronic bed boards system on June 21, 2013.

Clients Receiving Crisis Bed Services (Service Code G02)

**Clients Receiving Crisis Bed Services
FY2013 (through May 2013)**

Designated Agency	Clients with Crisis Bed Services	
	#	% Total
HC	406	48%
NCSS	112	13%
UCS	74	9%
WCMH	61	7%
HCRS	57	7%
NKHS	46	5%
LCC	33	4%
RMHS	24	3%
CSAC	16	2%
CMC	9	1%
Total	838	100%

Disposition of patients discharged from psychiatric hospital treatment in June, 2013

There were 27 individuals discharged from hospitals in June, 2013. Fifty-nine percent of these were designated Level I by the DMH. The types of placements varied between approximately 40% returning to the previous placement/residence, to being placed in a lower level of care within the system of community residential programs.

<u>DA</u>	<u># discharged</u>	<u>Type of placement</u>
CMC	Level I: 2	Home Intervention, MTCR
CSAC	Level I: 2	Previous residence, crisis bed
HC	Level I: 5 Invol: 2	5 - previous residence 2 - Pathways
HCRS	Level I: 3 Invol: 3	3 - Alternatives 3 - previous residence
NCSS	Invol: 1	Intensive residential recovery
NKHS	Level I: 1 Invol: 1	Previous residence
RMHS	Level I: 2 Invol: 3	previous residence CSID
UCS	Level I: 1	Intensive residential recovery
WCMH	Invol: 1	Intensive residential recovery
Total	27	

4. The DMH Monthly Snapshot is below. There was a request to provide a benchmark measure for comparison, where available, for the monthly snapshot measures. This is a work in progress and will be available on the August release of the snapshot, which will include data for the month of July.

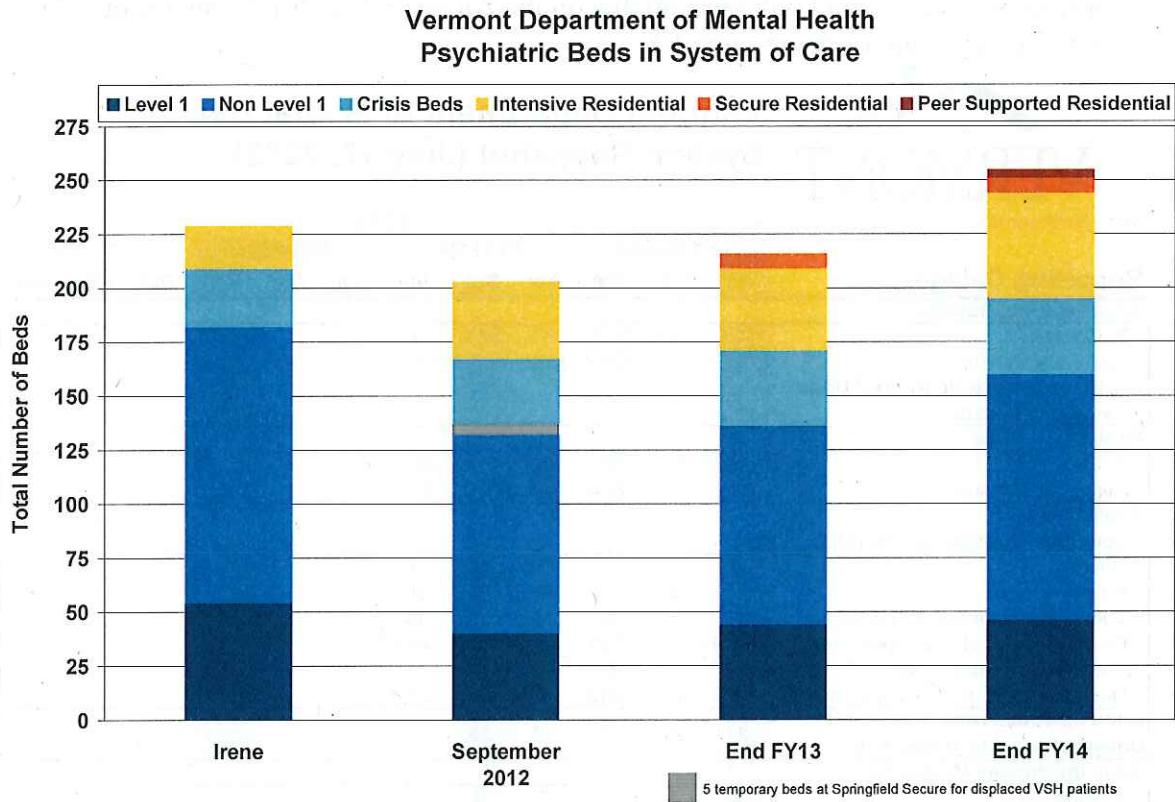


**Vermont Department of Mental Health
System Snapshot (July 17, 2013)**

*data forthcoming

Reporting Category	2013											
	FY13 Q3			FY13 Q4			FY14 Q1			FY14 Q2		
	Jan	Feb	Mar	Apr	May	Jun	Jul	Aug	Sep	Oct	Nov	Dec
Adult Inpatient Hospital												
% Occupancy	94%	91%	92%	84%	87%	93%						
Avg. Daily Census	136.7	132.2	136.4	133.9	135.2	146.0						
Adult Crisis Beds												
% Occupancy	74%	73%	79%	82%	83%	84%						
Avg. Daily Census	27.5	27.7	29.4	28.8	30.7	31.0						
Applications for Involuntary Hospitalizations (EE)												
Children	-	-	-	9	10	6						
Adults	50	32	55	41	55	39						
Total adults admitted with Level 1 Designation (% of Total applications)	19	10	20	18	22	10						
Total adults admitted with CRT Designation (% of Total applications)	38%	31%	36%	44%	40%	26%						
Total adults admitted with CRT Designation (% of Total applications)	13	13	27	19	14	11						
Total adults admitted with CRT Designation (% of Total applications)	26%	41%	49%	46%	25%	28%						
Adult Episodes when Placement Unavailable & Client Held in ED												
	27	21	43	27	38	24						
Adult Involuntary Medications												
# Applications	2	3	3	2	9	4						
# Granted Orders	2	3	2	2	5	2						
Mean time to decision (days)	22	12	20	27	14	10						
Adult Forensic Screenings												
# Requested	11	13	9	10	11	11						
# Inpatient Ordered	3	7	5	5	6	6						
VT Resident Suicides												
Youth (0-17)												
Total	0	0	0	0	0	2						
# with DA contact within previous year	-	-	-	-	-	1						
Adults (18+)												
Total	4	6	10	8	9	2						
# with DA contact within previous year	0	3	2	2	1	0						
Housing												
# Clients permanently housed as a result of new Act79 housing funding	18	21	14	11	14	5						
Total # enrolled to date	98	119	133	144	158	169						
Involuntary Transportation												
Adults (total transports)												
# of Transports	19	17	18	11	18	*						
% Non-Secure	58%	94%	61%	82%	78%	*						
% Secure	42%	6%	39%	18%	22%	*						
% all transports using metal restraints	16%	6%	6%	9%	6%	*						
% all transports using soft restraints	26%	0%	33%	9%	17%	*						
Children Under 10 (total transports)												
# of Transports	3	3	0	0	0	*						
% Non-Secure	100%	100%	-	-	-	*						
% Secure	0%	0%	-	-	-	*						
% all transports using metal restraints	0%	0%	-	-	-	*						
% all transports using soft restraints	0%	0%	-	-	-	*						
CRT Employment												
% Employed	available			available								
Wages per employed client	July 2013			September 2013								

6. Overall Projection for replacement/development of system bed capacity



Respectfully submitted by the Department of Mental Health. Please direct any inquiries for additional data collection or report content development to Susan Onderwyzer at susan.underwyzer@state.vt.us