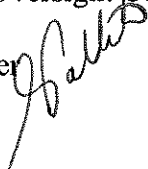




State of Vermont
Department of Corrections
103 South Main Street
Waterbury, VT 05671-1001
www.doc.state.vt.us

[phone] 802-241-2442
[fax] 802-241-2565

Agency of Human Services

TO: Members, Joint Corrections Oversight Committee
FROM: Andrew Pallito, Commissioner 
DATE: November 12, 2014
SUBJECT: Monthly Reports

The attached monthly (October) and quarterly reports are being forwarded to you.

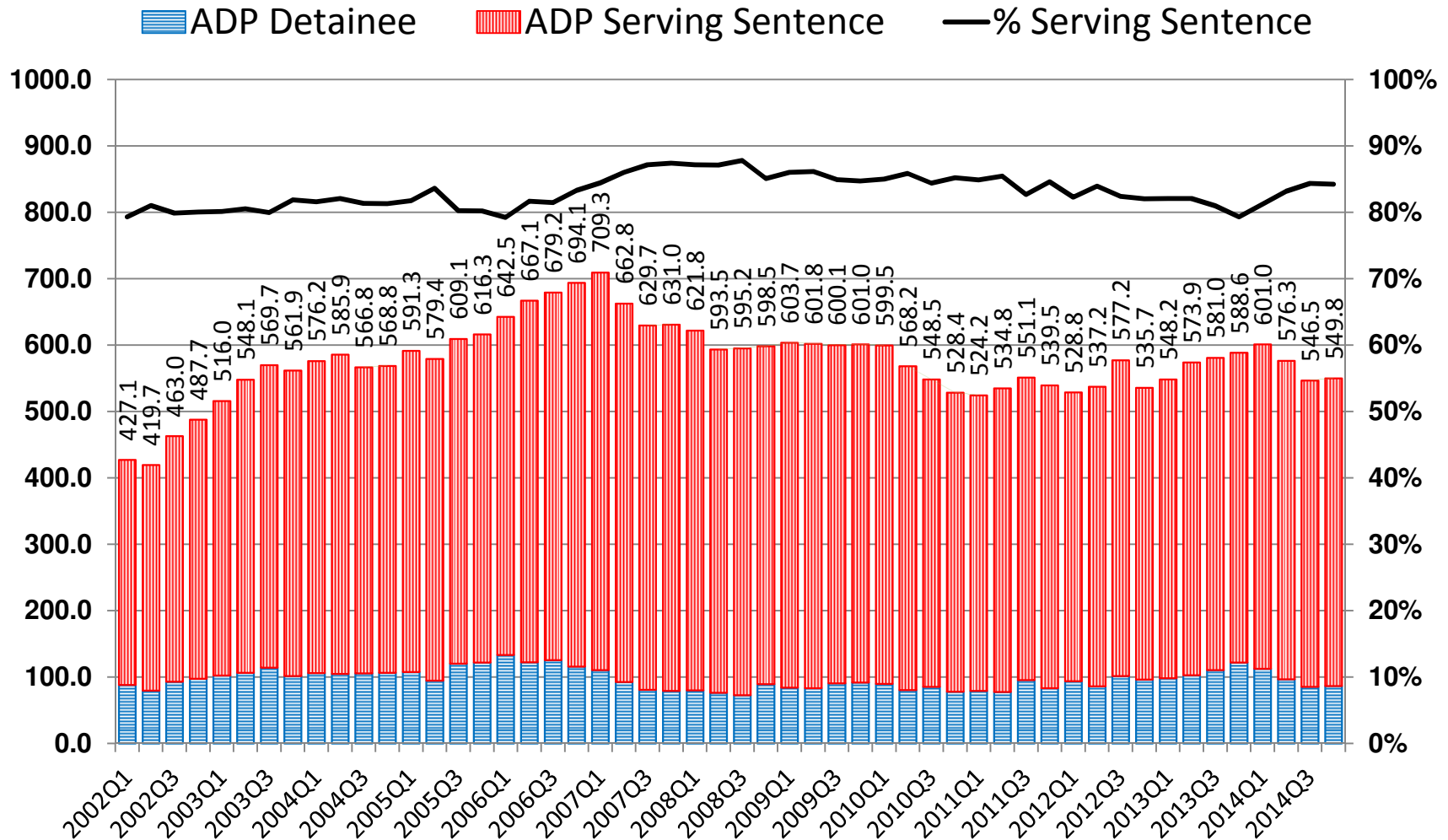
1. Detainees, Average Daily Populations
2. Sex Offenders: Jail & Community Supervision
3. Incarcerated: Property & Drug Felons
4. Inmates Past Min: Lack of Approved Housing
5. Monthly Average Custody Population less Parole & probation July 2014 to Date

If you have any questions, please do not hesitate to contact me.

Attachment(s)

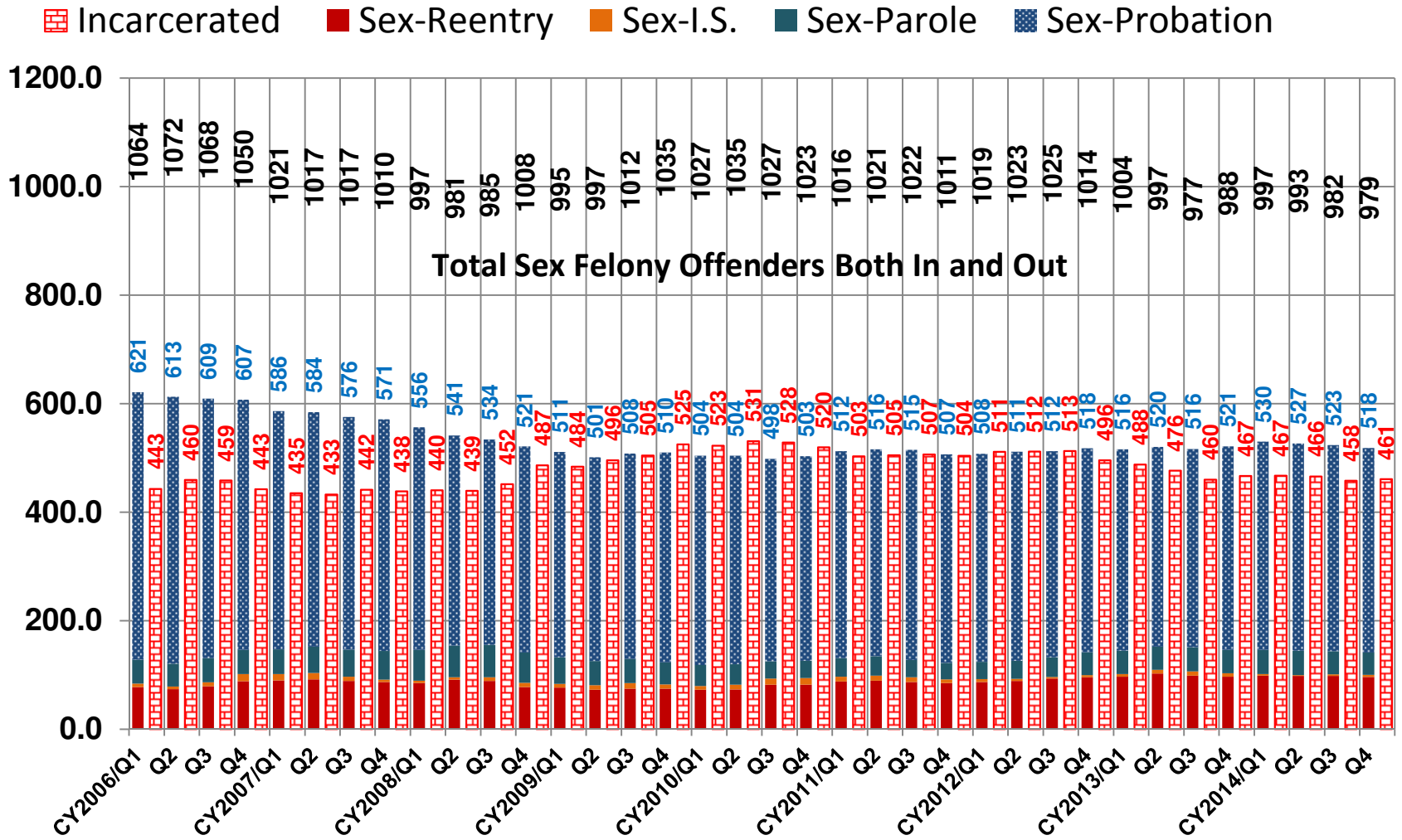
AP/jh

Incarcerated Property & Drug Felons As Most Serious Offense



Persons with both property/drug felonies and more serious (violent) felonies are excluded from these counts. CY2014/Q4 as of October 2014.

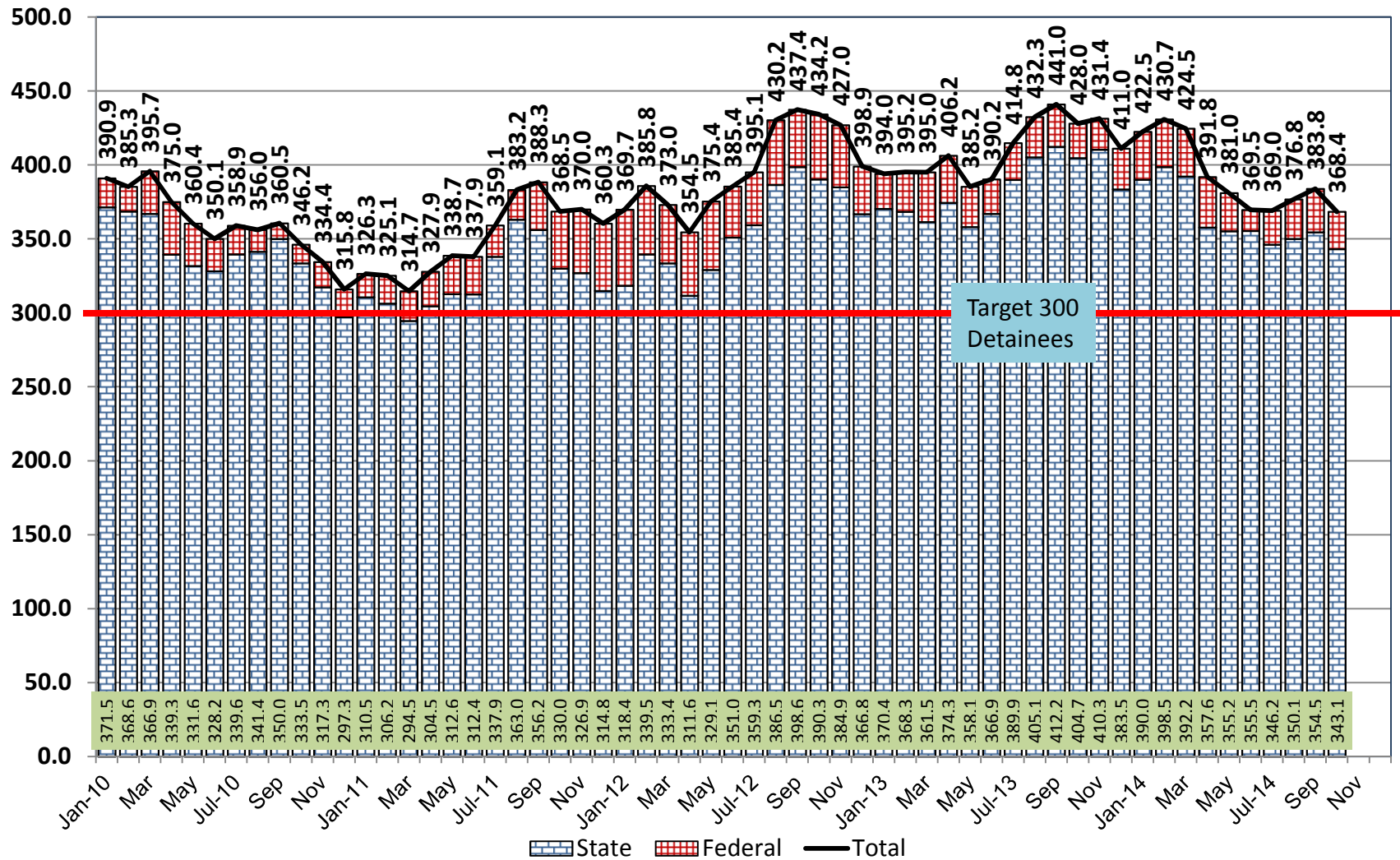
Sex Felony Offenders: Jail & Community Supervision By Legal Status



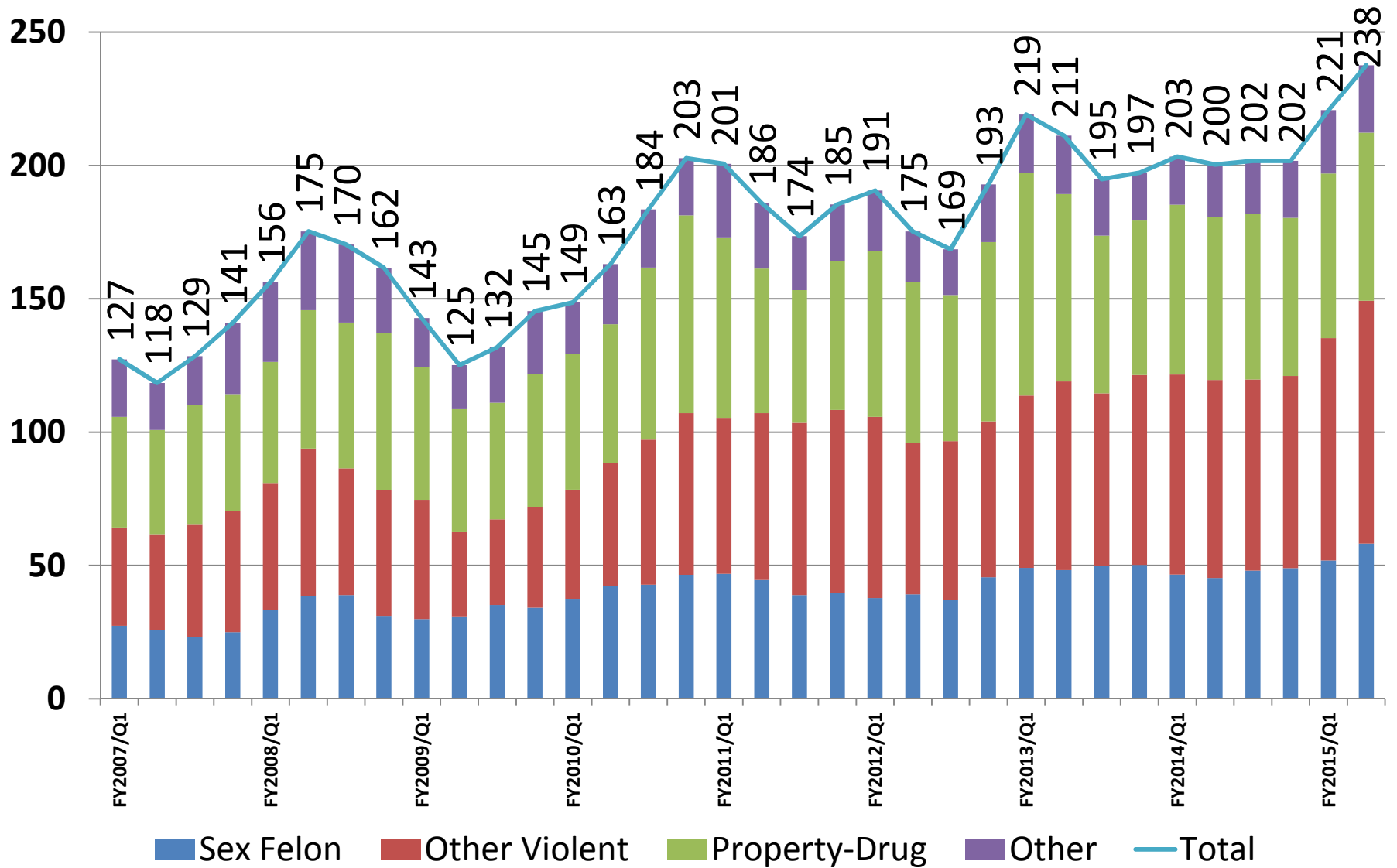
CY2014/Q34 as of October 2014.

Detainees, Average Daily Population

Monthly Counts Since January 2010



Inmates Past Minimum Release, Lacking Housing Breakdown by Type of Offense



FY2015/Q2 as of October 2014

Inmates Past Minimum, Lacking Housing

FYEAR/QTR	Sex Felon	Other Violent	Property-Drug	Other	Total
FY2007/Q1	27.4	36.9	41.5	21.5	127
FY2007/Q2	25.6	36.1	39.1	17.7	118
FY2007/Q3	23.3	42.2	44.6	18.4	129
FY2007/Q4	25.0	45.5	43.7	26.8	141
FY2008/Q1	33.5	47.5	45.4	30.0	156
FY2008/Q2	38.5	55.3	51.9	29.5	175
FY2008/Q3	38.9	47.5	54.7	29.3	170
FY2008/Q4	31.1	47.2	59.0	24.3	162
FY2009/Q1	29.9	44.8	49.7	18.5	143
FY2009/Q2	30.9	31.5	46.1	16.6	125
FY2009/Q3	35.2	32.1	43.7	20.8	132
FY2009/Q4	34.2	37.9	49.8	23.6	145
FY2010/Q1	37.5	41.0	50.9	19.3	149
FY2010/Q2	42.4	46.2	52.0	22.5	163
FY2010/Q3	42.8	54.4	64.5	21.8	184
FY2010/Q4	46.5	60.6	74.2	21.4	203
FY2011/Q1	46.8	58.6	67.6	27.6	201
FY2011/Q2	44.6	62.5	54.2	24.6	186
FY2011/Q3	38.9	64.7	49.8	20.2	174
FY2011/Q4	39.9	68.4	55.7	21.3	185
FY2012/Q1	37.7	68.0	62.3	22.6	191
FY2012/Q2	39.2	56.7	60.4	19.0	175
FY2012/Q3	37.0	59.7	54.8	17.2	169
FY2012/Q4	45.6	58.4	67.2	21.7	193
FY2013/Q1	49.1	64.7	83.5	21.8	219
FY2013/Q2	48.3	70.7	70.3	21.9	211
FY2013/Q3	50.0	64.6	59.2	21.1	195
FY2013/Q4	50.2	71.2	58.0	17.9	197
FY2014/Q1	46.6	75.0	63.7	18.0	203
FY2014/Q2	45.3	74.3	61.0	19.7	200
FY2014/Q3	48.1	71.7	62.0	19.9	202
FY2014/Q4	49.0	72.1	59.3	21.4	202
FY2015/Q1	51.9	83.3	61.8	23.8	221
FY2015/Oct	58.2	91.1	63.1	25.2	238

Monthly Average Custody Population less Parole & Probation - Latest Two Fiscal Years (to date)

Average Monthly Populations -- July 2013 - June 2014														
FY 2014 Month	PAF	SCS	Cond. Reentry	Home Confine	Subtot Comm	Incarc OOS	Incarc. In VT	Subtotal Incarc.	Totals	Home Detainee	Incarc. Detainee	Incarc. Sentd	Incarc. Male	Incarc. Female
Jul	1247	7	773	23	2050	475	1623	2097	4153	6	417	1680	1932	166
Aug	1220	7	761	20	1988	472	1620	2092	4083	3	435	1657	1936	156
Sep	1208	7	738	21	1953	472	1658	2130	4086	2	443	1688	1967	163
Oct	1232	7	763	24	2002	495	1615	2110	4115	3	430	1680	1947	163
Nov	1211	7	765	24	1983	507	1606	2114	4099	3	434	1680	1948	166
Dec	1171	8	782	24	1960	501	1590	2091	4054	3	412	1679	1931	160
Jan	1103	9	770	24	1883	498	1623	2121	4007	3	423	1699	1965	156
Feb	1087	11	778	26	1877	501	1647	2148	4028	4	431	1717	1988	160
Mar	1050	16	787	26	1853	502	1646	2148	4006	4	425	1723	1985	163
Apr	1122	21	784	34	1927	495	1636	2130	4062	4	392	1738	1964	166
May	1128	26	777	36	1931	488	1608	2097	4030	3	382	1715	1932	165
Jun	1114	28	791	41	1933	491	1565	2056	3994	5	370	1687	1905	151
ADP FY2014	1157.8	12.9	772.4	26.8	1969.9	491.4	1619.9	2111.2	4084.7	3.6	416.1	1695.2	1950.0	161.2

Average Monthly Populations -- July 2014 - June 2015														
FY 2015 Month	PAF	SCS	Cond. Reentry	Home Confine	Subtot Comm	Incarc OOS	Incarc. In VT	Subtotal Incarc.	Totals	Home Detainee	Incarc. Detainee	Incarc. Sentd	Incarc. Male	Incarc. Female
Jul	1087	27	794	46	1954	486	1567	2053	4013	6	370	1684	1906	147
Aug	1035	29	793	43	1857	485	1581	2066	3923	4	377	1689	1912	154
Sep	1016	31	791	40	1837	485	1591	2076	3913	4	385	1691	1920	156
Oct	990	36	796	37	1822	474	1587	2061	3883	6	369	1692	1905	156
Nov														
Dec														
Jan														
Feb														
Mar														
Apr														
May														
Jun														
ADP FY2015	1032.0	30.7	793.4	41.7	1897.8	482.5	1581.7	2064.1	3966.7	4.8	375.1	1689.0	1911.0	153.2