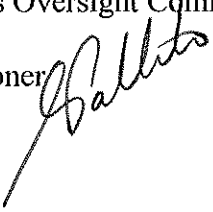




State of Vermont
Department of Corrections
103 South Main Street
Waterbury, VT 05671-1001
www.doc.state.vt.us

[phone] 802-241-2442
[fax] 802-951-5017
[fax] 802-951-5086

Agency of Human Services

TO: Members, Joint Corrections Oversight Committee
FROM: Andrew Pallito, Commissioner 
DATE: August 8, 2014
SUBJECT: Monthly Reports

The attached monthly (July) and quarterly reports are being forwarded to you.

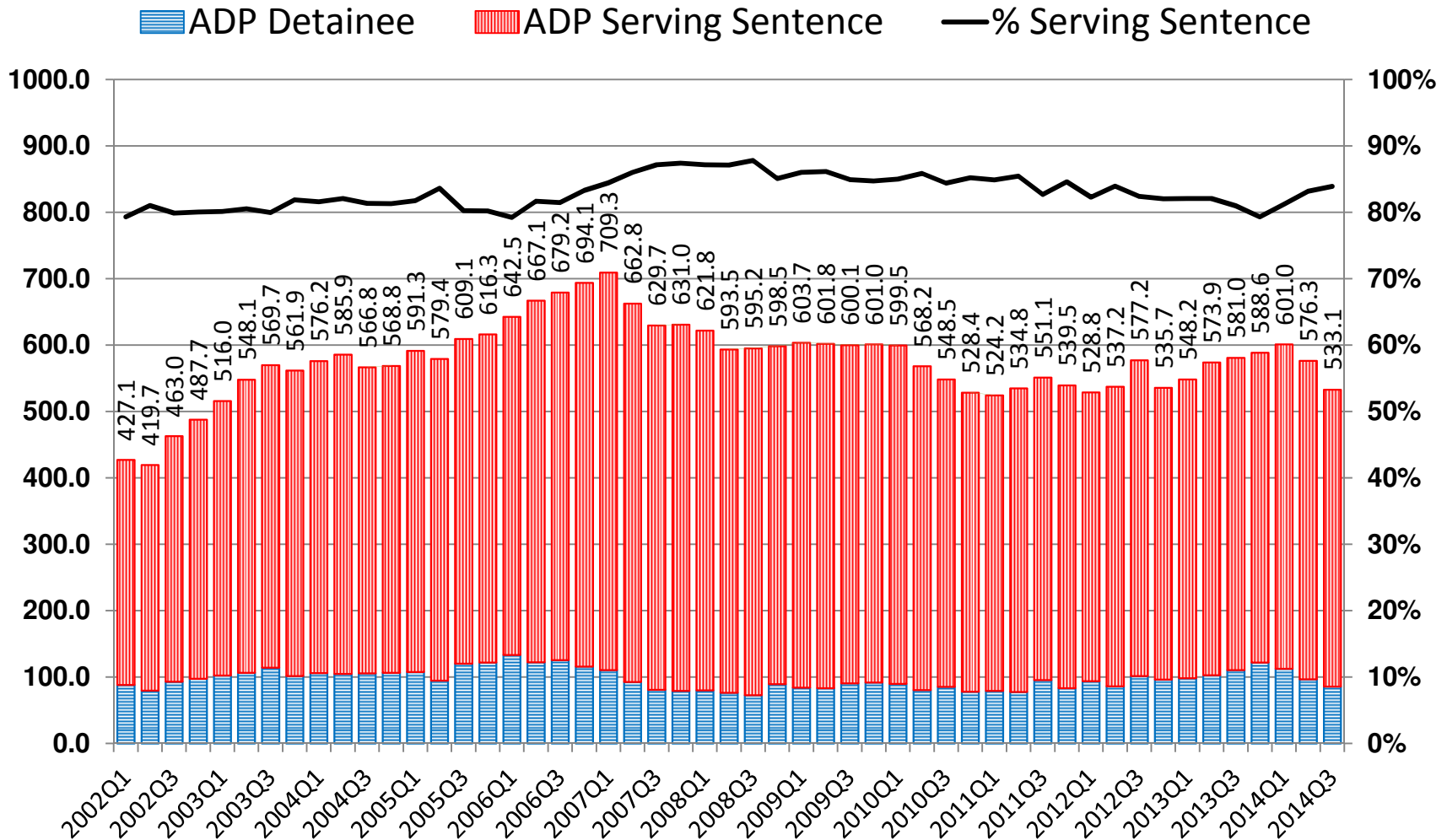
1. Detainees, Average Daily Populations
2. Sex Offenders: Jail & Community Supervision
3. Incarcerated: Property & Drug Felons
4. Inmates Past Min: Lack of Approved Housing
5. Monthly Average Custody Population less Parole & probation July 2013 to Date
6. Segregation and Self Harm Behavior Highlights (May)

If you have any questions, please do not hesitate to contact me.

Attachment(s)

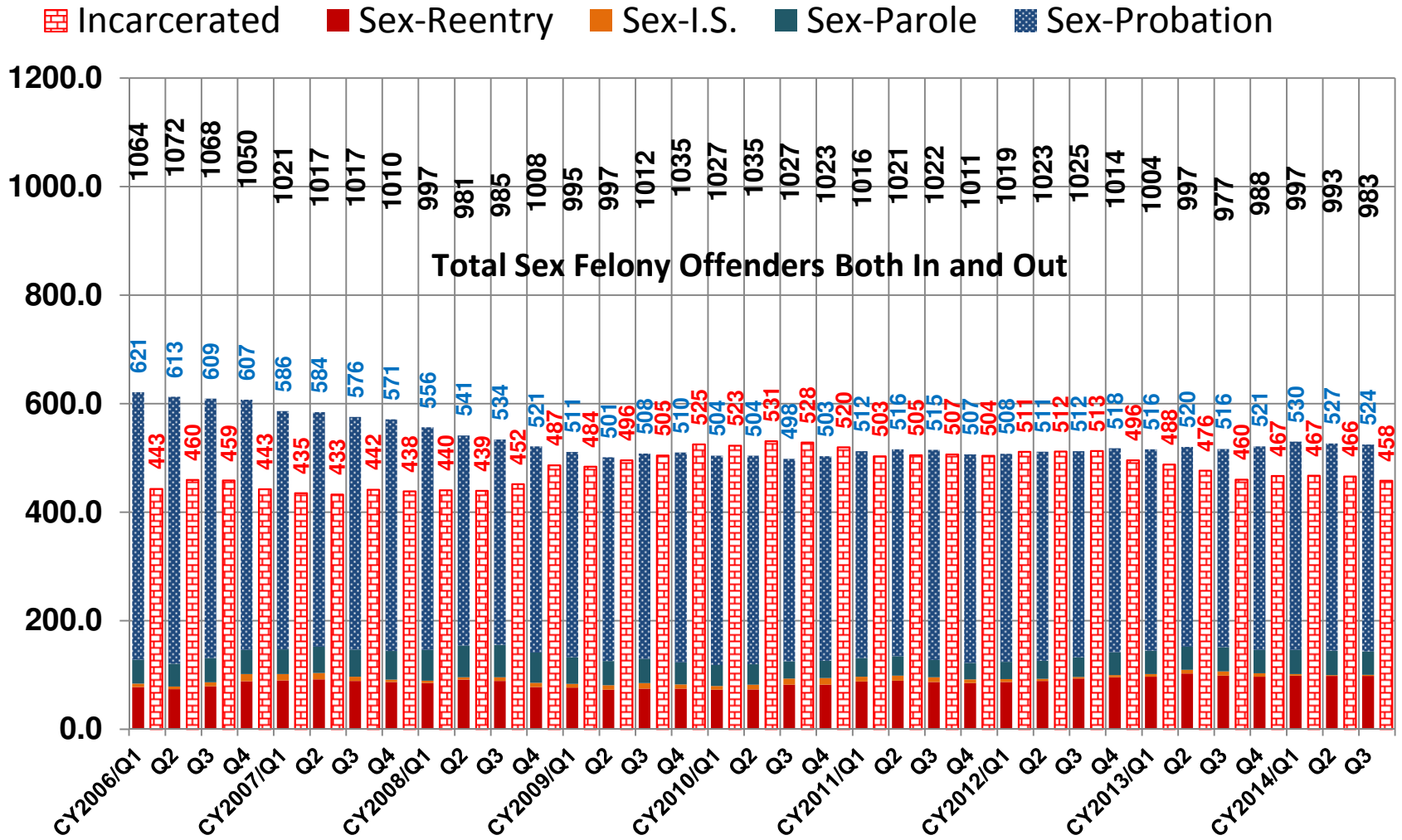
AP/jh

Incarcerated Property & Drug Felons As Most Serious Offense



Persons with both property/drug felonies and more serious (violent) felonies are excluded from these counts. CY2014/Q3 as of July 2014.

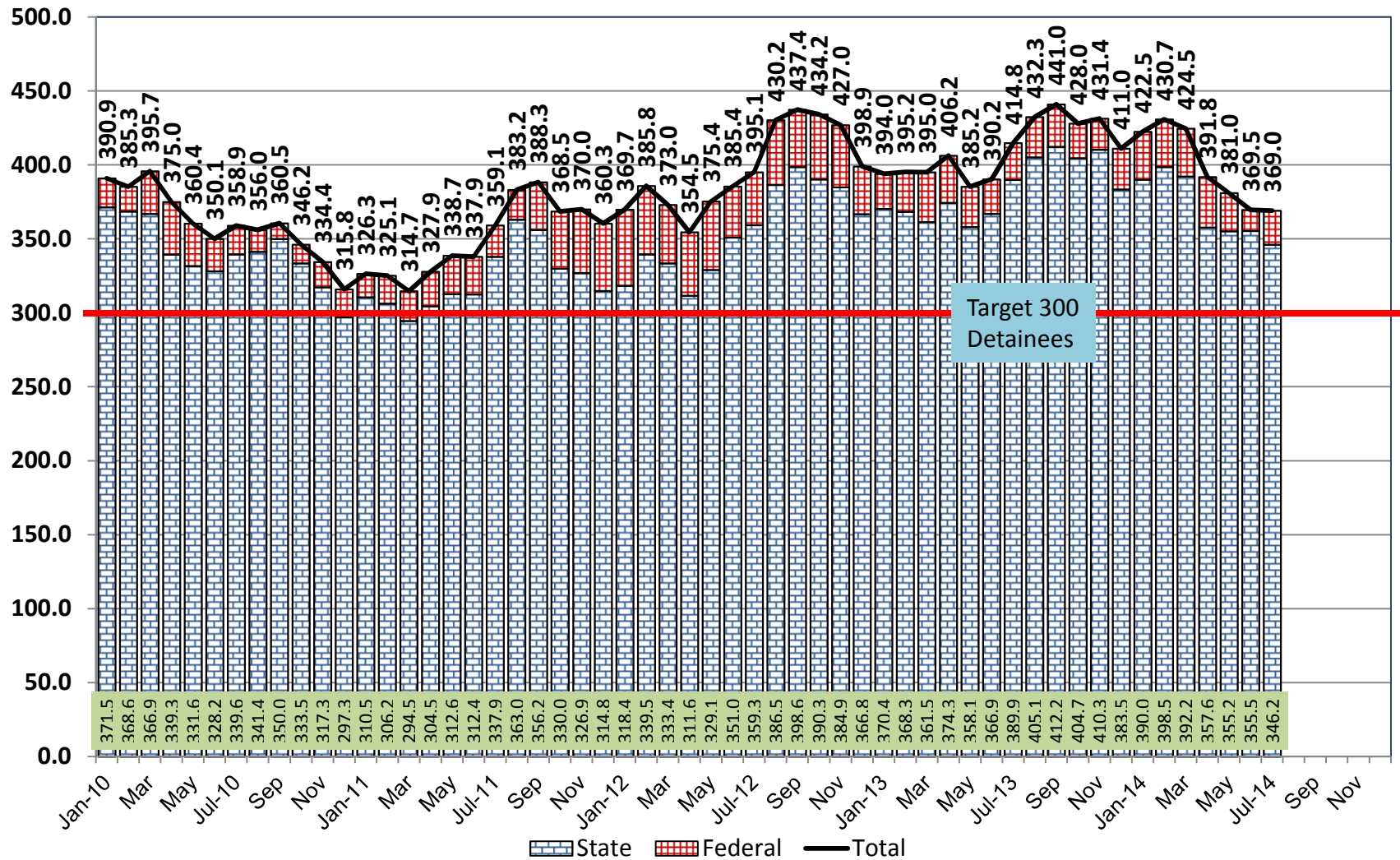
Sex Felony Offenders: Jail & Community Supervision By Legal Status



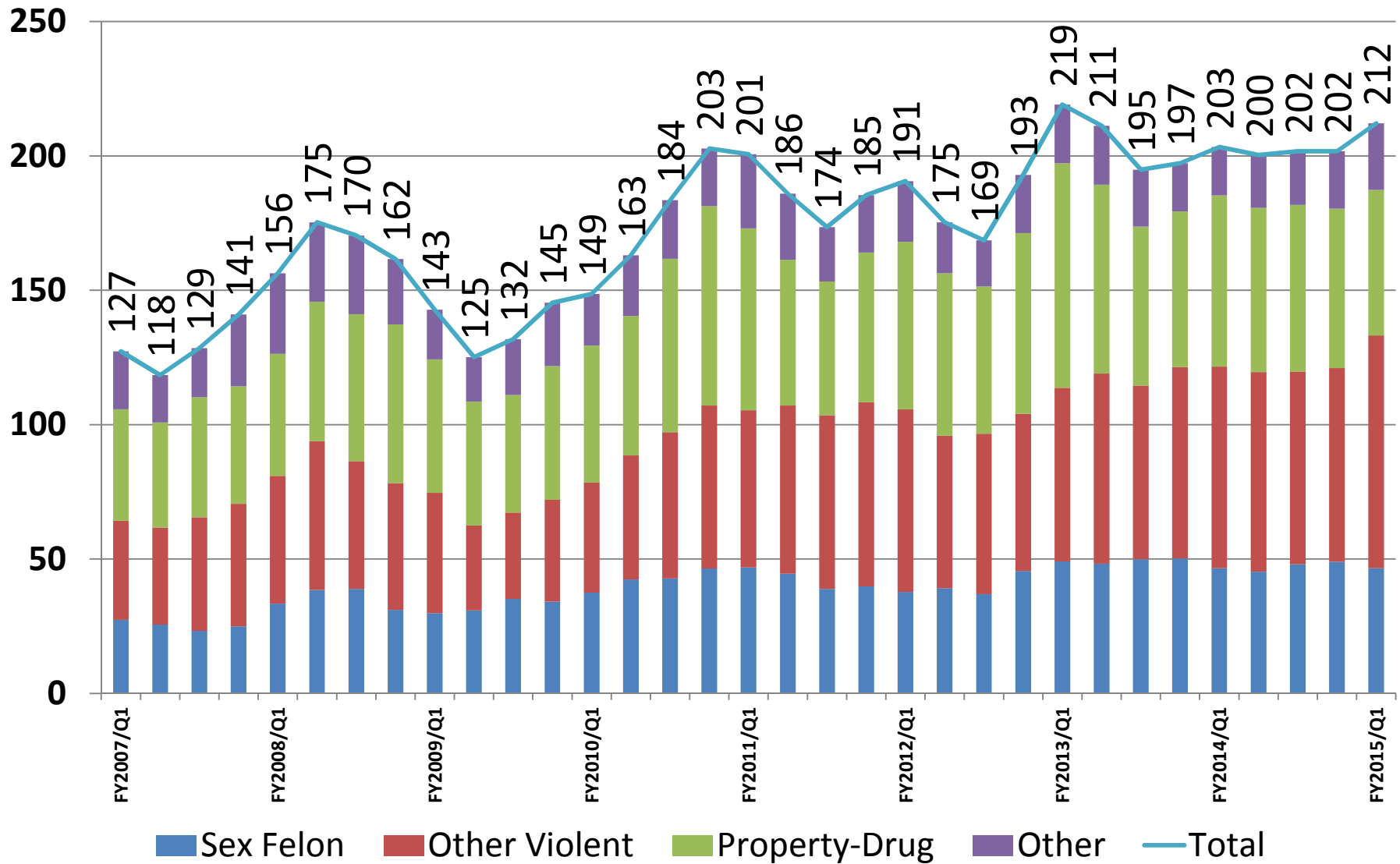
CY2014/Q3 as of July 2014.

Detainees, Average Daily Population

Monthly Counts Since January 2010



Inmates Past Minimum Release, Lacking Housing Breakdown by Type of Offense



FY2015/Q1 as of July 2014

Inmates Past Minimum, Lacking Housing

FYEAR/QTR	Sex Felon	Other Violent	Property-Drug	Other	Total
FY2007/Q1	27.4	36.9	41.5	21.5	127
FY2007/Q2	25.6	36.1	39.1	17.7	118
FY2007/Q3	23.3	42.2	44.6	18.4	129
FY2007/Q4	25.0	45.5	43.7	26.8	141
FY2008/Q1	33.5	47.5	45.4	30.0	156
FY2008/Q2	38.5	55.3	51.9	29.5	175
FY2008/Q3	38.9	47.5	54.7	29.3	170
FY2008/Q4	31.1	47.2	59.0	24.3	162
FY2009/Q1	29.9	44.8	49.7	18.5	143
FY2009/Q2	30.9	31.5	46.1	16.6	125
FY2009/Q3	35.2	32.1	43.7	20.8	132
FY2009/Q4	34.2	37.9	49.8	23.6	145
FY2010/Q1	37.5	41.0	50.9	19.3	149
FY2010/Q2	42.4	46.2	52.0	22.5	163
FY2010/Q3	42.8	54.4	64.5	21.8	184
FY2010/Q4	46.5	60.6	74.2	21.4	203
FY2011/Q1	46.8	58.6	67.6	27.6	201
FY2011/Q2	44.6	62.5	54.2	24.6	186
FY2011/Q3	38.9	64.7	49.8	20.2	174
FY2011/Q4	39.9	68.4	55.7	21.3	185
FY2012/Q1	37.7	68.0	62.3	22.6	191
FY2012/Q2	39.2	56.7	60.4	19.0	175
FY2012/Q3	37.0	59.7	54.8	17.2	169
FY2012/Q4	45.6	58.4	67.2	21.7	193
FY2013/Q1	49.1	64.7	83.5	21.8	219
FY2013/Q2	48.3	70.7	70.3	21.9	211
FY2013/Q3	50.0	64.6	59.2	21.1	195
FY2013/Q4	50.2	71.2	58.0	17.9	197
FY2014/Q1	46.6	75.0	63.7	18.0	203
FY2014/Q2	45.3	74.3	61.0	19.7	200
FY2014/Q3	48.1	71.7	62.0	19.9	202
FY2014/Q4	49.0	72.1	59.3	21.4	202
FY2015/July	46.6	86.6	54.2	24.8	212

Monthly Average Custody Population less Parole & Probation - Latest Two Fiscal Years (to date)

Average Monthly Populations -- July 2013 - June 2014														
FY 2014 Month	PAF	SCS	Cond. Reentry	Home Confine	Subtot Comm	Incarc OOS	Incarc. In VT	Subtotal Incarc.	Totals	Home Detainee	Incarc. Detainee	Incarc. Sentd	Incarc. Male	Incarc. Female
Jul	1247	7	773	23	2050	475	1623	2097	4153	6	417	1680	1932	166
Aug	1220	7	761	20	1988	472	1620	2092	4083	3	435	1657	1936	156
Sep	1208	7	738	21	1953	472	1658	2130	4086	2	443	1688	1967	163
Oct	1232	7	763	24	2002	495	1615	2110	4115	3	430	1680	1947	163
Nov	1211	7	765	24	1983	507	1606	2114	4099	3	434	1680	1948	166
Dec	1171	8	782	24	1960	501	1590	2091	4054	3	412	1679	1931	160
Jan	1103	9	770	24	1883	498	1623	2121	4007	3	423	1699	1965	156
Feb	1087	11	778	26	1877	501	1647	2148	4028	4	431	1717	1988	160
Mar	1050	16	787	26	1853	502	1646	2148	4006	4	425	1723	1985	163
Apr	1122	21	784	34	1927	495	1636	2130	4062	4	392	1738	1964	166
May	1128	26	777	36	1931	488	1608	2097	4030	3	382	1715	1932	165
Jun	1114	28	791	41	1933	491	1565	2056	3994	5	370	1687	1905	151
ADP FY2014	1157.8	12.9	772.4	26.8	1969.9	491.4	1619.9	2111.2	4084.7	3.6	416.1	1695.2	1950.0	161.2

Average Monthly Populations -- July 2014 - June 2015														
FY 2015 Month	PAF	SCS	Cond. Reentry	Home Confine	Subtot Comm	Incarc OOS	Incarc. In VT	Subtotal Incarc.	Totals	Home Detainee	Incarc. Detainee	Incarc. Sentd	Incarc. Male	Incarc. Female
Jul	1087	27	794	46	1954	486	1567	2053	4013	6	370	1684	1906	147
Aug														
Sep														
Oct														
Nov														
Dec														
Jan														
Feb														
Mar														
Apr														
May														
Jun														
ADP FY2015	1086.8	27.3	793.7	46.3	1954.1	485.9	1567.4	2053.3	4013.1	5.8	369.6	1683.7	1906.2	147.1

Vermont Department of Corrections
Segregation and Self Harm

May-14															
Segregation totals									SFI Only						
ADC	Flow Census	Facility	# of I/Ms	# of episodes	Admin episodes	LOS range	Disc episodes	LOS range	Admin			Disc			
									I/Ms	Episodes	LOS range	I/Ms	Episodes	LOS range	
165	354	CRCF													
136	305	MVRCF													
235	420	NERCF													
412	512	NSCF													
206	390	NWSCF													
99	112	SESCF													
354	519	SSCF													
State totals:			0	0	0		0		0	0		0	0		
Statewide ranges:															
Out of State Segregation Summary May 2014															
Segregation totals									SFI totals						
ADC	Flow Census	Facility	# of I/Ms	# of episodes	Admin episodes	LOS range	Disc episodes	LOS range	Admin			Disc			
									I/Ms	Episodes	LOS range	I/Ms	Episodes	LOS range	
448	0	Lee - KY	0	0	0	0	0	0	0	0	0	0	0	0	0
37	0	AZ	0	0	0	0	0	0	0	0	0	0	0	0	0
3	0	Other	0	0	0	0	0	0	0	0	0	0	0	0	0
488	0	OOS total	0	0	0		0		0	0		0	0		
Statewide Ranges:															
2095	2612		0	0	0		0		0	0		0	0		
SFI Inmates in Close Custody Housing Not Appearing in Segregation Section of this Report															
	# Inmates	# episodes	#days												
Facility															
CRCF															
MVRCF															
NERCF															
NSCF															
NWSCF															
SSCF															
State totals:			0	0	0										

A problem in the data entry system has affected the format and formula of "length of stay" numbers. The Department is working to find and correct this problem.

Vermont Department of Corrections
Segregation and Self Harm

SIB Behavior in All Locations - Non-SFI and SFI										
Total Non-SFI					Total SFI					
Rating	B50	B51	B52	B53	Rating	B50	B51	B52	B53	
CRCF	13	1				1				15
MVRCF	1									1
NERCF	7	1								8
NSCF	3					3				6
NWSCF										0
SSCF	17					10				27
State totals:	41	2	0	0	State totals:	14	0	0	0	57
SIB Behavior by SFI Away from General Population										
In Therapeutic Management Units					In Seg or Restricted Close Custody					
Rating	B50	B51	B52	B53	Rating	B50	B51	B52	B53	
CRCF	1									
MVRCF										
NERCF										
NSCF										
NWSCF										
SSCF	2					7				
State totals:	3	0	0	0	State totals:	7	0	0	0	10
KEY			KEY			KEY				
ADC = Average Daily Census	SIB = Self-injurious behavior			CCWC = Caledonia Community Work Camp			(No Seg)			
SFI = Serious Functional Impairment				CRCF = Chittenden Regional Correctional Facility						
I/M = Inmate	B50 = no injury or slight			NSCF = Northern State Correctional Facility						
Admin = Administrative	B51 = minor injury			MVRCF = Marble Valley Regional Correctional Facility						
Disc = Disciplinary	B52 = substantial injury			NERCF = Northeast Regional Correctional Facility						
LOS = Length of Stay	B53 = life threatening injury			NWSCF = Northwest State Correctional Facility						
				SEWC = Southeast Work Camp			(No Seg)			
				SSCF = Southern State Correctional Facility						
				SHCF = Beattyville, KY						