

CTDOT Automated Traffic Safety Enforcement Devices

Elizabeth Keyes
Chief of Legal and Regulatory Affairs
Connecticut Department of Transportation

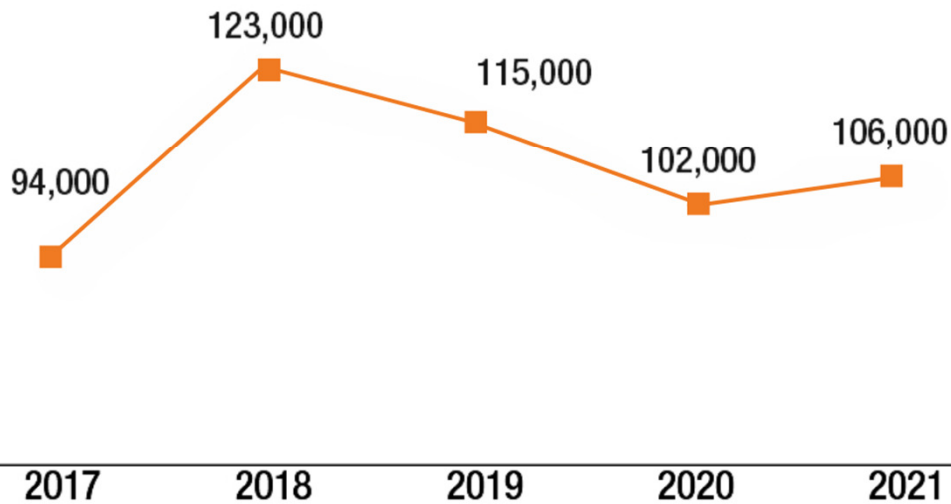
*Presentation and Testimony for Vermont Senate Transportation Committee
February 29, 2024*



The Problem



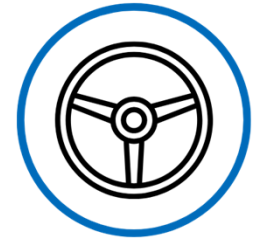
Estimated Total Work Zone Total Crashes



Fatality Analysis Reporting System, National Highway Traffic Safety Administration, U.S. Department of Transportation



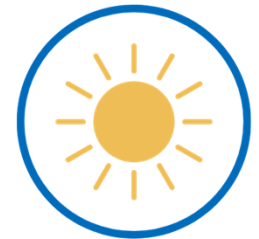
Every
14 MINUTES
There is an Injury in a Work Zone



DRIVERS
Are the Most Frequent Fatality
in Work Zone Crashes



The Majority of Fatal Work Zone Crashes Occur
on Roads with Speed Limits Greater Than
50 MPH



Fatal Work Zone Crashes
Occur Most Often in
SUMMER & FALL

The Problem

Since 2015...



8,369

Work Zone Crashes



29

Work Zone Crash
Related Fatalities



55

Work Zone Crash
Related Serious Injuries



895,928

Total Crashes



2,356

Total Crash Fatalities



76,890

Speeding Related Crashes



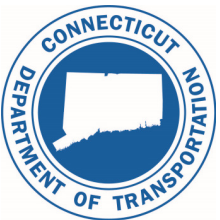
806

Speeding Related
Fatalities

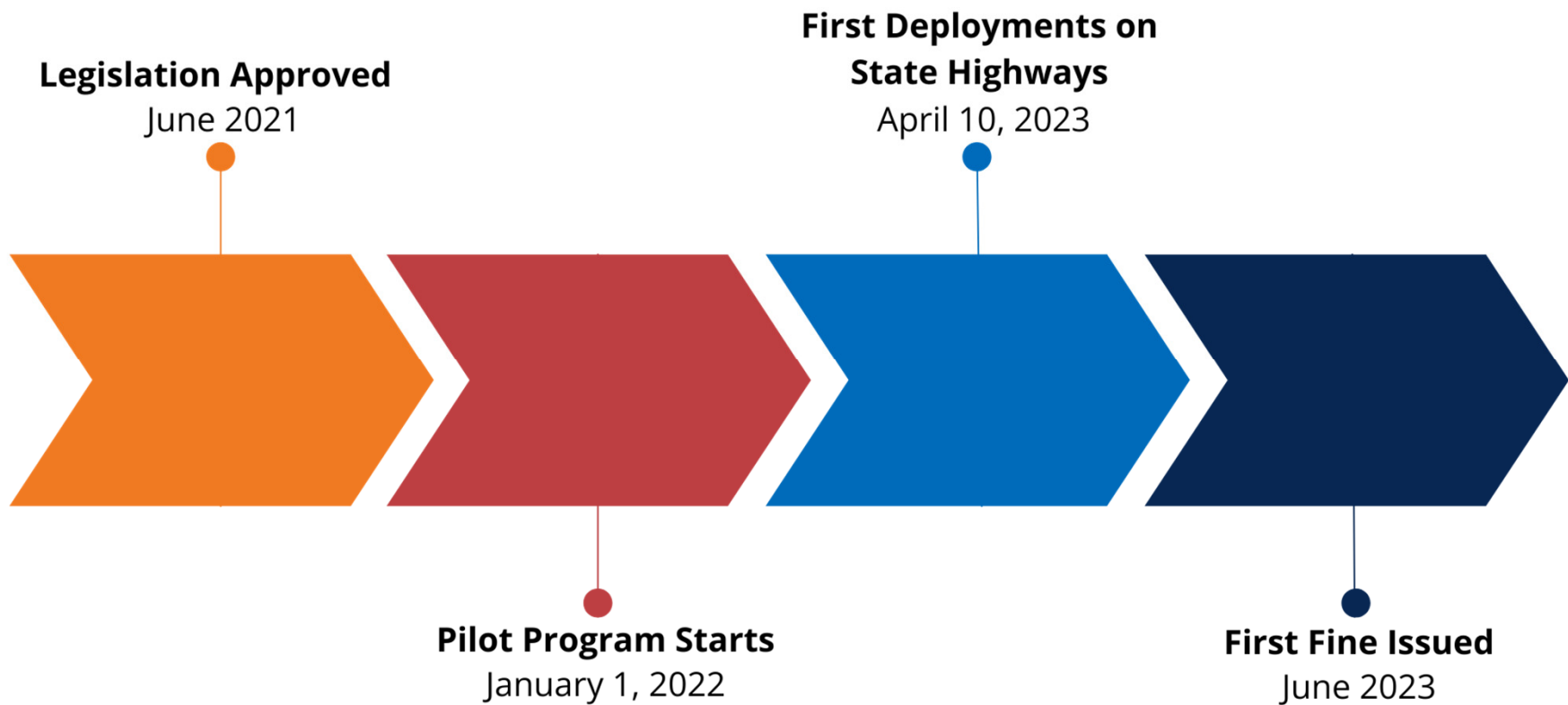


2,115

Work Zone Crash
Related Serious Injuries



Countermeasure Timeline

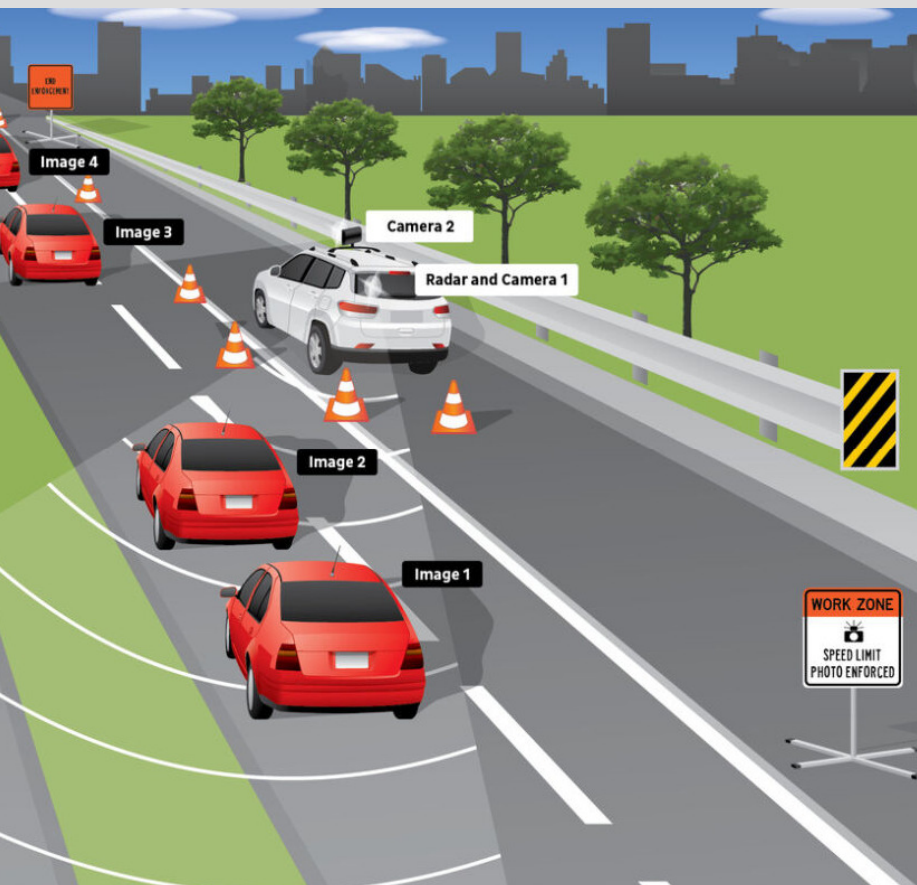


Legislation Overview

- **(3) locations in the state at any one time.**
- **Two conspicuous road signs are placed at a reasonable distance in advance of a highway work zone notifying drivers that a work zone speed control system may be in operation**
- **A notice identifying the location of a work zone speed control system is available on the Internet web site of the department**
- **For a first violation, receive a written warning, (2) for a second violation, be fined seventy-five dollars, (3) for a subsequent violation, be fined one hundred fifty dollars.**
- **No personally identifiable information shall be stored or retained by the department or a vendor unless such information is necessary for the collection and enforcement of the fines imposed pursuant to section 13a-263.**



About the Program



WORK ZONE SPEED SAFETY CAMERA

HOW IT WORKS

- Step 1:** The system identifies any approaching vehicle traveling equal to or faster than 15 mph over the posted speed limit and triggers the camera, which captures the event.
- Step 2:** A series of images are captured of the vehicle as it approaches and passes the speed safety camera, including two photos of the back of the vehicle used to show the distance and time of travel.
- Step 3:** The license plate image is cropped from one of the images captured.
- Step 4:** Data – including the time, date, posted speed, vehicle speed, location, lane, and direction of travel – is collected.

FINES AND PENALTIES

First offense: A written warning with **no fine**

Second offense: A **\$75** fine

Every following offense: A **\$150** fine

Common Questions

- **Where can speed safety cameras be used?**
 - Speed safety cameras may be located within the limits of active work zones on any highway where the posted work zone speed limit is 45 mph or greater.
- **How does CTDOT select work zones where speed safety cameras will be used?**
 - We use a variety of factors; highway and work zone characteristics, speed limits, and if data sensors are present to measure system performance. (ex: East Lyme 1-95 Project)
- **How is the accuracy of the alleged violations verified?**
 - Alleged violations will be reviewed by two trained speed safety system operators and the Connecticut State Police before issuing a Notice of Liability, which will include written verification – including the date of the most recent system inspection – that the speed safety system was operating correctly at the time of the alleged violation.
- **Will points be assessed against driver's license or sent to insurance companies?**
 - **No.** The citation will also not be reported on driving records.
- **Will personal information and data privacy be protected?**
 - **Yes.** Only images of vehicles traveling 15mph or greater than the posted work zone speed limit are taken and stored.

Advertising



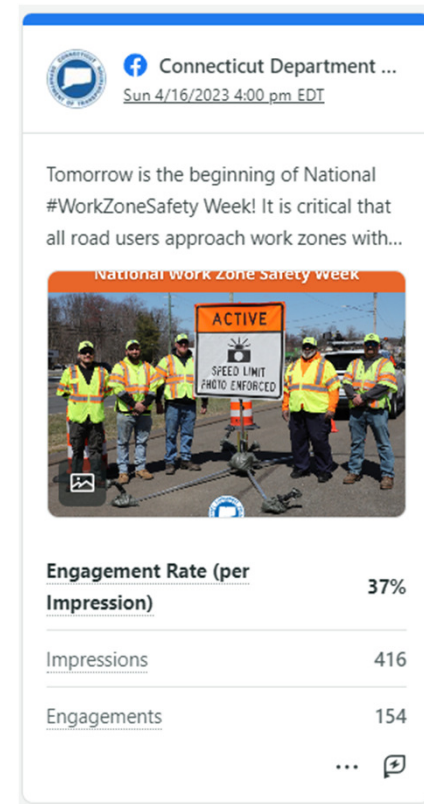
f Connecticut Department ...
Mon 4/10/2023 9:02 am EDT

Starting today, April 10, we're piloting speed safety cameras in select work zones to reduce speeding, which improves...



Community Feedback

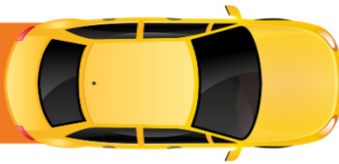
- **“Digital enforcement of speed limits is the solution”**
- **“People are driving like animals and are a danger to everyone. I’m all for anything to curb this.”**
- **“This means potentially fewer cops and fewer problematic interactions.”**
- **“I know a lot of people are worried about their civil liberties, but I think they would prove to help making our roads safer.”**
- **“Cops are a good deterrent and for emergency responses. For catching speeders they’re expensive and impractical.”**
- **“Certainly, saves money as cops aren’t just waiting by the road.”**



Work Zone Speed Camera Data

Final Cumulative Totals

2,640,878 Total Vehicles



500,444 Vehicles Speeding



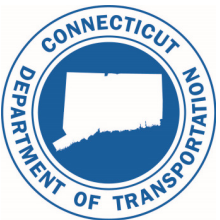
23,825 Warnings Issued



659 Citations Issued



- People are slowing down in the work zones
- The overall reduction of driver speed in tandem with the relatively low percentage of repeat offenders represents a strong indicator that automated speed control technology can be beneficial.



Work Zone Speed Camera Data

Final Cumulative Totals

2,640,878 Total Vehicles



500,444 Vehicles Speeding*



23,825 Warnings Issued



659 Citations

- People are slowing down in the work zones
- The overall reduction of driver speed in tandem with the relatively low percentage of repeat offenders represents a strong indicator that automated speed control technology can be beneficial.



Automated Traffic Enforcement Safety Device

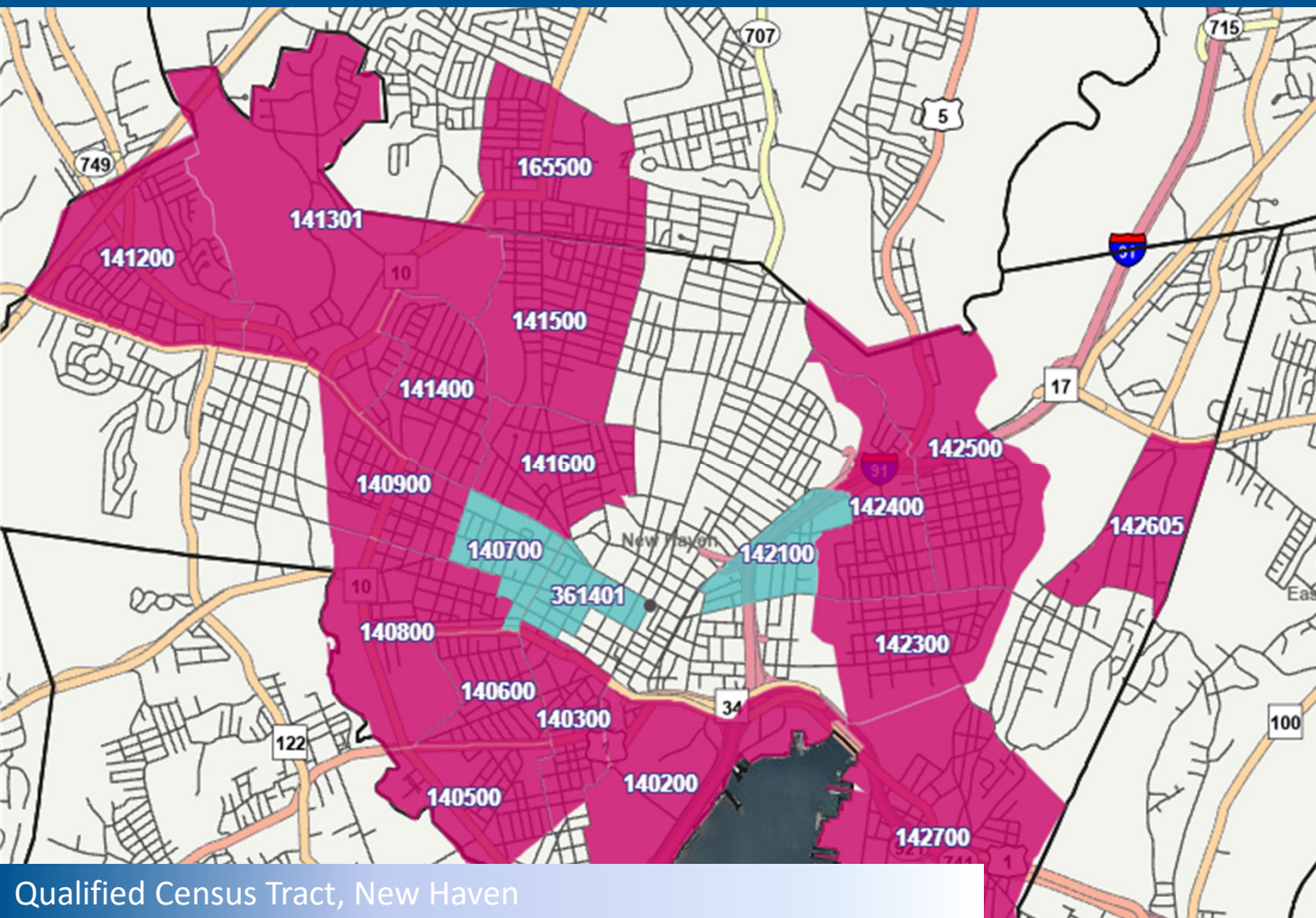


Example of Enforcement Signage

- **Municipal option**
- **DOT evaluates for safety and equitable distribution**
- **Must be a data-driven safety justification for every location**



Automated Traffic Enforcement Safety Device



- No more than 2 devices in a QCT
- Prevents overconcentration at borders with economically disadvantaged communities
- Protecting privacy



Thank you!

Questions?

