



# State FY24/25 Capital Budget Adjustment Proposal & Act 69 of 2023

ANR Section 9 – DWSRF 20% Match and Dam Safety Projects  
Lines 66 and 67 in Capital Budget Adjustment Proposal and  
ARPA FY23 Pollution Control Funds

**HOUSE CORRECTIONS & INSTITUTIONS COMMITTEE - FEBRUARY 14, 2024**

**ERIC BLATT, DIRECTOR OF ENGINEERING, DEPT OF ENVIRONMENTAL  
CONSERVATION**

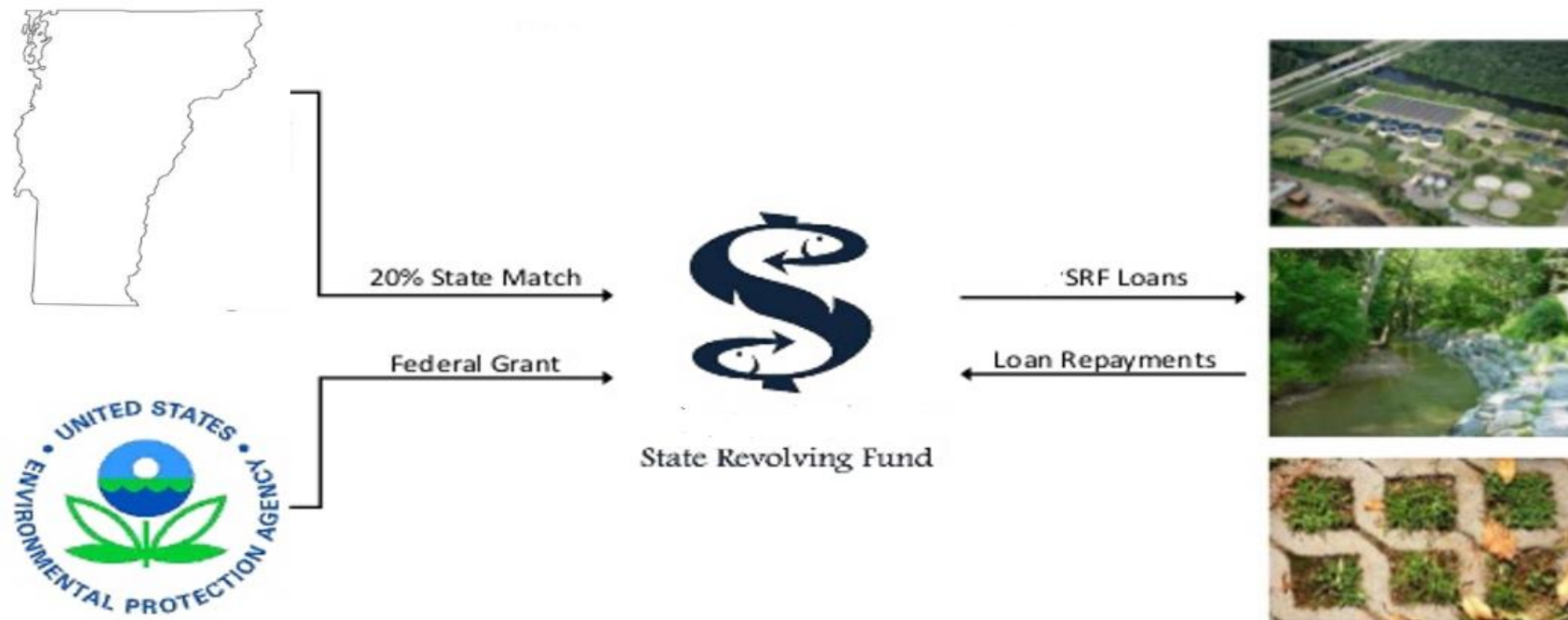
**BEN GREEN, DAM SAFETY CHIEF ENGINEER, DEPT OF ENVIRONMENTAL  
CONSERVATION**

# Section 9 – Act 69 and Capital Budget Adjustment Proposal DWSRF Match & Dam Safety

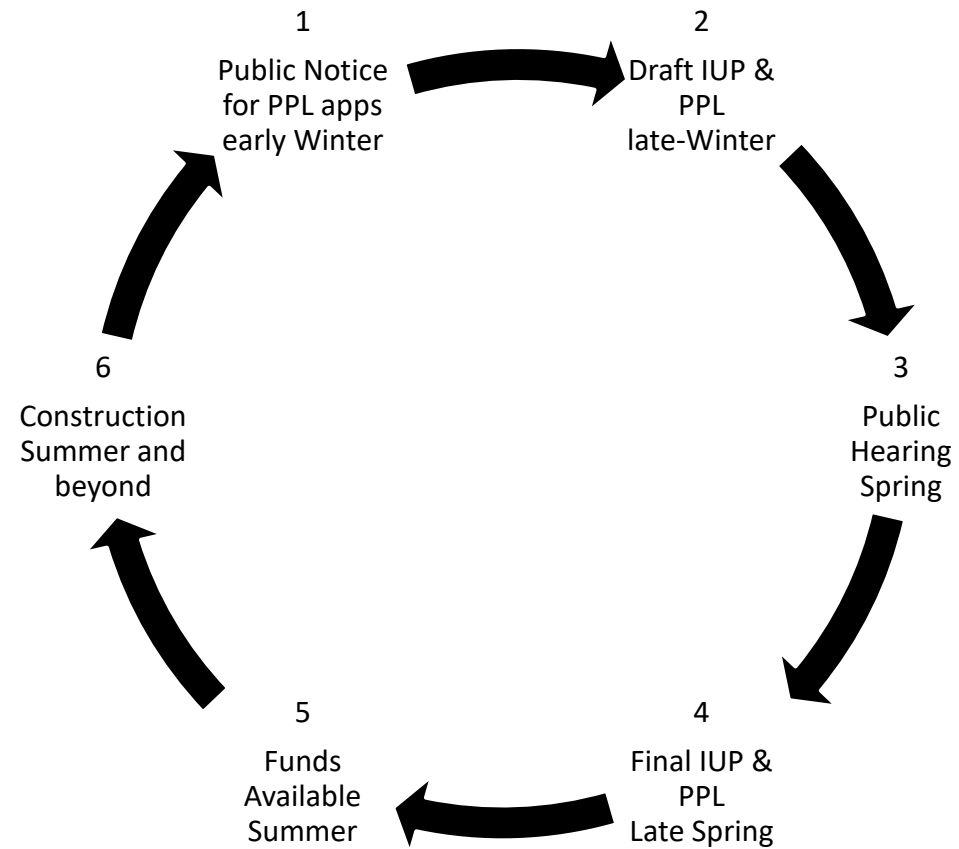
## Section 9

- ▶ Line 66: DWSRF State Match .....\$2,207,901
- ▶ Line 67: Dam Safety Projects .....\$500,000

# Vermont EPA DW Revolving Funds



# SRF Funding Cycle



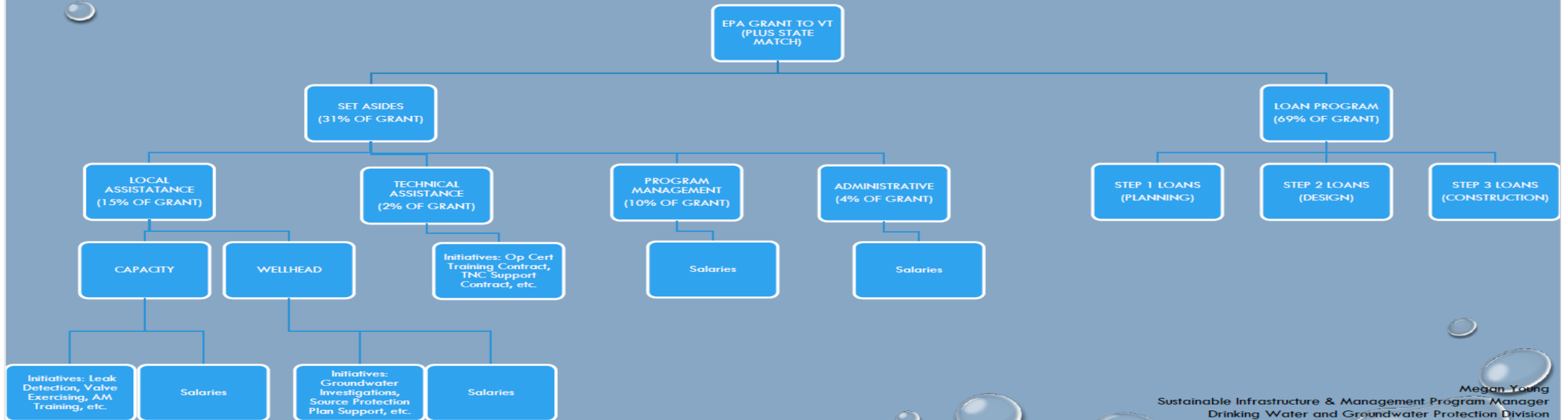
# Uses of the Drinking Water State Revolving Fund (DWSRF)

## DWSRF

- ▶ Planning & Construction Loans for Public Water Systems
- ▶ Municipal and Certain privately owned Public systems serving at least 25 people
- ▶ ~ 700 eligible systems in VT ~ 400 Community Systems and ~ 300 Non-Community systems (roughly half the non-Community Systems are School systems)
- ▶ Set asides for technical assistance and regulatory programs and loan administration

# Drinking Water SRF Federal Funds Uses

## DRINKING WATER STATE REVOLVING LOAN FUND PROGRAM (DWSRF)



# DWSRF Base Grant and State Match

## Drinking Water Federal SRF Base Grant and State Match Schedule (7/1/23 - 6/30/25)

Last Updated 2/14/2023

DEC - Eric Blatt, Water Investment Division

1	2	3	4	5	6	7
Annual Federal DWSRF Grants Award Schedule	Federal Grant	State Match Required 20%	State Match Previously Appropriated	Requested State Match Appropriation		State Match Total Appropriation FY24 & FY25
				FY24	FY25	
Drinking Water Loan Funds						
FFY23 EPA DWSRF Grant (available 10/1/22 - 9/30/24)	4,897,100	979,420	804,834	174,586	0	174,586
FFY24 EPA DWSRF Grant (available 10/1/23 - 9/30/25)	11,010,000	2,202,000	0	0	2,202,000	2,202,000
Total DWSRF FFY23 - FFY24	15,907,100	3,181,420	804,834	174,586	2,202,000	2,376,586
Assume ~ 0.3% bond cost					5,901	5,901
Appropriation Needed				174,586	2,207,901	2,382,487

# DWSRF: Projected Available Funds SFY25

**\$11M**

**FFY24 FEDERAL BASE  
GRANT**

**\$2.2M**

**STATE MATCH**

**\$13.2M**

**TOTAL FEDERAL + STATE**

Additional Sources:

Carry forward funds from FFY23 IUP: \$TBD

Repayments during SFY25: Approximately \$7M



# FY23 ARPA Pollution Control Appropriation

- ▶ Amount appropriated: \$585,000
- ▶ Funds allocated to 3 projects
  - ▶ Hartford Phase II Sewer Rehab.....\$62,556 Grant Approved and Awaiting Award Document – Project Completed
  - ▶ Hardwick WWTF Lagoon Rehab.....\$50,000 Grant Awarded and Project Underway
  - ▶ Brighton WWTF Lagoon Rehab.....\$472,444 Grant Approval Pending and Project Bidding Expected this Spring

# ANR Owned Dams High and Significant Potential Dams

- ▶ A risk assessment at a cost of ~ \$445K was completed December 2023 by the research institute RTI International, which established a risk-based prioritization approach for 18 ANR owned High & Significant Hazard Dams.
- ▶ Prioritization to plan and undertake remedial actions, which includes capital improvements. Initial efforts are focused on the 5 highest priority dams. With \$3.615M of capital funds.
- ▶ \$500K FY24 Appropriated for Dam Safety Projects per Line 67 in CBA Proposal (Act 69 of 2023 Section 9)
- ▶ \$3.115M FY23 Appropriated for Dam Safety Projects

## Portfolio Dam Risk Assessment for Select State of Vermont - ANR-owned HIGH and SIGNIFICANT Hazard Potential Dams

The objective of the risk assessment project is to better understand the vulnerabilities and consequences of these dams while also comparing their relative risk such that a defensible risk priority list can be developed. The risk priority list will be used for allocating current and future assessment and rehabilitation funds to most effectively reduce or “buy down” the ANR’s dam risk profile. The following eighteen (18) dams are included:

Dam Name	Owner	Location (Town)	Hazard Class	Height (ft)	Length (ft)	Storage (acre-ft)	Type	Purpose
East Barre Dam	DEC	Barre Town	HIGH	65	1,630	23,550	Earth Emb.	Flood Control
Wrightsville Dam	DEC	Middlesex	HIGH	115	1,525	36,000	Earth Emb.	Flood Control/Recreation/Hydro
Sweet Pond Dam	FPR	Guilford	HIGH	20	80	216	Conc/Stone	Recreation
Lake Sadawga Dam	DFW	Whitingham	HIGH	19	455	1,939	Earth Emb	Recreation
Lake Sadawga West Dike	DFW	Whitingham	HIGH	10	280	1,500	Earth Emb	Recreation
Lowell Lake Dam	FPR	Londonderry	HIGH	16	225	1,475	Earth Emb	Recreation
Crystal Lake Dam	DEC	Barton	SIGN	17	65	6,740	Conc/Stone	Recreation
Glen Lake Dam	FPR	Castleton	SIGN	14	270	1,735	Conc/Gravity	Recreation
Knapp Brook Site No. 1 Dam	DFW	Cavendish	SIGN	23	400	292	Earth Emb	Recreation
Knapp Brook Site No. 2 Dam	DFW	Cavendish	SIGN	27	540	623	Earth Emb	Recreation
Miles Pond Dam	DEC	Concord	SIGN	23	250	2,200	Conc/Earth Emb	Recreation
Weatherhead Hollow Pond Dam	DFW	Guilford	SIGN	17	340	320	Earth Emb	Recreation
Lake Hortonia Dam	DFW	Hubbardton	SIGN	16	150	4,500	Conc/Gravity	Recreation
Gale Meadows Dam	DFW	Londonderry	SIGN	30	300	2,942	Earth Emb	Recreation
McIntosh Pond Dam	DFW	Royalton	SIGN	25	485	300	Earth Emb	Recreation
Colton Pond Dam	DFW	Killington	SIGN	19	140	330	Earth Emb	Recreation
Kent Pond	DFW	Killington	SIGN	30	1,450	1,160	Earth Emb	Recreation
Adams Reservoir	FPR	Woodford	SIGN	21	200	453	Earth Emb	Recreation

# ANR DAM RISK ASSESSMENT

- 18 ANR Dams, HIGH and SIGNIFICANT Hazard Potential
- Better understand vulnerabilities and consequences of these dams
- Develop Risk Ranking for project prioritization / “buy-down” risk/allocate limited funds
- Cost \$445,000, completed 12/31/2023, (RTI International).

