



**STATE OF VERMONT**  
OFFICE OF LEGISLATIVE COUNCIL

**Witness Information**

**Handouts**

Copies of **handouts** must be **emailed** to the committee assistant at least **24 hours before** your scheduled time. If informed that you must also provide hard copies of your handout, please **bring 10 hard copies** for a Senate Committee and 20 copies for a House committee.

If you want copies made at the state house, there is a charge of \$.10 per printed side. State employees can use transfer numbers to pay for copies made at the State House. Any document you hand out to the committees is by law available to the public.

ATTENTION- With few exceptions, any documents you hand out to a committee, or send to a committee assistant, are open to the public. Public documents not subject to copyright restrictions will be posted to the committee's webpage.

**Equipment**

If you require any special equipment or resources for your testimony, please notify the committee assistant as soon as possible so that arrangements can be made.

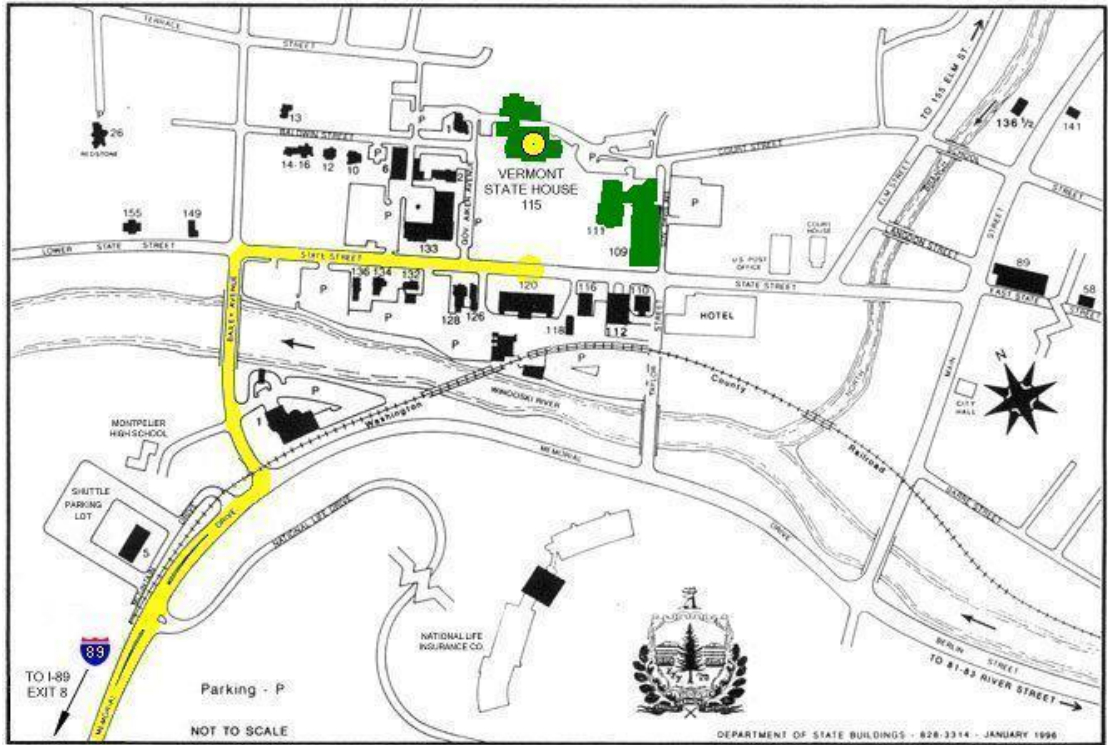
**Phone testimony**

If you have been approved to testify by phone, please provide the committee assistant with a working phone number at least 24 hours before your schedule testimony time. The committee assistant will test this phone number to ensure connectivity. The committee will call you when ready.

**Driving Directions**

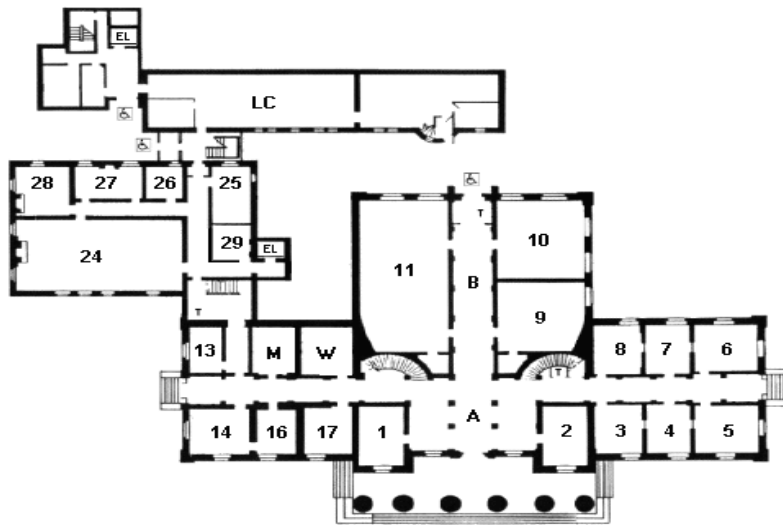
115 State Street  
Montpelier, VT 05641

<b>From I-89:</b>	Take EXIT 8 toward US-2/MONTPELIER/ VT-12/ST. JOHNSBURY.	0.5 miles
1:		
2:	Merge onto MEMORIAL DR.	0.7 miles
3:	Turn LEFT onto US-2/BAILEY AVE	0.1 miles
4:	Turn RIGHT onto STATE ST/US-2 BR/THEODORE ROOSEVELT HWY.	0.2 miles
	Vermont State House, 115 State Street (on left)	0.2 miles




Parking is challenging during the legislative session. You can park on Montpelier streets for up to 2 hours at parking spaces that require quarters, dimes or nickels. There is a shuttle that runs from the parking lot in lower left hand corner of the map above, and also from National Life. The shuttle is free; schedules for the two routes are available online: <http://gmtaride.org/PDF/Web%20Schedules/88.pdf>

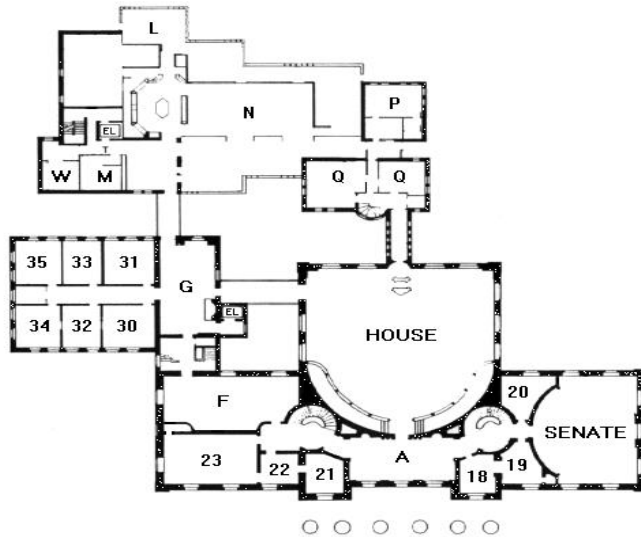
## Floor 1 (Entrance Floor)



## Additional Information

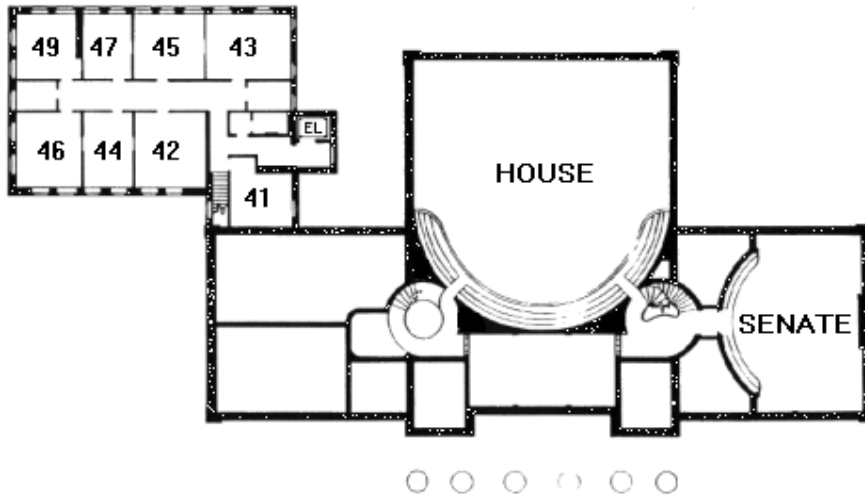
ROOM	KEY
1	Senate Judiciary Committee
2	Sergeant-At-Arms
3	Senate Transportation Committee
4	Senate Government Operations Committee
5	Senate Appropriations Committee
6	Senate Finance Committee
7	Senate Institutions Committee
8	Senate Natural Resources and Energy Committee
9	Coatroom
10	Small Hearing Room
11	Large Hearing Room
13	President <i>Pro Tempore</i> of the Senate
14	Lt. Governor (President of the Senate)
16	Lt. Governor Staff
17	Senate Health and Welfare Committee
24	Legislative Lounge (Old Supreme Court Chamber)
25	Copy Center
26	Senate Agriculture Committee
27	Senate Economic Development, Housing, & General Affairs
28	Senate Education
29	Capitol Police
A	Lobby
B	Hall of Inscriptions (Lincoln Statue)
LC	Legislative Council
T	Public Telephones
M&W	Rest Rooms
EL	Elevator
	Accessible Entrances

## Floor 2



<b>ROOM</b>	<b>KEY</b>
HOUSE	House Chamber
SENATE	Senate Chamber
18	Secretary of the Senate
19	Secretary of the Senate
20	Senate Coatroom
21	Governor's Staff
22	Governor's Staff
23	Governor's Office
30	House Judiciary Committee
31	House Agriculture Committee
32	House Education Committee
33	House Corrections and Institutions Committee
34	House Ways and Means Committee
35	House Commerce and Economic Development Committee
A	House Vestibule (Hall of the Flags)
F	Cedar Creek Room
L	Ethan Allen Room
N	State House Food Court (Abbey Group)
P	Speaker of the House
Q	Clerk of the House
T	Public Telephones
M&W	Rest Rooms
EL	Elevator

## Floor 3



### ROOM

### KEY

41	House General, Housing and Military Affairs Committee
42	House Appropriations Committee
43	House Transportation Committee
44	House Natural Resources & Energy Committee
45	House Health Care Committee
46	House Human Services Committee
47	House Fish, Wildlife, and Water Resources Committee
49	House Government Operations Committee
HOUSE	House Chamber Balcony
SENATE	Senate Chamber Balcony
EL	Elevator

There is a coat room near the Sergeant-At-Arms Office in the center of the main floor. You can store outerwear there.

Occasionally we must cancel hearings. We will attempt to notify you as soon as we hear of cancellations or postponements.

If the weather is bad, you can testify by phone rather than chance dangerous driving conditions.

The agenda for committees is updated continually. You can check the agenda at: <http://www.leg.state.vt.us>

If you have any questions, please contact Jeannie Lowell at [jlowell@leg.state.vt.us](mailto:jlowell@leg.state.vt.us) or call 802-828-3805.