



STATE OF VERMONT
OFFICE OF LEGISLATIVE COUNCIL

Witness Information

Handouts

Please make sure to put a title, date, and your name on the top of each document submitted for testimony.

Copies of handouts must be emailed to Linda Leehman at lleezman@leg.state.vt.us at least 24 hours before your scheduled time. In addition, please also bring 12 hard copies of your handout.

If you want copies made at the State House, there is a charge of \$.10 per printed side. State employees can use transfer numbers to pay for copies made at the State House. Any document you hand out to the committees is by law available to the public.

ATTENTION- With few exceptions, any documents a witness submits to a committee or to a committee assistant are open to the public.

In addition, a witness' submission of a document authored by the witness or his or her organization constitutes consent to its posting on the committee's webpage, unless the witness specifically requests that the document not be posted. Although the committee will honor requests not to post such documents on its webpage, once a witness submits a document to the committee, it is a public record and will be subject to public inspection and copying unless exempt under the Public Records Act.

The agenda for committees is updated continually. The committee's information page is available at this url:

<http://legislature.vermont.gov/committee/detail/2016/8>

Equipment

If you require any special equipment or resources for your testimony, please notify the committee assistant as soon as possible so that arrangements can be made.

Phone testimony

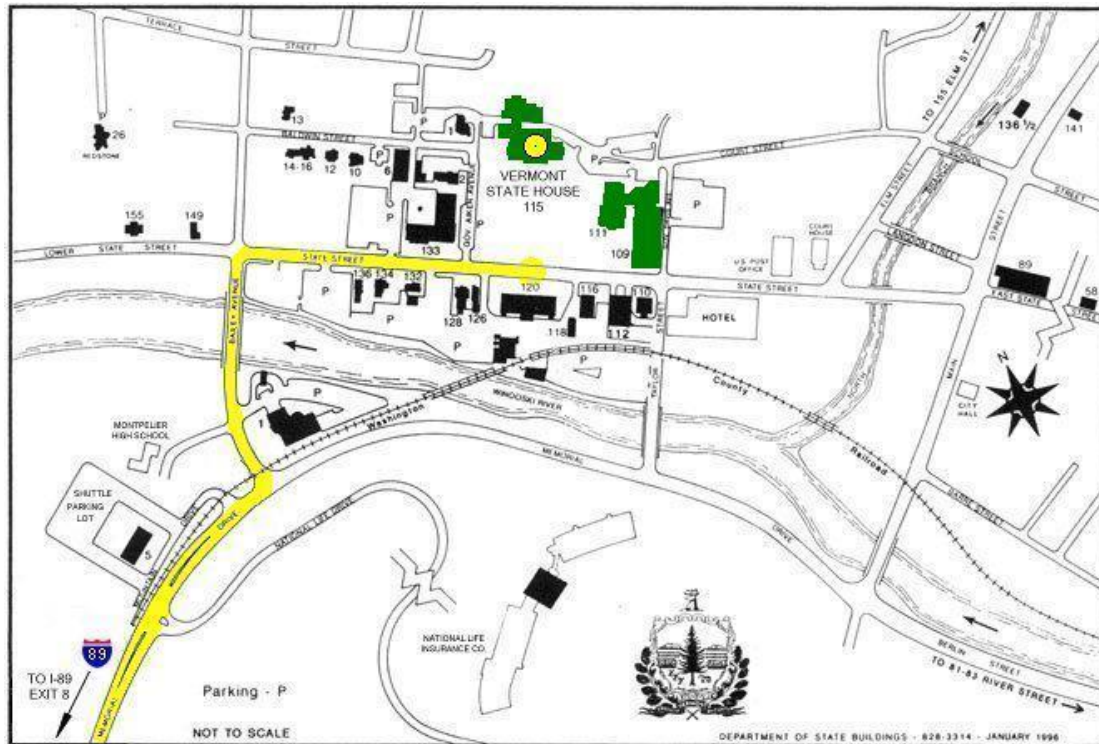
If you have been approved to testify by phone, please provide the committee assistant with a working phone number at least 24 hours before your scheduled testimony time. The committee assistant will test this phone number to ensure connectivity. The committee will call you when ready.

Driving Directions

The House Agriculture and Forestry Committee is located in Room 31 of the State House.

115 State Street
Montpelier, VT 05641

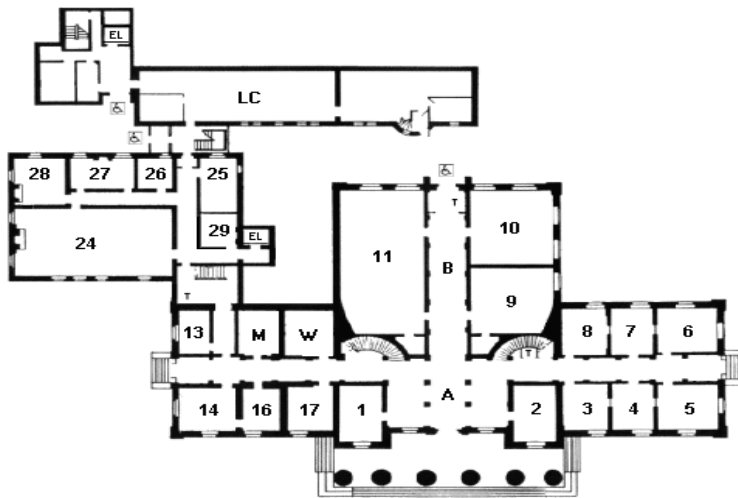
| | | |
|-------------------|--|-----------|
| From I-89: | Take EXIT 8 toward US-2/MONTPELIER/ VT-12/ST. JOHNSBURY. | 0.5 miles |
| 1: | Merge onto MEMORIAL DR. | 0.7 miles |
| 2: | Turn LEFT onto US-2/BAILEY AVE | 0.1 miles |
| 3: | Turn RIGHT onto STATE ST/US-2 BR/THEODORE ROOSEVELT HWY. | 0.2 miles |
| 4: | Vermont State House, 115 State Street (on left) | 0.2 miles |



Parking is challenging during the legislative session. You can park on Montpelier streets for up to 2 hours at parking spaces that require quarters, dimes, or nickels. There is a shuttle that runs from the parking lot in lower left-hand corner of the map above. The shuttle is free; schedules is available online:

http://ridegmt.com/wp-content/uploads/Capital-Shuttle_Current2.pdf


Floor 1 (Entrance Floor)



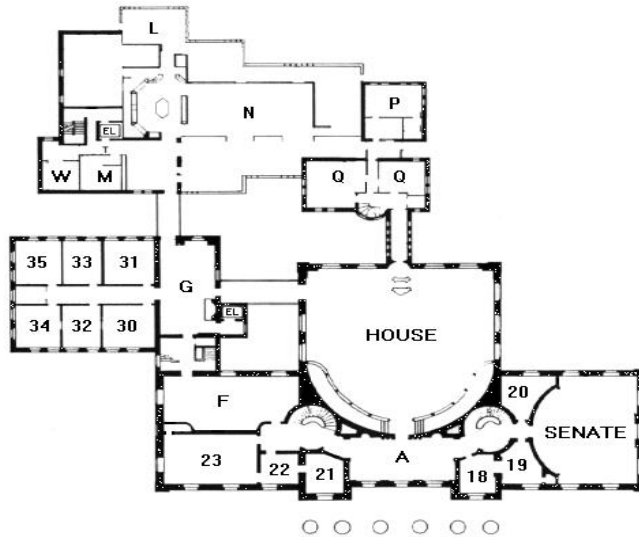
ROOM

KEY

- | | |
|----|---|
| 1 | Senate Judiciary Committee |
| 2 | Sergeant-At-Arms |
| 3 | Senate Transportation Committee |
| 4 | Senate Government Operations Committee |
| 5 | Senate Appropriations Committee |
| 6 | Senate Finance Committee |
| 7 | Senate Institutions Committee |
| 8 | Senate Natural Resources and Energy Committee |
| 9 | Coatroom |
| 10 | Small Hearing Room |
| 11 | Large Hearing Room |
| 13 | President <i>Pro Tempore</i> of the Senate |
| 14 | Lt. Governor (President of the Senate) |
| 16 | Lt. Governor's Staff |
| 17 | Senate Health and Welfare Committee |
| 24 | Legislative Lounge (Old Supreme Court Chamber) |
| 25 | Copy Center |
| 26 | Senate Agriculture Committee |
| 27 | Senate Economic Development, Housing, and General Affairs |
| 28 | Senate Education Committee |
| 29 | Capitol Police |

- A Lobby
- B Hall of Inscriptions (Lincoln Statue)
- LC Legislative Council
- T Public Telephones
- M&W Rest Rooms
- EL Elevator
-  Accessible Entrances

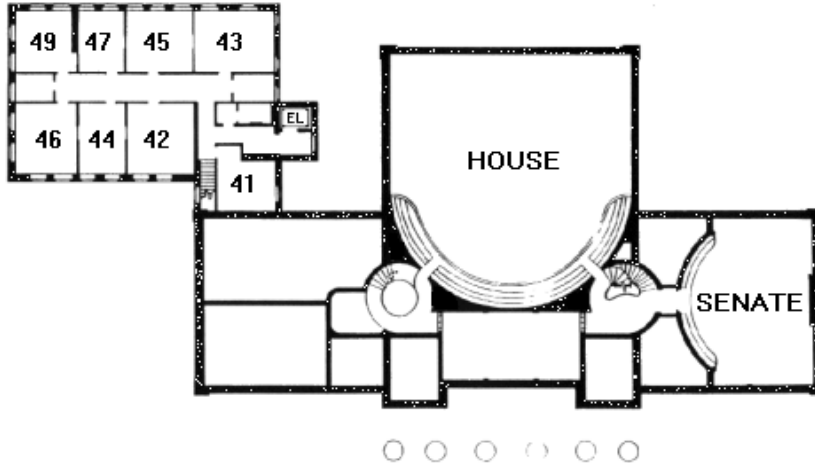
Floor 2



| ROOM | KEY |
|-------------|---|
| HOUSE | House Chamber |
| SENATE | Senate Chamber |
| 18 | Secretary of the Senate |
| 19 | Secretary of the Senate |
| 20 | Senate Coatroom |
| 21 | Governor's Staff |
| 22 | Governor's Staff |
| 23 | Governor's Office |
| 30 | House Judiciary Committee |
| 31 | House Agriculture and Forest Products Committee |
| 32 | House Education Committee |
| 33 | House Corrections and Institutions Committee |
| 34 | House Ways and Means Committee |
| 35 | House Commerce and Economic Development Committee |
| A | House Vestibule (Hall of the Flags) |
| F | Cedar Creek Room |

- L Ethan Allen Room
- N State House Food Court (Abbey Group)
- P Speaker of the House
- Q Clerk of the House
- T Public Telephones
- M&W Rest Rooms
- EL Elevator

Floor 3



| ROOM | KEY |
|-------------|---|
| 41 | House General, Housing and Military Affairs Committee |
| 42 | House Appropriations Committee |
| 43 | House Transportation Committee |
| 44 | House Natural Resources and Energy Committee |
| 45 | House Health Care Committee |
| 46 | House Human Services Committee |
| 47 | House Fish, Wildlife, and Water Resources Committee |
| 49 | House Government Operations Committee |
| HOUSE | House Chamber Balcony |
| SENATE | Senate Chamber Balcony |
| EL | Elevator |

There is a coat room near the Sergeant-At-Arms Office in the center of the main floor. You can store outerwear there.

Occasionally we must cancel hearings. We will attempt to notify you as soon as we hear of cancellations or postponements.

If the weather is bad, you can testify by phone rather than chance dangerous driving conditions. Please call the number below to arrange telephone testimony.

If you have further questions, please contact Linda at lleezman@leg.state.vt.us, (802)828-2233.