

# Vermont Division for Historic Preservation

## – Capital Construction Bill

• Major Maintenance for State-owned Historic Sites	\$350,000
• Historic Preservation Grants	\$300,000
• Barn Preservation Grants	\$300,000
• Unmarked Burial Fund	\$ 63,000
• Roadside Historic Site Markers	\$ 25,000
• Underwater Preserves	\$ 25,000
	(one-time \$ 10,000)

# Major Maintenance for State-Owned Historic Sites

---

## Moore-Blanchard Barn, Plymouth Notch

President Calvin Coolidge State Historic Site

Purchased by State of Vermont/Division for  
Historic Preservation in 1991



### History:

- 1792 construction by Ephraim Moore, one of 1<sup>st</sup> Plymouth Notch settlers
- Five generations of Moores and Blanchards used Barn
- Includes attached animal stalls, milkhouse, sheep barn, tractor/carriage shed

### Significance:

- ✓ One of the few remaining late-18<sup>th</sup>-century timber-framed barns in Vermont
  - ✓ Shows early scribe-rule construction
- ✓ Documents the evolution of hill-farming from late-18<sup>th</sup>-century settlement period to mid-20<sup>th</sup> century in Vermont

### Structural Issues:

- Distortion of framing causing joinery to disengage
- Leaking roof, with rotting plate and rafter segments
- Ground water and drainage problems rotting sills and foundation





**1900**

**1850s**

**1792**

**1940s**

**1950s**











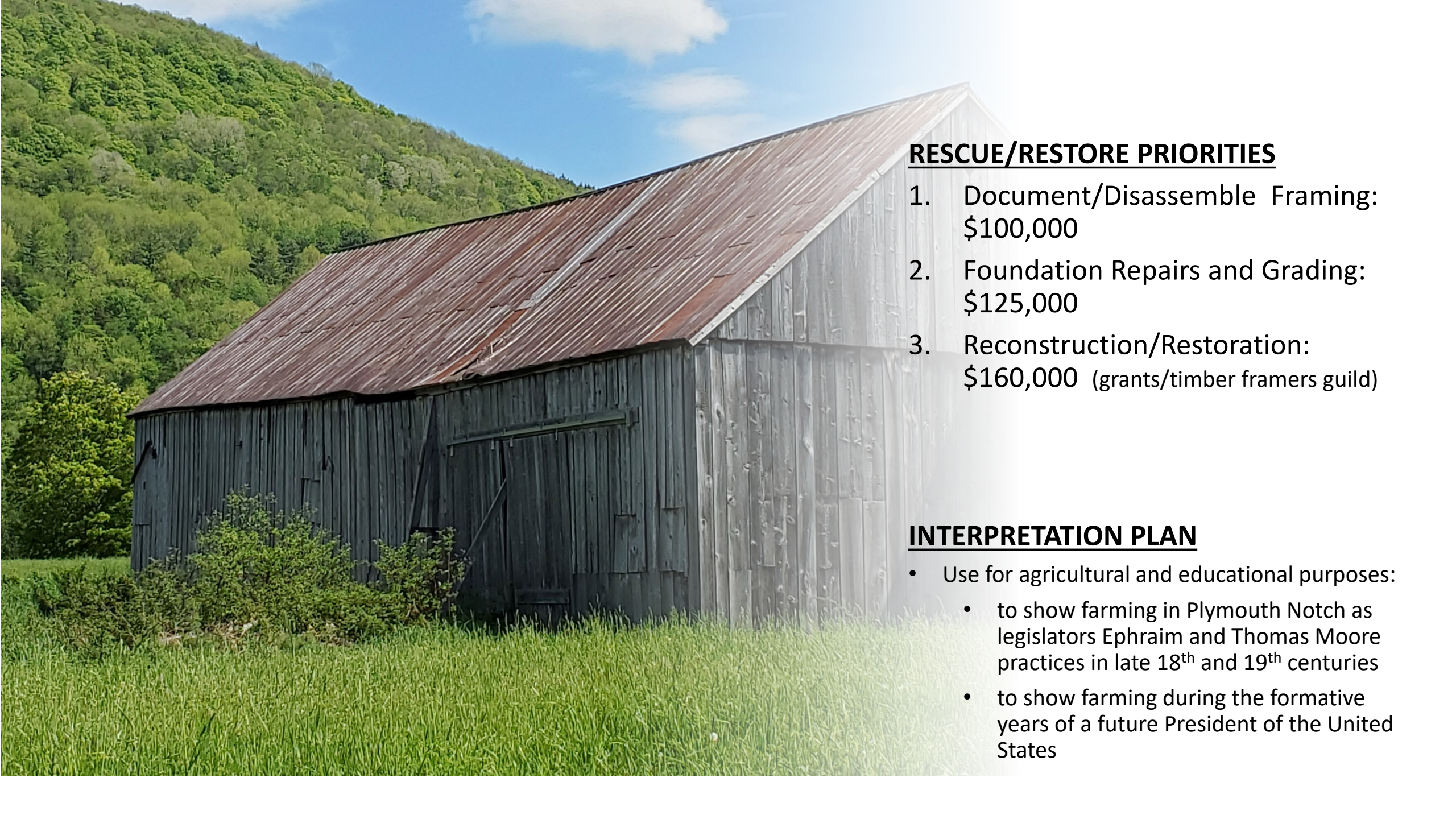


**The area upon the north wall between the west barn's east drive bent and the common wall is currently most threatened. The plate is missing, tie beam ends rotted away, and four rafters with deteriorated bottoms hanging on the nails of the roof boarding. Much of the joinery along the common wall is disengaged due to the severe water, foundation and sill problems causing the entire wall to distort.**









## **RESCUE/RESTORE PRIORITIES**

1. Document/Disassemble Framing:  
\$100,000
2. Foundation Repairs and Grading:  
\$125,000
3. Reconstruction/Restoration:  
\$160,000 (grants/timber framers guild)

## **INTERPRETATION PLAN**

- Use for agricultural and educational purposes:
  - to show farming in Plymouth Notch as legislators Ephraim and Thomas Moore practices in late 18<sup>th</sup> and 19<sup>th</sup> centuries
  - to show farming during the formative years of a future President of the United States