

STATE HOUSE HVAC ASSESSMENT AND RENOVATIONS
115 STATE STREET, MONTPELIER, VERMONT
CONSTRUCTION PHASES
Total Probable Cost: \$15,191,466

Phase 1 – Summer/Fall 2022

Probable Cost: \$2,763,835

Installation of the summer boiler for humidity control, pumps, and controls. Replacement of the air handling unit (AHU) that serves the Senate committee rooms and offices on the east end of the first floor. Senate offices and the cloak room on the second floor of the original 1858 building. Due to potential manufacturing delays and the short construction period, the Heating Ventilation and Air Conditioning (HVAC) equipment for Phase 2 will be preordered to have it on the construction site when the Legislature adjourns in the spring of 2023.

Phase 2 – Summer/Fall 2023

Probable Cost: \$8,280,776

Replacement of the AHUs that serve the remainder of the first floor of the original 1858 building, the balance of the second floor, and the 3rd floor. This phase also includes the replacement of the fin tube radiation under the window wells in the House and Senate Chambers.

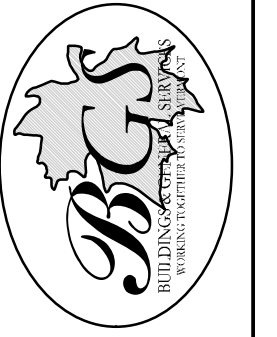
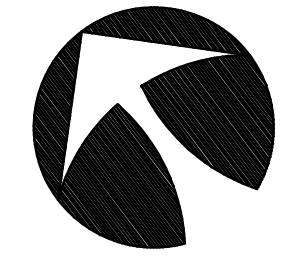
Phase 3 – Summer/Fall 2023 or 2024

Probable Cost: \$4,146,856

Replacement of the AHUs that serves the Legislative Council, Mezzanine, Cafeteria, Speaker and Clerk of the House. The cost of this phase is less than the Alternate because the design and other soft costs that are based upon percentages of the construction budget at schematic design in 2022 are not included. If these items are cut from the project, then those soft costs are also reduced.

Potential Cost Saving Measures

Alternate A: Eliminate increasing the capacity of the radiation in the window seats (House and Senate Chambers)	-\$1,047,368
Alternate B: Postpone upgrading the HVAC in Legislative Council, Cafeteria, and Speaker's Office	-\$4,867,310
Alternate C: Postpone the ductwork, piping, and terminal devices in the Annex (House committee rooms and legislative lounge)	-\$2,200,398
Total potential savings:	-\$6,781,981



STATE OF VERMONT
 Department of Buildings
 and General Services
 Agency of Administration
 Montpelier, Vermont



VERMONT

115 STATE ST. - STATEHOUSE

EXISTING FLOOR PLANS

MONTPELIER

REVISIONS

SCALE:	MAY 2011
DATE:	S.K. Janavicz
DRAWN BY:	
APPR. BY:	

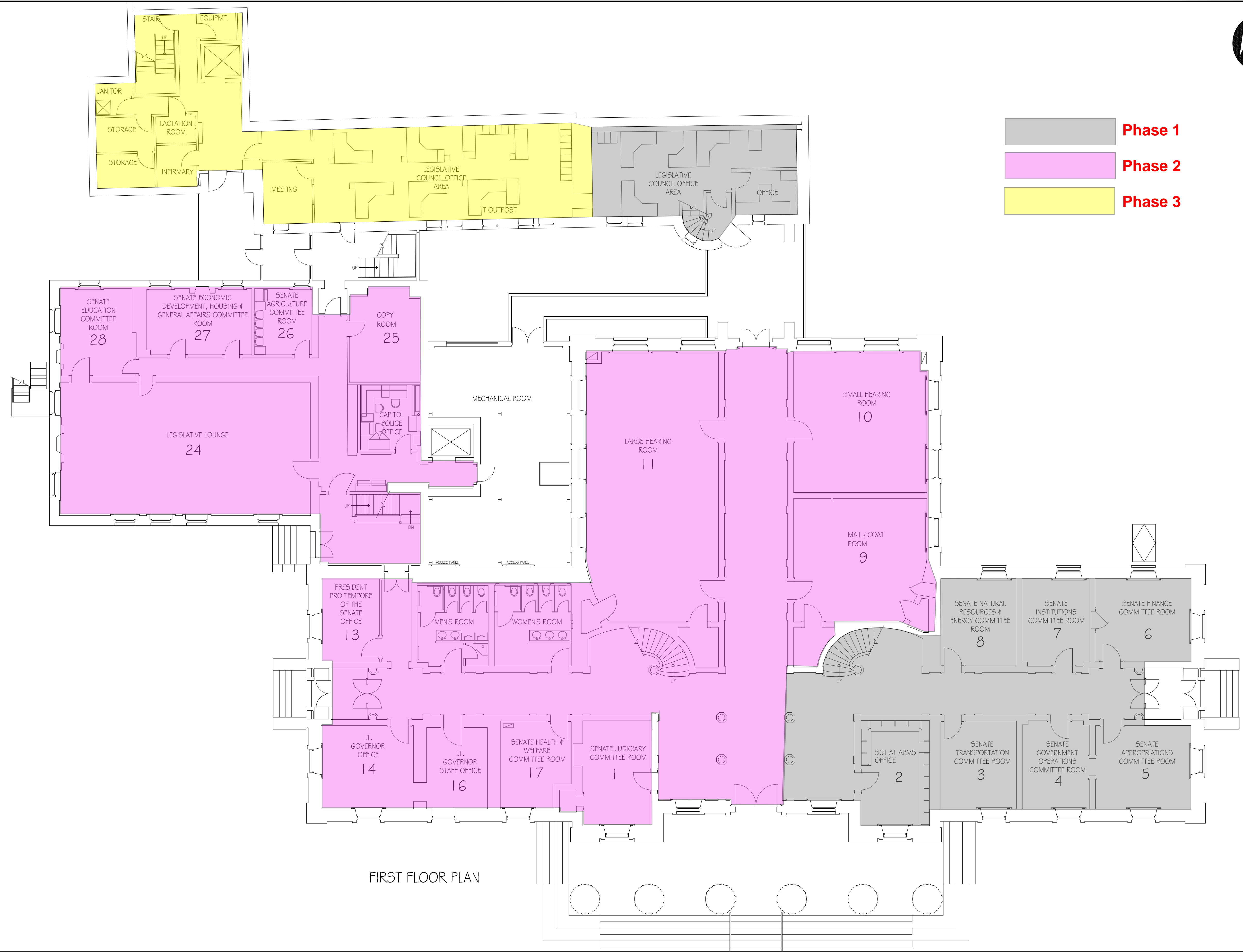
115 STATE STREET
 STATEHOUSE

FLOOR
 PLANS

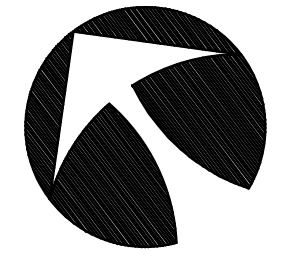
AI

2 OF 9

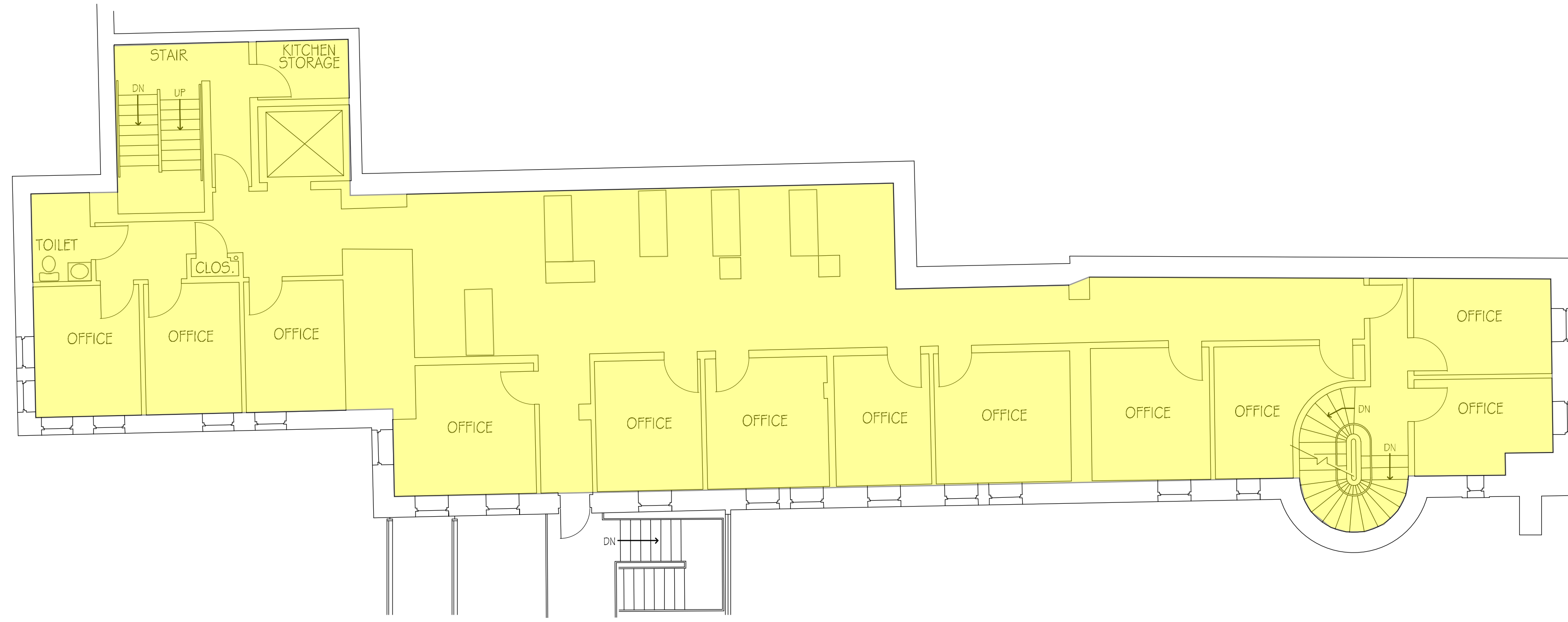
- Phase 1
- Phase 2
- Phase 3



FIRST FLOOR PLAN



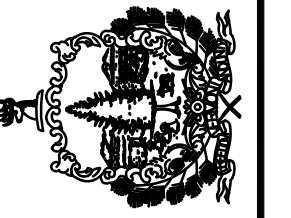
- Phase 1
- Phase 2
- Phase 3



MEZZANINE PLAN



STATE OF VERMONT
Department of Buildings
and General Services
Agency of Administration
Montpelier, Vermont



VERMONT

115 STATE ST. - STATEHOUSE
EXISTING FLOOR PLANS

MONTEPELIER

REVISIONS

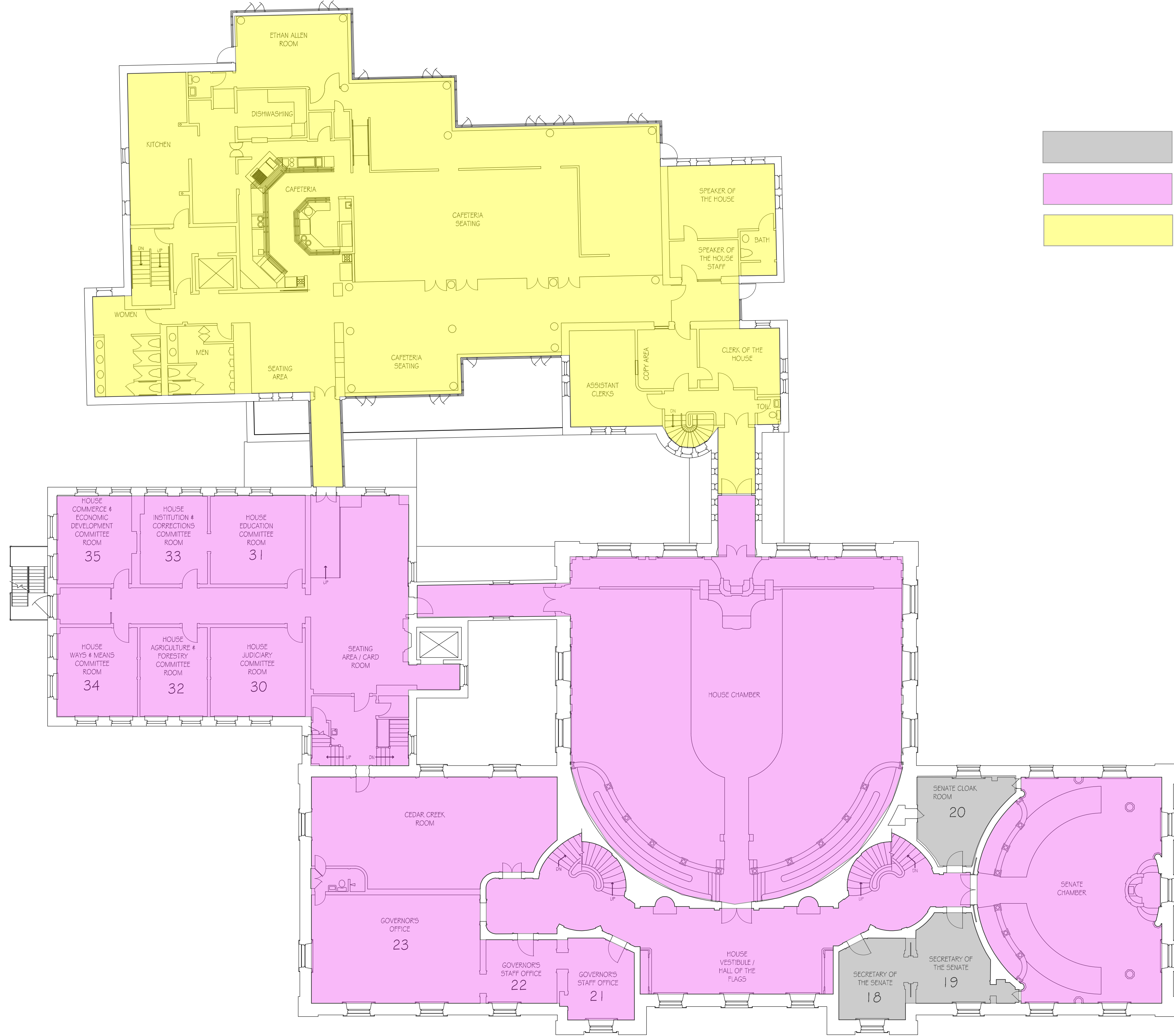
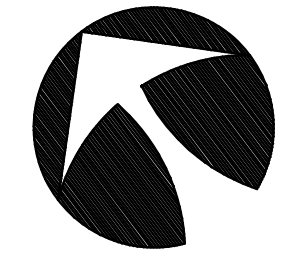
SCALE:	1/16" = 1'-0"
DATE:	MAY 2011
DRAWN BY:	S.K. Janawicz
APPR. BY:	

115 STATE STREET
STATEHOUSE

FLOOR
PLANS

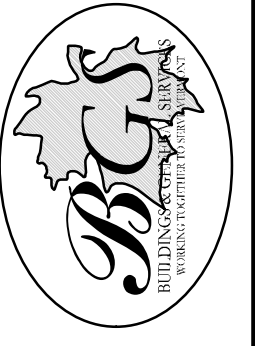
A1-2

3 OF 9



- Phase 1
- Phase 2
- Phase 3

SECOND FLOOR PLAN



STATE OF VERMONT
 Department of Buildings
 and General Services
 Agency of Administration
 Montpelier, Vermont



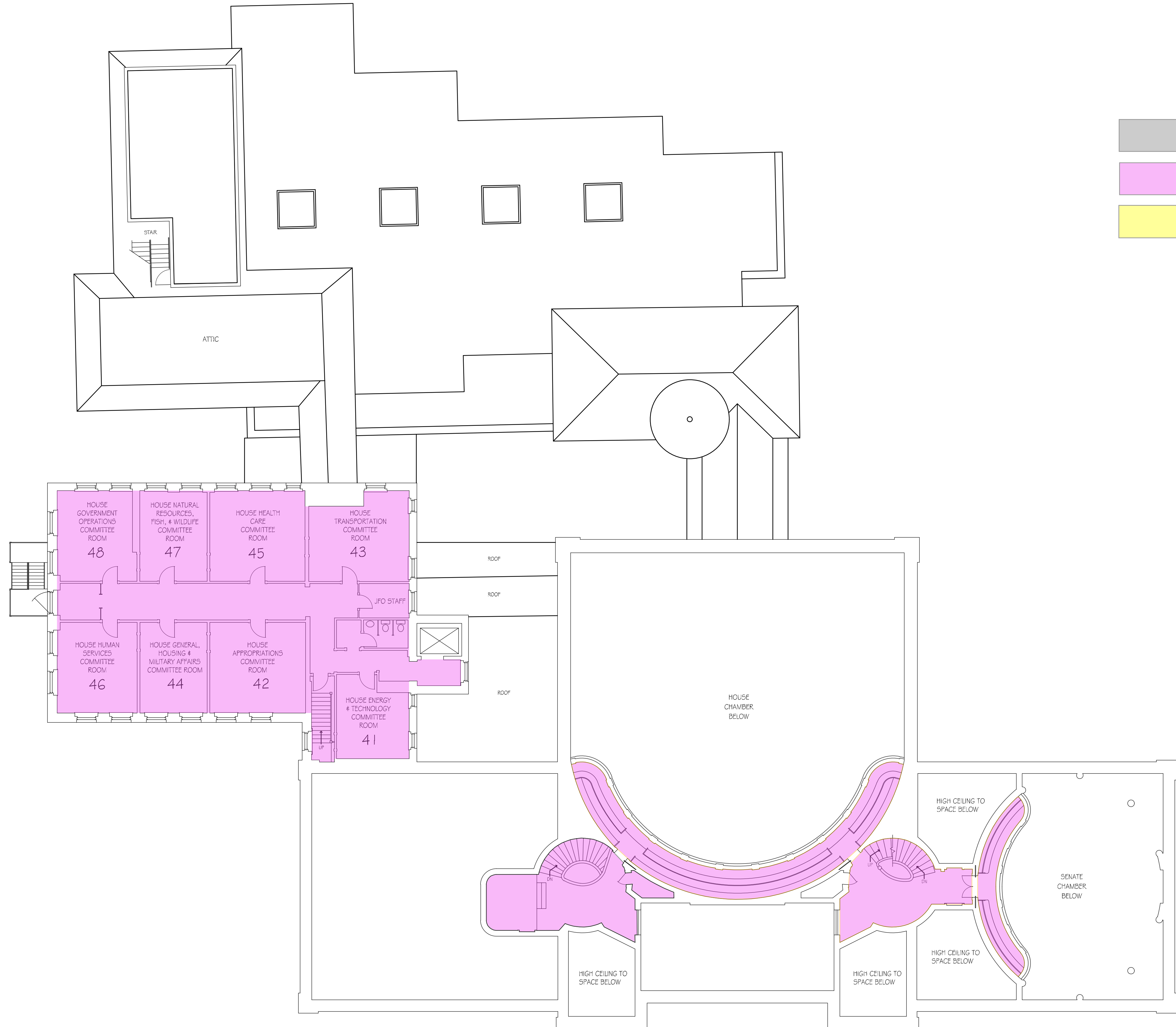
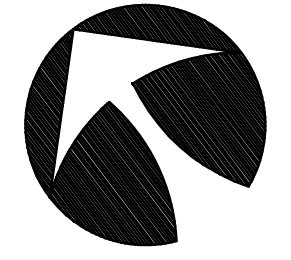
115 STATE ST. - STATEHOUSE
 EXISTING FLOOR PLANS

REVISIONS	
SCALE: 1/16" = 1'-0"	
DATE: MAY 2011	
DRAWN BY: S.K. Janavicz	
APPR. BY:	

115 STATE STREET
 STATEHOUSE

FLOOR
 PLANS

A2



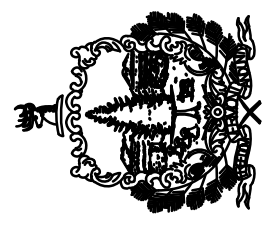
Phase 1

Phase 2

Phase 3



STATE OF VERMONT
 Department of Buildings
 and General Services
 Agency of Administration
 Montpelier, Vermont



VERMONT

115 STATE ST. - STATEHOUSE
 EXISTING FLOOR PLANS

MONTELLER

REVISIONS

SCALE: 1/16" = 1'-0"
DATE: MAY 2011
DRAWN BY: S.K. JARAWICZ
APPR. BY: -

115 STATE STREET
 STATEHOUSE

FLOOR
 PLANS

A3

6 OF 9