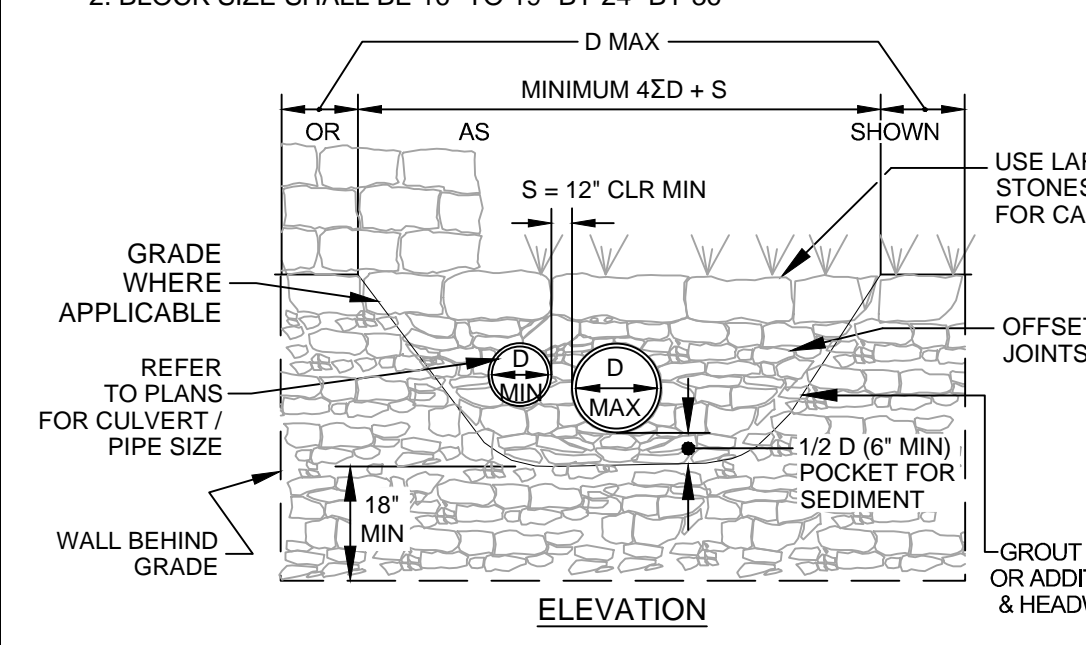
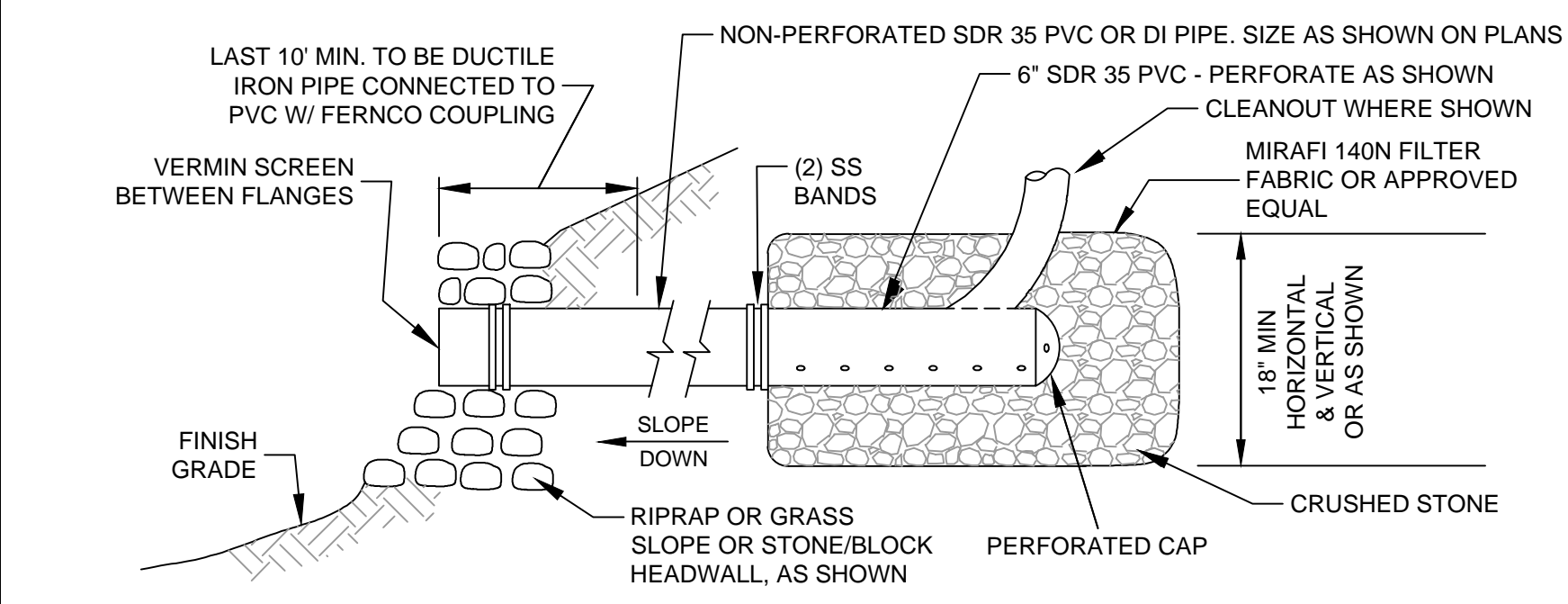


RESETTING EXISTING CATCH BASIN DETAIL
NOT TO SCALE

- NOTES:
1. WHERE BLOCKS ARE TO BE USED, ENGINEER'S PRIOR PERMISSION IS REQUIRED.
2. BLOCK SIZE SHALL BE 16" TO 19" BY 24" BY 36"



STANDARD CULVERT / PIPE STONE OR BLOCK HEADWALL DETAIL
NOT TO SCALE

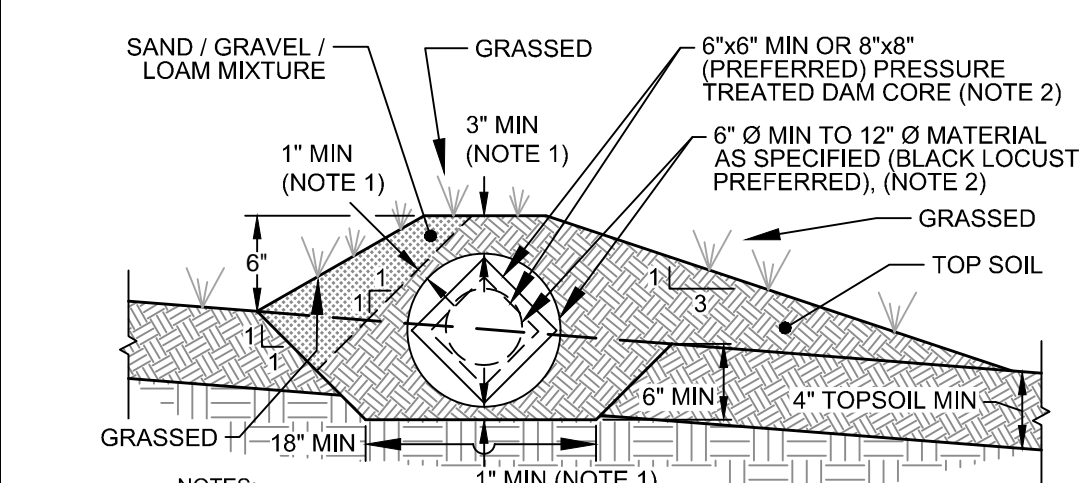


UNDERDRAIN DETAIL
NOT TO SCALE

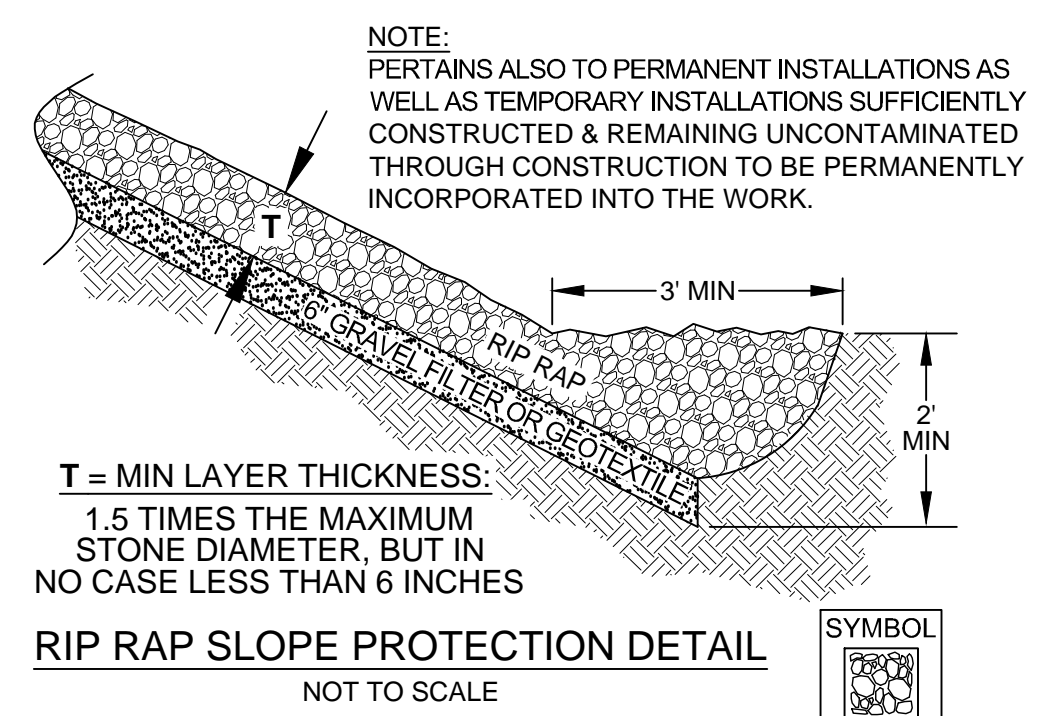
PERFORATIONS SHALL BE IN ACCORDANCE WITH THE NEW ENGLAND PERFORATION PATTERN:

DIAMETER (INCHES)	NUMBER OF ROWS	HOLE SPACING ON CENTER (± INCHES)	HOLE DIAMETER (± INCHES)
4	2	5	1/2
6	2	5	1/2
8	4	3	3/4
10	4	3	3/4
12	6	3	3/4

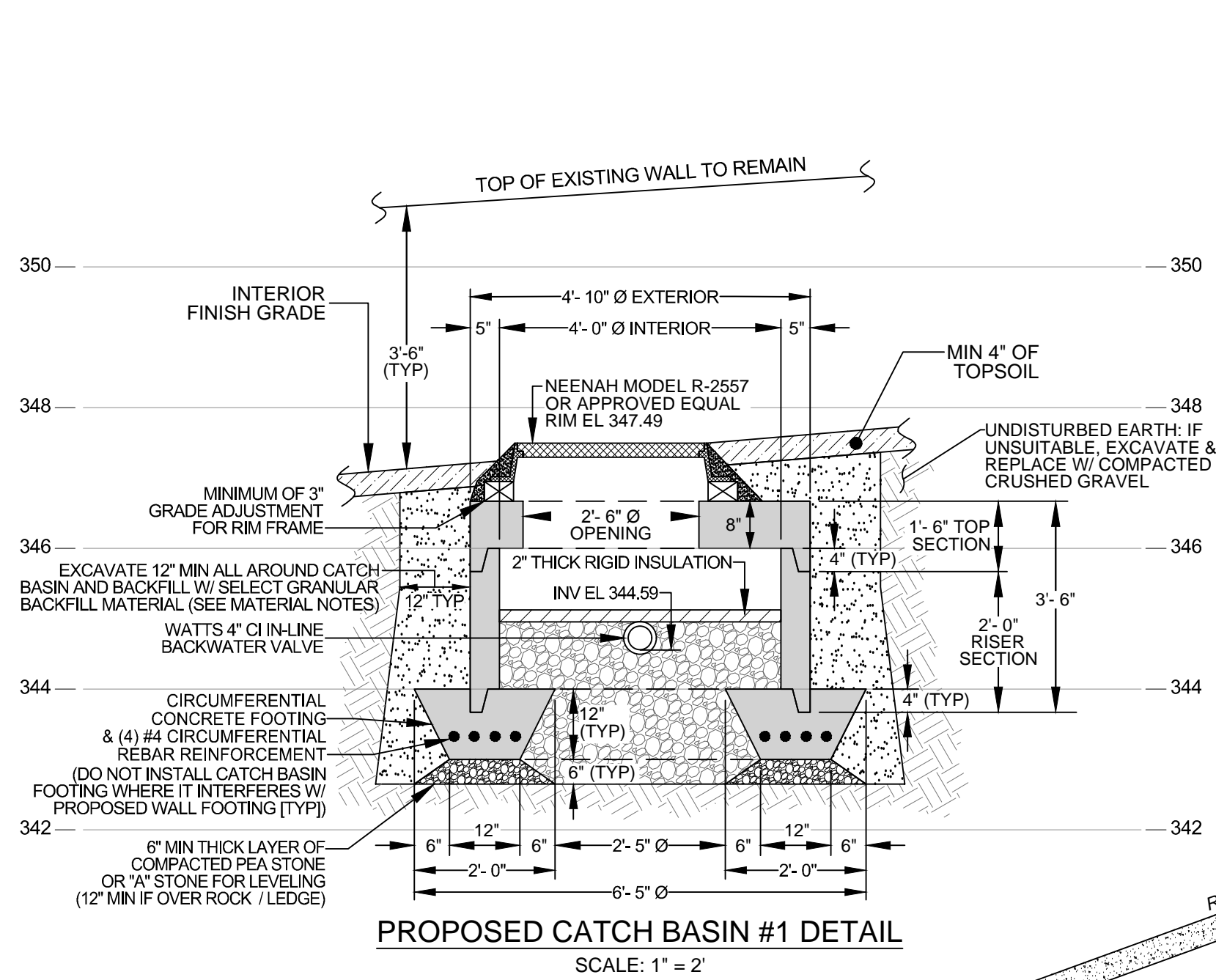
ALTERNATIVE PERFORATION SIZES / PATTERNS WILL BE CONSIDERED BY THE ENGINEER



GRASSED PATH CHECK DAM WITH WOODEN CORE DETAIL
NOT TO SCALE



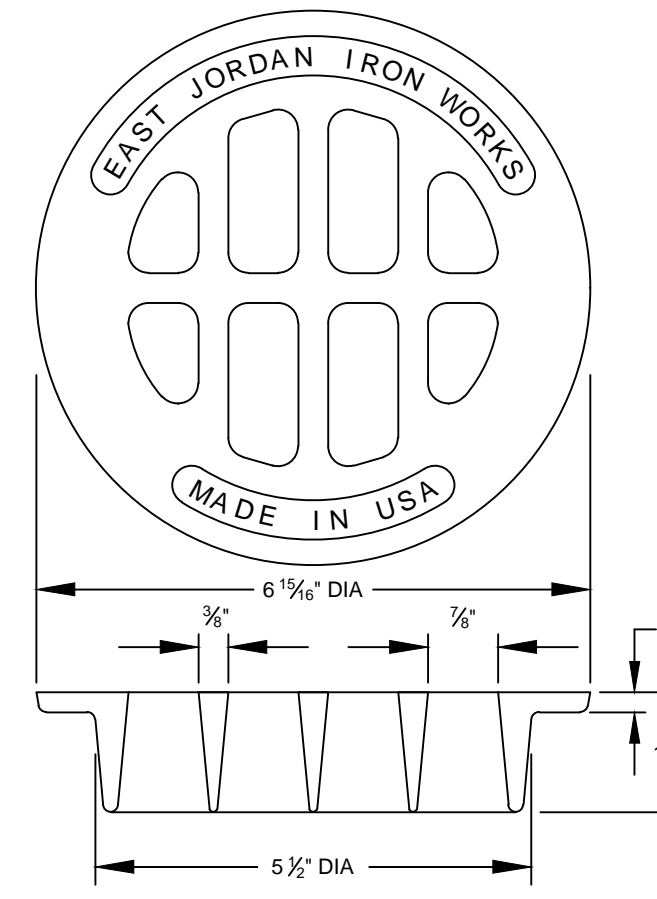
RIP RAP SLOPE PROTECTION DETAIL
NOT TO SCALE



PROPOSED CATCH BASIN #1 DETAIL
SCALE: 1" = 2'

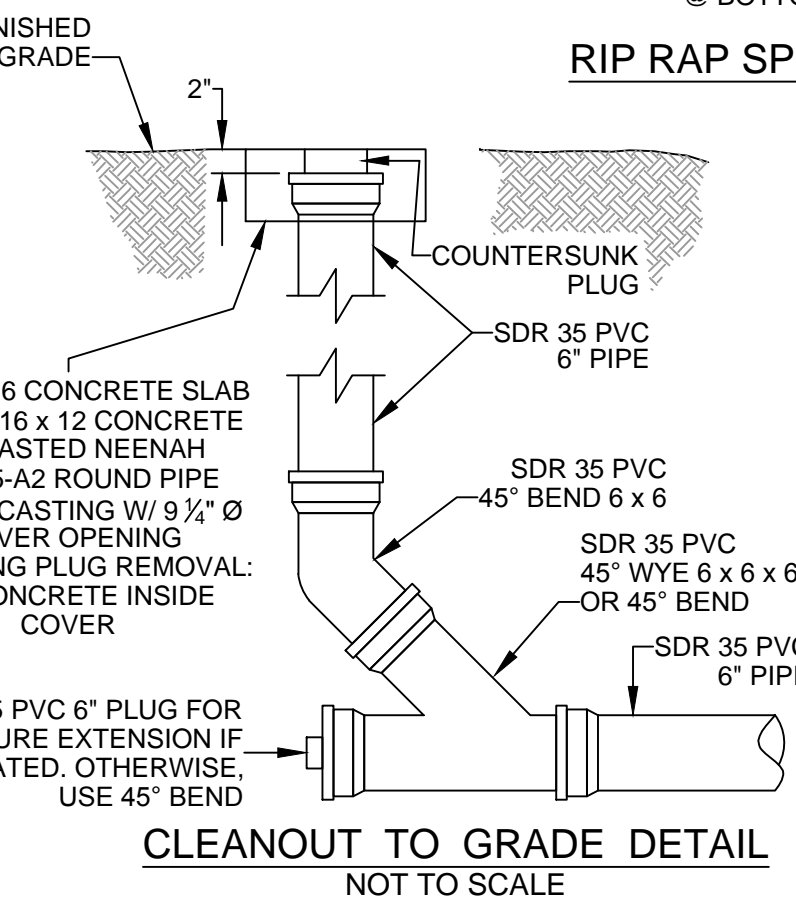


PROPOSED CATCH BASIN #2 DETAIL
SCALE: 1" = 2'

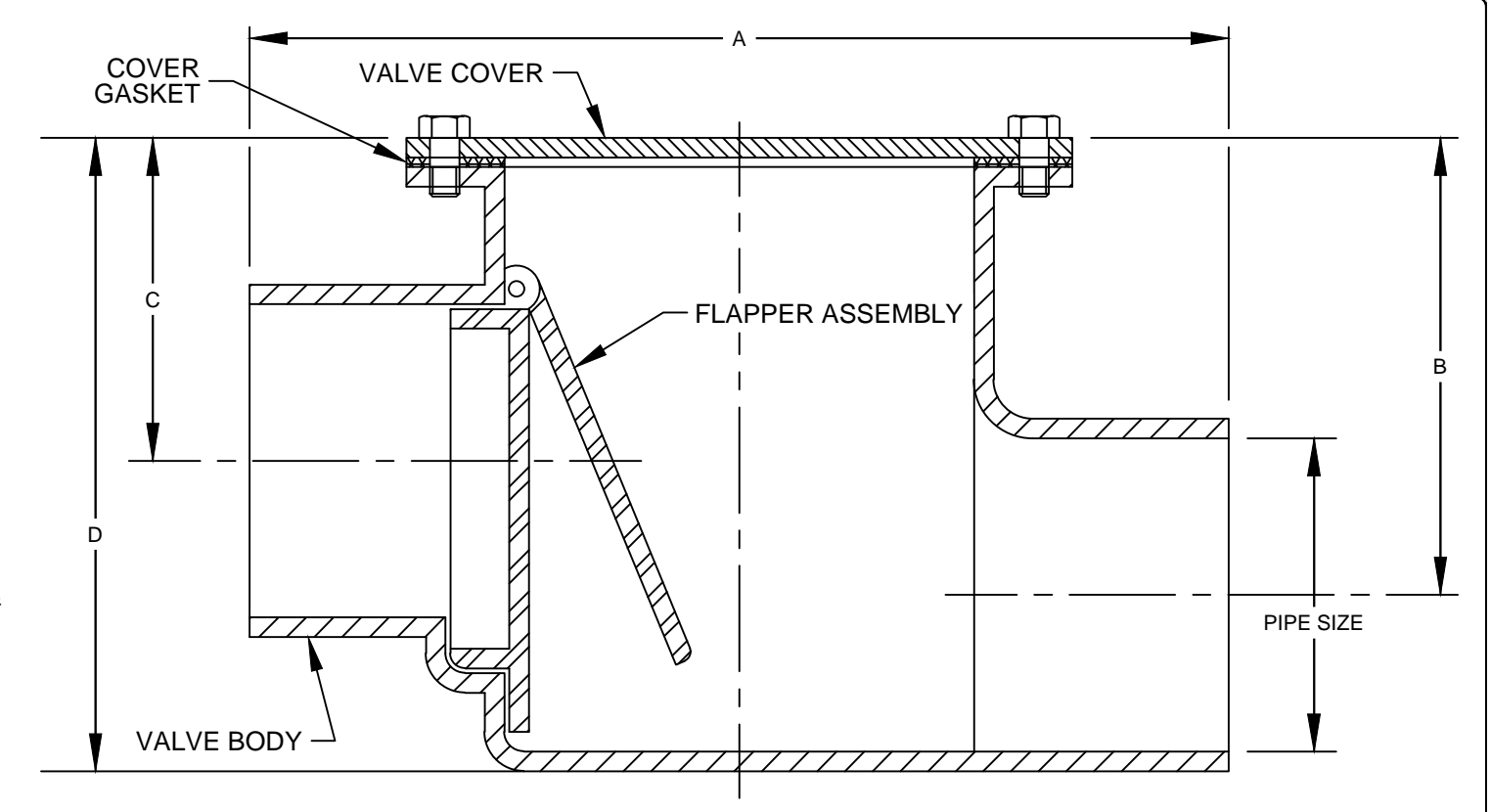


EXAMPLE FLAT GRATE DETAIL - LIGHT DUTY FOR 6\"/>

NOTE: OTHER SIMILAR PIPE GRATES CAN BE USED DEPENDING ON NEED AND PIPE SIZE INCLUDING NEENAH R-4373 HEAVY DUTY SOIL PIPE GRATE, AND NEENAH R-4380 LIGHT DUTY FLAT BAR DRAINAGE GRATE.



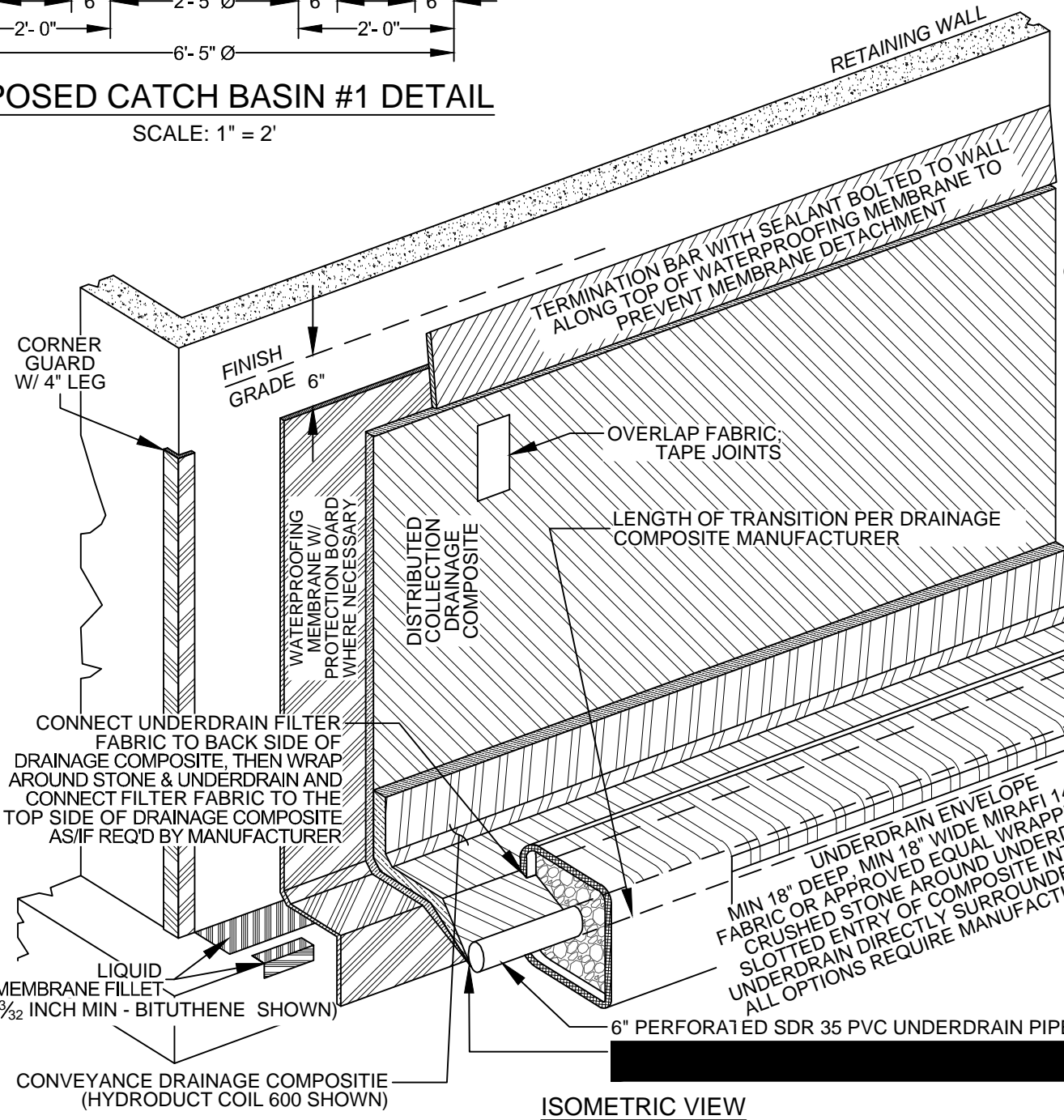
CLEANOUT TO GRADE DETAIL
NOT TO SCALE



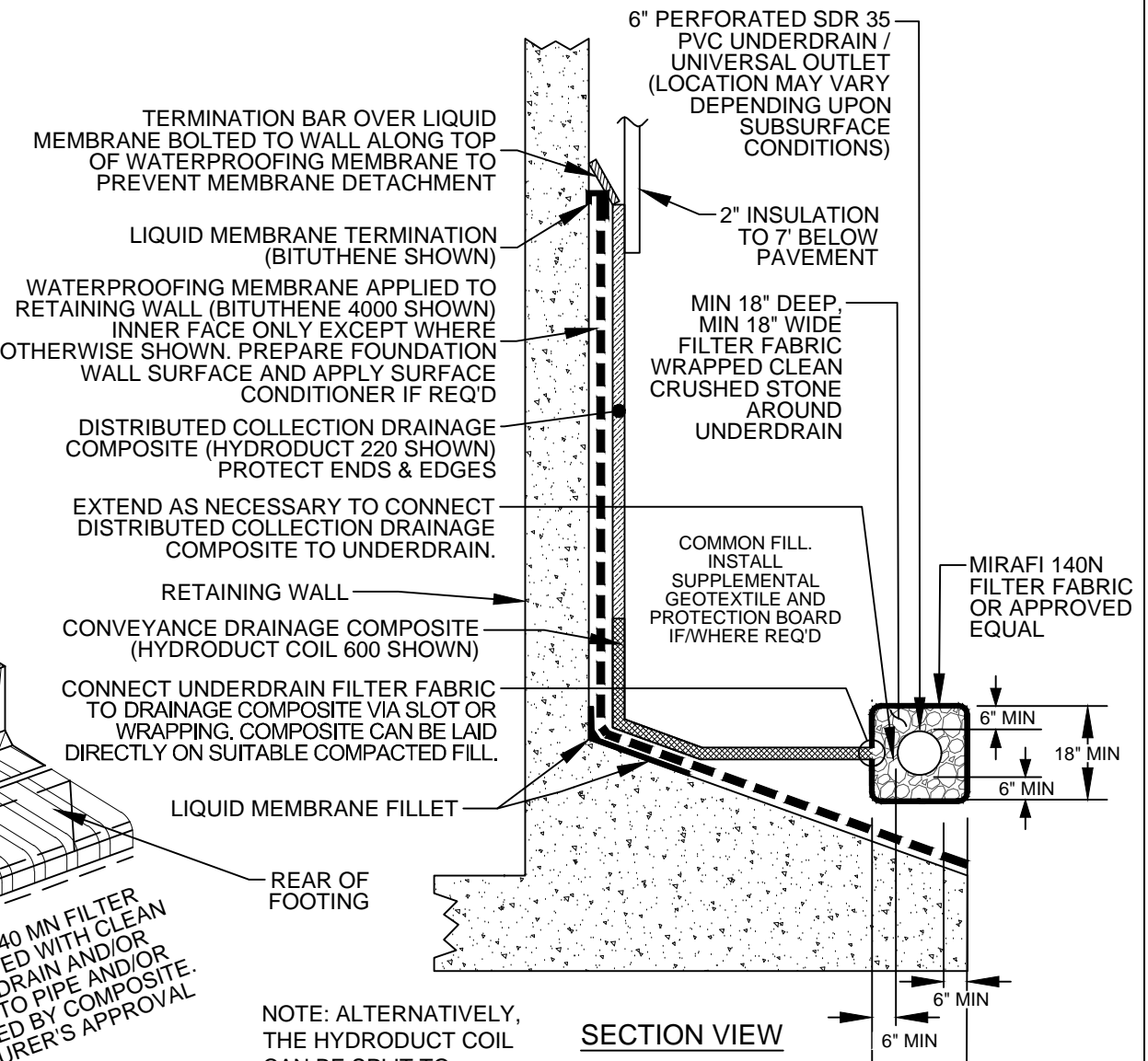
PIPE SIZE	A	B	C	D
3"	11-1/2"	4-3/8"	3-3/4"	6-1/2"
4"	12"	4-3/8"	3-3/4"	7-1/2"
6"	14-1/2"	5-1/2"	5"	9-3/4"

CAST IRON BACKWATER VALVE DETAIL
NOT TO SCALE

SPECIFICATION: WATTS DRAINAGE BV-200 CAST IRON BACKWATER VALVE WITH GASKETED COVER, BRONZE SEAT AND FLAPPER, AND NO HUB CONNECTIONS.

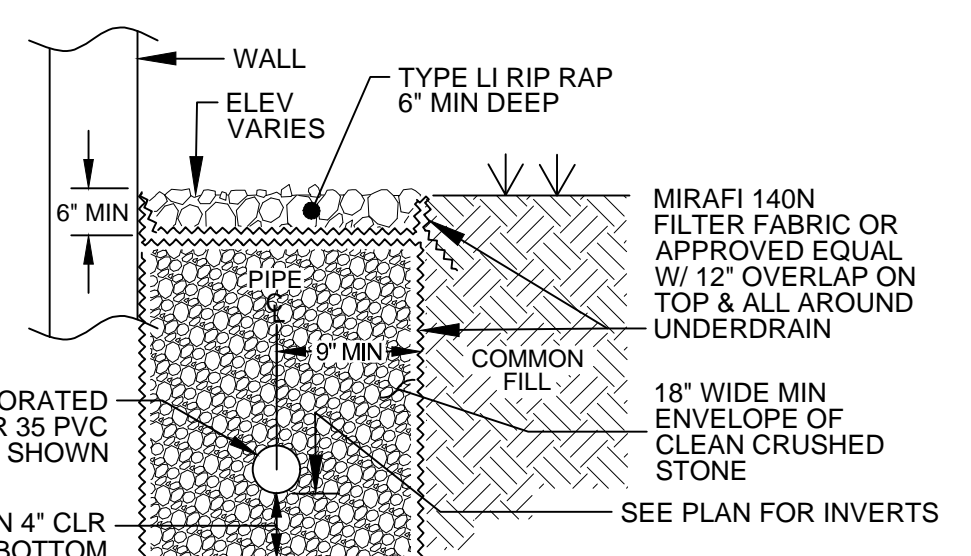


GENERIC WATERPROOFING & UNDERDRAIN PLACEMENT DETAIL
NOT TO SCALE

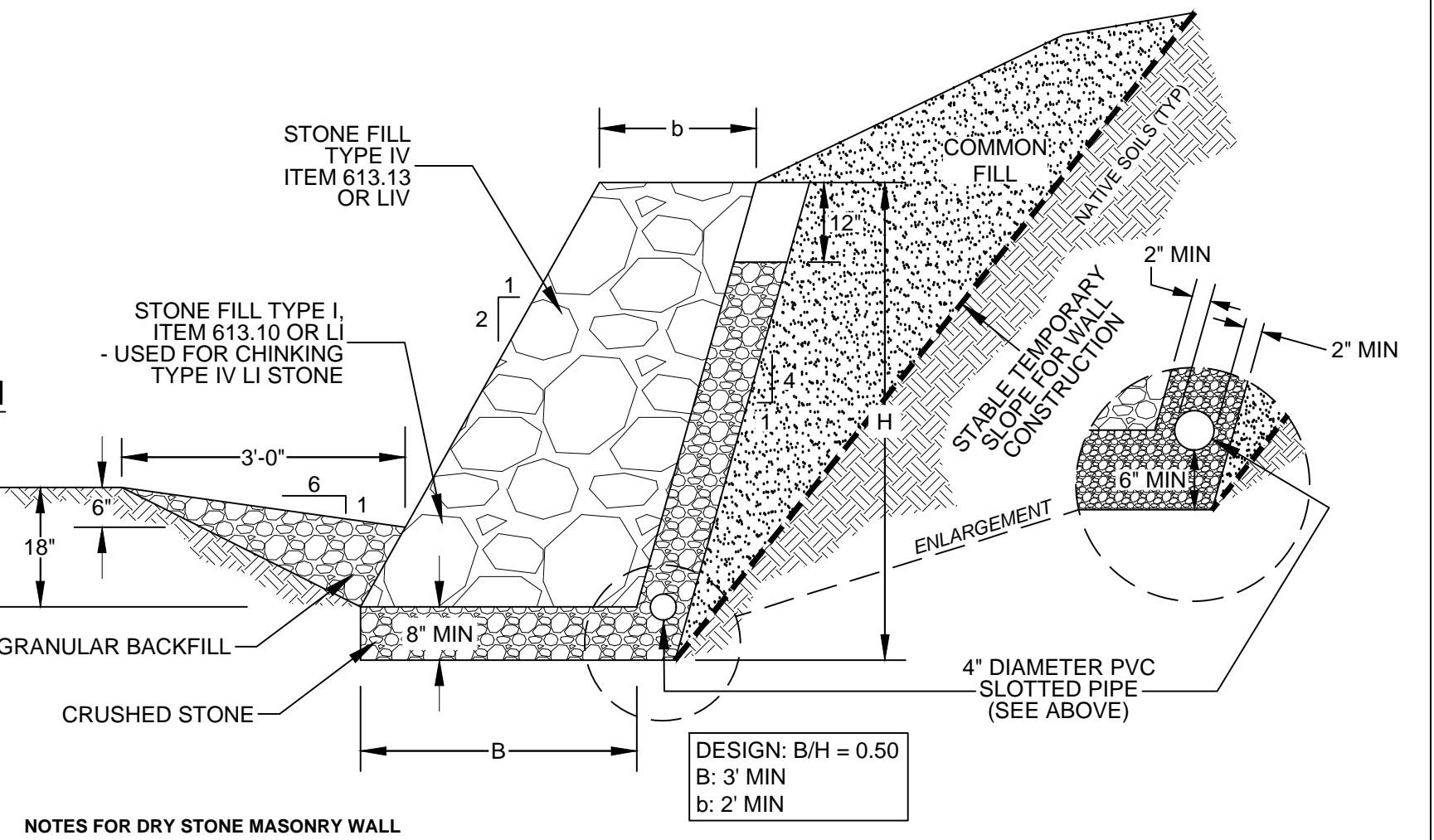


SECTION VIEW

NOTE: ALTERNATIVELY, THE HYDRODUCT COIL CAN BE SPLIT TO ENCAPSULATE THE PIPE SECTION PER THE HYDRODUCT MANUFACTURER.



RIP RAP SPLASH STRIP OR PAD SHOWN W/ UNDERDRAIN PARALLEL TO WALL
NOT TO SCALE



DRY STONE MASONRY WALL DETAIL
NOT TO SCALE

- NOTES FOR DRY STONE MASONRY WALL
- Stone for Stone fill - Type IV (VTrans Item No. 613.13) or LIV - The longest dimension of the stones shall vary from 3 to 60 inches and at least 50 percent of the volume of stone in place shall have a least dimension of 20 inches.
 - Stone for Stone fill - Type I (VTrans Item No. 613.10) or LI - The longest dimension of the stones shall vary from 1 to 17 inches and at least 50 percent of the volume of stone in place shall have a least dimension of 4 inches.
 - Crushed Stone - See Specifications